



THE AMERICAN RESCUE PLAN

Whatcom County Priorities and Policy Framework



Preliminary Discussion

Satpal S Sidhu, County Executive
Aug 10, 2021

Big picture

ARPA funds are intended to address the **health, social** and **economic** impacts of the pandemic.

These funds alone are **not enough** to meet all the need.

Council faces the **difficult task** of determining priorities and levels of investment.

Working cooperatively, we can build and implement a plan that maximizes the impact and value of our investments.



Core principles

Invest primarily in activities with long-term benefits or start-ups

Target investment toward highest community needs

Provide accountability / Identify measurable outcomes

Retain flexibility to adjust as conditions change

Collaborate with COB, Small Cities, Port and PUD

Provide transparency in the decision-making

Seek other grant funds from new Federal & State programs



Intent of Creating Buckets

Identify Council priorities and pathways for Administration to seek qualified projects

Council decides actual ARPA Fund allocations for qualified Projects

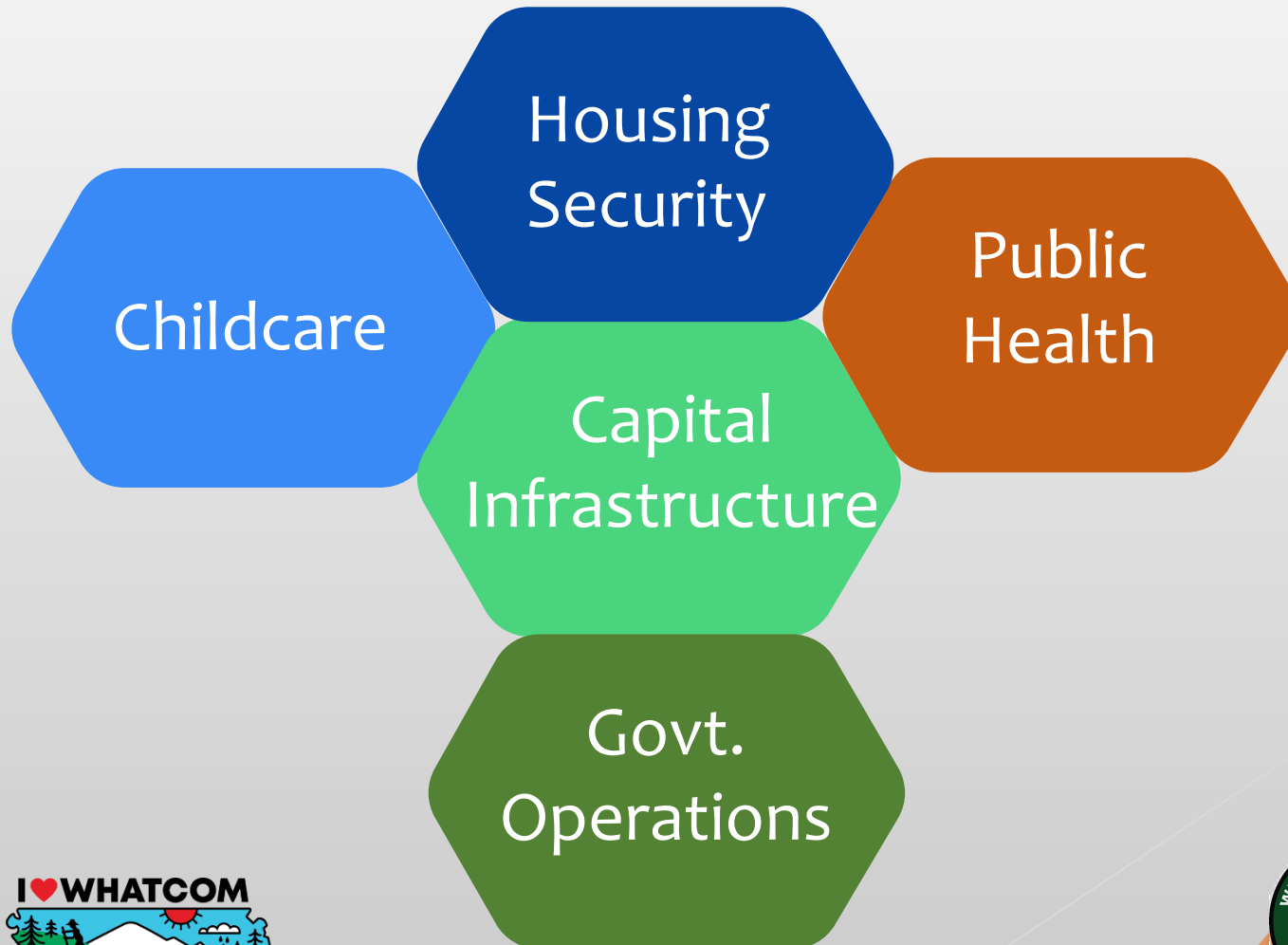
Each “Bucket” allocation shall be tracked by Finance

Council to retain flexibility to reallocate or create new “buckets” as we progress on use of ARPA Funds



DRAFT Framework – Buckets

Community needs for ARPA fund Investments



Additional Need – Buckets

Additional categories may need some ARPA Funds

Business
Support

Tourism

Food
Security

Rental
Assistance

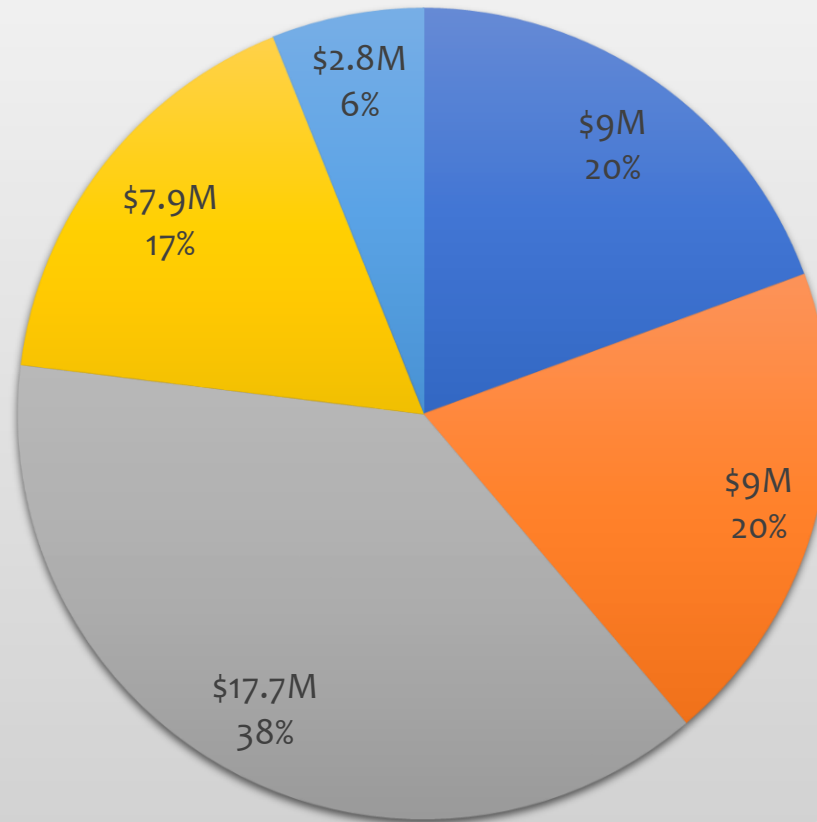
Homeless
Services

Continually monitor for changes in needs

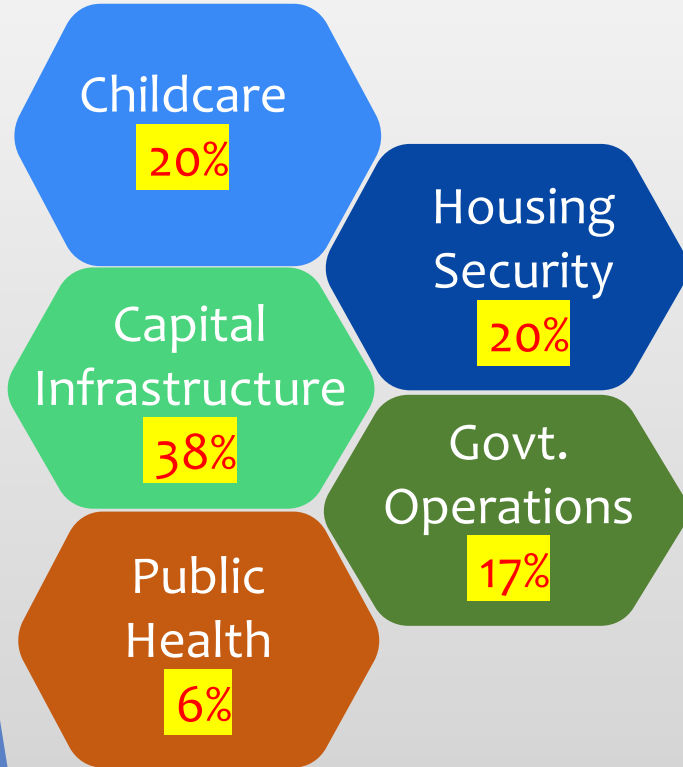


Bucket Allocations

- Housing Security
- Childcare
- Capital Infrastructure Projects
- Government Operations
- Public Health



Bucket Allocations - cont'd



Mid-Biennium Budget Adjustment at the end of 2021 and Next Biennium Budget prep starting Mid 2022

Budget Lapse Assumed at 4%

Revenue Loss Provision of ARPA not included at this time



Priorities – Housing Security

Affordable Housing Projects – \$9M (proposed)

ARPA Funds expected to be leveraged with other sources

Affordable Housing Capital projects examples

Bellingham Housing Authority's Samish Commons*
Opportunity Council's Laurel / Forest project

Homeless Housing Shelters Capital projects examples

New Family / Child Shelter
Lighthouse Mission Project Family / Child shelter
Respite / Hygiene Shelter (Way Station)

*Already allocated \$525K



Priorities – Housing Security

Subcategories to monitor for possible need of ARPA funds, to augment other Federal / State sources

Rental assistance

Homeless outreach

Motel stays

Case management

Recurring programmatic expenses are best funded from other sources



Priorities – Childcare

Capital Projects – \$7M (proposed)

ARPA Funds expected to be leveraged with other sources

Large facility shells examples

Samish Commons

Millworks

YMCA Barkley facility

Opportunity Council Laurel / Forest project

Workforce Development – \$2M (proposed)

Whatcom Community College

Bellingham Technical College

Northwest Workforce Council



Priorities – Childcare

Additional potential subcategories

Retention incentives

Small facility acquisitions

Support hub and spoke model

Support OC's childcare expansion and retention program

Revolving loan fund

Input expected from Child & Family Task Force.



Priorities – Infrastructure

Several Initiatives – \$17.7M (proposed)

ARPA Funds expected to be leveraged with other sources

Countywide Infrastructure Projects – \$8.7M

Small Cities / Port / PUD / Water and Sewer Districts

Examples: Blaine Sewer, North Ferndale Utility Expansion,
Columbia Valley infrastructure

Cherry Point Business Park Initiative

Water Quality, Fish Habitat & Climate Resilience projects – \$3M

South Fork Valley Projects (Black Slough and Fish Camp)

Lynden Managed Aquifer Recharge project

Broadband – \$6M

Point Roberts / Deming-Glacier / Hwy 9

Leverage State and Federal Funds for Rural Broadband Initiative

Funding to follow once ‘last mile’ solution is determined



Priorities – Public Health

Covid-19 Impact Mitigation – \$2M (proposed)

Possible new Fund Allocation for Health Dept

Public health response – \$700K (reserve if other funds aren't available)

Behavioral Health – \$800K, including

Alternative Response Team (GRACE) one time startup costs

Jail COVID Testing – \$435K*

IQF Facility – \$892K*

Additional potential subcategories

Workforce development (behavioral & mental health specialists)

Case management

*already allocated



Priorities – Government Operations

Several Initiatives – \$7.9M (proposed)

Criminal Justice Backlog – \$6.3M

ARPA Administration – \$800K

Grant Manager and Compliance positions

Frozen positions– \$840K (2021 only)



Cooperation with Cities

Close Cooperation with COB plans for their ARPA Investments

Collaboration with COB to enhance the impact of County investments in the areas of Childcare and Affordable Housing

Collaboration with Small Cities to leverage County ARPA investments

Seek equitable investments in all parts of Whatcom County



Accountability & Outcomes

Develop matrices for measurable outcomes, where possible

Broadband	– Homes connected
Childcare	– Slots enhanced / created
Affordable Housing	– Units Enabled
Criminal Justice	– Court cases backlog reduced

Track leveraging of City / State / Federal funds



Other Possible Resources

- Education and Childcare
 - Child Care and Development Block Grants
 - Child Care Stabilization Fund
 - Education Stabilization Fund (School Districts)
- Health
 - Vaccination, Testing, Contact Tracing
 - Substance Abuse Prevention and Treatment (SAPT)
 - Community Mental Health Block Grants
 - Certified Community Behavioral Health Clinics
- Housing
 - Low Income Home Energy Assistance Program
 - Emergency Rental Assistance Program
- Business Support
 - Eco Dev Admin Grants for Tourism & Outdoor Rec
 - PPP / EIDL
 - Working Washington Grants
 - Restaurant Relief





Questions?
Comments?

