

# COVID-19 Vaccine Update

Whatcom County Health Board

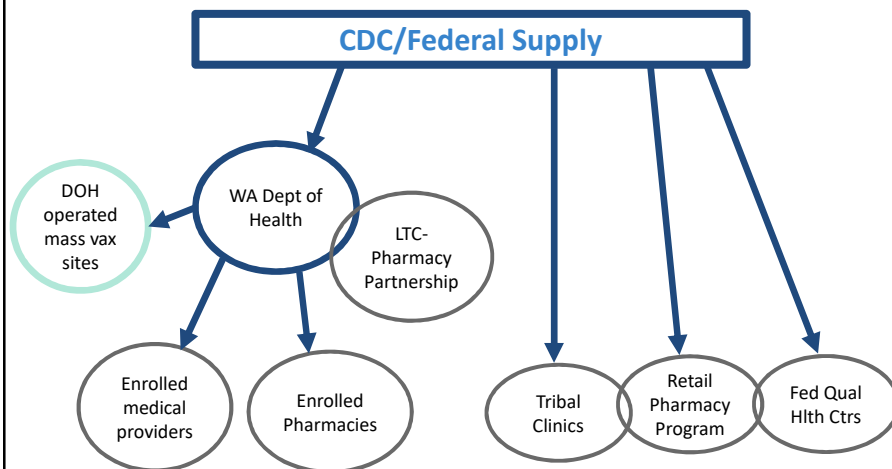
3/30/21



Whatcom County  
**HEALTH**  
Department



## COVID Vaccine Supply



Whatcom County Vaccine Providers

## Demand remains higher than supply

### COVID-19 Vaccine Allocation Update ORDERING/RECEIVING

WEEK  
STARTING  
MARCH 29

Washington state  
providers requested

**489,690**

- 321,260 first doses
- 168,430 second doses

Washington will receive from  
the federal government

**343,700**

- 173,020 first doses
- 170,680 second doses

Vaccinate  
WA  
CovidVaccineWA.org

This forecast did not include the Johnson & Johnson vaccine

## Whatcom County Vaccination Progress

Whatcom County Residents Who  
Have Received First  
Pfizer/Moderna Dose or J&J Dose

**61,244**

**27.2%**

As of 3/25

Whatcom County  
Residents Who Are  
Fully Vaccinated

(Received both Pfizer/Moderna doses or J&J dose)

**34,198**

**15.2%**

For the Week of March 15, 2021

CDC Allocation to WaDOH	5,710
Federal Retail Pharmacy Partnership	2,000
Federally Qualified Health Centers	0
Long-Term Care Pharmacy Partnership (data not available)	
Indian Health Service (data not available)	

First Doses/J&J Doses  
Allocated to Whatcom  
County Providers

For the  
Week of  
Mar 15

Total  
**7,710**

For the Week of March 22, 2021

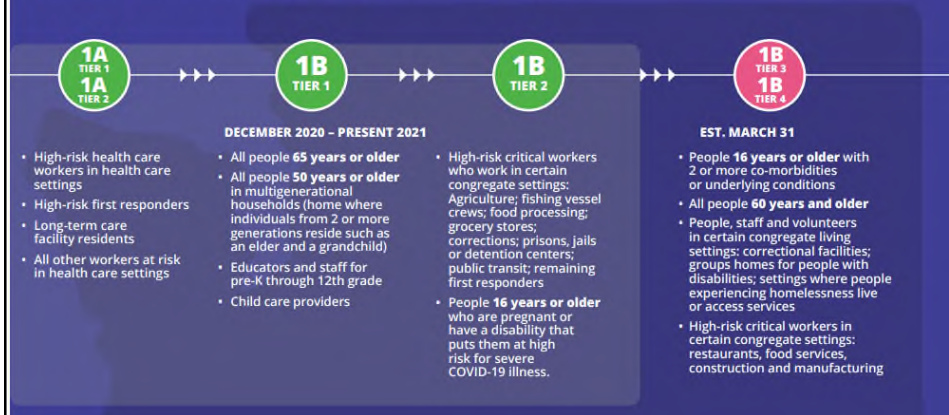
CDC Allocation to WaDOH	3,470
Federal Retail Pharmacy Partnership	not yet available
Federally Qualified Health Centers	0
Long-Term Care Pharmacy Partnership (data not available)	
Indian Health Service (data not available)	

For the  
Week of  
Mar 22

Total  
(not final)  
**3,470**

## WASHINGTON'S COVID-19 VACCINE PHASES

Find out if it's your turn at [FindYourPhaseWA.org](https://www.findyourphases.org)



- PhaseFinder – no longer in use after 3/31
- Vaccine Locations to make an appointment:  
[www.covidvaccinewa.org](https://www.covidvaccinewa.org)

## WCHD Vaccine Planning & Operations

- Community Vaccination Center
- WCHD Mobile Vaccine Clinic
- National Guard
- Ongoing coordination with vaccine providers & community partners
- Outreach, education and connecting groups, employers and individuals to vaccines





## Questions

Whatcom County  
**HEALTH**  
Department