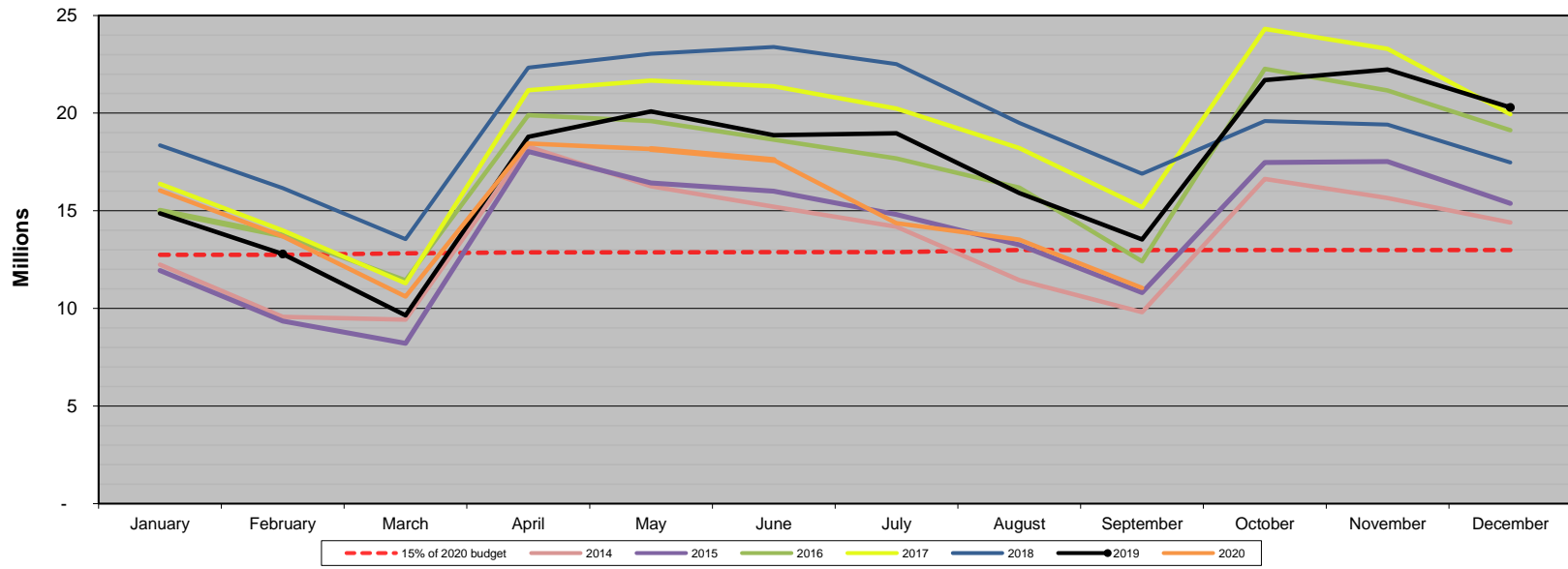


General Fund Cash Balance



15% of 2020 budget	January	February	March	April	May	June	July	August	September	October	November	December
	12,744,959	12,744,959	12,822,095	12,864,612	12,864,612	12,881,058	12,881,058	12,988,534	12,988,534	12,988,534	12,988,534	12,988,534
2014	12,248,287	9,562,194	9,426,250	18,284,893	16,254,029	15,209,467	14,186,631	11,450,464	9,802,742	16,631,357	15,651,625	14,401,771
2015	11,939,473	9,355,043	8,211,799	18,034,867	16,419,730	15,997,603	14,810,853	13,251,093	10,812,411	17,475,433	17,516,229	15,376,210
2016	15,001,294	13,733,271	11,436,934	19,896,490	19,592,476	18,642,100	17,673,068	16,188,412	12,417,191	22,269,826	21,159,054	19,126,202
2017	16,375,425	13,987,201	11,289,037	21,173,954	21,667,788	21,384,831	20,228,334	18,208,983	15,177,907	24,315,102	23,291,312	19,947,177
2018	18,355,180	16,161,752	13,546,266	22,330,835	23,046,049	23,391,069	22,513,924	19,495,004	16,895,200	19,591,697	19,410,620	17,474,206
2019	14,868,125	12,787,777	9,644,105	18,786,171	20,085,171	18,874,997	18,965,715	15,907,728	13,534,495	21,691,395	22,234,907	20,293,131
2020	16,045,223	13,684,006	10,608,542	18,447,513	18,164,861	17,599,521	14,364,075	13,518,402	11,050,360			