

FILE UNDER AB 2019 . 525
DATE RECEIVED: 10/22/2019
SUBMITTED BY: Erika Douglas
Public Works
☐ COUNCIL MEETING
☒ Natural Resources COMMITTEE

10/22/2019

Reducing Bacteria in Whatcom County Waters: A Team Effort

Whatcom County Council: Natural Resources Committee
October 22, 2019

Portage Bay ~circa 1997



Where We Were 2015

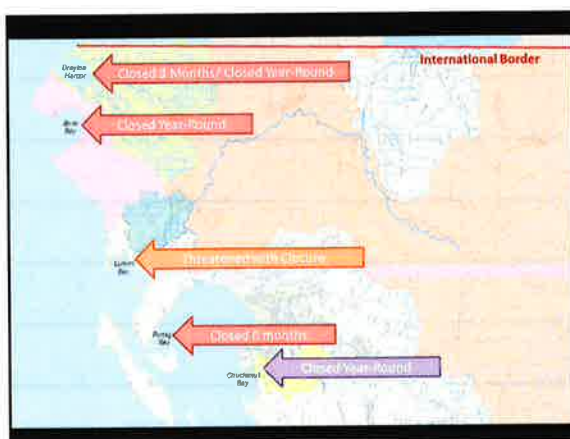
Freshwater Stations



Where We Were 2018

Freshwater Stations









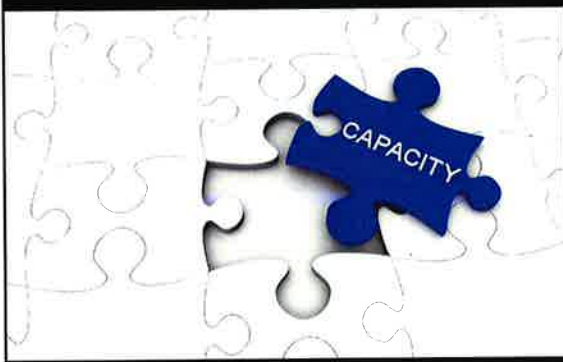


how have we gotten here?

teamwork (noun)

the combined action of a group of people, especially when effective and efficient

federal, state, & local funding



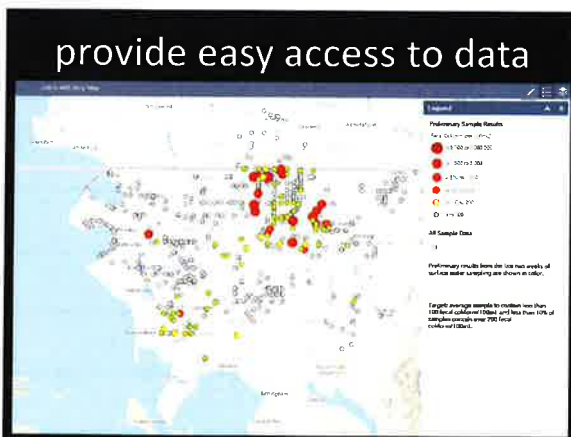
recognize diverse sources



barriers to taking action



provide easy access to data



share common messages



Use Manure Spreading Advisory




Keep Animals off Saturated Pastures



Pick up and Properly Dispose of Pet Waste

provide technical support

EVALUATE
YOUR SEPTIC SYSTEM BEFORE IT'S TOO LATE



Evaluations being completed throughout PIC areas

Whitcomb
CONSERVATION DISTRICT

Healthy Animals. Healthy Pastures. Healthy Resources.

Nearly 200 farm plans completed



provide incentives

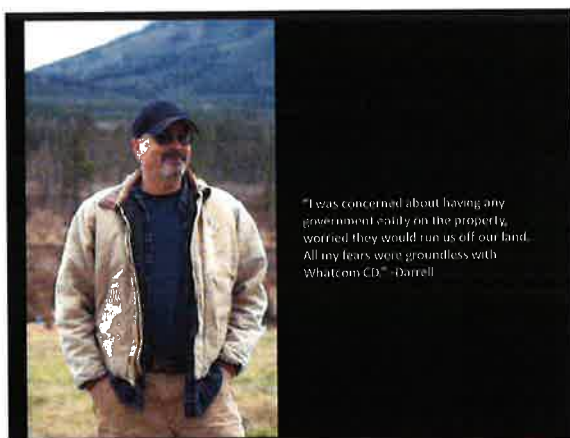
- 505 Septic Maintenance Rebates
- 21 Small Farm Improvement Rebates
- 18 Small Farm Cost-Share Projects

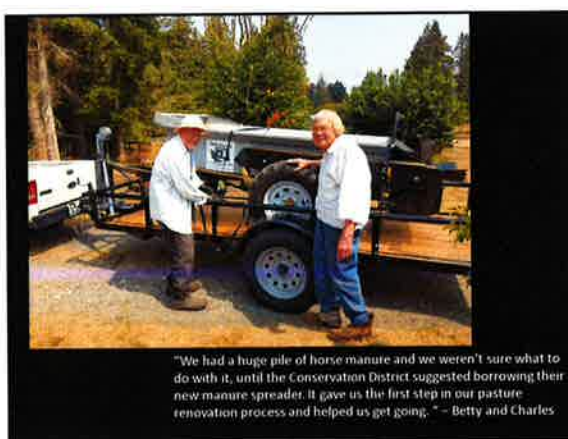


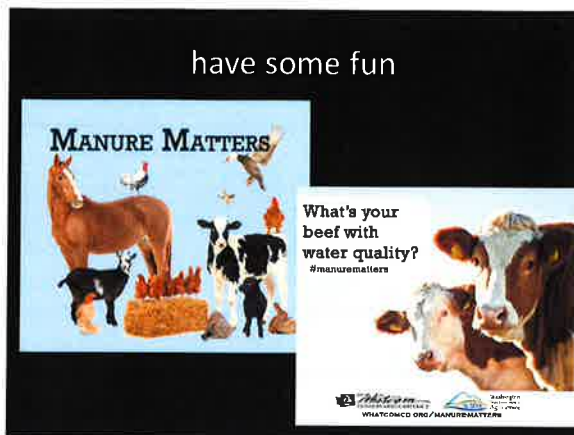
reach out to broader audiences






















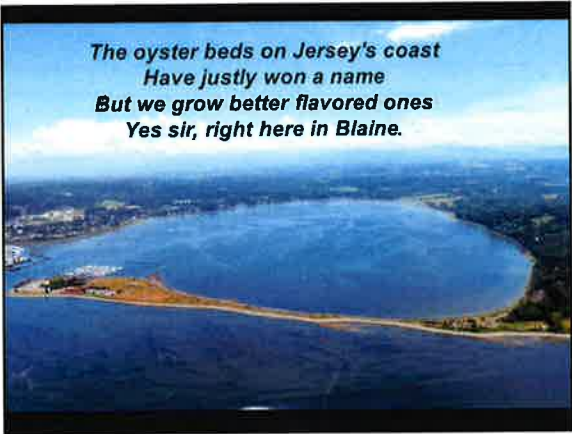


challenges

- Less obvious causes for water quality hot spots
- Providing services for diverse communities
- Keeping a level playing field
- Maintaining progress already made
- Long-term, sustainable program



community success



*The oyster beds on Jersey's coast
Have justly won a name
But we grow better flavored ones
Yes sir, right here in Blaine.*



