

Environmental Health

Sue Sullivan, Jennifer Hayden, James Hayes,
Tom Kunesh

March 7, 2023

Public Works and Health Committee Meeting




WHATCOM COUNTY
**HEALTH AND
COMMUNITY
SERVICES**



Env. Health Mandates and Requirements

- Whatcom County Code
- WA Admin Code
- FDA
- And many others!



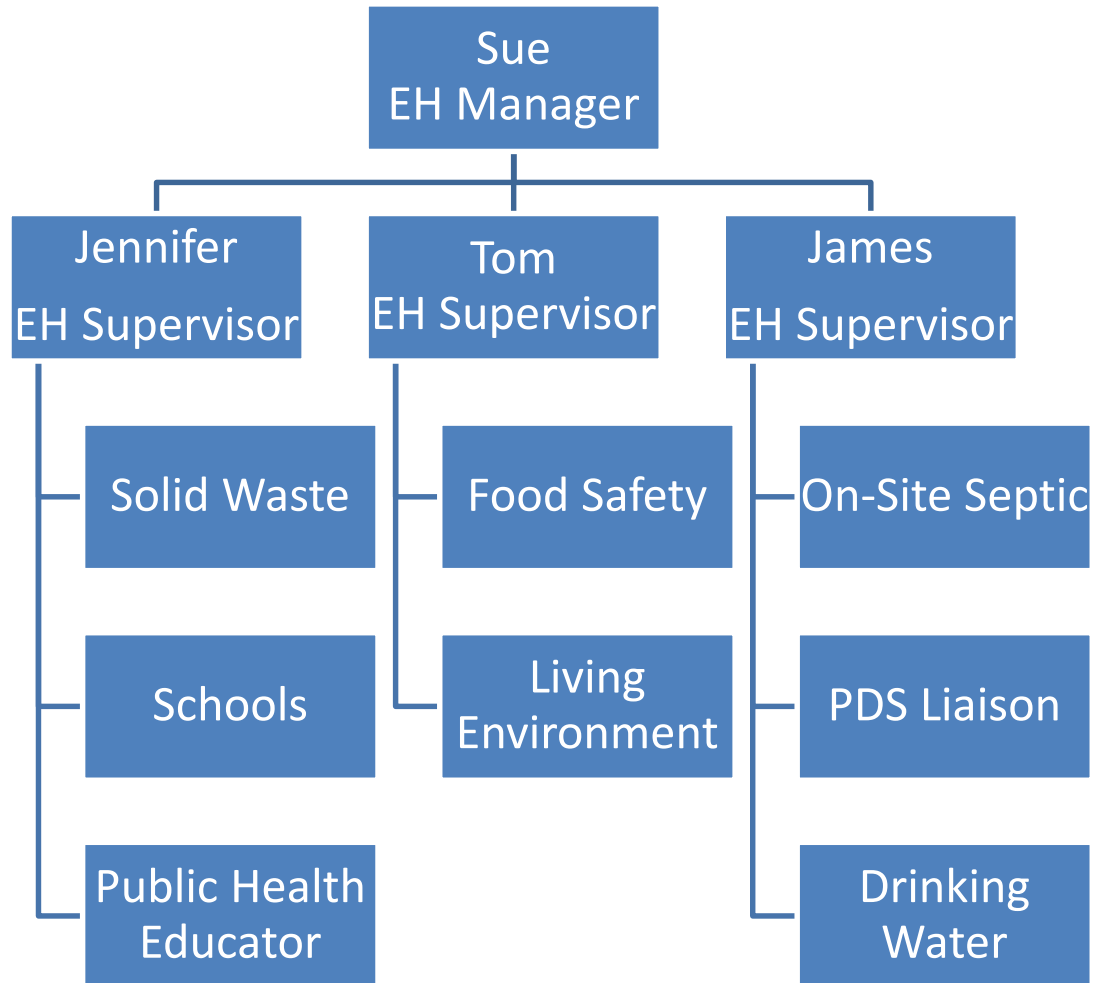


Focus on Disease and Injury Prevention

- Sanitation
- Safe food and water
- Proper disposal of wastes and toxics



Environmental Health Division





On - Site Sewage Program

- Operations and Maintenance
- Permitting
- Homeowner Education



Drinking Water

- Assessment of water quality and quantity



Solid Waste Enforcement

- Permit and inspect solid waste handling facilities
- Respond to solid waste complaints
- Pollution Prevention Assistance for businesses
- Methamphetamine Decontamination Guidance

Solid Waste Infrastructure

- Community Events
- Education and Outreach for Recycling, Composting and Waste Reduction
- Hazardous Waste Management
- Maintenance and Monitoring of Closed Landfills



Waste Tire Event



School Safety

- Plan Review
- Health and Safety Inspections
- Collaboration on Special Projects



Parkview Playground, January 2022



Kulshan Middle School Students, 2019

Food Safety

- Plan review
- Pre - Op and restaurant inspections
- Complaint and disease investigation

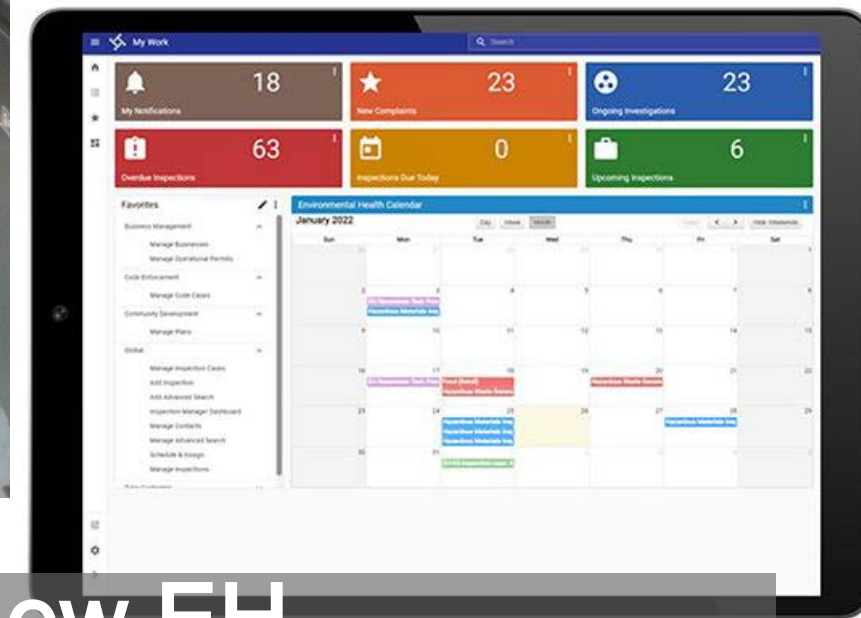


Living Environment



Bat and Deer Tick





Implementation of New EH Enterprise Software Solution

Updating technologies to streamline processes and provide enhanced customer service

An aerial photograph showing a vast landscape with a large body of water, likely a river or lake, winding through it. The water is a deep blue-grey color. The surrounding land is a patchwork of green fields and dark, dense forests. In the distance, there are more landmasses and a bright, hazy horizon under a sky filled with white and yellow clouds, suggesting a sunrise or sunset. The overall scene conveys a sense of environmental impact or natural disaster.

Foundational Public Health Services

New investment in previously underfunded and emerging EH issues

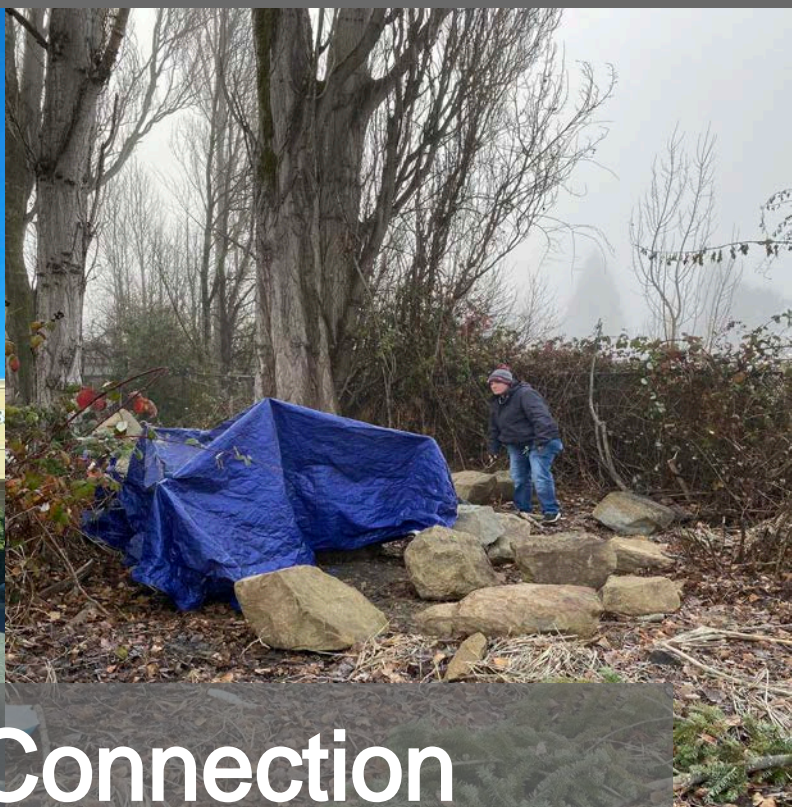


Climate Vulnerability Assessment

Identifying vulnerable populations and their ability to mitigate against wildfire smoke and extreme heat events



Wiser Lake – Harmful Algal Blooms



Enhancing Connection
to Support the
Unsheltered



Health Department All Staff Retreat,
June 2022



The logo features a circular emblem with a light blue border. Inside the circle are five stylized human figures of varying heights and colors (light blue, light green, light blue, light blue, and light blue). Below the circle is a light blue shadow.

Thank You!

WHATCOM COUNTY
HEALTH AND
COMMUNITY
SERVICES