



# Homeowner Incentive Program (HIP) Update

Ingrid Enschede, Whatcom County Public Works Natural Resources

Water Work Session

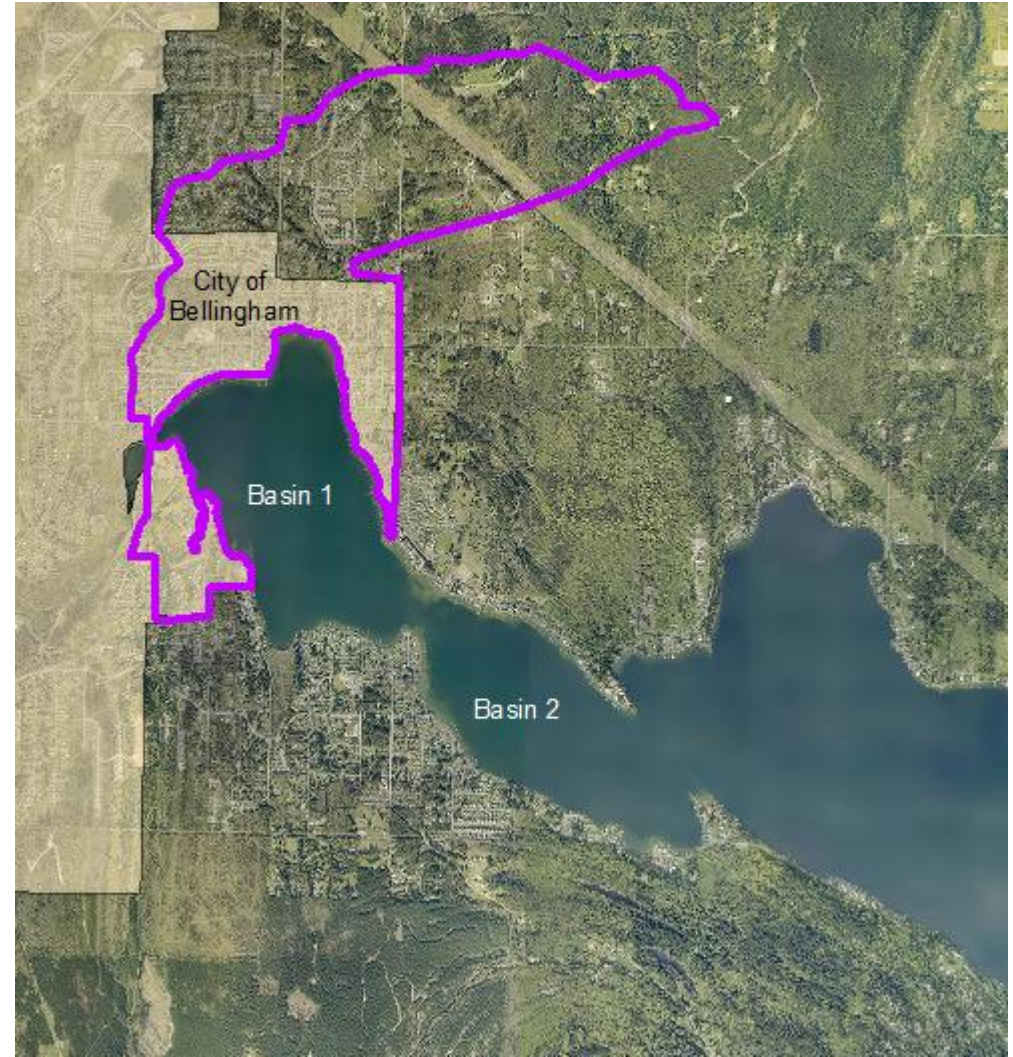
October 20, 2020



# HIP History

## HIP Pilot (HIP 1.0) 2011-2015

- Washington State Department of Ecology grant-funded
- City + county Silver Beach Creek neighborhood (~1,300 eligible properties)
- 16 BMPs offered
- Single program for all properties
- City managed
- City/county staffed including project design



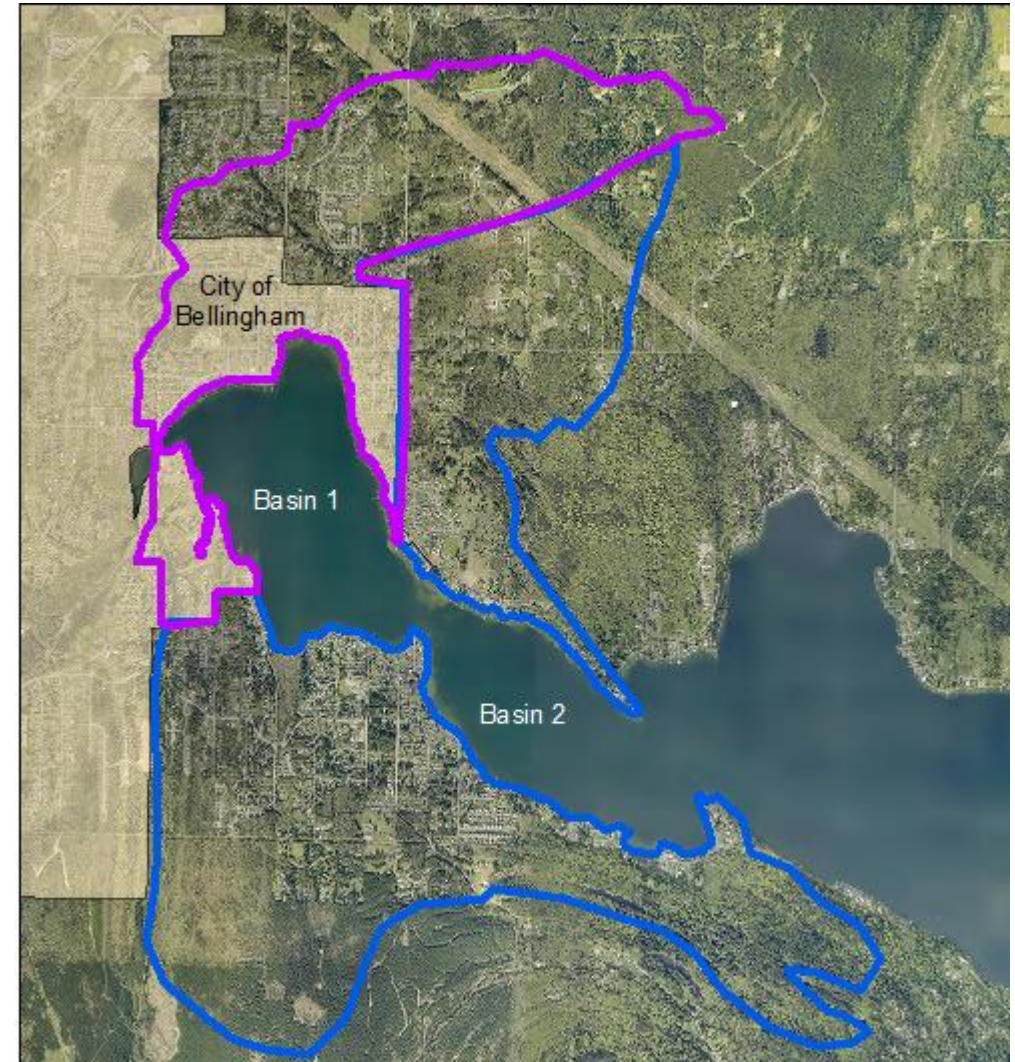




# HIP History

## HIP 2.0 2017-present

- Primarily city funded with county contribution \$100,000/year (Flood Fund)
- All of basins 1 and 2 (~2,600 eligible properties)
- 5 BMPs offered
- 2 tiers (target & DIY native landscaping)
- County managed
- Staffed by Whatcom Conservation District (WCD)
- Homeowners use private contractors for design/labor OR DIY with workshops with WCD help





## 2020 Update—COVID response

- In-person workshops cancelled
  - Online workshop option for DIY program
  - Professional training workshops on hold
- Safety protocol: <https://www.lakewhatcomhip.org/covid19safety/>
- Virtual info session (June 23)
- Native landscaping video tour: <https://www.lakewhatcomhip.org/general-program/>
- HIP homeowner spotlight videos





# Homeowner Spotlight Video Filming



BTV-10 staff helped develop a script and filmed DIY program ambassadors Anthony and Sherah Quattrocchi showcasing their new native landscaping with WCD staff Emily Hirsch.



## 2020 Update—Participation

- Pause during shut down (March – May)
  - Some homeowners on hold due to pandemic
- Participation picked up in June
- Target Program engagement
  - Current Status: 17 projects in design-construction phase (13 in county)
- DIY Program engagement
  - Current Status: 13 projects in design-construction phase (11 in county)



## 2020 Updates—Project examples (Target)



A large lawn project underway in Geneva includes dispersion trenches and native landscaping, total improvement area is 23,181 square feet.



## 2020 Updates—Project examples (DIY)



This DIY project in Silver Beach Creek used rocks as edging and to help keep mulch in place on a slope, total improvement area is 1,071 square feet. The homeowners are serving as ambassadors for HIP.



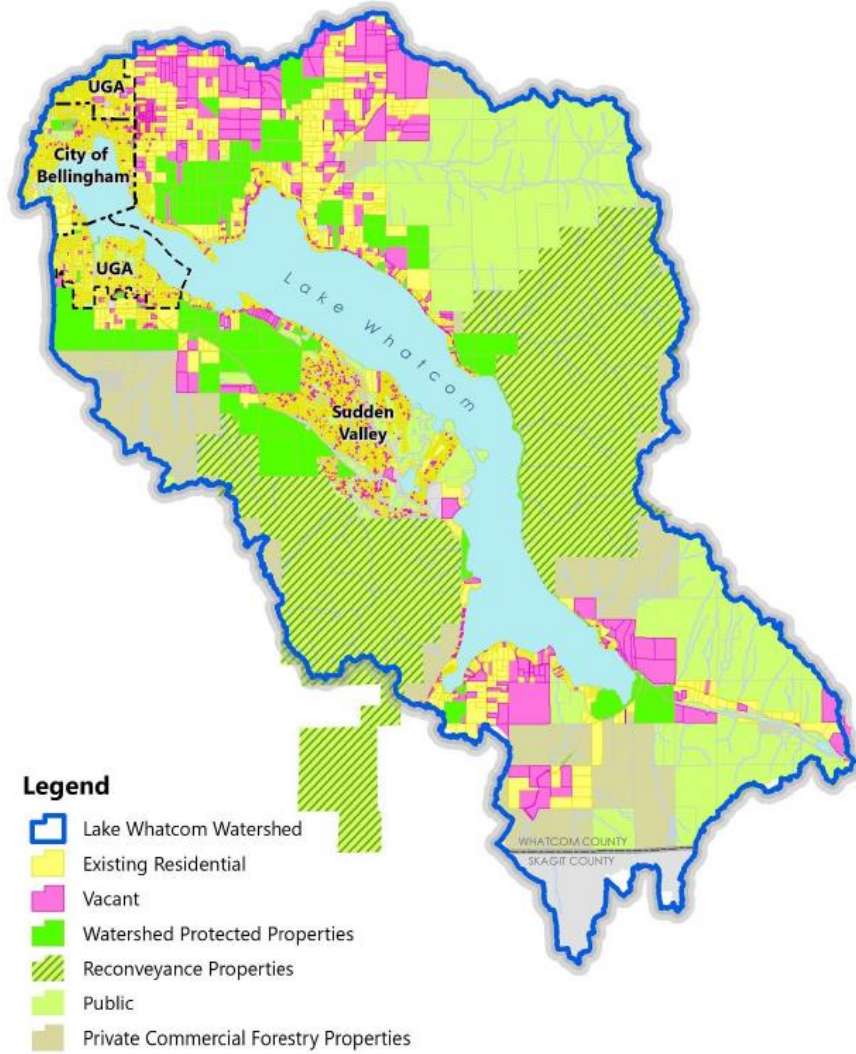


# 2021 Program Changes—Background

- Transitioning to each jurisdiction funding their own share
  - County Lake Whatcom Stormwater Utility began collecting fees 2020
- Expansion to Basin 3
  - Whatcom County eligible properties goes from ~ 1,900 to ~ 5,100
  - City eligible properties remains ~ 800
- Evolution of program to adapt to different circumstances within city and county jurisdictions



# 2021 Program Changes—Background



## City of Bellingham

- Urban residential neighborhoods
- ~25% of the watershed population
- Most areas drain to treatment facilities
- 6 new capital treatment projects currently identified in plan

## Whatcom County

- Mix of urban & rural residential neighborhoods, watershed protected properties, and private forestry
- ~75% of the watershed population
- Significant area remains for additional treatment facilities
- 29 potential new capital projects currently identified in plan
  - Subwatershed master planning underway





## 2021 Program Changes – County Goals

- Overall Lake Whatcom management goal of reducing phosphorus runoff efficiently to protect water quality
  - Capital/larger-scale projects offer more phosphorus reduction for the investment
- Focus county resources to meet TMDL objectives as quickly as possible
  - 29 potential capital projects currently identified
  - 18 private stormwater facilities offer options for neighborhood-scale homeowner retrofits
- Develop a broader homeowner retrofit program
  - HIP = individual lots, focus on small projects and stewardship engagement
  - HOA owned stormwater facility retrofits = neighborhood scale, focus on P reduction



## 2021 Program Changes – County HIP

- Streamline and simplify to reduce administration costs
- Continue partnership with Whatcom Conservation District
- Focus on stewardship benefits and more small projects installed
- Reduce barriers to increase participation
  - Maintenance agreement only
  - Options for labor reimbursement
- Maintain same \$1.30/square foot reimbursement rate for all





## 2021 Program Changes –County HIP

- Work with current target program participants to complete projects in 2021 (City reimbursed)
- Hybrid program for all
  - ~ \$6,000 maximum reimbursement/parcel
  - Focus on native landscaping BMP, option to include other BMPs if feasible
- Shoreline owners – option to install larger projects with HIP 2.0 target program rules



# 2021 Program Changes –Upcoming Agreements

- COB Interlocal Agreement Amendment
- New Interlocal Agreement with Whatcom Conservation District
- New Memorandum of Understanding with City





# Questions