
BRIEF SHEET AGENDA ITEM #7

MEETING: WRIA 1 Management Team
MEETING DATE: July 10, 2019
AGENDA ITEM: Agenda Item #7 Modifications to WRIA 1 Watershed Management Board Work Plan
OUTCOMES: Discussion; Recommendation to WRIA 1 Watershed Management Board

The purpose of this agenda brief sheet is to provide background information about the topic, recommendations, if applicable, and desired outcome.

Agenda Item:

Approval Agreement Direction Recommendation Information/Discussion

Agenda Outcome: Agree on Changes to Recommend to the WRIA 1 Watershed Management Board

Background:

- The WRIA 1 Watershed Management Board 5-Year Work Plan was approved August 1, 2018 with the understanding that comments made at that meeting would be addressed in a track-change document provided to the WRIA 1 Watershed Management Board at their next meeting.
- Through a series of Management Team meetings January-April 2019, Management Team members have discussed and recommended additional changes prior to presenting to the WRIA 1 Watershed Management Board.
- At the June 12th Management Team meeting, comments submitted by the WRIA 1 Planning Unit were discussed. The outcome of the Management Team discussion was to review the work plan and comments, and consider changes in response to the overarching comments that were presented in the Planning Unit packet.
- All of the text changes since August 2018 have been inserted and documented in a single, marked version of the August 1, 2018 WRIA 1 Watershed Management Board 2018-2022 Work Plan. In April, sidebars were inserted to document changes, the source of the comment leading to the change, and, where applicable, the date the Management Team reviewed and approved for recommendation language changes. Changes made in response to the Planning Unit comments received by the Management Team for its June 12th meeting are highlighted in yellow.
- A summary document is attached (Attachment A) to this Brief Sheet that provides additional background and chronology of changes made as well as a summary of the changes and status (e.g., recommended for approval). Additionally, line number are provided where the responses are found in the track-change version of the August 1, 2018 WRIA 1 Watershed Management Board Work Plan (Attachment B).
- The WRIA 1 Watershed Management Board meeting is scheduled for July 25, 2019. A recommendation from the Management Team on modifications to the language in the August 1, 2018 WRIA 1 Watershed Management Board Work Plan is planned as an agenda item on the July 10th Management Team agenda.

Background/Chronology of Comments

August 1, 2018 Approval - The August 1, 2018 WRIA 1 Watershed Management Board Work Plan was approved by the WRIA 1 Watershed Management Board (WRIA 1 Board) with the intent that staff would incorporate responses to comments provided at that meeting. The changes would be provided as track changes for review by the WRIA 1 Board at an upcoming meeting.

Changes to address the August 1st comments were incorporated and presented to the WRIA 1 Management Team at its October 24, 2018 meeting. The Management Team approved the changes to recommend to the WRIA 1 Board.

Management Team Suggested Changes/Additions - Since the October 24, 2018 Management Team meeting, several changes and additions have been suggested by Management Team members including eliminating redundancies in references to input under individual strategies, eliminating the reference to an ESSB 6091 update under Strategy 6: Watershed Management Plan Update, providing additional detail for updating of the salmon recovery plan (Strategy 5), and including an additional Co-Manager strategy for hatcheries (proposed Strategy 9). Additionally, while not referencing Strategy 1: WRIA 1 Watershed Management Board Work Plan Implementation and Administration, the Management Team has had several discussions regarding improved management and implementation of actions, which does relate to Strategy 1.

June 12, 2019 Planning Unit Comments - For the June 12, 2019 Management Team meeting, an Agenda Brief Sheet was provided that included comments from the WRIA 1 Planning Unit on the August 1, 2018 WRIA 1 Watershed Management Board Work Plan. The comments submitted included a 2017 letter to the County Council that identified goals for water resource programs and detailed comments by task. The Planning Unit indicated the 2017 letter with the general goals are overarching comments to consider in the WRIA 1 Watershed Management Board Work Plan and the detailed comments are suggested approaches for achieving the overarching comments. The outcome of the June 12th Management Team meeting was to review the August 1, 2018 Work Plan for opportunities to incorporate changes in response to the overarching comments for the Management Team to consider at its July 10th meeting.

Documented Changes - All changes in the track-change version of the August 1, 2018 WRIA 1 Watershed Management Board Work Plan is incorporated in a single document (Attachment B). Sidebar boxes are provided that include: a. the date the changes were made, discussed at a Management Team meeting or the date the change was documented with sidebars, b. the line number(s) where the change is found, and c. a brief explanation of the change. There is a legend on the first page of the track-change version that explains the highlighted sidebar dates and yellow highlights in the document text.

Overview of Key¹ Changes to the August 1, 2018 WRIA 1 Watershed Management Board Work Plan

Changes to the August 1, 2018 Work Plan is summarized below as three groupings: A. Responses to the comments made at the August 1, 2018 WRIA 1 Watershed Management Board meeting; B. Responses to comments and suggestions made by Management Team members at Management Team meetings since January 2019, and C. Responses to comments received from the WRIA 1 Planning Unit. The status of the

¹ There are a number of editorial and administrative changes that are shown in the track-change version that are not summarized or highlighted for Management Team's decision-making purposes.

changes – approved or not approved – is also provided for each category. Line numbers correspond to Attachment B track change version of the WRIA 1 Watershed Management Board Work Plan

A. Source: August 1, 2018 WRIA 1 Watershed Management Board Meeting

Status of changes: All changes but 2.b. were approved by the Management Team October 24, 2018

1. Changes to clarify where and how water quality is incorporated in the August 1, 2018 work plan:
 - a. Expanded the discussion on complementary programs and where water quality is being addressed (Lines 96-112)
 - b. Included language that the annual review will include considering whether water quality, stormwater and stream flows are being addressed as intended under the strategies in the August 1, 2018 work plan (Lines 153-161)
2. Include language clarifying there will be opportunities for Planning Unit and public input.
 - a. Language added in paragraph prior to the individual strategies and tasks as an overall statement of intent (Lines 256-259)
 - b. *New Language added 6/29/19* - Language added and expanded under Strategy 1 related to receiving input on annual implementation schedules and related work (lines 290-308)

B. Source: Management Team Meetings January –May 2019

Status of changes: None of these changes have had Management Team approval

1. Lummi Nation requested a Co-Manager hatchery section be added to the WRIA 1 Watershed Management Board 2018-2023 Work Plan:
 - a. Included placeholder language for Strategy 9: Hatcheries (Lines 113-115; Footnote 5; Summary Table of Strategies, Line 239 to Add Strategy 9 in table; Lines 697-701)
2. City of Bellingham suggested striking references in each strategy to public and Planning Unit input because it is redundant with the overarching statement of opportunities for public, Planning Unit, and other committee input. The exception to this is Strategy 6: Watershed Management Plan Update given the Planning Unit has a designated role under RCW 90.82.
 - a. Removed references to receiving input (lines 412, 488, 511, 651).
 - b. References to Planning Unit retained in Strategy 6 (Lines 594-607)
3. Nooksack Tribe has provided comment on the need to define “in conjunction with” the WRIA 1 Planning Unit under Strategy 6: Watershed Management Plan Update (Lines 599-601; Lines 606-607)
4. City of Bellingham requested clarifying language and expanded discussion of Task 1 under Strategy 5: Salmon Recovery Plan Implementation as it pertains to updating of the 2005 WRIA 1 Salmonid Recovery Plan.
 - a. City of Bellingham, Nooksack Indian Tribe, and Lummi Nation Natural Resources staff worked together to develop language to address the City’s request (Lines 538-559)
5. Management Team as a whole has discussed the need to improve the overall management and implementation of the WRIA 1 Watershed Management Board actions and functions. The intent of developing a multi-year WRIA 1 Watershed Management Board work plan was to focus implementation efforts.

- a. Language has been added to Strategy 1 that provides additional details associated with annual review of progress and setting annual implementation schedules that are appended to the multi-year work plan (Lines 290-308). This additional language is also provided as a response to comments submitted by the Planning Unit for increased accountability, management, and transparency, which is why they show up as yellow highlighted sidebar text in the redline version of the August 1, 2018 WRIA 1 Watershed Management Board Work Plan.

C. Source: Planning Unit Over-Arching and Detailed Comments Submitted to Management Team June 12th
Status: These are all new responses; all responses are highlighted in yellow in the redline version of the August 1, 2018 WRIA 1 Watershed Management Board Work Plan

1. Overarching comments submitted by the Planning Unit for the Management Team's meeting on June 12th and discussions they have had regarding the work plan appear to involve accountability in the form of demonstrating progress, measuring effectiveness, and achieving goals, and transparency of actions.
 - a. Language has been incorporated throughout the work plan to include language for reporting on actions and expanding work products to include meeting summaries.
 - b. Language has been added to Strategy 1 that describes an annual review of strategies and reporting. The annual review should include setting milestones for the work to be completed each year and opportunities for input. (Lines 290-308). This response to Planning Unit comments is the same as that provided under B. 5.a. above in response to Management Team's discussions related to work plan implementation.
 - c. Language for opportunities for input is provided in Lines 290-308 as well as 257-259. There is separate language for Planning Unit involvement in Strategy 6: Watershed Management Plan Update, which recognizes their role described in RCW 90.82.
 - d. Language added to document barriers and resolution of barriers and coordination with other programs as part of an annual work plan as one way to identify effectiveness of efforts (Lines 312-314; Lines 331-333).
2. Planning Unit discussion at the June 26th Planning Unit requested that the term "WRIA 1 framework" be defined since it is unclear as to whether the Planning Unit is being folded into the framework, whether the reference is to the 90.82 framework, or if it is the 2016 Interlocal Agreement.
 - a. Language is inserted throughout the work plan to identify "WRIA 1 framework" as the framework of the 2016 Interlocal Agreement.
3. Some Planning Unit members expressed concern at the June 26th Planning Unit meeting that the role of the Planning Unit under RCW 90.82 is not being recognized in the August 1, 2018 WRIA 1 Watershed Management Board Work Plan.
 - a. In addition to the existing footnote for Figure 2 (Lines 236-238), footnote 17 is added that recognizes the Planning Unit's 90.82 role under Strategy 6: WRIA 1 Watershed Management Plan (Line 257, Footnote 17)
4. Public comment made at the June 26th Planning Unit meeting indicated that there may be a need for additional background regarding the WRIA 1 Watershed Management Board and its transition from the previous structure of two separate WRIA 1 Boards: WRIA 1 Joint Board and WRIA 1 Salmon Recovery Board.
 - a. New background paragraph provided (Lines 1-21)



WRIA1 INTEGRATED PROGRAM MANAGEMENT

WRIA 1 Watershed Management Board

Bellingham • Blaine • Everson • Ferndale • Lynden • Nooksack • Sumas • Whatcom County • Public Utility District No. 1 of Whatcom County
Lummi Nation • Nooksack Indian Tribe • Washington Department of Fish and Wildlife



WRIA 1 Watershed Management Board 2018-2023 Work Plan August 1, 2018

1
2
3
4
5
6
7
8
9
10
11
12
13
14
15
16
17
18
19
20
21
22
23
24
25
26
27
28
29
30
31
32
33
34
35

Background

The WRIA 1 Watershed Management Board is an integrated, multi-government structure for coordinating and facilitating implementation of WRIA 1 programs including the WRIA 1 Watershed Management Project, WRIA 1 Salmon Recovery Program, and the Whatcom Local Integrating Organization. The WRIA 1 Watershed Management Board was established by Interlocal Agreement in December 2016. Prior to the 2016 Interlocal Agreement, the entities represented on the WRIA 1 Watershed Management Board functioned as two Boards under separate Interlocal Agreements: the WRIA 1 Watershed Management Project Joint Board for purposes of the WRIA 1 planning process under RCW 90.82 and the WRIA 1 Salmon Recovery Board for purposes of salmon recovery lead entity for WRIA 1 under RCW 77.85.050. In 2016, the WRIA 1 Joint Board and WRIA 1 Salmon Recovery Board agreed to formalize the advancement of the integrated implementation structure that had been progressing in increments since 2007 under a new Interlocal Agreement that retains a collaborative multi-jurisdictional decision-making process and combines the duties and functions of the roles under the previous agreements. The 2018-2023 WRIA 1 Watershed Management Board Work Plan represents an integrated work plan to advance implementation of actions associated with the primary functions of the WIRA 1 Board.

Introduction

The WRIA 1 Watershed Management Board¹ (WRIA 1 Board) directed its Management Team to propose an integrated multi-year work plan, budget and funding strategy to advance WRIA 1 program and plan strategies that are a function of the WRIA 1 Board. Under its 2016 Interlocal Agreement², the three primary program functions of the WRIA 1 Board include:

1. facilitate implementation and adaptive management of the WRIA 1 Watershed Management Plan-Phase 1 as currently constituted or subsequently amended;
2. Coordinate implementation and adaptive management of the WRIA 1 Salmonid Recovery Plan and associated implementation document, serve as the Lead Entity for salmon recovery in WRIA 1, coordinate participation in Puget Sound salmon recovery efforts, and coordinate development, implementation, and adaptive management of WRIA 1

¹-WRIA 1 Watershed Management Board name was established with the execution of the December 2016 Interlocal Agreement that consolidated the WRIA 1 Salmon Recovery Board and WRIA 1 Watershed Joint Board and their associated programs, roles and responsibilities under a single Interlocal Agreement.

²wria1project.whatcomcounty.org/uploads/PDF/Guiding%20Documents%20and%20Plans/WRIA%201%20Watershed%20Management%20Board%20ILA%20-%20FINAL%20with%20signatures.pdf

Sidebar Color Legend:

Green Highlight – generally, response to Management Team comment

Blue Highlight – generally, response to August 1st Watershed Board Mtg comments; most language approved by Management Team in October

Yellow Highlight – generally, response to Planning Unit comments and discussions

No Highlight – generally an administrative change for consistency

06-29-2019

Explanations of Changes

Lines 1-21 – The “Background” section was added to clarify and increase understanding of the 2016 ILA, and planned transition of the WRIA 1 Joint Board and WRIA 1 Salmon Recovery Board to a single integrated WRIA 1 Board. It was added in response to comments made at 6/26 Planning Unit meeting. Adding the background eliminates the need for Footnote 1.

04-11-2019

Explanations of Changes

Footnote2- All links will be just to the home page rather than to individual documents. This will help reduce future potential for broken links.

36 watershed chapters of recovery plans for ESA listed salmonids and
37 other salmonid species as warranted; and
38 3. Coordinate planning, implementation, monitoring and adaptive
39 management of ecosystem recovery actions in WRIA 1 and serve as
40 the Whatcom Local Integrating Organization.

41 The proposed multi-year plan spans a five-year timeframe and integrates
42 actions from the existing WRIA 1 programs described below and, consistent
43 with the WRIA 1 Watershed Management Board December 2016 Interlocal
44 Agreement, begins to integrate other natural resource management efforts
45 that are inextricably linked.

46 *WRIA 1 Watershed Management Project*

47 The WRIA 1 Watershed Management Project foundation is the 2005 WRIA 1
48 Watershed Management Plan (WRIA 1 WMP). The WRIA 1 WMP includes
49 the WRIA 1 Instream Flow Selection and Adoption Action Plan (ISF Action
50 Plan) and the over-arching WRIA 1 Long Term Monitoring Plan. Also
51 associated with the WRIA 1 WMP are the WRIA 1 Detailed Implementation
52 Plan and the Lower Nooksack Strategy, which is a subset of implementation
53 actions in the WRIA 1 WMP and Detailed Implementation Plan. The WRIA 1
54 Watershed Management Project studies and documents are found at the
55 project website, which is wria1project.whatcomcounty.org/.

56 *WRIA 1 Salmon Recovery Program*

57 The WRIA 1 Salmon Recovery Program includes the 2005 *WRIA 1 Salmonid*
58 *Recovery Plan* and associated implementation documents (restoration
59 strategy, SRFB/PSAR restoration priorities, 4-year work plan, Nooksack
60 Chinook monitoring and adaptive management framework). The *WRIA 1*
61 *Salmonid Recovery Plan* identifies recovery goals for North/Middle Fork
62 Nooksack early Chinook and South Fork Nooksack early Chinook, both
63 independent populations essential for recovery of the Endangered Species
64 Act-listed Puget Sound Chinook, limiting factors, and management actions;
65 the *WRIA 1 Salmonid Recovery Plan* serves as the Nooksack chapter of the
66 Puget Sound Chinook Recovery Plan. Additional functions of the WRIA 1
67 Salmon Recovery Program include coordinating the local element of the
68 annual salmon recovery funding grant process and submitting an approved
69 project list for state Salmon Recovery Funding Board consideration, updating
70 annual habitat restoration strategy documents, and coordinating
71 implementation of key actions in the *WRIA 1 Salmonid Recovery Plan*. The
72 WRIA 1 Salmon Recovery Program plans and background information are
73 found at the project website, which is salmonwria1.org/.

74 *Whatcom Local Integrating Organization*

75 The WRIA 1 Board serves as the Whatcom Local Integrating Organization
76 (LIO), which is one of nine LIOs recognized by the Puget Sound Partnership.

77 The purpose of the Whatcom LIO is to coordinate local recovery actions that
 78 will support Puget Sound recovery, maintain a point of contact for Puget
 79 Sound Action Agenda implementation, and provide local feedback to Puget
 80 Sound recovery strategies. A Whatcom LIO Ecosystem Recovery Plan was
 81 drafted under the framework provided by the Puget Sound Partnership. The
 82 LIO plan builds from and integrates existing local plans and programs. The
 83 June 30, 2017, Draft Whatcom LIO Ecosystem Recovery Plan³ will be
 84 adaptively managed and updated to reflect the WRIA 1 Watershed
 85 Management Board Five-Year Work Plan. Information related to the
 86 Whatcom Local Integrating Organization is found at
 87 [WRIA1project.whatcomcounty.org/Get-Involved/Whatcom-Local-Integrating-Organization-\(LIO\)/109.aspx](http://WRIA1project.whatcomcounty.org/Get-Involved/Whatcom-Local-Integrating-Organization-(LIO)/109.aspx).

04-11-2019
Explanations of Changes
 Lines 87-88: 10/24/18 approval by Management Team
 Lines 93-4: 10/24/18 approval by Management Team

89 **Relationship of WRIA 1 Watershed Management Board 2018-2023 Work Plan to Other Programs**

90
 91 The WRIA 1 Watershed Management Board multi-year plan includes eight
 92 strategies that represent a subset of actions from existing WRIA 1 programs
 93 and plans ~~and are~~ also consistent with the WRIA 1 Board’s purpose,
 94 outlined in the 2016 Interlocal Agreement, to coordinate with and integrate
 95 other natural resource management actions implemented through other
 96 complementary programs (Figure 1). Complementary programs include but are not limited to efforts such as the Whatcom Clean Water Program, the Whatcom County River and Flood Division floodplain integrated planning, and the Watershed Improvement District’s planning. The complementary efforts are related to the WRIA 1 Watershed Management Board’s Work Plan because they play an important role in Whatcom LIO ecosystem recovery planning and Puget Sound recovery to address identified vital signs⁴ and they are associated with addressing elements of the WRIA 1 Watershed Management Plan and WRIA 1 Salmonid Recovery Plan including:

04-11-2019
Explanations of Changes
 Lines 91-111 including footnote: 10/24/18 approval by Management Team
 Line 112: 2/21/19 Nooksack Tribe comments to include climate change impacts.

- 105 • Water quality including both fresh water and marine water;
- 106 • Water quantity including for instream resources and out of stream resources;
- 107
- 108 • Floodplains;
- 109 • Shellfish;
- 110 • Chinook (and other salmon); ~~and~~
- 111 • Habitat; and
- 112 • Climate change impacts.

³ The Draft Whatcom LIO Plan was prepared in accordance with planning grants to local integrating organizations around Puget Sound to develop local ecosystem recovery plans that will support Puget Sound recovery. It conforms to the framework developed to meet the interests of the Puget Sound Partnership

⁴ Human components identified include viable agriculture, fisheries and forestry economies, public safety, recreation, cultural well-being, recreation, and employment.

113 A ninth strategy - Hatcheries – is a Salmon Co-Manager element (Lummi
114 Nation, Nooksack Indian Tribe, and Washington Department of Fish and
115 Wildlife) to develop a strategy related to hatcheries⁵.

116 As shown in Figure 1, the Coordination and Implementation Strategy
117 (Strategy 1) is the overall coordination, management, reporting, and
118 administrative oversight for planning and implementing projects, programs,
119 and plans under the WRIA 1 Watershed Management Board. The
120 coordination task outlined in Strategy 1 supports the coordination tasks
121 identified in Strategies 2-8 and provides the linkage to complementary
122 programs and actions. ~~Complementary programs, actions, and plans include~~
123 ~~but are not limited to efforts such as the Whatcom Clean Water Program, the~~
124 ~~Whatcom County River and Flood Division floodplain integrated planning,~~
125 ~~and the Watershed Improvement Districts' planning. The complementary~~
126 ~~efforts are related to the WRIA 1 Watershed Management Board's Work Plan~~
127 ~~because they play an important role in local ecosystem recovery planning~~
128 ~~and Puget Sound recovery (Strategy 8).~~ Strategies 2-6 are implementation
129 actions associated with the planning documents identified in the WRIA 1
130 Watershed Management Board's functions outlined in the 2016 Interlocal
131 Agreement and lead to adaptive management of those plans. Many of the
132 tasks in Strategies 2-6 are interdependent and linked. This is the area of the
133 multi-year work plan that is likely to see the most adjustments on an annual
134 basis. Strategy 7, Integrated Monitoring and Central Data Management,
135 supports and informs the implementation actions (Strategies 2-6). Outcomes
136 from Strategies 1-7 including continued interaction with complementary
137 programs inform adaptive management of the Whatcom LIO Ecosystem
138 Recovery Plan and future local actions that achieve Puget Sound recovery for
139 consideration in the next Puget Sound Action Agenda update (Strategy 8).

140

06-26-2019
Explanations of Changes

Lines 113-115 including footnote 5: Additional language to include developing a strategy for hatcheries added at the request of the Lummi Nation.

06-29-2019
Explanations of Changes

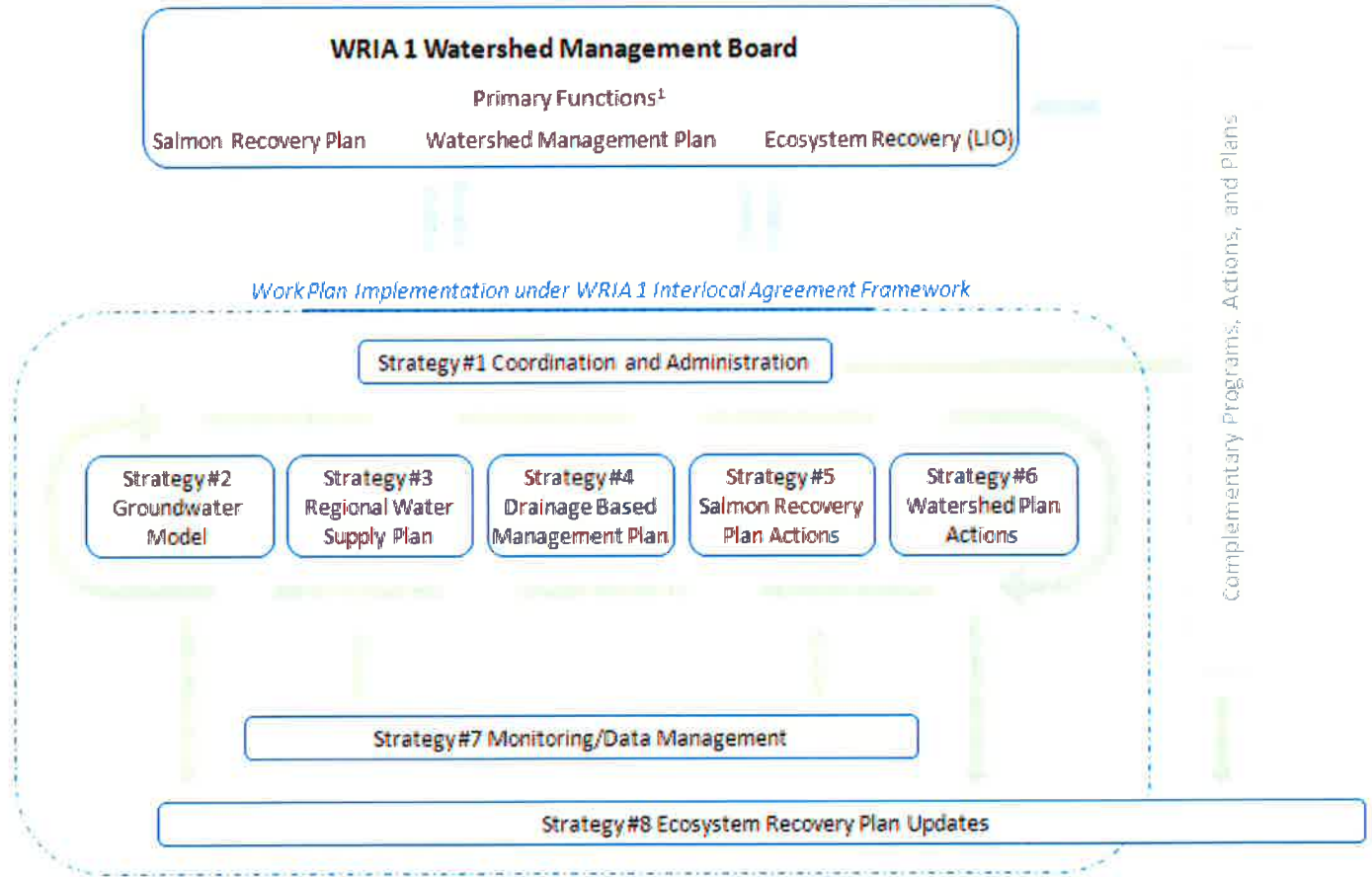
Lines 117-119 blue font with yellow highlight was added in response to Planning Unit comments.

04-11-2019
Explanations of Changes

Lines 122-128: 10/24/18 approval by Management Team

⁵ This strategy has been included at the request of the Lummi Nation.

1. Figure 1. 2018-2023 WRIA 1 Watershed Management Board Work Plan Strategies and Relationship to Complementary Programs, Actions, and Plans



¹The primary functions of the WRIA 1 Watershed Management Board are described in the December 2016 Interlocal Agreement.

142 **WRIA 1 2018-2023 Work Plan and Funding Strategy Format**

143 The 2018-2023 WRIA 1 Watershed Management Board’s multi-year plan is
144 intended as a five-year integrated strategy for implementing and sequencing
145 actions that address water quality, water quantity, floodplains, salmon
146 recovery, and stormwater. It is anticipated that the actions implemented in
147 the 2018-2023 plan will also support negotiation of water rights among the
148 affected parties.

149 While the 2018-2023 Plan identifies “administrative leads” for individual
150 strategies, the intent is to implement the strategies within the overall
151 structure and decision-making process of the WRIA 1 Watershed
152 Management Board and 2016 Interlocal Agreement (Figure 2).

153 The level of detail is greatest for the first two years of the work plan and will
154 continue to be developed for each strategy as part of implementing the
155 strategy. Work Plan status progress will be reviewed annually by the WRIA 1
156 Management Team, with recommendations to the WRIA 1 Board for and
157 updates as needed. The annual review will also include considering if the
158 intent of addressing water quality, stormwater, and stream flows, and
159 climate change impacts as part of broader strategies is occurring or whether
160 the work plan should include stand-alone strategies for one or all of those
161 elements. Following is a description of the plan sections:

162 **Section I: Narrative**

163 The first section of the work plan is a narrative that provides a description of
164 each strategy. Under each strategy is a list of the general tasks, anticipated
165 milestones, and estimated-planning-level budgets. Many of the tasks listed
166 under a strategy are interdependent with or support tasks in other
167 strategies. These dependencies are referenced in the narrative and are
168 shown on the timeline that is in Section II of the work plan.

169 **Section II: Timeline**

170 Section II is an overall timeline for the full five-year work plan and funding
171 strategy. The timeline shows the administrative lead for the listed strategy,
172 scheduled tasks and where there are tasks that are dependent on or
173 supporting other tasks. As with the overall 2018-2023 Plan, the level of
174 detail in the timeline is greatest for the first two years and will continue to be
175 developed as the administrative lead for each strategy initiates
176 implementation. The timeline will be reviewed annually and adjusted as
177 needed.

178 **Section III: Technical Appendices**

179 The technical appendices will include the highest level work plans available
180 for actions that are implemented under the WRIA 1 Watershed Management

04-11-2019
Explanations of Changes
Lines 153-161 [except yellow highlighted text]: 10/24/18 approval by Management Team [reference to climate change impacts added based on 2/21 comments]
Line 159: 2/21/19 Nooksack Tribe comments to include climate change impacts
Line 165: 10/24/18 approval by Management Team
Line 174-176: 10/24/18 approval by Management Team
Lines 181-182: 10/24/18 approval by Management Team

06-29-2019
Explanations of Changes
Lines 155-156 blue font with yellow highlight was added in response to Planning Unit comments.

181 | Board's 2018-2023 Work Plan and Funding Strategy. Not all strategies have
182 | higher level work plans associated with them, and therefore are not
183 | represented in the technical appendices. As additional details or scopes of
184 | work for implementing strategies are finalized, they will be added to the
185 | Technical Appendices.

186 | **Management**

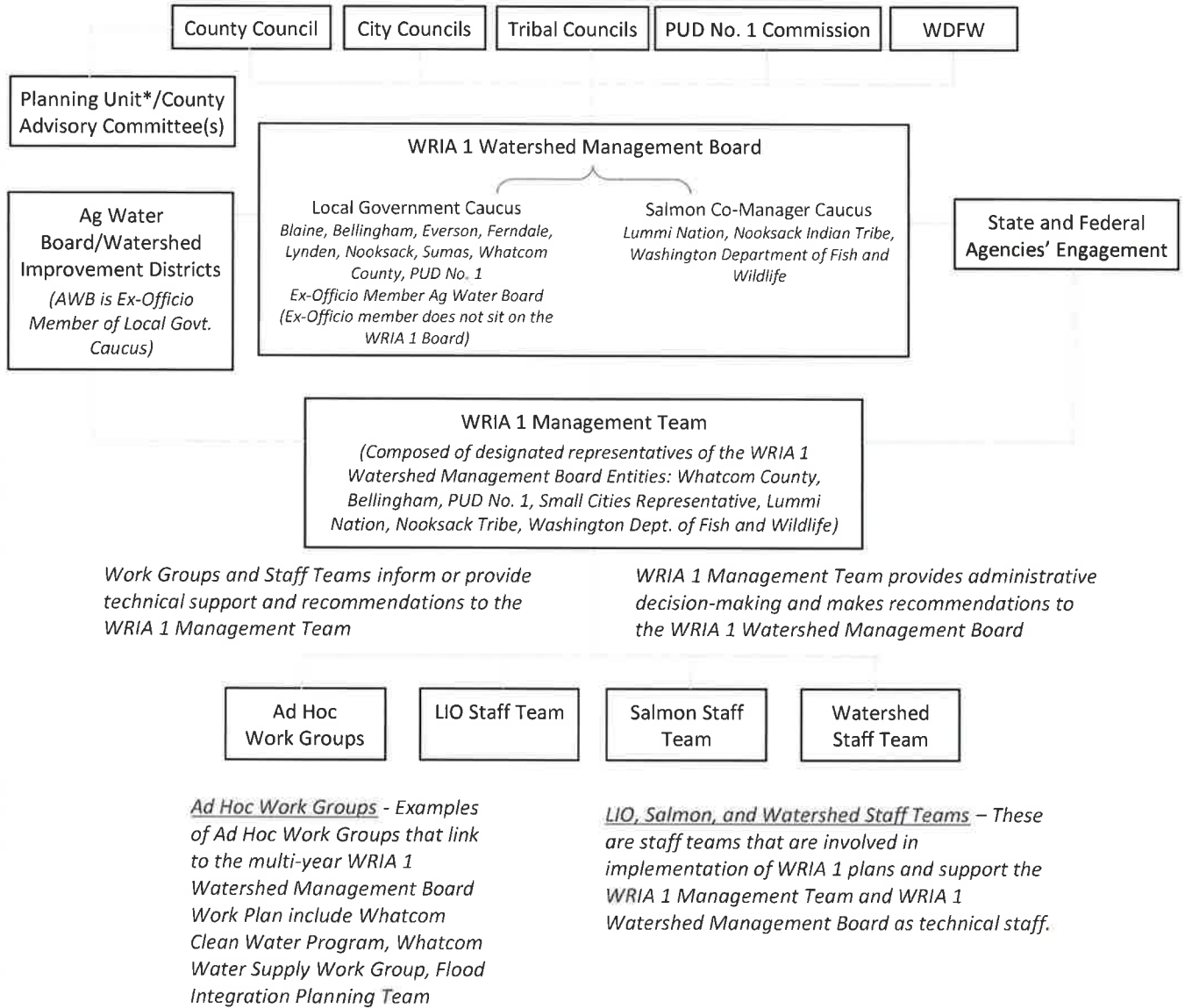
187 | The WRIA 1 Watershed Management Board intends to coordinate the work
188 | plan as it is adopted by the Members, and will support efforts to obtain
189 | funding. The WRIA 1 Management Team will administer the work on behalf
190 | of the WRIA 1 Watershed Management Board as described in Strategy 1
191 | WRIA 1 Watershed Management Board Work Plan Implementation and
192 | Administration. Administrative leads are identified for each of the strategies
193 | to coordinate and oversee implementation and individual entities or
194 | consultants may be contracted with to implement tasks within strategies.
195 | Individual tasks/strategies may be implemented by individual member
196 | entities.

06-29-2019
Explanations of Changes

Lines 183-185: blue font with yellow highlight was added in response to Planning Unit comments.

Line 193: blue font with yellow highlight was added in response to Planning

197 Figure 2. WRIA1 Watershed Management Board Structure (Source: 2016 WRIA 1 Interlocal Agreement clarified to reflect Ex-
 198 Officio representation)



236 *This diagram reflects the Planning Unit's advisory function to the Whatcom County Council under
 237 Whatcom County Resolution #2013-025. The Planning Unit also has designated roles with
 238 respect to watershed planning as described in RCW 90.82 and ESSB 6091.

239 **Summary of Strategies and Budget Estimates***

Strategy	Administrative Lead ⁶	Years 1-2	Years 3-5	Total for 5-Year Plan
Strategy 1: Implementation and Administration	WCPW ⁷	\$136,000	\$306,000	\$442,000
Strategy 2: Ground Water Model and Technical Support	WCPW ⁸	\$85,000	\$345,000	\$430,000
Strategy 3: Regional (WRIA-Wide) Water Supply Plan	PUD No. 1 ⁹	\$222,500	\$170,000	\$392,500
Strategy 4: Drainage Based Management Planning	WCPW ¹⁰	\$112,500	\$337,500	\$450,000
Strategy 5: Salmon Recovery Plan Implementation	Co-Managers ¹¹	\$570,000	\$1,115,000	\$1,685,000
Strategy 6: WRIA 1 Watershed Management Plan Update	WCPW ¹²	\$208,500	\$60,000	\$268,500
Strategy 7: WRIA 1 Integrated Monitoring and Data Management	PUD No. 1 ¹³	\$877,220	\$1,326,289	\$2,203,509
Strategy 8: Whatcom LIO Coordination and Adaptive Management	WCPW ¹⁴	\$42,500	\$60,000	\$102,500
<u>Strategy 9: Hatcheries</u>	<u>Co-Managers¹⁵</u>	<u>TBD</u>	<u>TBD</u>	<u>TBD</u>

240
241
242

*Estimates will be updated as they are refined; for many tasks the estimates are for planning purposes.

⁶ Administrative lead coordinates and oversees implementation within the framework of the WRIA 1 Watershed Management Board 2016 Interlocal Agreement.

⁷ WCPW has historically been the lead for administering the WRIA 1 collaborative planning process on behalf of the WRIA 1 Joint Board and they are the owner of the 2018-2022 Near Term Action submitted for funding consideration as part of the Puget Sound Action Agenda process.

⁸ WCPW is currently the lead for the construction of the groundwater model.

⁹ The PUD No. 1 was lead for this task under the Lower Nooksack Strategy and is the owner of the 2018-2022 Near Term Action submitted for funding consideration as part of the Puget Sound Action Agenda process.

¹⁰ WCPW is the owner of the 2018-2022 Near Term Action submitted for funding consideration as part of the Puget Sound Action Agenda process.

¹¹ The Lummi Nation has been the fiscal agent on behalf of the WRIA 1 Watershed Management Board for receiving and administering salmon recovery lead entity grant funds. The Co-Managers are also owners of several 2018-2022 Near Term Actions associated with salmon recovery monitoring and adaptive management.

¹² WCPW is currently lead for updating the WRIA 1 Watershed Management Plan; Whatcom County is lead agency.

¹³ PUD No. 1 is the owner of the 2018-2022 Near Term Action submitted for funding consideration as part of the Puget Sound Action Agenda process.

¹⁴ WCPW is currently fiscal agent acting on behalf of the WRIA 1 Watershed Management Board for receiving and administering the LIO coordination grant.

¹⁵ The Co-Managers include the Lummi Nation, Nooksack Indian Tribe, and Washington Department of Fish and Wildlife.

06-26-2019
Explanations of Changes

Add Strategy 9 placeholder to summary table including footnote15 identifying Co-Managers.

06-29-2019
Explanations of Changes

Footnote 6 blue font with yellow highlight added in response to Planning Unit comments.

243 SECTION I - NARRATIVE

244 Strategies, Tasks, and 2018-2020¹⁶ Budget Estimates (Years 1-2)

245 The ~~eight~~nine Strategies listed below are intended to be implemented
246 simultaneously under the 2016 Interlocal Agreement framework of the WRIA 1
247 Watershed Management Board. The Strategies are inextricably linked, and, in
248 many cases, tasks between Strategies are interdependent. While there is not a
249 stand-alone strategy for instream flow negotiations, implementing the
250 Strategies and tasks as outlined in this document will support resolution of
251 instream flows, habitat, and water quality issues in an integrated manner that
252 will lead to and could support negotiated water right agreements among the
253 affected parties and Lummi Nation and Nooksack Indian Tribes.

254 The approach for implementing each of the Strategies includes administrative
255 leads that are responsible for coordinating and overseeing the implementation
256 of tasks including developing scopes of work as needed, coordinating with task
257 leads, incorporating input from Planning Unit¹⁷, advisory committees and/or
258 public where and when applicable, and reporting back to the WRIA 1
259 Management Team and WRIA 1 Watershed Management Board.

260 **Strategy 1: WRIA 1 Watershed Management Board Work Plan Implementation**
261 **and Administration**

262 Description: Administer and implement Strategies 2-7-9 under the 2016
263 Interlocal Agreement framework of the WRIA 1 Watershed Management
264 Board.

265 Administrative Lead: Whatcom County Public Works

266 Work Products: WRIA 1 Watershed Management Board Annual Report
267 for work plan strategies including progress, actions completed, barriers to
268 implementation where applicable, and annual budget report that includes
269 funding obtained and funding gaps; WRIA 1 Management Team and WRIA 1
270 Watershed Management Board meeting agendas and meeting summaries;
271 Updated 2018-2023 WRIA 1 Watershed Management Board Work Plan,
272 Technical Appendices with detailed strategy scopes of work or detailed task
273 work plans where applicable; annual recommendations for adaptive
274 management of the 2018-2023 WRIA 1 Board Work Plan

275 **Total Strategy 1 ~~Estimated~~ Planning-Level Budget through 2020: \$136,000**

276 **Task 1: Manage and oversee the 2018-2023 WRIA 1 Watershed**
277 **Management Board Work Plan.** Each of the Strategies includes an

04-11-2019
Explanations of Changes
Lines 256-258 excluding
Footnote 17: 10/24/18
approval by Management
Team

06-29-2019
Explanations of Changes
Lines 246: blue font with
yellow highlight added in
response to Planning Unit
comments.
Footnote 17: The Planning
Unit has provided
comments regarding their
role as described in RCW
90.82. This footnote is
intended to be clear that if
updates to the WRIA 1
WMP occur under Strategy
5, they have a defined role
per 90.82.
Lines 262-263: blue font
with yellow highlight added
in response to Planning Unit
comments.
Lines 265-274: blue font
with yellow highlight added
in response to Planning Unit
comments.

¹⁶ Budget estimates after 2020 will be identified as part of developing a long-term funding strategy for priority actions.

¹⁷ The Planning Unit has a role in WRIA 1 Watershed Management Plan updates that may occur under Strategy 6: WRIA 1 Watershed Management Plan Update given their designated role described in RCW 90.82.

278
279
280
281
282
283
284
285
286
287
288
289
290
291
292
293
294
295
296
297
298
299
300
301
302
303
304
305
306
307
308
309
310
311
312
313
314
315
316
317
318

administrative lead that is responsible for coordinating, overseeing, and managing and reporting on the implementation of the strategy, which includes identifying and/or contracting with task leads as appropriate. Task 1 of this Strategy is to provide overall administration of the WRIA 1 Watershed Management Board and its work plan under a single administrator as approved by the WRIA 1 Watershed Management Board. Initially the administrator is the Administrative Lead's member of the WRIA 1 Management Team anticipated to be existing staff of a Board entity but and will be discussed and considered confirmed as part of the annual work plan and budget review. This task includes: The administration includes but is not limited to:

- Annually within the first quarter of the year prepare a schedule for WRIA 1 Management Team and WRIA 1 Watershed Management Board meetings, identify or confirm staff responsible for administering and coordinating the WRIA 1 Watershed Management Board work plan including Strategy 1, and coordinate with the administrative leads or their designee for Strategies 2-9 to identify and/or confirm annual milestones, timelines, and work products for each of the strategies. Opportunities for public input and/or comment will be coordinated with Strategy 1, Task 3. The outcomes of the annual coordination of milestones, timelines, and work products will be documented in an annual implementation schedule that is added as an Appendix to the 2018-2023 WRIA 1 Watershed Management Board Work Plan. Opportunities will be provided for public input on the annual schedule and milestones through Management Team meetings and updates to committees. The Management Team will approve the annual implementation schedule with milestones, timelines, and identified work products no later than March 31st of a given year.
- Identifying and addressing barriers to implementation as they arise and, as needed, frame and schedule for discussion, resolution, and/or direction to the WRIA 1 Management Team and WRIA 1 Watershed Management Board. Barriers identified and resolution of the barriers will be documented and incorporated into the WRIA 1 Board Work Plan annual report.
- Providing an annual review of the Work Plan and presenting its status to the WRIA 1 Management Team and WRIA 1 Watershed Management Board with recommendations for modifications, where applicable or desired.

06-29-2019
Explanations of Changes

Lines 278-279: blue font with yellow highlight added in response to Planning Unit comments.

Lines 284-289: blue font, black strike out, and yellow highlight added in response to Planning Unit comments.

06-29-2019
Explanations of Changes

Lines 290-308: This subtask is intended to address comments about increased detail on objectives, timelines and work products. Given the 5-year work plan is a strategic plan that is more general in nature with planning level budget estimates, a subtask that involves preparing an annual implementation schedule that encompasses all of the strategies is included. As strategies move forward, the level of detail will increase and will therefore be reflected in the annual implementation schedules. The annual objectives, timelines, and work products should help ensure that the 5-year work plan continues to move forward with the type of accountability and management that has also been a focus of discussion by the Management Team.

Lines 312-315: blue font with yellow highlight added in response to Planning Unit comments.

- 319 • Supporting WRIA 1 Watershed Management Board function and
- 320 operation including providing organizational support to the Local
- 321 Government Caucus, and upon request, the Co-Manager Caucus.

322 Task 2: **Program coordination** associated with the 2016 Interlocal

323 **Agreement** WRIA 1 framework including but not limited to

324 providing meeting support to implement Strategies under the 2018-

325 2023 WRIA 1 Watershed Management Board Work Plan. The task

326 also includes coordinating with complementary programs including

327 but not limited to Whatcom Clean Water Program, Watershed

328 Improvement Districts, and Whatcom County River and Flood

329 Division integrated floodplain planning that have a link to Strategies

330 in the WRIA 1 Watershed Management Board Work Plan. The

331 coordination with complementary programs will be documented

332 and incorporated into the annual review of the WRIA 1 Board Work

333 Plan

334 Task 3: **Organize, collaborate, and/or conduct outreach** associated with the

335 Strategies outlined in the 2018-2023 WRIA 1 Watershed

336 Management Board Work Plan. This includes:

- 337 • Maintain and update WRIA 1 website
- 338 • Develop integrated outreach strategy.
- 339 • Coordinate and collaborate with Whatcom Watersheds
- 340 Information Network to advance and disseminate WRIA 1
- 341 program information as appropriate including participating in
- 342 planning for speakers, conferences, forums, mailings, and other
- 343 events.
- 344 • Coordinating and collaborating with WRIA 1 Watershed
- 345 Management Board entities, LIO participants, and others as
- 346 appropriate to support outreach consistent with topics in the
- 347 *WRIA 1 Watershed Management Plan, WRIA 1 Salmonid*
- 348 *Recovery Plan, and draft Whatcom LIO Ecosystem Recovery Plan.*
- 349 • Implement outreach specific to the Strategies outlined in the
- 350 2018-2023 WRIA 1 Watershed Management Board Work Plan to
- 351 inform the community of program status, obtain feedback and
- 352 input, and to engage the community in implementation actions.
- 353 • Within the first quarter of the year, the actions outlined in the
- 354 above bullets will be reported on in the annual review and report
- 355 for the 2018-2023 WRIA 1 Board Work Plan.

356 **Strategy 2: Ground Water Model(s) and Technical Support.**

357 Description: A coupled groundwater/surface water model that primarily

358 covers the LENS study area was initiated as a multi-phase implementation

359 item in 2014 under the former WRIA 1 Watershed Joint Board. The

04-11-2019
Explanations of Changes

Lines 323-330 [excluding
"Agreement" in blue font
w/yellow highlight]:
10/24/18 approval by
Management Team

06-29-2019
Explanations of Changes

Lines 331-333: blue font
with yellow highlight
added in response to
Planning Unit comments.

Lines 353-355: blue font
with yellow highlight
added in response to
Planning Unit comments.

360 construction of the groundwater model, which is the final phase, will be
361 completed late 2018. The additional needs associated with the
362 groundwater model include receiving and operating the model, which are
363 reflected in the tasks outlined below, and expanding it to other areas of
364 WRIA 1 such as the South Fork Nooksack Watershed where a groundwater
365 model has been proposed by Nooksack Tribe in partnership with USGS.

04-11-2019
Explanations of Changes
Line 367: Added "Planning Level" for consistency with other text in document.

366 **Administrative Lead:** Whatcom County Public Works

367 **Total Strategy 2 Planning Level Budget through 2020:** \$85,000

368 **Work Products:** Operation of WRIA 1 groundwater model; Options for
369 expanding groundwater model; Technical Reports; Meeting
370 Summaries

06-29-2019
Explanations of Changes
Lines 366-372: blue font with yellow highlight added in response to Planning Unit comments.

371 Task 1: **Coordinate technical review of groundwater model** within the
372 WRIA 1 framework of the 2016 Interlocal Agreement and identify
373 additional groundwater monitoring needs for long term model
374 resolution, if any.

375 Timeline: December 2018-January 2019

376 Task 2: **Identify options and select preferred option** for managing the
377 coupled surface/groundwater model including operation of the
378 model and updating data sets as information becomes available
379 that will result in an increase in the resolution of the model output,
380 and after identifying how the model will be used and key
381 management questions for operating the model.

382 Timeline: August 2018-December 2018

383 Task 3: **Identify needs and long term funding** for managing the coupled
384 surface/groundwater model. Costs should include but is not limited
385 to staffing, updating data as needed, making information available
386 to the public and other entities, and calibrating the model when
387 appropriate.

388 Timeline: August 2018-January 2019

389 Task 4: **Implement recommendation** for managing the coupled model. This
390 task is dependent on Tasks 2 and 3 of this Strategy.

391 Timeline: Initiate implementation February 2019

392 Task 5: **Expand groundwater modeling to other areas of WRIA 1** starting
393 with the South Fork Nooksack Watershed model proposed by
394 Nooksack Tribe in partnership with USGS.

395 Timeline: 2019-2022

396 **Strategy 3: Regional¹⁸ (WRIA 1-Wide) Water Supply Plan**

397 Description: This Strategy was originally identified in the 2010 Lower
398 Nooksack Strategy but not implemented due to lack of funding support.
399 Nonetheless, there remains a need for a WRIA 1-wide water supply plan
400 that establishes a framework to address water supply needs beyond the
401 WADOH regulatory framework of the Whatcom County Coordinated Water
402 System Plan (CWSP) and that is consistent with the geographic extent of
403 proposed approaches to settle water rights. Under this Strategy, the
404 regional water supply plan will integrate the 2017 updated CWSP with other
405 out-of-stream and instream water needs, in context with land use,
406 economic viability, and ecosystem recovery. **Consider climate change**
407 **impacts on water quality and quantity as it relates to water supply.**

408 **Administrative Lead: PUD No. 1**

409 **Total Strategy 3 Planning Level Budget through 2020: \$225,000**

410 **Work Product: Meeting Notes or Summaries; Technical Memoranda; Draft**
411 **and Final Regional Water Supply Plan**

412 Task 1: **Coordinate with technical work groups and staff teams, and**
413 **Planning Unit** for drafting and providing feedback and review of
414 water supply plan components. Review of plan components will be
415 coordinated through the **WRIA 1 framework of the 2016 Interlocal**
416 **Agreement.**

417 Timeline: **2019-2020 2018-2020**

418 Task 2: **Consolidate and quantify water availability, water use, and water**
419 **supply needs for out of stream needs** (current and projected, **which**
420 **will consider climate change**) including evaluating water right data
421 base for opportunities. This task is anticipated to focus initially in
422 pilot areas for Strategy 4 (Drainage Based Management Planning).

423 Timeline: **2019-2020**

424 Task 3: **Compile existing information on instream water needs and**
425 **identify monitoring priorities** to incorporate in Strategy 7. This task
426 is anticipated to initially focus in pilot areas for Strategy 4 (Drainage
427 Based Management Planning).

428 Timeline: **2019-2020**

429 Task 4: **Identify and support water supply and management research,**
430 **facilitate data collection, and close data gaps.** This includes
431 identifying priority needs for monitoring effectiveness of water
432 supply management approaches and solutions. This task will be

04-11-2019
Explanations of Changes

Line 406-407: reference to climate change added based on Nooksack Tribe comments 2/21/19.

Line 409: Added "Planning Level" for consistency with other text in document.

Lines 412-413: Per February 20 Management Team meeting, removed reference to Planning Unit because lines 256-258 provide for receiving feedback and input from committees, public, and Planning Unit as applicable for each of the strategies. The exception noted is Strategy 6.

Lines 419-420: reference to climate change added based on Nooksack Tribe comments 2/21/19.

Lines 439-440: reference to climate change added based on Nooksack Tribe comments 2/21/19.

Task timelines added for consistency

06-29-2019
Explanations of Changes

Lines 408, Lines 410-411, Lines 415-416: blue font with yellow highlight added in response to Planning Unit comments.

Footnote 18: Added in response to Planning Unit comments.

¹⁸ Regional is defined as WRIA 1 within Whatcom County boundaries.

433 done in conjunction with Strategies 7 and 4, and related information
434 from the ESSB 6091 update (Strategy 6), as applicable.

435 | Timeline: 2019-2020 ~~December 2018~~

436 Task 5: **Identify, evaluate, and support solutions for meeting water supply**
437 **needs.** This will be a collaborative and coordinated approach with
438 other efforts evaluating solutions in/for related plans and studies
439 (e.g., Drought Plan, grants addressing water supply, **climate change**
440 **plans or studies**, etc.), and in conjunction with Strategies 4 and 6
441 Drainage Based Management Planning and WRIA 1 Watershed
442 Management Plan (ESSB 6091 update), respectively. Gaps in
443 solutions will be identified, where applicable.

444 | Timeline: 2019-2020

445 Task 6: **Provide water supply information for connecting water availability**
446 **(e.g., forestry and agriculture) to land use and habitat.** The
447 outcomes of Tasks 2-5 will be used to improve connections between
448 where water is available and existing land use. Information will be
449 coordinated with Strategies 4 through 6, and will be used to
450 integrate water supply needs into other planning efforts (e.g.,
451 Comprehensive Plans, Integrated Floodplain Planning, and other
452 watershed-scale plans).

453 | Timeline: 2020-2021

454 Task 7: **Draft and Final Regional (WRIA 1) Water Supply Plan** that
455 consolidates information from Tasks 2-6 into a WRIA 1 Water Supply
456 Plan that includes instream and out of stream water needs and
457 identifies ranges of solutions. Review and feedback on the draft
458 plan will be coordinated ~~with technical staff, work groups, WRIA 1~~
459 ~~Planning Unit, WRIA 1 Management Team, and other interested~~
460 ~~parties~~ **through the WRIA 1 framework of the 2016 Interlocal**
461 **Agreement** prior to a final plan. Partnerships with WWIN, WSU,
462 WCD and others will be used for sharing information and to support
463 outreach related to water supply planning.

464 | Timeline: 2020-2021

465 **Strategy 4: Drainage Based Management Planning**

466 Description: Drainage-based management planning (DBMP) is a
467 recommendation in the WRIA 1 Watershed Management Plan. The concept
468 is a planning approach scaled to the drainage level and that will consider
469 five elements – water quality, water supply, instream flow, fish habitat, and
470 accountability. Under this approach, targets for each of the elements will
471 be developed and agreed to among the affected parties. A pilot area will be
472 identified for implementing the DBMP approach. Based on effectiveness of

04-11-2019
Explanations of Changes
Line 446: Nooksack Tribe comments 2/21/19
Line 458-460 [except yellow highlight]: removed references for consistency and used same language as in Task 1, Lines 412 413.
Line 481: Added "Planning Level" for consistency with other text in document.

06-29-2019
Explanations of Changes
Lines 460-461: blue font with yellow highlight added in response to Planning Unit comments.

473 the approach in the pilot area, additional sub-basins will be identified to
474 continue the DBMP. This Strategy is inextricably linked to all of the
475 Strategies in this 2018-2023 work plan and is expected to involve identifying
476 and coordinating with a sub-lead for each sub-basin. The approach is similar
477 to an approach introduced and presented to stakeholders by Lummi Nation
478 and is envisioned as a mechanism to help facilitate the resolution of state
479 and federal/tribal water rights in WRIA 1 .

480 **Administrative Lead: Whatcom County Public Works**

481 **Total Strategy 4 Planning Level Budget through 2020: \$112,500**

482 **Work Products:** Meeting Summaries; Data synthesis and analysis technical
483 memo; subbasin goals for water supply, water quality, instream
484 flows, and habitat; Implementation Plan and Agreements for
485 Drainage-Scale Water Management

486 **Task 1: Select pilot sub-basin and establish planning team for drainage-**
487 **based management planning** in coordination with technical staff,
488 Planning Unit, and other affected parties. Subbasin selection should
489 take into consideration- among other factors- sub-basin level data
490 availability, efforts underway to address water quality, water use,
491 and habitat issues, and a mechanism in place at the sub-basin level
492 for purposes of coordinating this Strategy.

493 Timeline: September – December 2018

494 **Task 2: Coordinate synthesis and analysis of available data, identify data**
495 **gaps, collect data, establish sub-basin goals and identify**
496 **management Strategies and actions** for water supply, water
497 quality, instream flows, and habitat using information collected,
498 synthesized, and coordinated under Strategies 3 and 5-7. Actions
499 identified will include early implementation actions. To the extent
500 available, information generated should use the completed
501 groundwater model (Strategy 2).

502 Timeline:

503 **Task 3: Implement and monitor early actions** while the full implementation
504 schedule is developed, and the sub-basin goals and solutions are
505 finalized and approved as a sub-basin plan and appended to the
506 WRIA 1 Regional Water Supply Plan and WRIA 1 Watershed
507 Management Plan.

508 Timeline:

509 **Task 4: Draft and Ffinalize pilot sub-basin plan and agreements. Prepare a**
510 **draft and final sub-basin plan and implementation schedule.**
511 **Solicit input from the Planning Unit on the draft sub-basin plan prior**

06-29-2019

Explanations of Changes

Lines 480, Line 482: blue font with yellow highlight added in response to Planning Unit comments.

04-11-2019

Explanations of Changes

Line 488: Per February 20 Management Team meeting, removed reference to Planning Unit because lines 256-258 provide for receiving feedback and input from committees, public, and Planning Unit as applicable for each of the strategies. The exception noted is Strategy 6.

Line 509-510: 10/24/18 approval by Management Team

Line 511-513: Per February 20 Management Team meeting, removed reference to Planning Unit because lines 256-258 provide for receiving feedback and input from committees, public, and Planning Unit as applicable for each of the strategies. The exception noted is Strategy 6.

Lines 512-513: used same language as in Task 1, Lines 412-413.

Lines 519-520: Per February 20 Management Team meeting, removed reference to Planning Unit because lines 256-258 provide for receiving feedback and input from committees, public, and Planning Unit as applicable for each of the strategies. The exception noted is Strategy 6.

512 ~~to finalizing.~~ Review and feedback on the draft plan will be
513 coordinated through the WRIA 1 framework of the 2016 Interlocal
514 Agreement. The final sub-basin plan implementation schedule and
515 agreements will be appended to the WRIA 1 Water Supply Plan and
516 WRIA 1 Watershed Management Plan.

517 Timeline:

518 Task 5: Repeat Tasks 1-4 in other sub-basins, adaptively managing the
519 process or approach based on lessons learned from the pilots ~~and~~
520 ~~feedback received from the Planning Unit.~~

521 Timeline:

522 **Strategy 5: Salmon Recovery Plan Implementation**

523 Description: This Strategy reflects the function of the WRIA 1 Watershed
524 Management Board under the December 2016 Interlocal Agreement, which
525 is to facilitate implementation and adaptive management of the *WRIA 1*
526 *Salmonid Recovery Plan* and associated implementation documents, serve
527 as the Salmon Recovery Lead Entity for WRIA 1, coordinate participation in
528 Puget Sound salmon recovery efforts, and coordinate the development,
529 implementation and adaptive management of WRIA 1 watershed chapters
530 of recovery plans for ESA listed salmonids and other salmonid species as
531 warranted.

532 **Administrative Lead: Co-Managers**

533 **Total Strategy 5 Planning Level Budget through 2020: \$570,000**

534 **Work Products:** Annual Update of *WRIA 1 Salmonid Recovery Plan*
535 *Implementation Status*; *WRIA 1 Chinook Monitoring and Adaptive*
536 *Management Plan* update; *WRIA 1 Salmonid Recovery Plan* update;
537 annual grant round and associated habitat project list

538 Task 1: Update the *WRIA 1 Salmonid Recovery Plan* and implement
539 associated monitoring and adaptive management tasks. This
540 includes: (1) evaluating and updating status of trends of Chinook
541 and other populations, including steelhead and Bull Trout; (2)
542 evaluating and updating limiting factors and the broader technical
543 basis of the Plan, including development of a quantitative Nooksack
544 Chinook life cycle model that relates habitat condition to Chinook
545 population performance, as an alternative to the Ecosystem
546 Diagnosis and Treatment model; (3) reviewing status of salmon
547 recovery plan early actions; (4) working with co-managers on
548 hatchery needs and to review status of hatchery contributions to
549 stock recovery (e.g., South Fork Chinook Rescue Program); i.e.,
550 Skookum Hatchery Chinook captive brood program); (5)

06-29-2019
Explanations of Changes

Lines 513-514, Line 532:
blue font with yellow
highlight added in
response to Planning Unit
comments.

04-11-2019
Explanations of Changes

Line 533: Added "Planning
Level" for consistency with
other text in document.

Lines 469-472: 10/24/18
approval by Management
Team

06-05-2019
Explanations of Changes

Line 538-559: The track
changes in Task 1 are the
changes that were
anticipated from the City of
Bellingham (and reviewed
by the technical staff team
members from Lummi and
Nooksack Natural
Resources)

551 coordinating and implementing effectiveness monitoring;⁷ (6)
552 facilitating data review, collection and closing data gaps;⁷ (7)
553 expanding, updating, and refining restoration and protection
554 strategies for Nooksack early Chinook freshwater, estuarine, and
555 nearshore habitats; and (8) preparing an addendum or /update to
556 the 2005 WRIA 1 Salmonid Recovery Plan. If an update is needed,
557 the update is approved by the WRIA 1 Watershed Management
558 Board through the WRIA 1 structure. This task is strongly linked to
559 Strategy 7.

560 Timeline: July 2018-2021

561 Task 2: **Coordinate, support and implement** salmon recovery actions in
562 WRIA 1. This includes coordinating implementation of Chinook
563 restoration and protection projects in priority geographic areas
564 identified in the Salmon Recovery Program restoration Strategies
565 and the regionally required 4 year project list, supporting
566 implementation of restoration and protection projects in the lower
567 Mainstem tributaries and coastal streams and nearshore and
568 estuarine areas, coordinating and supporting WRIA 1-wide fish
569 passage prioritization and implementation, and coordinating and
570 supporting other priority salmon recovery actions, as well as
571 addressing barriers to implementation.

572 Timeline: July 2018-June2020

573 Task 3: Coordinate, support, and implement WRIA 1 Salmon Recovery
574 Program including coordinating completion of grant deliverables
575 associated with the salmon recovery lead entity operating grant
576 such as preparing/updating 4 year project list, updating projects in
577 the Washington State Habitat Work Schedule, coordinating Salmon
578 Recovery Funding Board (SRFB) and Puget Sound Acquisition and
579 Restoration (PSAR) annual grant processes. Additional coordination
580 under this task includes outreach associated with the WRIA 1
581 Salmon Recovery Program. This task also includes technical staff
582 support related to salmon and habitat information needs for
583 Strategies 2-4 and 6-8.

584 Timeline:

585 **Strategy 6: WRIA 1 Watershed Management Plan Update**

586 Description: This Strategy reflects the function of the WRIA 1 Watershed
587 Management Board under the December 2016 Interlocal Agreement, which
588 is to facilitate implementation and adaptive management of the *WRIA 1*
589 *Watershed Management Plan- Phase 1.*

590 **Total Strategy 6 Budget through 2020: \$208,500**

591 **Work Product:** ~~Streamflow Restoration Act (ESSB 6091) Update of the WRIA~~
592 ~~1 Watershed Management Plan-Phase 1- Updates to the WRIA 1~~
593 ~~Watershed Management Plan~~

594 **Task 1:** ~~Update the WRIA 1 Watershed Management Plan-Phase 1 to~~
595 ~~address the 2018 Streamflow Restoration Act (ESSB 6091) The~~
596 ~~update will be prepared and approved in accordance with the~~
597 ~~approved process for Developing and Approving Streamflow~~
598 ~~Restoration Act (ESSB 6091) Update of WRIA 1 Watershed~~
599 ~~Management Plan-diagram. Any updates to the WRIA 1 Watershed~~
600 ~~Management Plan- Phase 1 will be done in conjunction with the~~
601 ~~WRIA 1 Planning Unit.~~

602 Timeline: February 2019

603 **Task 2:** ~~Adaptively manage updates to the WRIA 1 Watershed Management~~
604 ~~Plan-Phase 1 as applicable and/or as recommended or identified in~~
605 ~~the 2018 Streamflow Restoration Action Act (ESSB 6091) update to~~
606 ~~the WRIA 1 Watershed Management Plan-Phase 1 in conjunction~~
607 ~~with the Planning Unit-~~

608 **Task 3:** ~~Engage with the Department of Ecology on the Stream Restoration~~
609 ~~Act as the 6091 process moves forward.~~

610 **Strategy 7: Develop and Implement a WRIA 1 Integrated Monitoring Program**
611 **with Centralized Data Management.**

612 Description: The WRIA 1 Watershed Management Plan includes a draft
613 WRIA 1 Long Term Monitoring Plan (LTMP) that has not been fully
614 implemented. Further, salmon recovery monitoring needs were not
615 included because they were still in development. The Nooksack Chinook
616 Monitoring and Adaptive Management framework was developed in 2014
617 and 2015 and needs to be integrated into the LTMP. The original intent of
618 the WRIA 1 LTMP was to have a comprehensive monitoring approach with a
619 central location for data management. This Strategy is to update and
620 implement the WRIA 1 LTMP in a manner that integrates priority monitoring
621 elements of WRIA 1 programs, with quality assurance/quality control to
622 ensure data quality and centralized data storage so that it is easily
623 accessible to all entities.

624 **Administrative Lead:** PUD No. 1

625 **Total Strategy 1 Planning Level Budget through 2020: \$877,220**

626 **Work Products:** Updated Draft and Final WRIA 1 Long Term Monitoring Plan
627 Update; Centralized Data Management; Funding Strategy;
628 Cooperative Monitoring Agreements

04-11-2019
Explanations of Changes
Line 585: Nooksack Tribe 2/21/19 comment is that one of the first tasks for Strategy 6 should be to review the 2005 WMP and identify sections that need to be updated, expanded, and added
Lines 591-609: Changes made based on the January 3, 2019 Management Team discussion to remove the reference to ESSB 6091 and add a task for engaging with Ecology moving forward.
Lines 606-607: 2/21/19 Nooksack Tribe comment is if there is an explicit relationship with the Planning Unit, there needs to be an explicit definition of what "in conjunction with" means and reference the WRIA 1 organization chart in the 2016 ILA.

06-29-2019
Explanations of Changes
Lines 624, Lines 626-627: blue font with yellow highlight added in response to Planning Unit comments.

- 629 Task1: **Coordinate with WRIA 1 Staff Teams** and entities involved in
630 monitoring to identify and update monitoring needs across WRIA 1
631 programs including water quality, water quantity including instream
632 flow and water use, habitat, land use, and program and project
633 effectiveness. Identification of monitoring needs should
634 incorporate broad scoping of indicators, data products, protocols,
635 **QAPPs**, and analysis steps. Coordinate Staff Teams through Tasks 2-
636 4 for purposes of completing an update to the 2007 version of the
637 WRIA 1 Long Term Monitoring Program.
- 638 Timeline: September 2018 - February 2019
- 639 Task 2: **Identify key management questions and establish priorities for**
640 **WRIA 1 Integrated Monitoring Program** based on review and
641 discussion of the updated monitoring needs and in consideration of
642 Strategies 2-6.
- 643 Timeline: September – December 2018
- 644 Task 3: **Identify options for and implement a preferred option for a**
645 **centralized data management approach** that provides an easily
646 accessible data storage mechanism so entities working on plans,
647 tools, and/or management solutions know what data exists and
648 have direct access to it. Implementing a centralized data
649 management approach will also include identifying options and
650 selecting a preferred option for long-term management of data.
651 Solicit feedback from groups, entities, Planning Unit, and others that
652 are—likely users of the data management system prior to
653 recommending a preferred option. The preferred option will be
654 presented to the WRIA 1 Watershed Management Board for
655 approval to implement.
- 656 Timeline: September 2018 – December 2020
- 657 Task 4: **Identify funding needs for long-term integrated monitoring and**
658 **data management.** This task needs to be done in conjunction with
659 other Strategies requiring long-term funding.
- 660 Timeline: August 2018 – March 2019
- 661 Task 5: **Prepare an update to the WRIA 1 Long Term Monitoring Plan that**
662 **incorporates** with outcomes of Tasks 1-4. The updated plan will
663 include implementation schedule and process for integrating
664 outcomes into adaptive management or WRIA 1 programs and
665 plans. The process for incorporating the update into the WRIA 1
666 Watershed Management Plan will occur as part of Strategy 6: WRIA
667 1 Watershed Management Plan Update.

04-11-2019
Explanations of Changes

Line 625: Added “Planning Level” for consistency with other text in document.

Line 635: reference to QAPPs added per 2/21/19 Nooksack Tribe comments.

Lines 651-653: Per February 20 Management Team meeting, removed reference to Planning Unit because lines 256-258 provide for receiving feedback and input from committees, public, and Planning Unit as applicable for each of the strategies

06-29-2019
Explanations of Changes

Lines 661-667: blue font with yellow highlight added in response to Planning Unit comments.

668 Timeline: April 2019

669 Task 6: **Cooperative Monitoring Agreements.** Facilitate and enter into
670 agreements with leads for monitoring elements and protocols
671 identified.

672 Timeline: August 2018– December 2019

673 **Strategy 8: Whatcom Local Integrating Organization Coordination and**
674 **Adaptive Management**

675 Description: This strategy reflects the WRIA 1 Watershed Management
676 Board function under the December 2016 Interlocal Agreement to
677 coordinate planning, implementation, monitoring and adaptive
678 management of ecosystem recovery actions, and to function as the Local
679 Integrating Organization and a partner in the Puget Sound Partnership in
680 representing WRIA 1 goals and priorities.

681 Administrative Lead: Whatcom County Public Works

682 **Total Strategy 8 Planning Level Budget through 2020: \$\$205,000**

683 **Work Products:** Update Whatcom LIO Ecosystem Recovery Plan to reflect
684 outcomes, priorities, and other actions associated with
685 implementing Strategies 1-7; grant deliverables associated with
686 coordinating Whatcom LIO

687 Task 1: **Coordinate and support functions of the Whatcom Local**
688 **Integrating Organization** including tasks and deliverables associated
689 with the scope of work that is developed in association with the
690 annual coordination grant administered by the Puget Sound
691 Partnership.

692 Timeline: August 2018-August 2020

693 Task 2: **Update and adaptively manage the *Whatcom LIO Ecosystem***
694 ***Recovery Plan*** to reflect the local priorities and actions identified
695 through Strategies 1-7.

696 Timeline: August 2018-August 2020

697 Strategy 9: Hatcheries

698 Description: Salmon Co-Managers (Lummi Nation, Nooksack Indian Tribe,
699 and Washington Department of Fish and Wildlife) develop a strategy for
700 hatcheries.

701 Timeline: December 2019

702

06-12-2019
Explanations of Changes

Line 681-682, Line 692,
Line 696: additions for
consistency with other
sections and timelines.

Lines 697-701 is additional
strategy requested by the
Lummi Nation to develop a
co-manager strategy for
hatcheries.