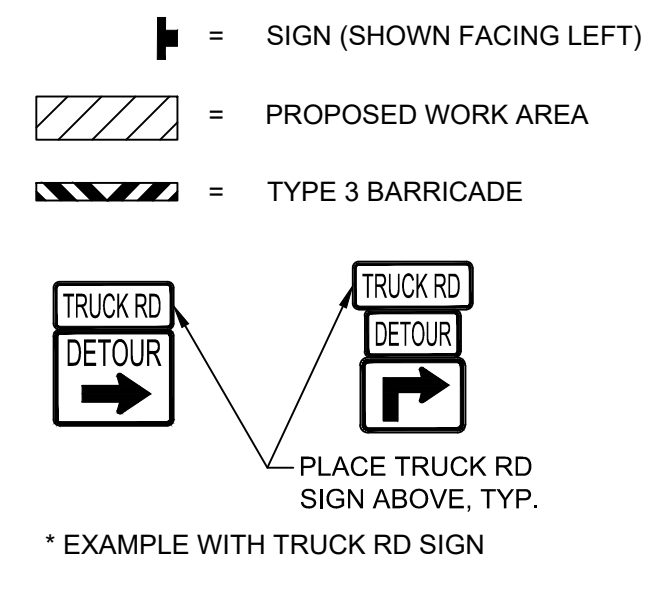
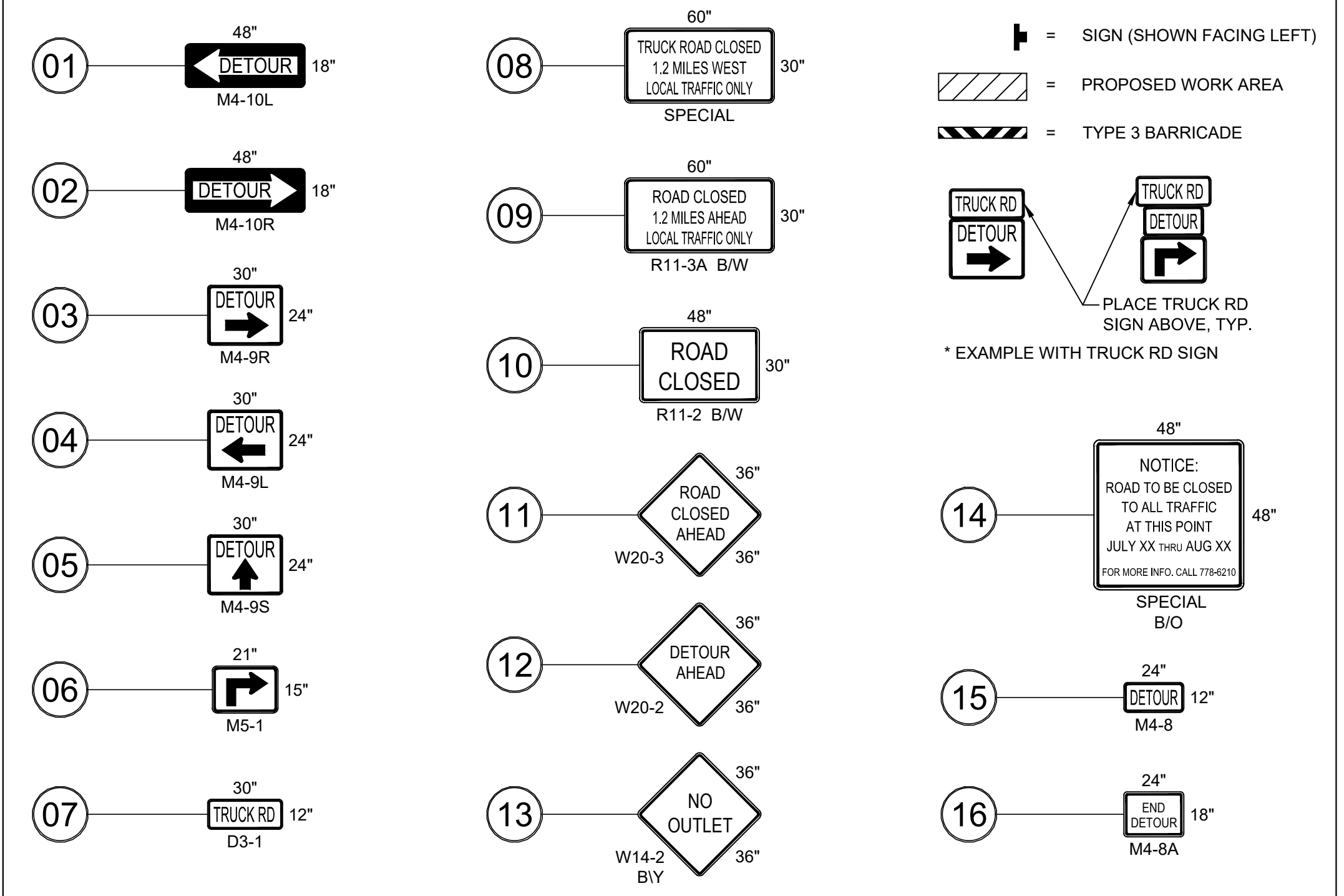


LEGEND



SIGN SPACING = X (1)

RURAL ROADS	45/55 MPH	500±
URBAN ARTERIALS & RURAL ROADS	35/40 MPH	350±
RURAL ROADS, URBAN ARTERIALS, RESIDENTIAL & BUSINESS DISTRICTS	25/30 MPH	200± (2)
URBAN STREETS	25 MPH OR LESS	100± (2)

(1) ALL SPACING MAY BE ADJUSTED TO ACCOMMODATE AT-GRADE INTERSECTIONS AND DRIVEWAYS.  
 (2) THIS SIGN SPACING MAY BE REDUCED IN URBAN AREAS TO FIT ROADWAY CONDITIONS.

NOTES:

1. TRAFFIC CONTROL PROCEDURES AND DEVICES SHALL CONFORM TO THE CURRENT EDITION OF THE 'MANUAL ON UNIFORM TRAFFIC CONTROL DEVICES FOR STREETS AND HIGHWAYS' (MUTCD) PUBLISHED BY THE FEDERAL HIGHWAY ADMINISTRATION, REVISIONS AND MODIFICATIONS TO THE MUTCD PER WAC TITLE 468 CHAPTER 468-95, AND 2020 WSDOT STANDARD SPEC. 1-10 TEMP. TRAFFIC CONTROL.
2. ALL SIGNS ARE BLACK ON ORANGE UNLESS OTHERWISE NOTED.
3. ALL SIGNS SHALL BE CLASS A OR MOUNTED TO TYPE 3 BARRICADE.
4. ALL CLASS-A SIGNING LOCATIONS SHALL BE MARKED FOR APPROVAL BY THE ENGINEER PRIOR TO PLACEMENT.
5. ALL SIGN PLACEMENTS SHALL BE POST-MOUNTED IN ACCORDANCE WITH MUTCD STANDARDS.
6. EACH TYPE 3 BARRICADE SHALL BE FITTED W/ (2) TYPE A FLASHING LOW-INTENSITY WARNING LIGHTS PER SECTION 1-10.3(3) OF THE STD. SPECIFICATIONS.
7. MULTIPLE BARRICADES MAY BE REQUIRED TO COMPLETELY BLOCK THE ENTIRE WIDTH OF THE ROADWAY.
8. SPECIAL NOTICE SIGN 14 SHALL BE INSTALLED WITH FLAGS SEVEN DAYS PRIOR TO THE START OF ANY WORK ON THE PROJECT. COORDINATE WITH THE ENGINEER TO DETERMINE THE DATES PRIOR TO MANUFACTURING THE SIGN. REMOVE FOLLOWING CLOSURE OF TRUCK ROAD.
9. ALL SIGNS ON WSDOT RIGHT OF WAY SHALL BE POST MOUNTED.



No.	SHEET REVISION	DATE	BY
1			
2			
3			
4			

PLAN SET ISSUE	DATE

DESIGN	DRAWN	CHECK
	BJF	CES

DRAWING SCALE: NTS  
 HORZ. DATUM: NAD 83/91  
 VERT. DATUM: NAVD 88

CONTRACT DATE: 2024  
 PROJECT NO: WO#720008  
 ROAD/BRIDGE No: TRUCK ROAD  
 DRAWING FILE:

PUBLIC WORKS DIRECTOR: ELIZABETH KOSA  
 COUNTY FLOOD ENGINEER: PAULA J. HARRIS, P.E.  
 PROJECT ENGINEER: CHRISTINA SCHOENFELDER



**WHATCOM COUNTY**  
 DEPARTMENT OF PUBLIC WORKS  
 322 N. COMMERCIAL ST., SUITE 120 BELLINGHAM, WA 98225  
 (360) 778-6230

PROJECT:	TRUCK ROAD BANK STABILIZATION PHASE 2
	PRJ# 720008
TITLE:	DETOUR PLAN