

PLACE SEVEN DAYS IN ADVANCE AT SOUTH LOCATION

PCMS 1 MESSAGE 1	
PHASE 1	PHASE 2
SR 539 WILL BE DETOURED	DATE THRU DATE
2.0 SEC	2.0 SEC

PLACE DURING DETOUR. MAY BE REMOVED AFTER FOURTEEN DAYS AT ENGINEER'S DISCRETION

PCMS 1 MESSAGE 2	
PHASE 1	PHASE 2
SR 539 CLOSED AHEAD	FOLLOW DETOUR
2.0 SEC	2.0 SEC

PLACE DURING DETOUR. MAY BE REMOVED AFTER FOURTEEN DAYS AT ENGINEER'S DISCRETION

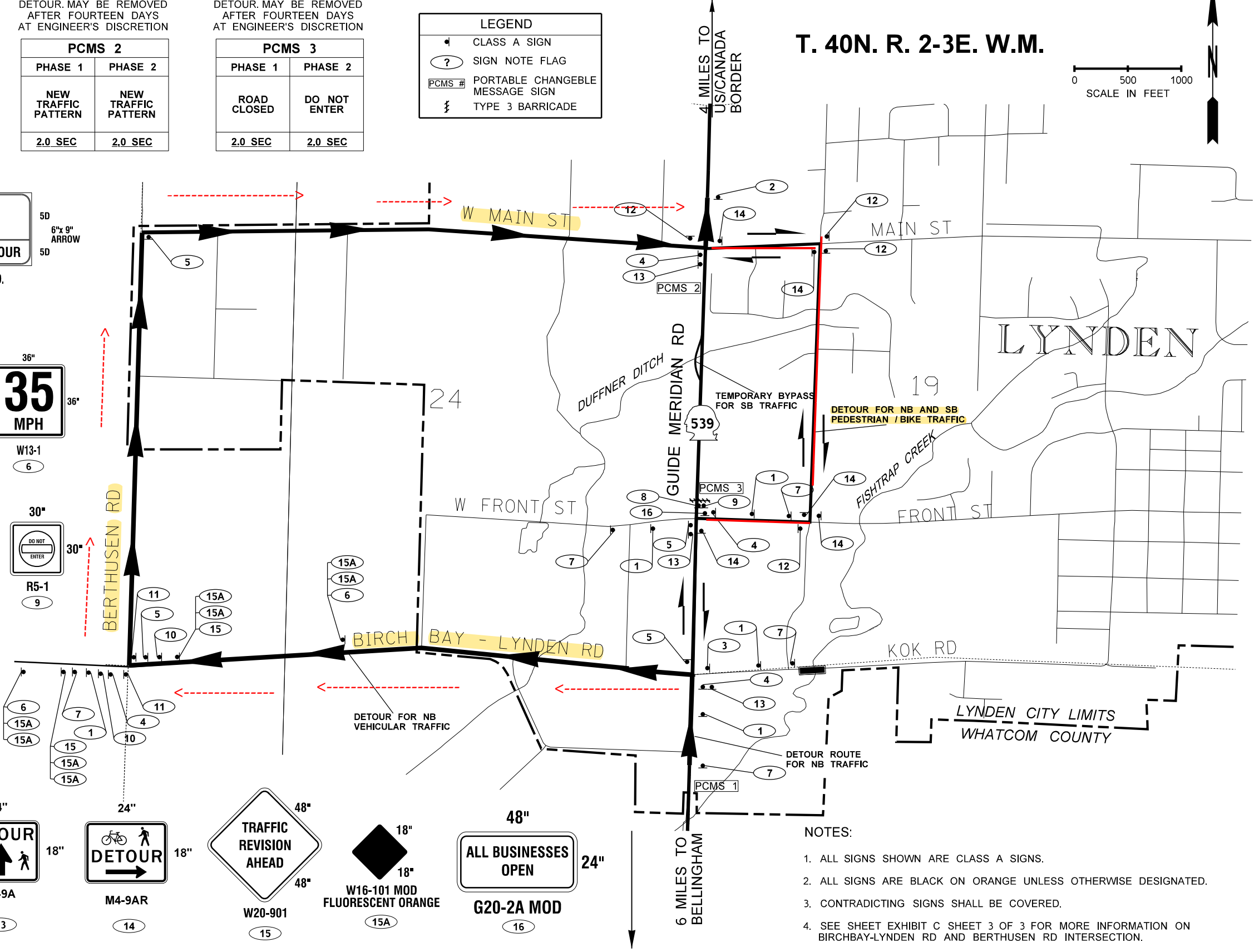
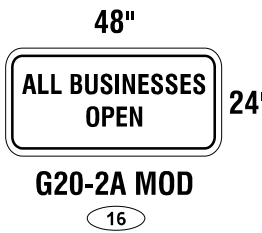
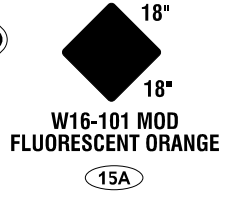
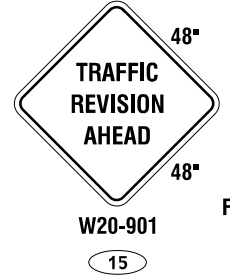
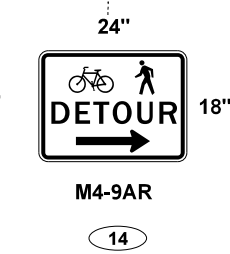
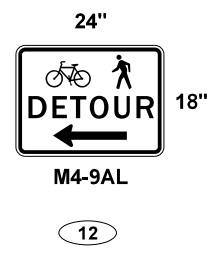
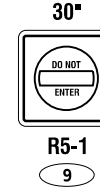
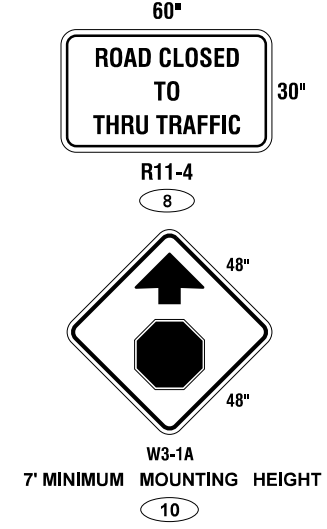
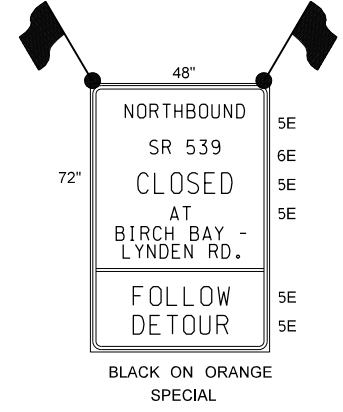
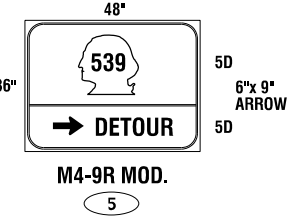
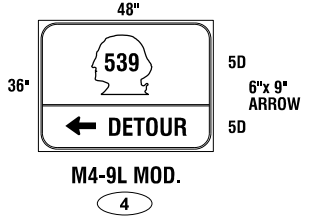
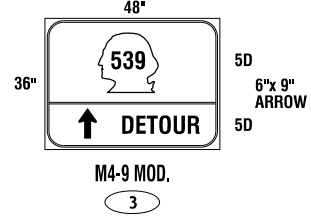
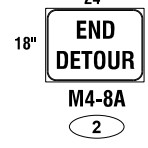
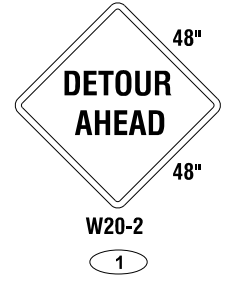
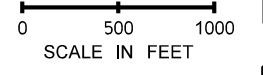
PCMS 2	
PHASE 1	PHASE 2
NEW TRAFFIC PATTERN	NEW TRAFFIC PATTERN
2.0 SEC	2.0 SEC

PLACE DURING DETOUR. MAY BE REMOVED AFTER FOURTEEN DAYS AT ENGINEER'S DISCRETION

PCMS 3	
PHASE 1	PHASE 2
ROAD CLOSED	DO NOT ENTER
2.0 SEC	2.0 SEC

LEGEND	
▲	CLASS A SIGN
⊙ ?	SIGN NOTE FLAG
PCMS #	PORTABLE CHANGEABLE MESSAGE SIGN
⚡	TYPE 3 BARRICADE

T. 40N. R. 2-3E. W.M.



- NOTES:
1. ALL SIGNS SHOWN ARE CLASS A SIGNS.
 2. ALL SIGNS ARE BLACK ON ORANGE UNLESS OTHERWISE DESIGNATED.
 3. CONTRADICTING SIGNS SHALL BE COVERED.
 4. SEE SHEET EXHIBIT C SHEET 3 OF 3 FOR MORE INFORMATION ON BIRCHBAY-LYNDEN RD AND BERTHUSEEN RD INTERSECTION.

c:\users\nguyea\pwwsdot\0460233\XL6478_480_PS_DU.dgn

FILE NAME	XL6478_480_PS_DU.dgn	REGION NO.	10	STATE	WASH	FED. AID PROJ. NO.	
TIME	11:33:13 AM	JOB NUMBER	22A040				
DATE	12/20/2022	CONTRACT NO.		LOCATION NO.			
PLOTTED BY	nguyea						
DESIGNED BY	A. NGUYEN						
ENTERED BY	A. NGUYEN						
CHECKED BY	S. TRAX						
PROJ. ENGR.	M. AMBLER						
REGIONAL ADM.	B. NIELSEN	REVISION	DATE	BY			



DATE		DATE	
P.E. STAMP BOX - SEE SHEET CT1 FOR SIGNATURE		P.E. STAMP BOX - SEE SHEET CT1 FOR SIGNATURE	

EXHIBIT B
DETOUR PLAN

Exhibit B - Detour Plan
Sheet 1 of 1

PLAN REF NO	
SHEET	1
OF	1
SHEETS	