

Justice Facility & Behavioral Health Treatment Center

Project Updates

JUNE 12, 2025



Justice Facility & Behavioral Health Treatment Center

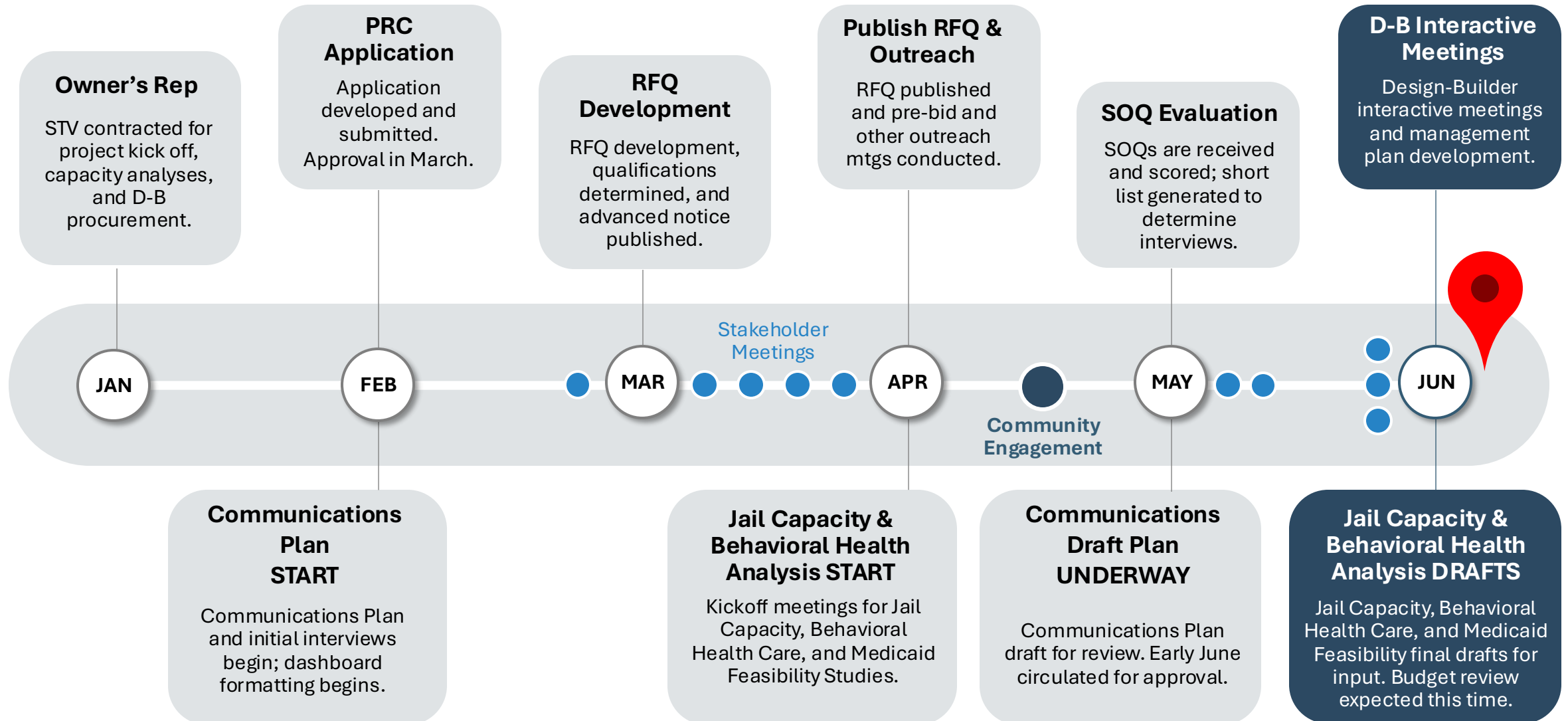
5. Project and Procurement Updates





Justice Facility & Behavioral Health Treatment Center

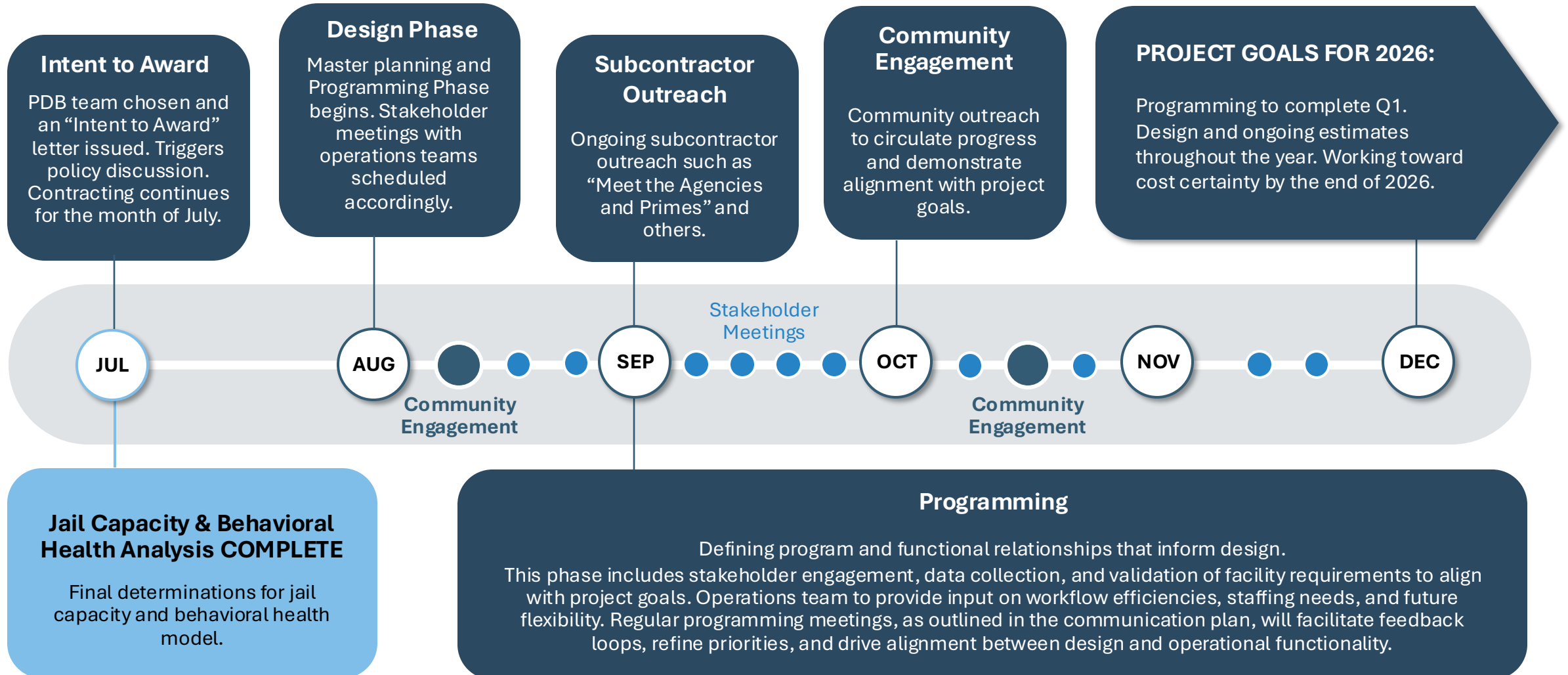
2025 Timeline – Q1&Q2





Justice Facility & Behavioral Health Treatment Center

2025 Timeline – Q3&Q4



Justice Facility & Behavioral Health Treatment Center

6. Wetlands Mitigation



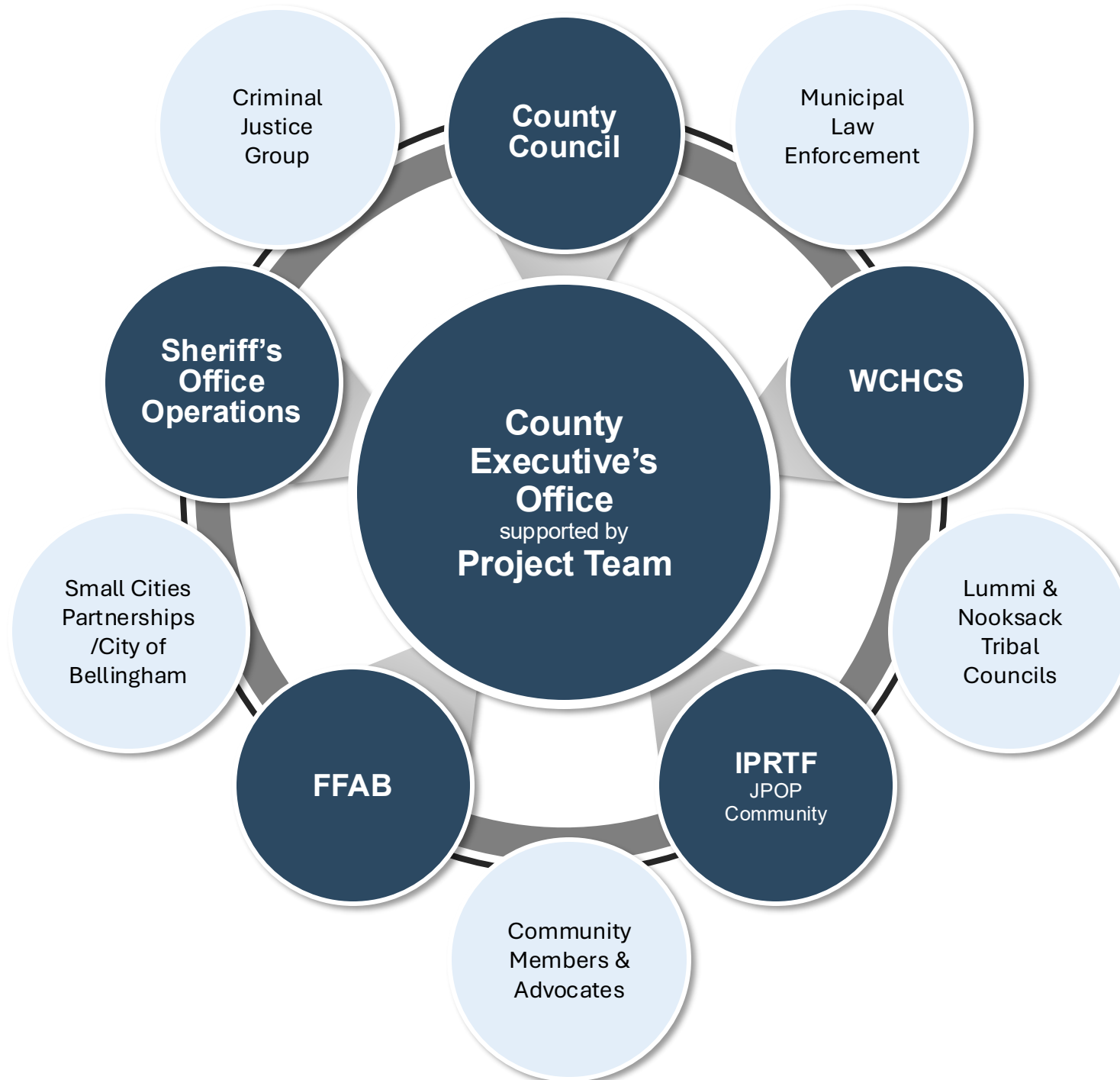
Justice Facility & Behavioral Health Treatment Center

7. Communications Plan



Justice Facility & Behavioral Health Treatment Center

Communications Plan Timeline



WEEKLY:

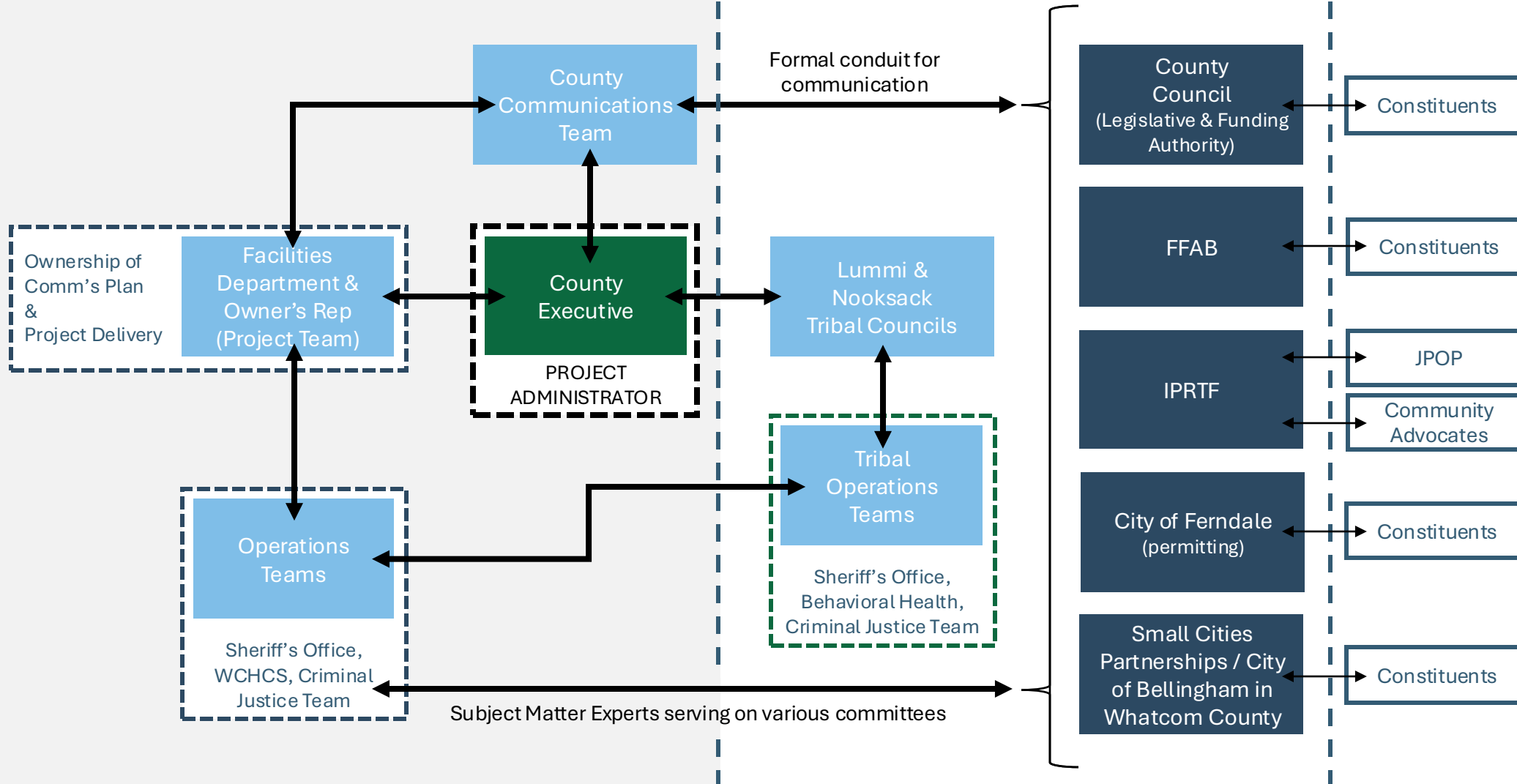
1-Pager briefings, memos, minutes, and risk register

MONTHLY:

2-page reports, peer-to-peer briefings,

QUARTERLY & MILESTONES:

2-page reports, web postings, civic organization presentations as requested





Justice Facility & Behavioral Health Treatment Center

Communications Plan Timeline

- April 30 Draft of Communications Plan Framework (CPF) submitted to Executive for review
- May 02 Comments from Executive coordinated into draft CPF
- May 05 Advanced review of CPF provided to FFAB
- May 08 FFAB meeting agenda item to review, discuss, and gain input on CPF
- May 15 Deadline for all stakeholder comments returned to STV (1 week)
- May 26 Draft Communications Plan (CP) submitted to Executive for review and comment
- June 05 Advanced review of draft CP by FFAB
- **June 12 FFAB meeting to review/approve CP**
- **June 16 Final draft CP sent to Council for advanced review**
- June 24 Council meeting for final review/approval CP



Justice Facility & Behavioral Health Treatment Center

Comments and Questions

Ashley McClaran, STV

Community Engagement Lead

Ashley.McClaran@stvinc.com

206-900-1483

Justice Facility & Behavioral Health Treatment Center

8. Jail Capacity Needs Analysis





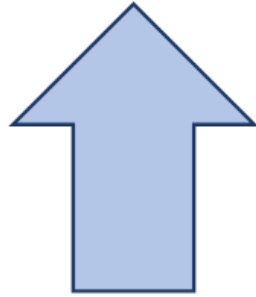
Projecting Rated Bed Needs – YEAR 2050

PRELIMINARY FINDINGS

Rated bed capacity needs are developed on an analysis of four data types:



County
Population
Trends



Admissions
to the
County Jail



Average
Daily
Population
(ADP)




Average
Length of
Stay (ALOS)

Whatcom County Washington



Projecting Rated Bed Needs – YEAR 2050

PRELIMINARY FINDINGS

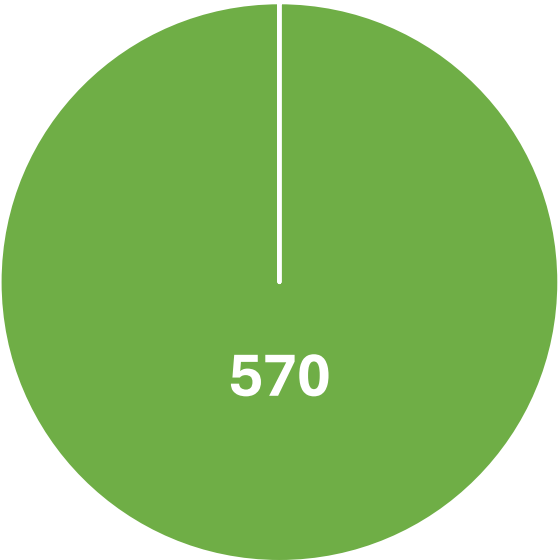


National Institute of Corrections
U. S. Department of Justice

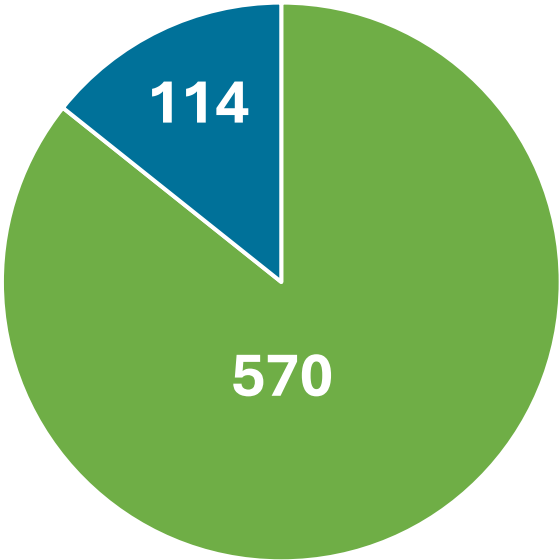
Objective Jail
Classification Systems:
A Guide for Jail
Administrators

80% rule: Difficult to
classify and to
separate prey from
predator in
overcrowded jails.

Safety and Security
of Inmates and Staff



570
RATED BEDS
Meets rated bed
projections without any
classification
recommendations



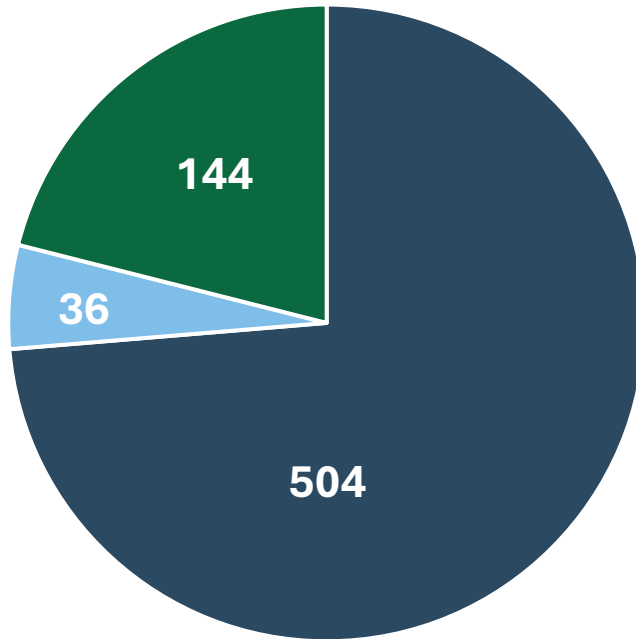
684
RATED BEDS
Meets Year 2050 ADP
projections with +/-
20% classification



Projecting Rated Bed Needs – YEAR 2050

PRELIMINARY FINDINGS

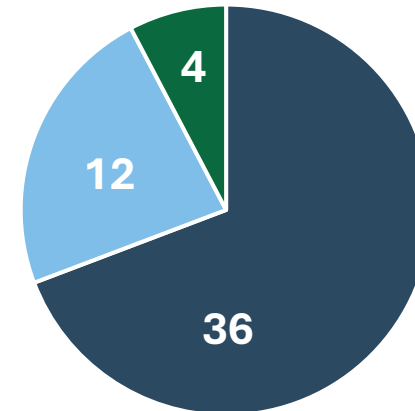
**RATED BEDS
by Population**



General Population: 504
Orientation (48-hour beds): 36
Specialized Housing: 144

684

**NON-RATED BEDS*
by Population**



Detox: 4 Group Areas
Padded: 12
Intake and Holding: 36

* Non-Rated Beds: Are not all considered “beds” and do not count toward the number of total rated beds.



Projecting Rated Bed Needs – YEAR 2050

PRELIMINARY FINDINGS

Various Types of Housing Units for Inmates



- Gender Responsive Design
- Classification (also consider prey and predator)
- Special Housing Needs
 - i. Medical
 - ii. Addictions
 - iii. Mental Health
 - iv. Behavioral Management
 - v. Veteran
 - vi. Trauma
 - vii. Transgender
 - viii. High Profile
 - ix. Others
- Court Status (sentenced versus pre-sentenced)