

ADELSTEIN, SHARPE & SERKA LLP
ATTORNEYS AT LAW

STEVEN P. ADELSTEIN
PHILIP E. SHARPE, JR.
PHILIP A. SERKA
JEFFREY P. FAIRCHILD
MITCHELL G. FABER
IVAN M. STONER
IAN McCURDY
JAMES T. HULBERT
PATRICK E. BYRNES

June 25, 2020

Mr. Barry Buchanan, Chair
Whatcom County Council
311 Grand Avenue, Suite 105
Bellingham, WA 98225

Re: Application for Franchise Renewal for Trans Mountain Oil Pipeline

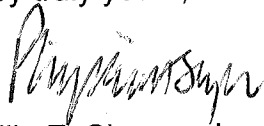
Dear Chairman Buchanan:

This law firm represents Trans Mountain Pipeline (Puget Sound) LLC ("Trans Mountain") which owns and operates the Trans Mountain oil pipeline. As you know, the pipeline has been in operation since the 1950's and serves refineries in Ferndale and Anacortes. Trans Mountain is a common carrier engaged in interstate commerce and as such, is governed by rules and regulations promulgated by the United States Department of Transportation and the Federal Energy Regulatory Commission.

Trans Mountain's pipeline crosses through a number of jurisdictions including Whatcom County. Its franchise agreement with Whatcom County is for a term of 25 years. It was renewed in June of 1996 and is scheduled to expire in June of 2021. Accordingly, it is submitting herewith the required application for renewal together with the filing fee. My client would appreciate it if you would be kind enough to refer this matter to the appropriate department and have one of its representatives contact me to discuss the renewal process and any information which may be required.

Thank you for your attention to this matter. If there are questions or comments, please don't hesitate to contact me.

Very truly yours,



Philip E. Sharpe, Jr.

PES:kms
Enclosures
cc: client

\\ADELSTEINPROLAWProLawFiles\Documents\3616-010\Trans Mountain Pipeline (Puget Sound) LLC (010)\Correspondence\351942.docx

APPLICATION FOR FRANCHISE

TO THE WHATCOM COUNTY COUNCIL:

COMES NOW, Trans Mountain Pipeline (Puget Sound) LLC

who respectfully petitions the Whatcom County Council for a twenty-five (25) year franchise to lay, construct, maintain, and repair
Oil pipeline

and all necessary appurtenances along, over, and across the following roads situated in Whatcom County, Washington:

All County roads, public ways and county property through which the pipeline currently runs.

The petitioner further requests that the Whatcom County Council fix a time and place for a public hearing on the granting of this continuation of franchise, and that public notice be given, at the expense of the petitioner, as provided by law; and that, at said hearing, petitioner be granted the franchise continuation herein requested.

DATED: June 1, 2020

Trans Mountain Pipeline (Puget Sound) LLC

Company Name

7815 Shellmont Street

Mailing Address

Burnaby, BC, Canada V5A 4S9

City

State Zip

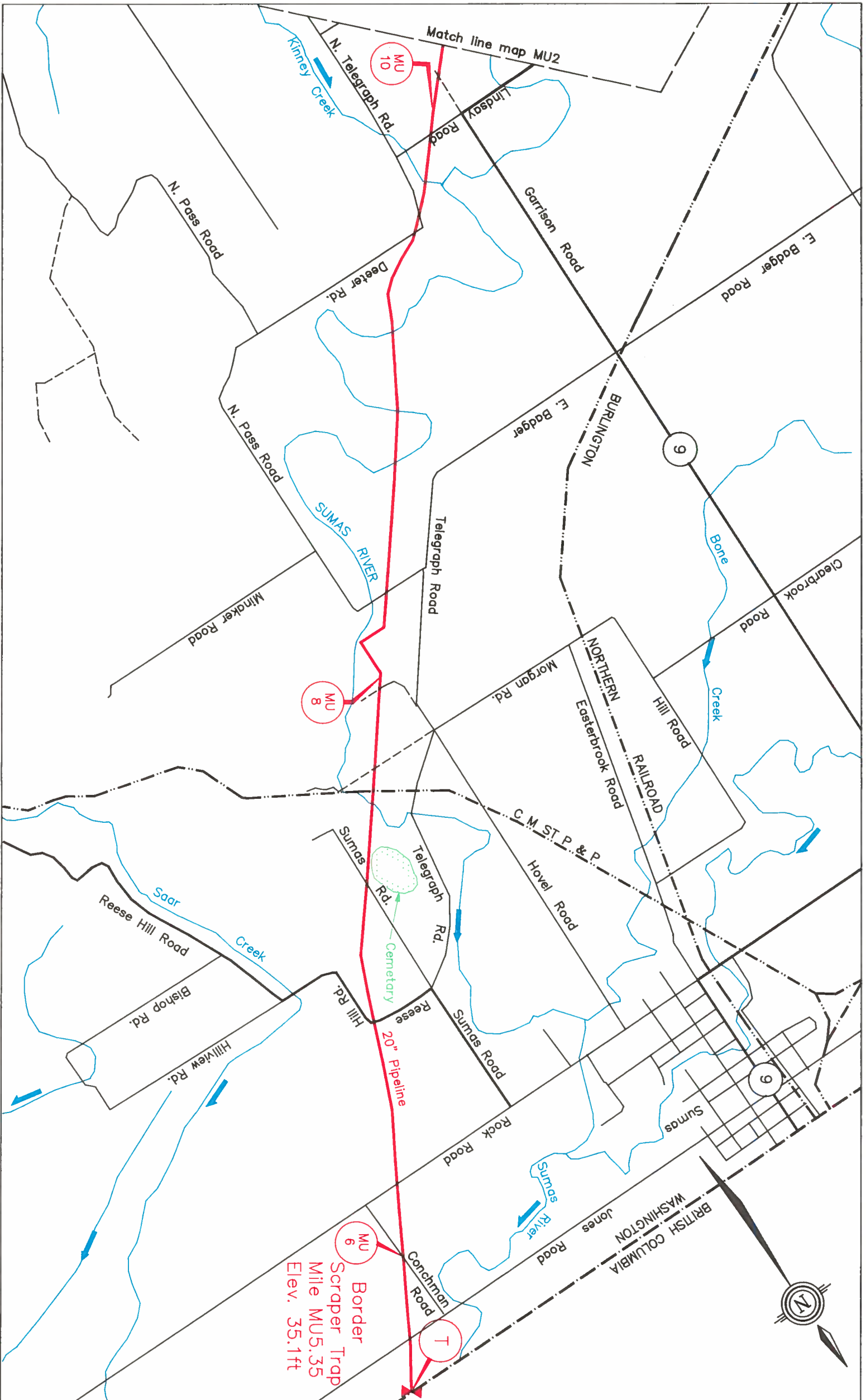
(604) 992-1955

Phone Number


Signature of authorized agent/owner

Alain Parise, Director- Land

Print or type name



TRANS MOUNTAIN

DECEMBER 1994

Scale :

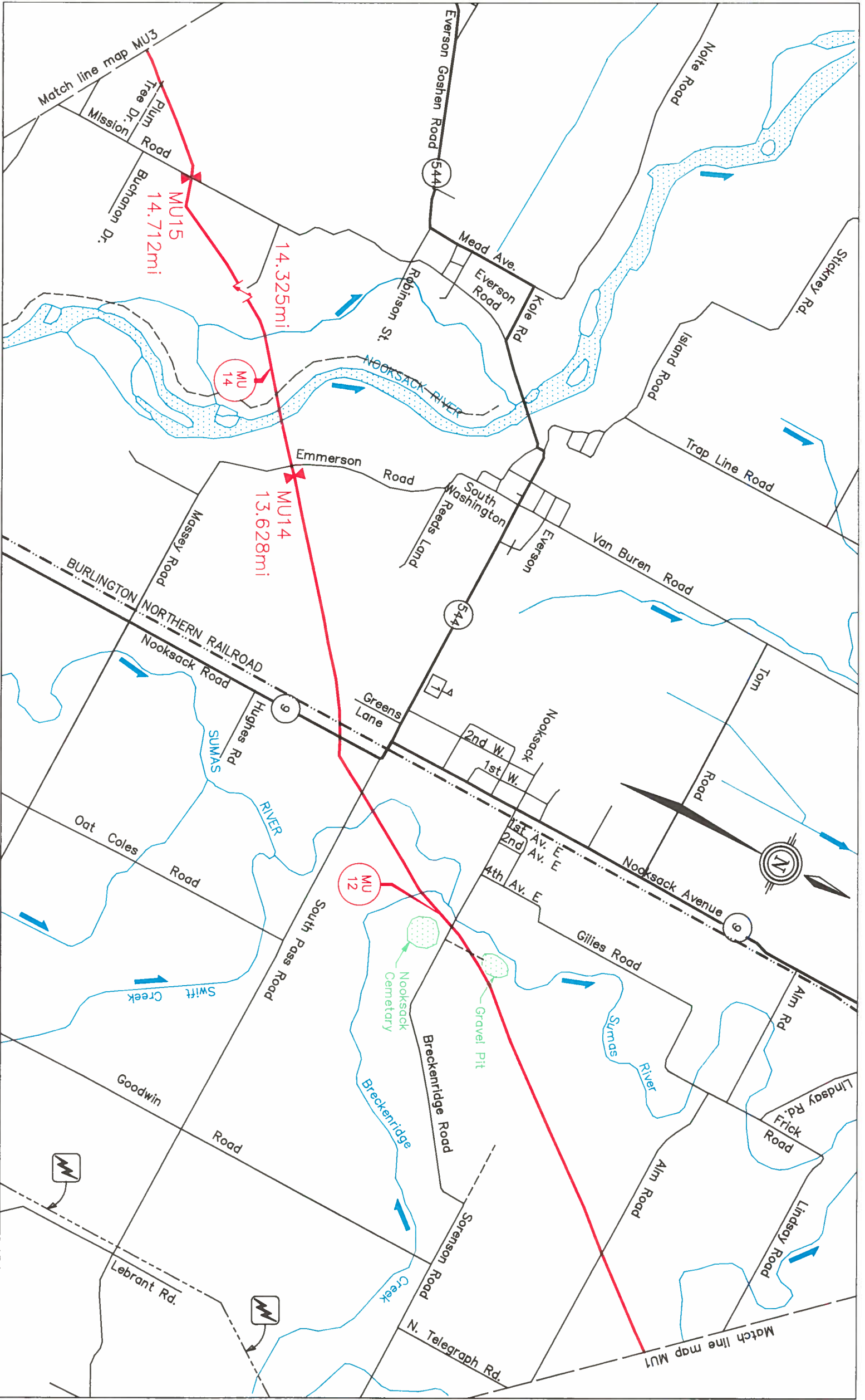


1 : 24,000
1in to 2000ft

LEGEND

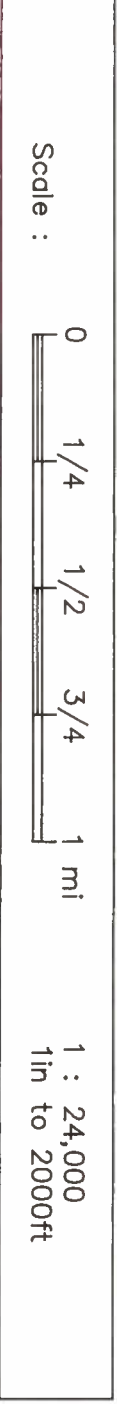
- Block Valve
- Check Valve
- Scraper Trap
- Miles
- Rectifier
- Control Point
- River Crossing
- Flow Direction
- Highway
- Secondary Road
- Dirt Road
- Railroad
- Aerial Power Lines

MILE
MU 5.5 TO
MU 10.0
SUMAS
MAP MU1



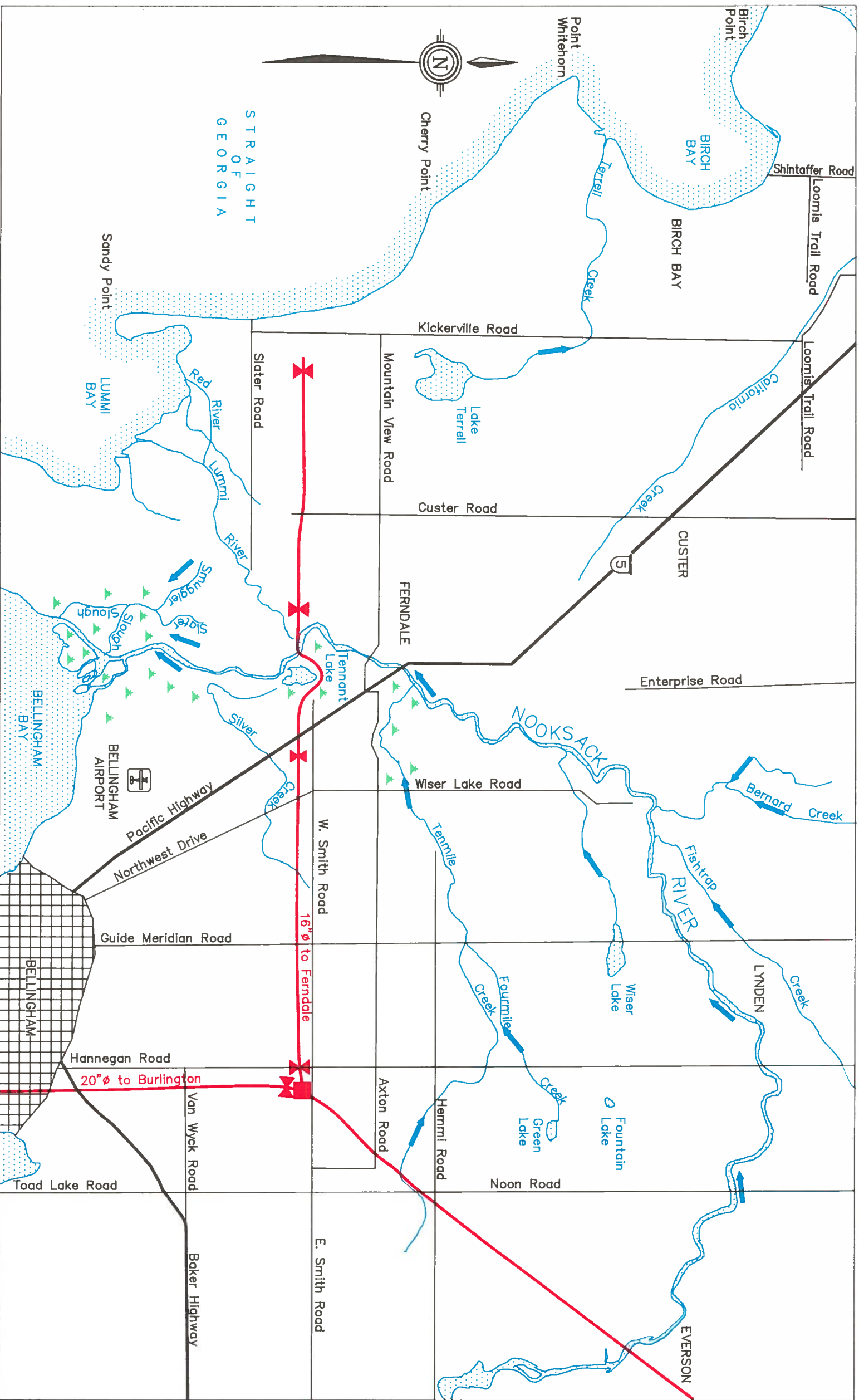
TRANS MOUNTAIN

DECEMBER 1994



LEGEND	
	Black Valve
	Check Valve
	Scraper Trap
	Miles
	Rectifier
	Control Point
	River Crossing
	Flow Direction
	Highway
	Secondary Road
	Dirt Road
	Railroad
	Aerial Power Lines

MILE
 MU 10.0 TO
 MU 15.25
 EVERSON
 MAP MU2



TRANS MOUNTAIN

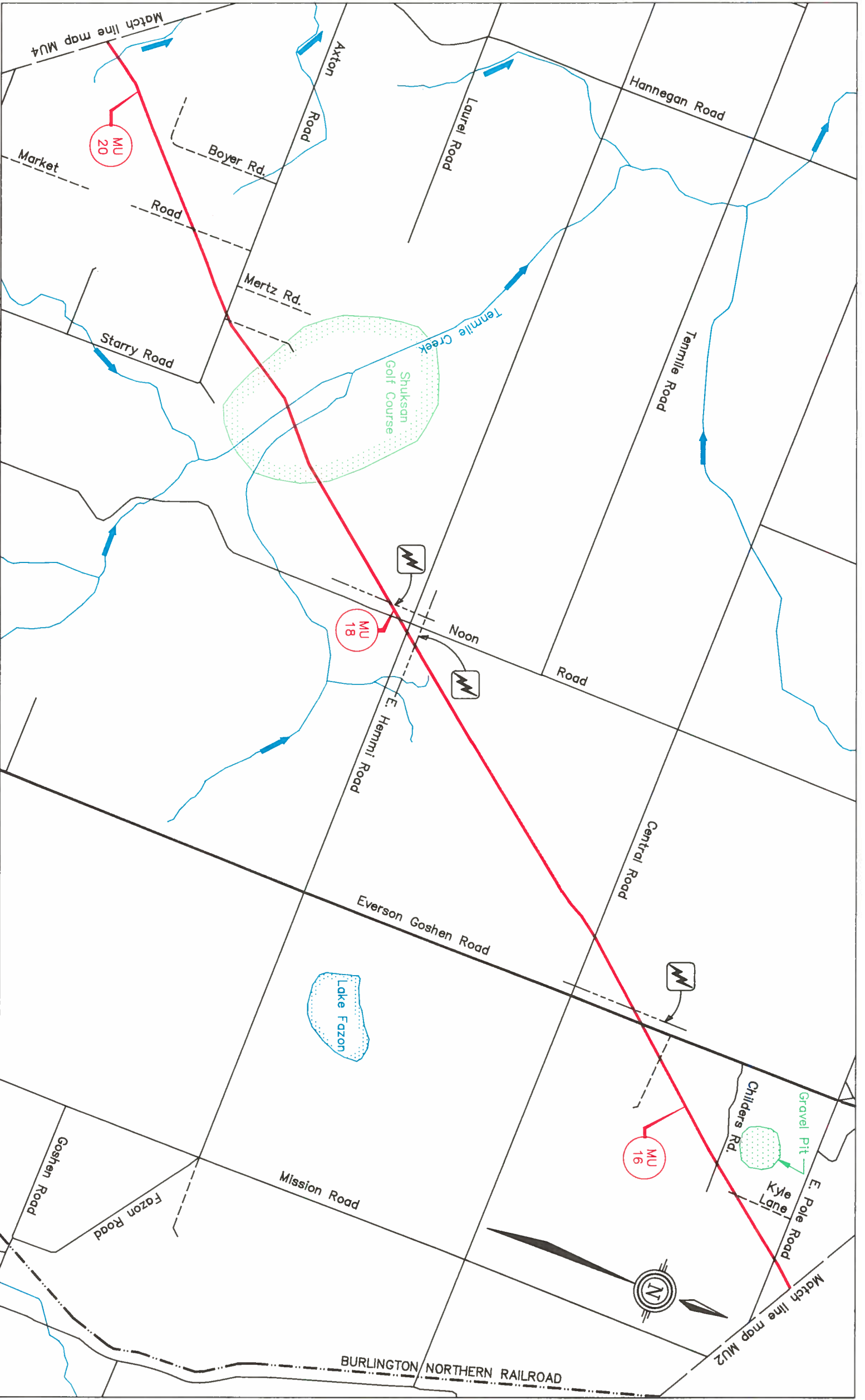
DECEMBER 1994



LEGEND	
	Block Valve
	Check Valve
	Scraper Trap
	Miles
	Rectifier
	Control Point
	River Crossing
	Flow Direction
	Highway
	Secondary Road
	Dirt Road
	Railroad
	Aerial Power Lines

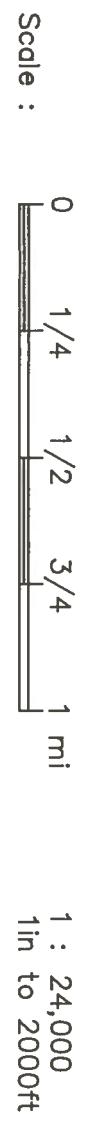
OFFSET MAP
NOOKSACK
RIVER

MAP MU2A



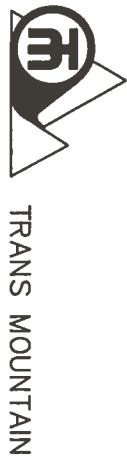
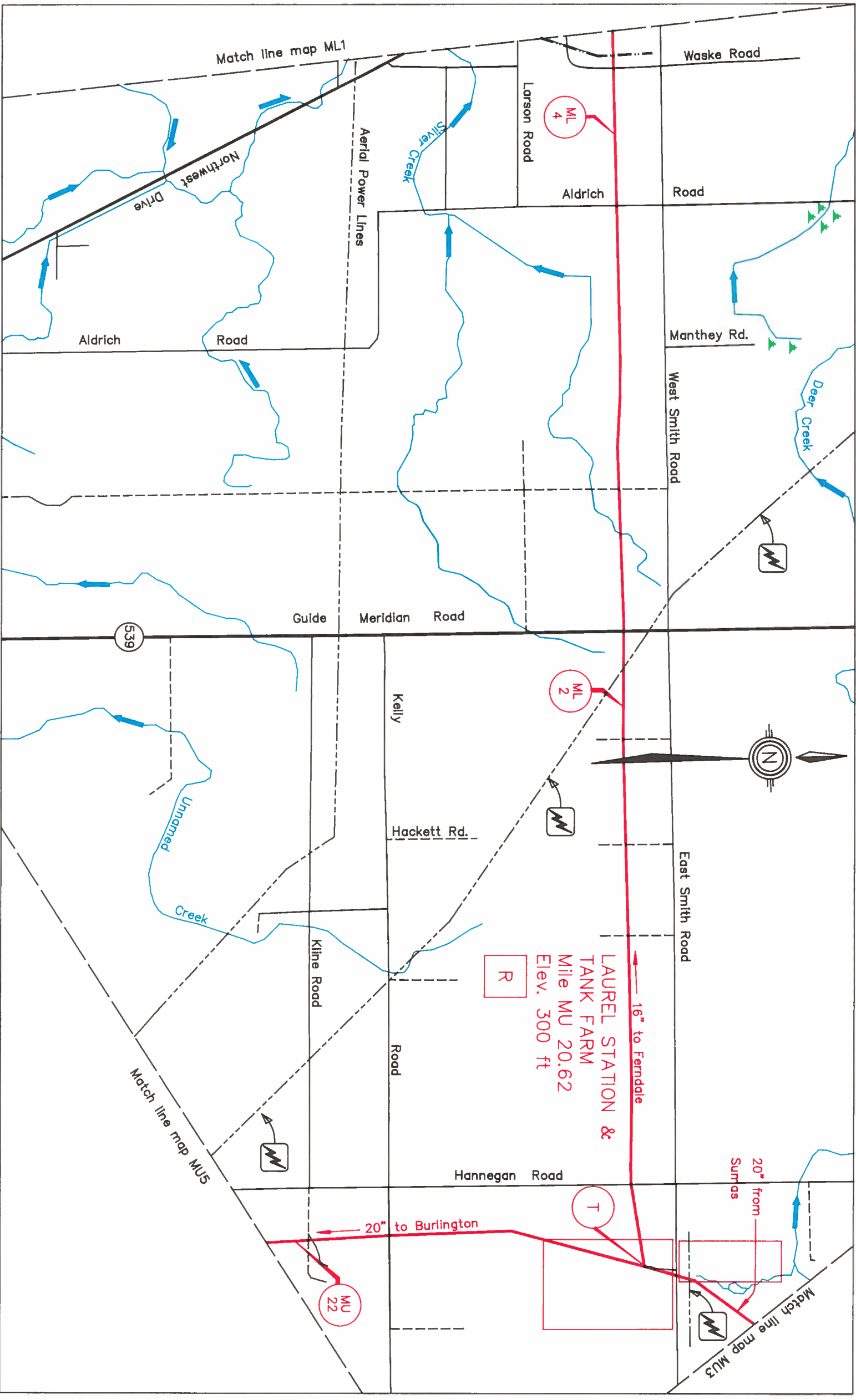
TRANS MOUNTAIN

DECEMBER 1994



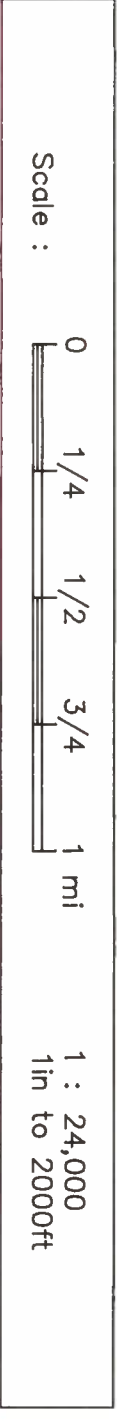
LEGEND	
	Block Valve
	Check Valve
	Scraper Trap
	Miles
	Rectifier
	Control Point
	River Crossing
	Flow Direction
	Highway
	Secondary Road
	Dirt Road
	Railroad
	Aerial Power Lines

MILE
 MU 15.25 TO
 MU 20.25
 TEN MILE
 CREEK
 MAP MU3



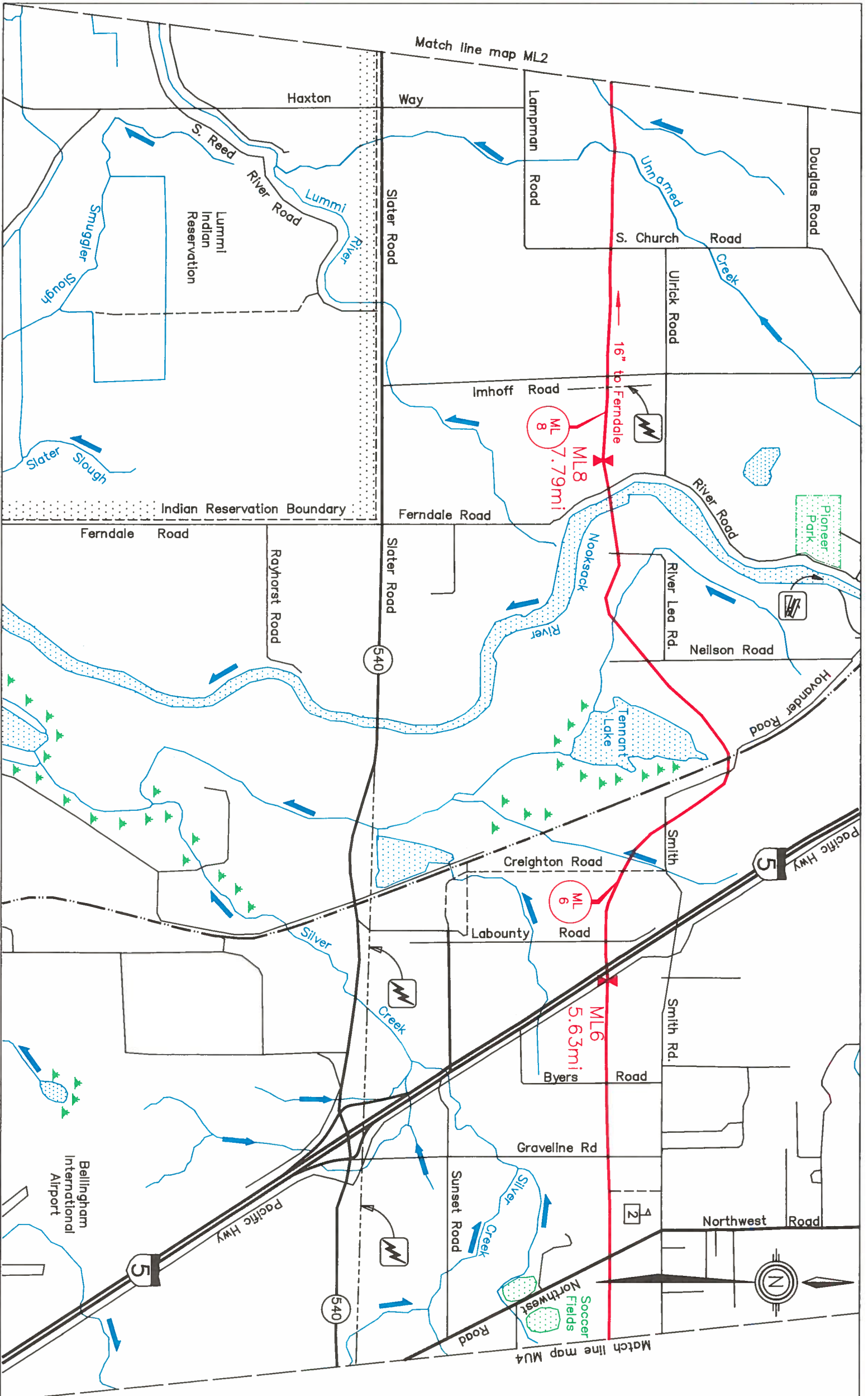
TRANS MOUNTAIN

DECEMBER 1994



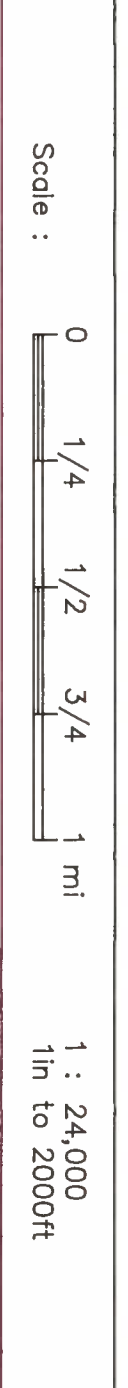
LEGEND	
	Block Valve
	Check Valve
	Scraper Trap
	Miles
	Rectifier
	Control Point
	River Crossing
	Flow Direction
	Highway
	Secondary Road
	Dirt Road
	Rollroad
	Aerial Power Lines

MILE	
MU 20.25 TO	
MU 22.0	
ML 0.0 TO	
ML 4.25	
LAUREL	
MAP MU4	



TRANS MOUNTAIN

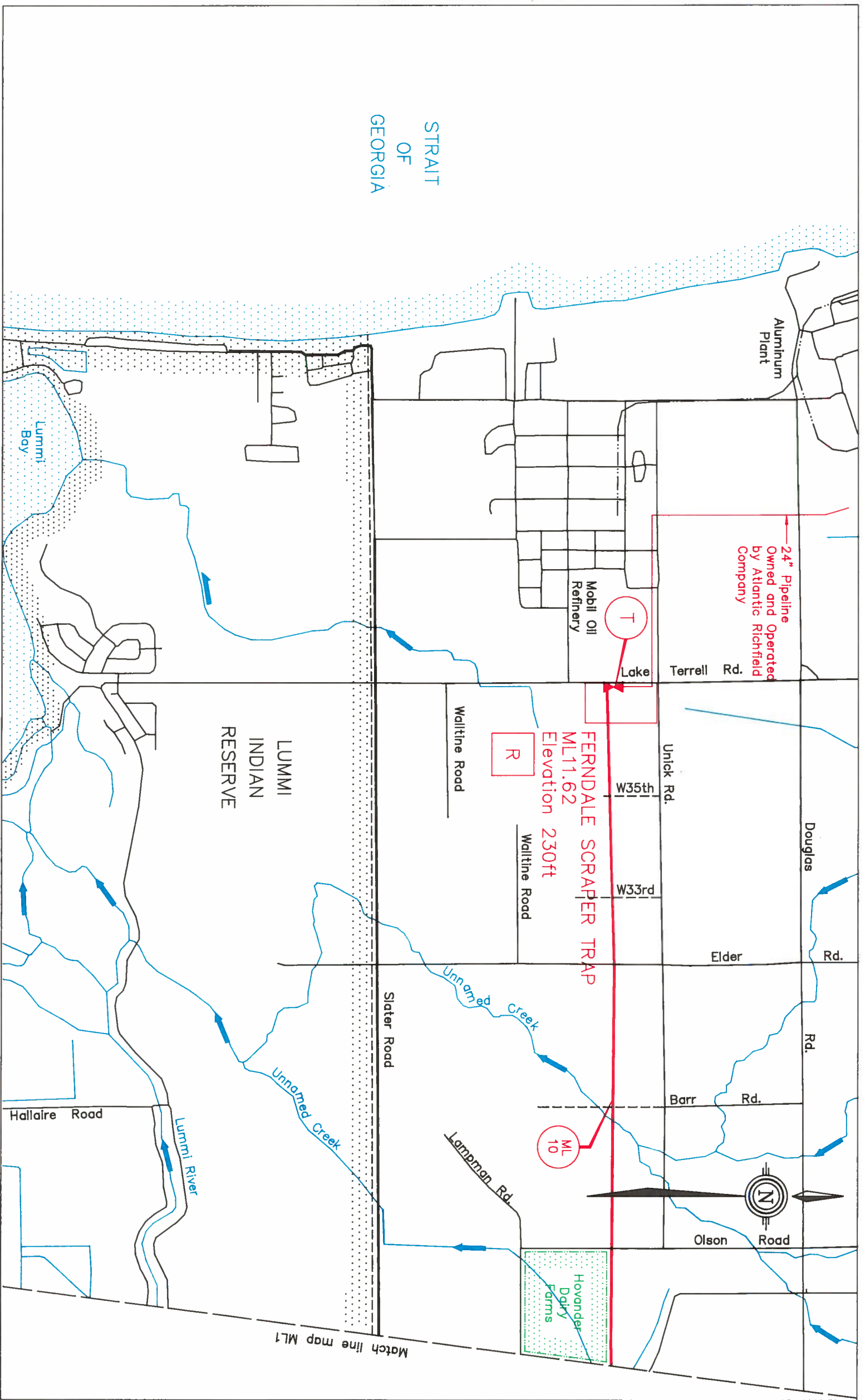
DECEMBER 1994



LEGEND	
	Black Valve
	Check Valve
	Scrapper Trap
	Miles
	Rectifier
	Control Point
	River Crossing
	Flow Direction
	Highway
	Secondary Road
	Dirt Road
	Railroad
	Aerial Power Lines

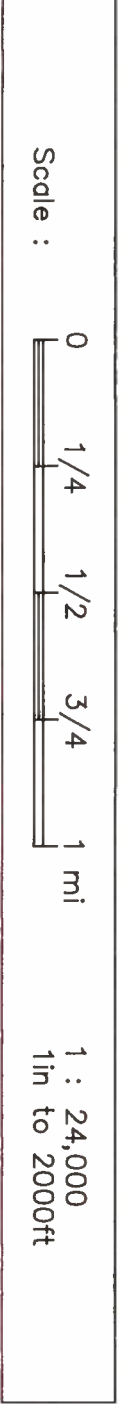
MILE
 ML 4.25 TO
 ML 9.0

FERNDALE
 MAP ML1



TRANS MOUNTAIN

DECEMBER 1994



LEGEND	
	Block Valve
	Check Valve
	Scraper Trap
	Miles
	Rectifier
	Control Point
	River Crossing
	Flow Direction
	Highway
	Secondary Road
	Dirt Road
	Railroad
	Aerial Power Lines

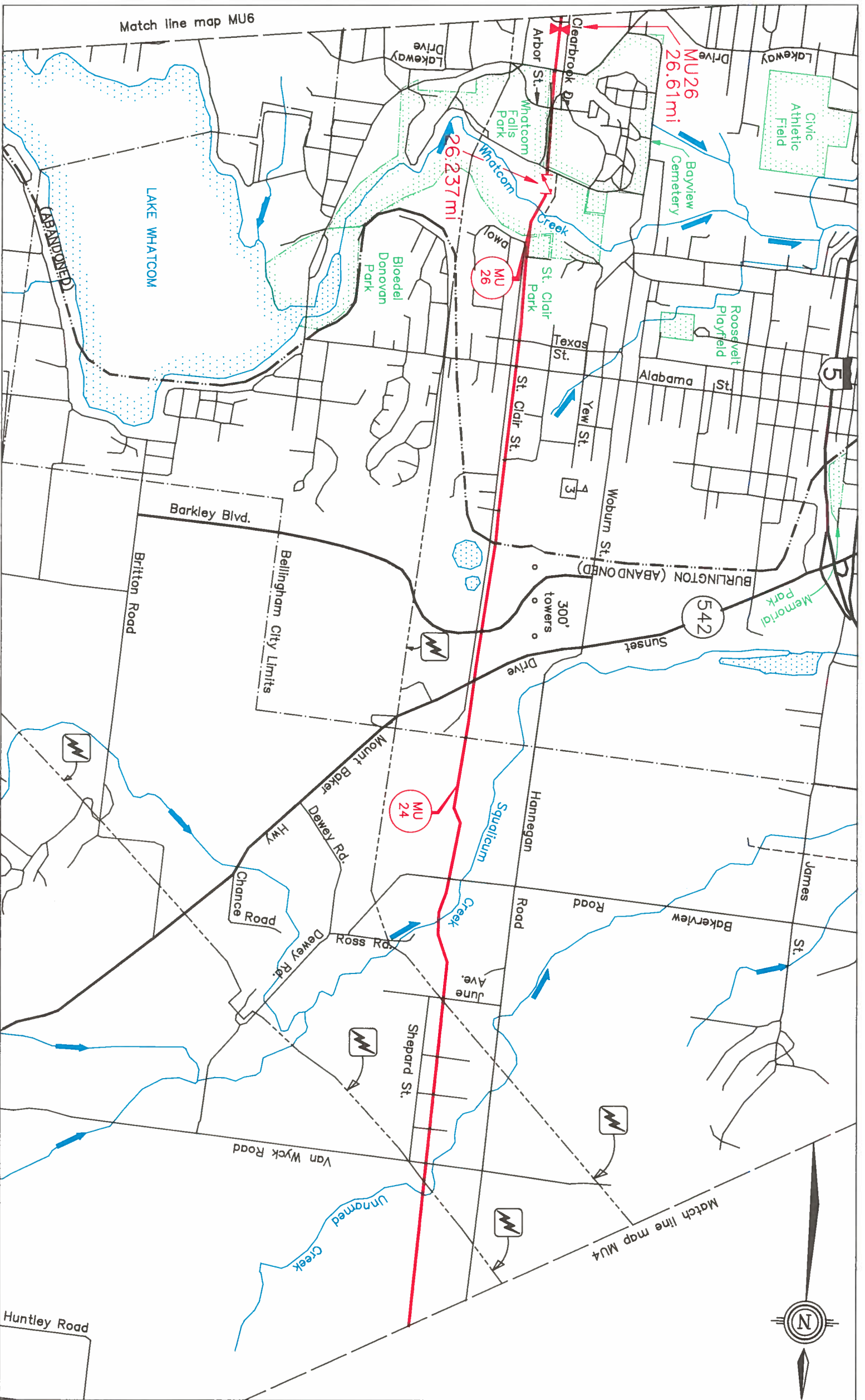
MILE

ML 9.0 TO

ML 11.62

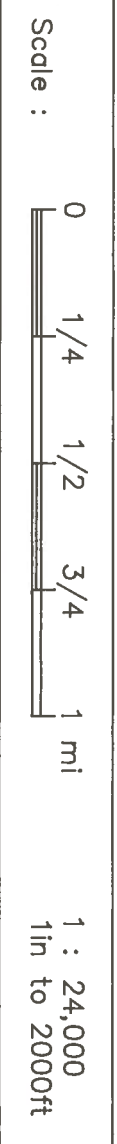
LAKE TERRELL

MAP ML2



TRANS MOUNTAIN

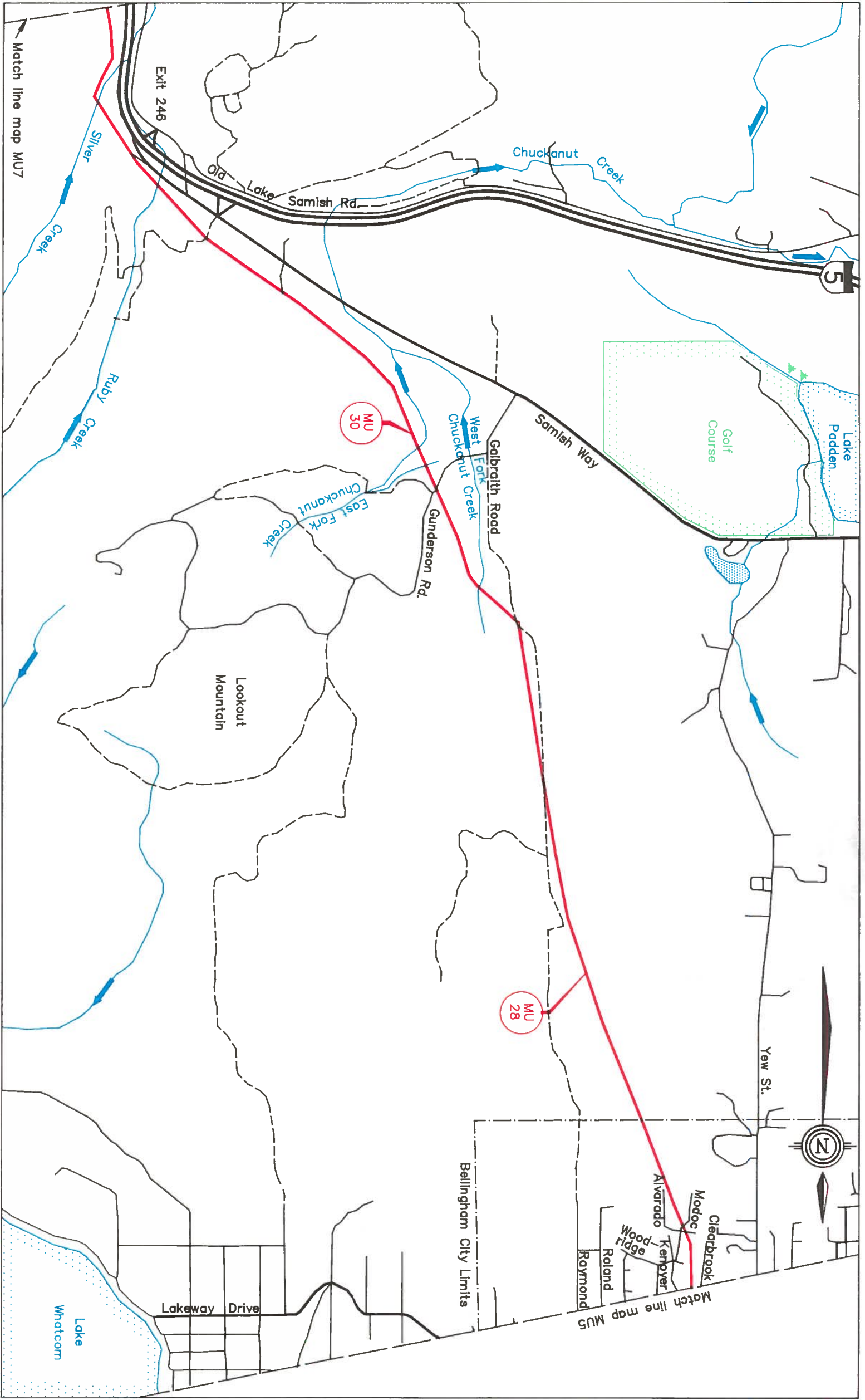
DECEMBER 1994



LEGEND

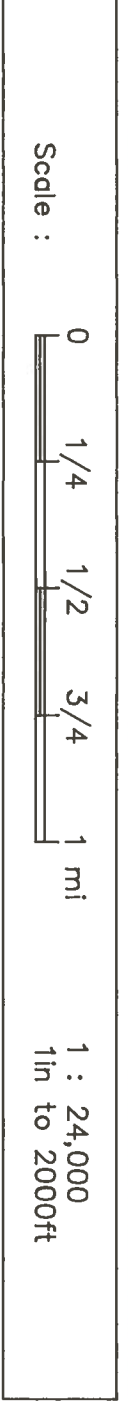
- Block Valve
- Check Valve
- Scraper Trap
- Miles
- Rectifier
- Control Point
- River Crossing
- Flow Direction
- Highway
- Secondary Road
- Dirt Road
- Railroad
- Aerial Power Lines

MILE
MU 22.0 TO
MU 26.75
BELLINGHAM
MAP M05



TRANS MOUNTAIN

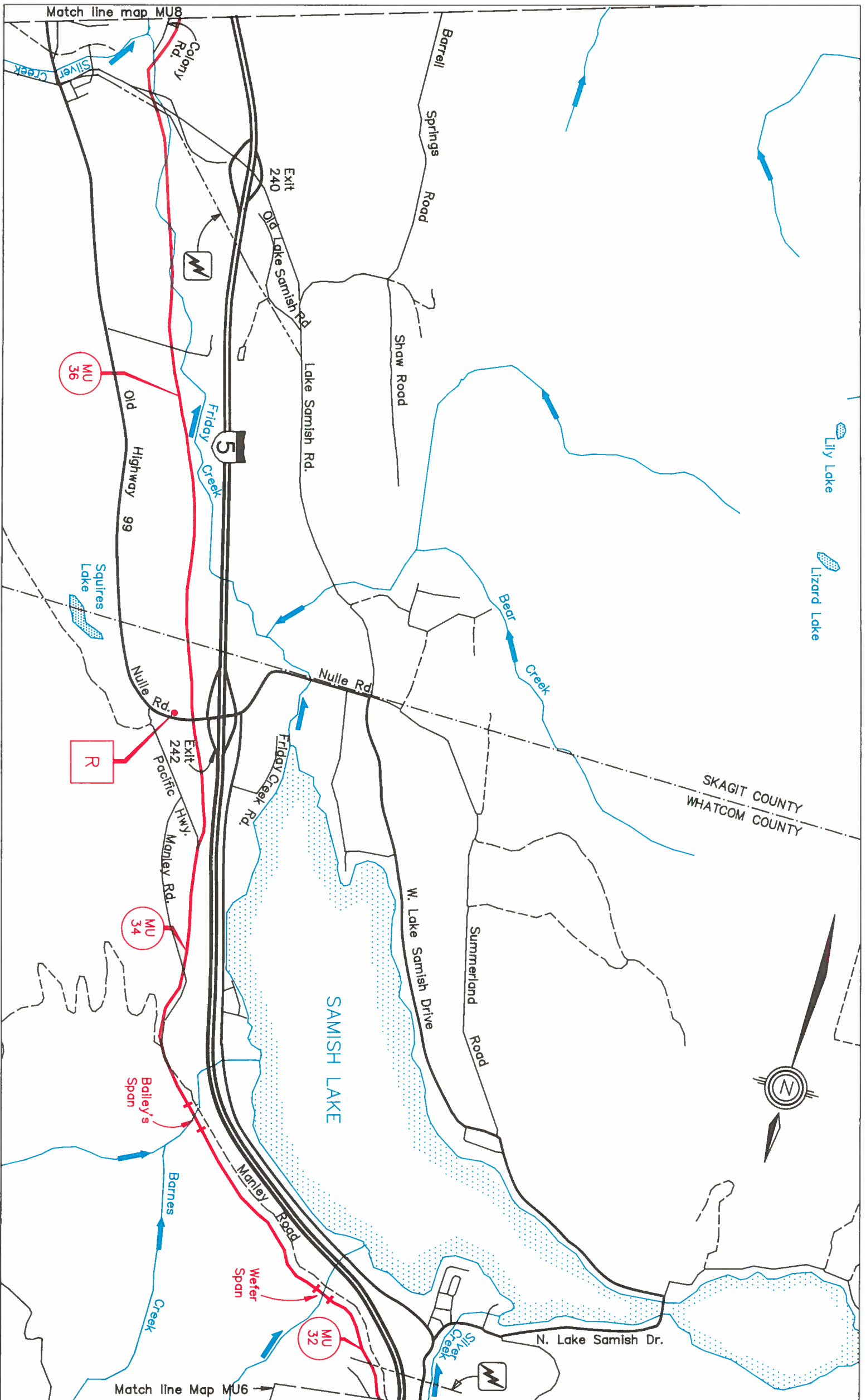
DECEMBER 1994



LEGEND

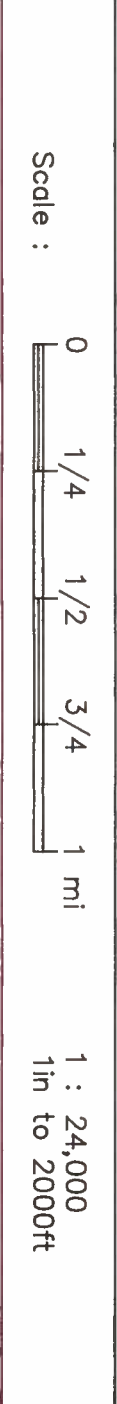
- Black Valve
- Check Valve
- Scraper Trap
- Miles
- Rectifier
- Control Point
- River Crossinging
- Flow Direction
- Highway
- Secondary Road
- Dirt Road
- Railroad
- Aerial Power Lines

MILE
 MU 26.75 TO
 MU 32.0
 GALBRAITH
 MAP MU6



TRANS MOUNTAIN

DECEMBER 1994



LEGEND

- Block Valve
- Check Valve
- Scraper Trap
- Miles
- Rectifier
- Control Point
- River Crossing
- Flow Direction
- Highway
- Secondary Road
- Dirt Road
- Railroad
- Aerial Power Lines

MILE
MU 32.0 TO
MU 37.5
SAMISH LAKE
MAP MU7