

Whatcom County Marine Resources Committee

2025 Annual Report

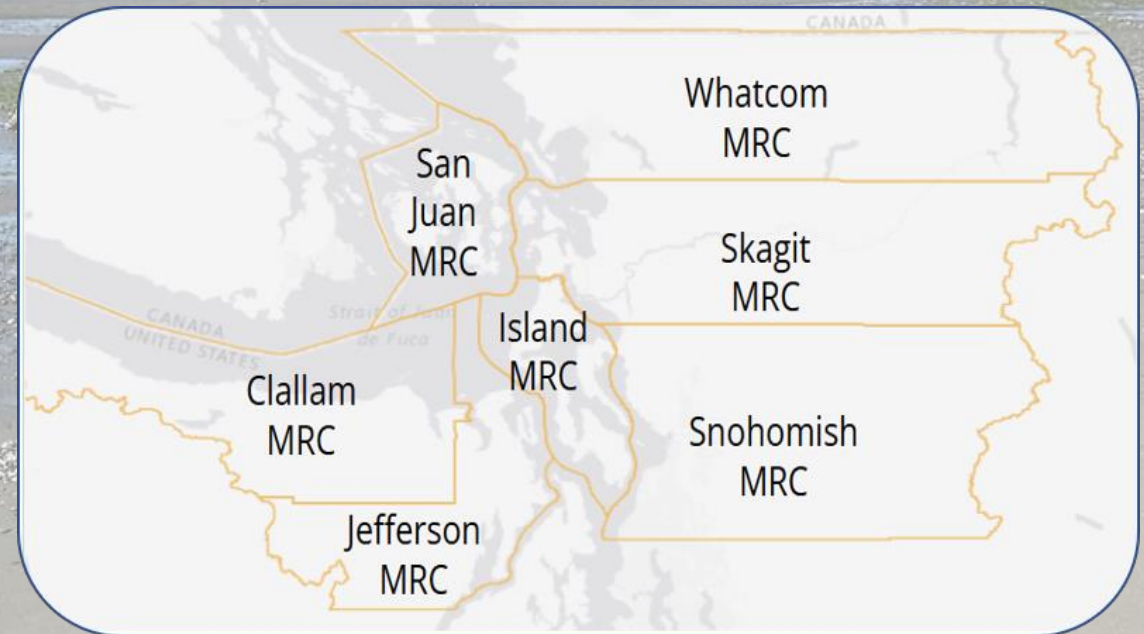


Prepared by:

Austin Rose, Natural Resource Specialist II, Whatcom MRC Staff
Dana Daniels, Natural Resources Specialist, Whatcom MRC Staff

Whatcom County Public Works – Natural Resources

What is a Marine Resources Committee (MRC)?



Who we are:

- Est 1999
- 19 member committee
- 5 interest groups
- Ex-Officios:

Elected Officials

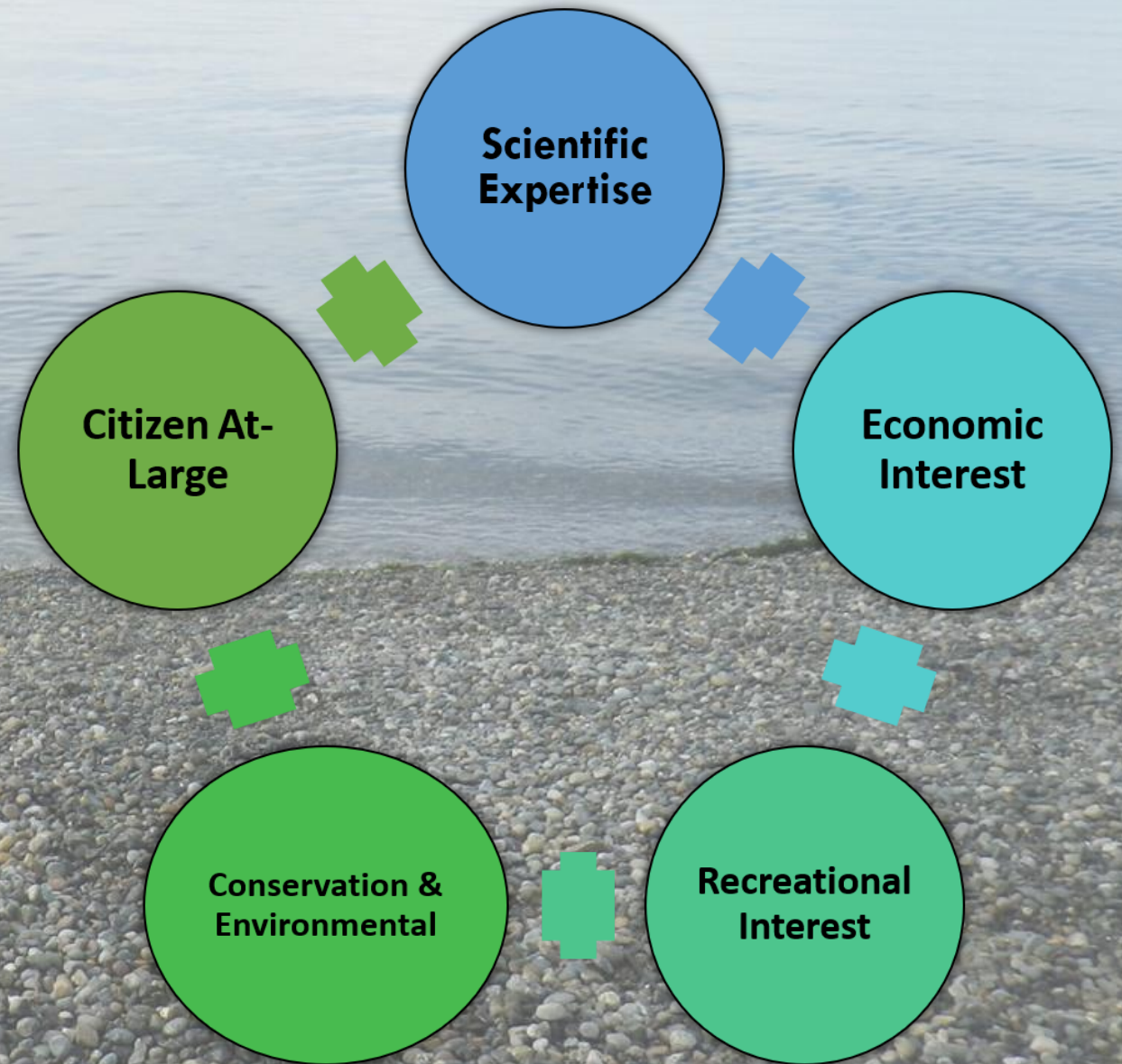
(County, Bellingham, Blaine)

Tribes

(Nooksack and Lummi)

Staff

Port of Bellingham



Funding:



\$34.79

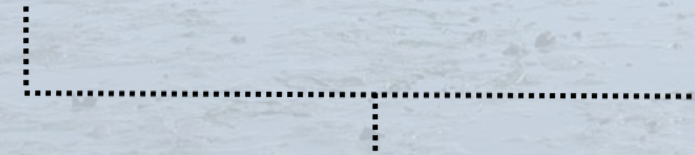
Estimated value of
a volunteer hour in
2025

(independentsector.org)



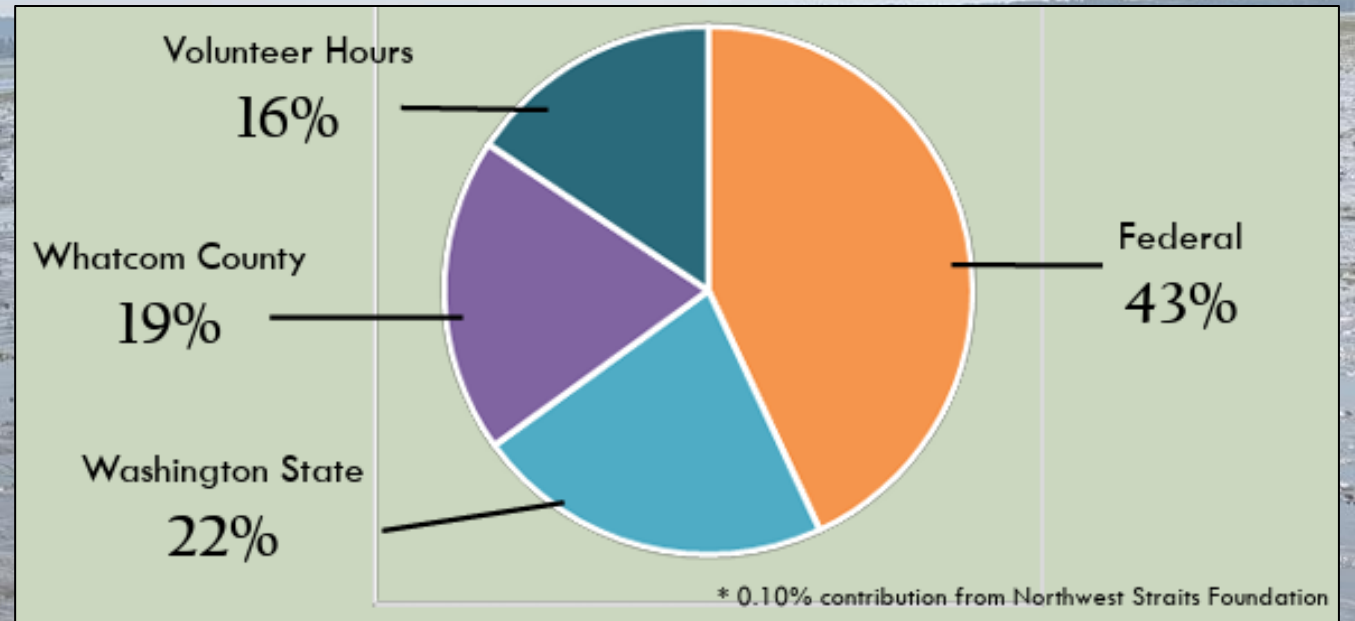
1333

Volunteer hours
donated in
2025



\$46,375

Total value to
Whatcom County



Operational Strategies

Advisory



Education and Outreach



**Monitoring and
Restoration**



PROJECTS



Beach Seine with Schools



Beach Seine with Schools since 2022

12

Beach Seine
with Schools
events have
taken place

13

Schools have
participated
in the
program

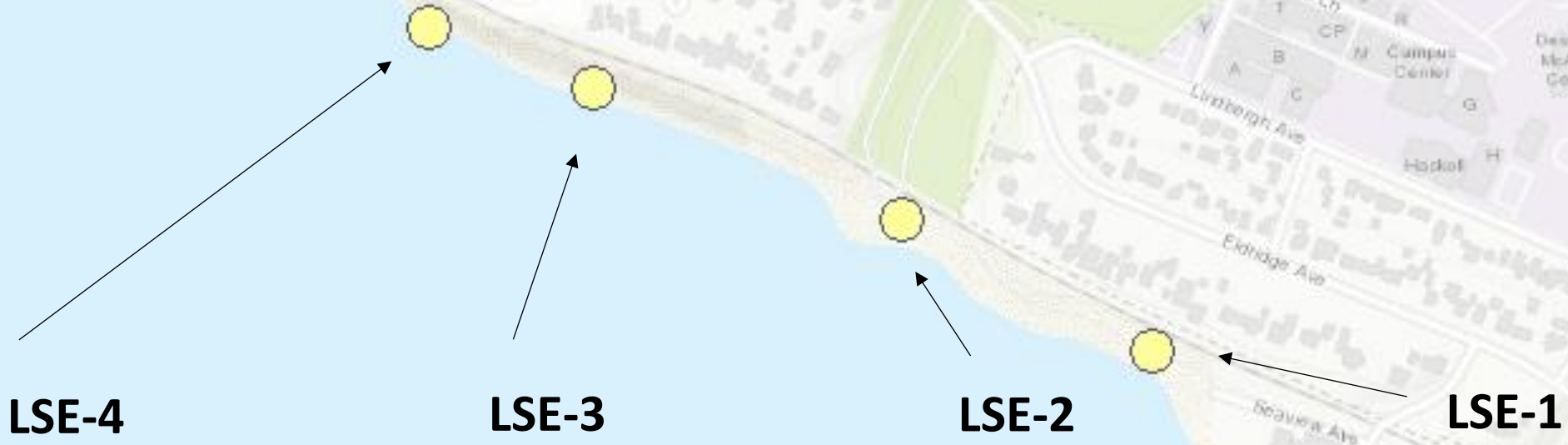
415

Hours of
volunteer
time has been
contributed

620

Total students
have
participated

Forage Fish Surveys



LSE-4

LSE-3

LSE-2

LSE-1

(17 surf smelt eggs)

(47 surf smelt eggs)

(6 surf smelt eggs)

(417 surf smelt eggs)



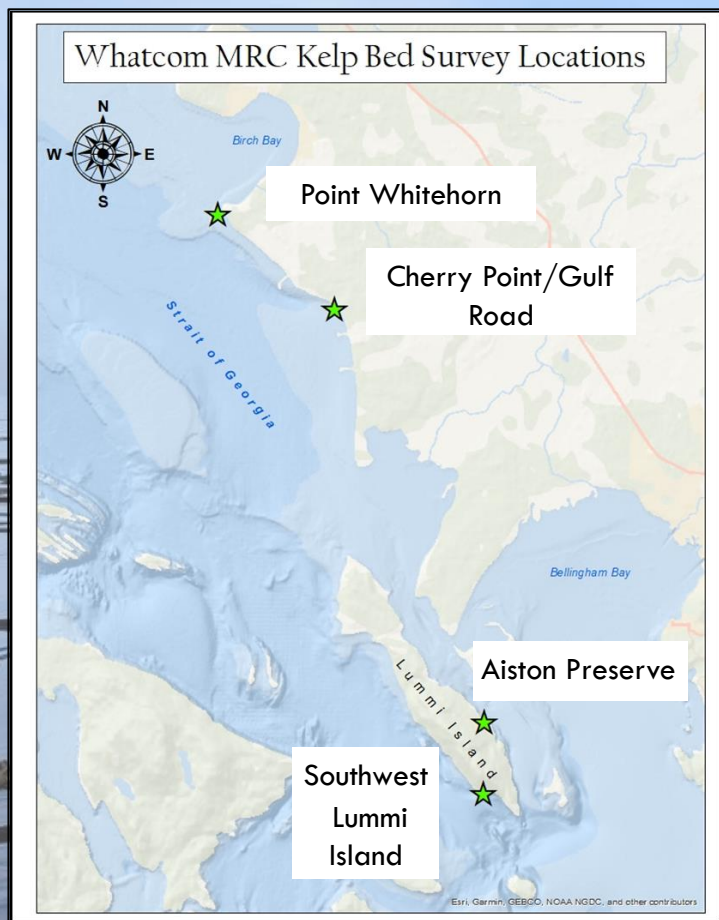
Forage Fish Surveys: Clayton Beach

“A dataset this large that goes back 50 years is rare and incredibly valuable. This project is part of one of the longest running, continuous datasets in the state and is used daily by regulators and environmental planners.”

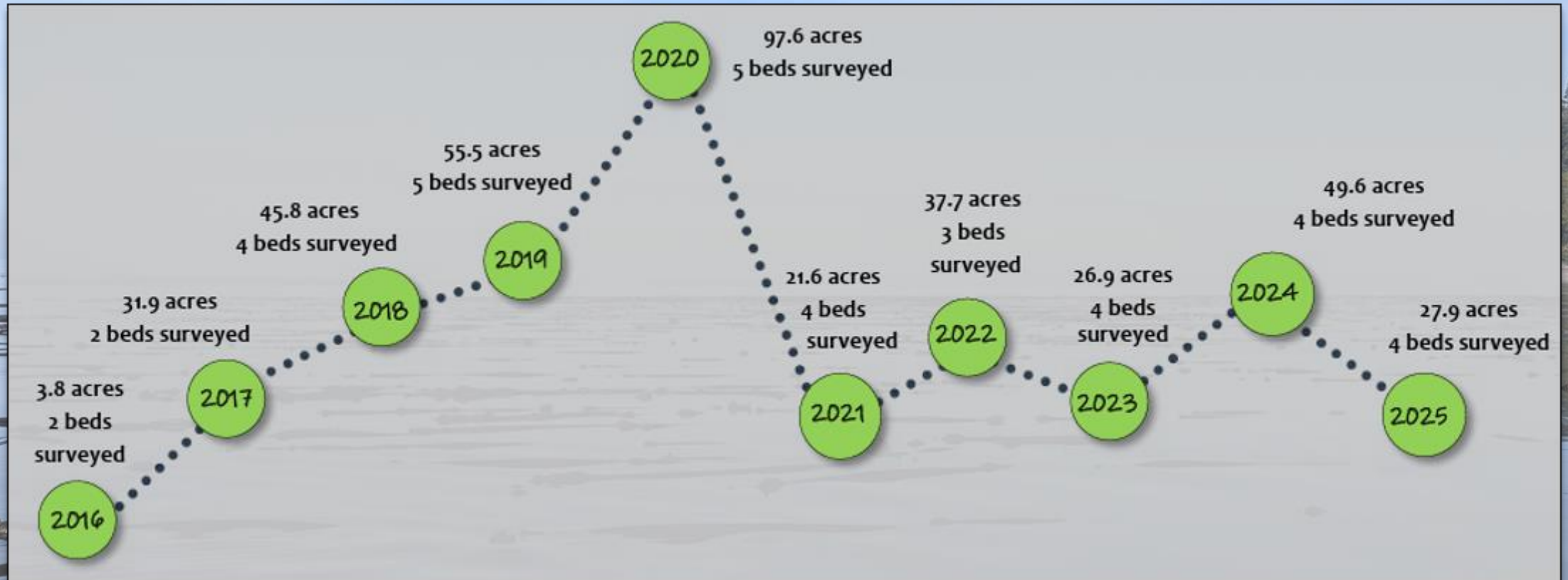
Kate Olson, Forage Fish
Biologist,
Washington Department of Fish
and Wildlife



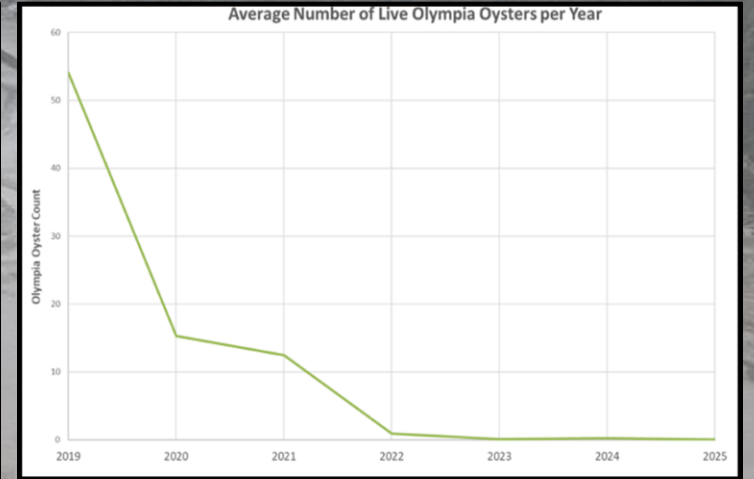
Bull Kelp Surveys



Bull Kelp Surveys: Data



Pilot Olympia oyster restoration North Chuckanut Bay



Pilot Olympia oyster restoration Drayton Harbor

Drayton Harbor Olympia Oyster Test Plot Areas



Harmful Algae Blooms (HABs)

- **SoundToxins**, managed by Washington Sea Grant, monitors harmful algal blooms (HABs) at 30+ sites across the Salish Sea
- Prior to **2023**, the network lacked monitoring data for north Whatcom County
- The MRC project fills data gap

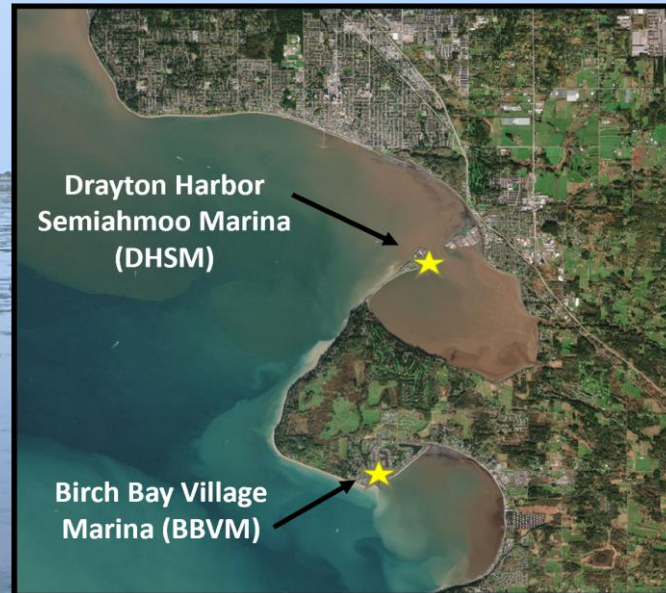
Commercial oyster farm

Historical concentrations

Influence of Fraser River

learning opportunities

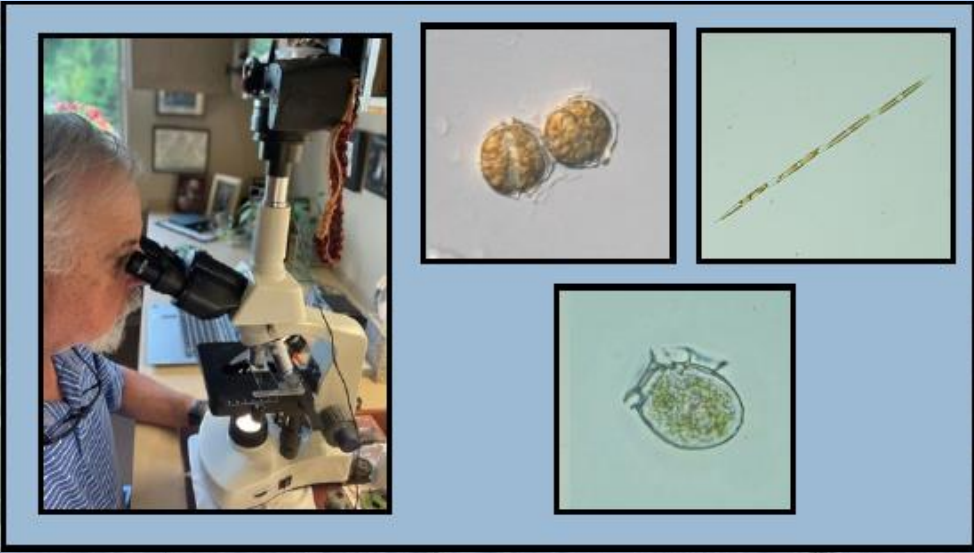
improves management/protection



Map showing all of the SoundToxins HAB monitoring sites throughout the Puget Sound. The two northernmost sites, including Drayton Harbor/Semiahmoo Marina and Birch Bay Village Marina, are sampled by the Whatcom MRC.



Harmful Algae Blooms: Sampling and Analysis

Two screenshots of web portals related to Harmful Algal Blooms and Shellfish Safety Information. The left screenshot shows a 'Harmful Algal Bloom (HAB) Data Entry' interface with a table of data and a map. The right screenshot shows a 'Shellfish Safety Information' page with a map and text regarding beach status and quality classification.

Harmful Algal Bloom (HAB) Data Entry

Area	Program	Status	Risk
420000	Algal Bloom	Approved	Low
430000	Algal Bloom	Approved	Low
440000	Algal Bloom	Approved	Low
450000	Algal Bloom	Approved	Low
460000	Algal Bloom	Approved	Low
470000	Algal Bloom	Approved	Low
480000	Algal Bloom	Approved	Low
490000	Algal Bloom	Approved	Low
500000	Algal Bloom	Approved	Low
510000	Algal Bloom	Approved	Low
520000	Algal Bloom	Approved	Low
530000	Algal Bloom	Approved	Low
540000	Algal Bloom	Approved	Low
550000	Algal Bloom	Approved	Low
560000	Algal Bloom	Approved	Low
570000	Algal Bloom	Approved	Low
580000	Algal Bloom	Approved	Low
590000	Algal Bloom	Approved	Low
600000	Algal Bloom	Approved	Low

Shellfish Safety Information

Update: Mon, 11 Mar 2024 03:01:03 PDT

Shoreline shellfish harvesting areas are managed by both the DOH (safety & water quality) and the Fisheries Department (harvest regulations).

Beach Status

Beaches are closed for the recreational (sport) harvest of scallops due to bluebloaters.

Bluebloom Closure Zones (Click area for info)
Closed for Outer and Marsh Clams only

Quality Classification (Click area for info)
Approved
Conditionally Approved

Vessel Turn-In Recycling Event



29
total
vessels



350
gallons of
hazardous liquids



69.4
tons of
total vessel
debris



80%
of this
debris was
recycled

Thank you!

