

Severe Weather Shelter Update

Ann Beck & Michaela Mandala

12/3/24

Public Works and Health Committee

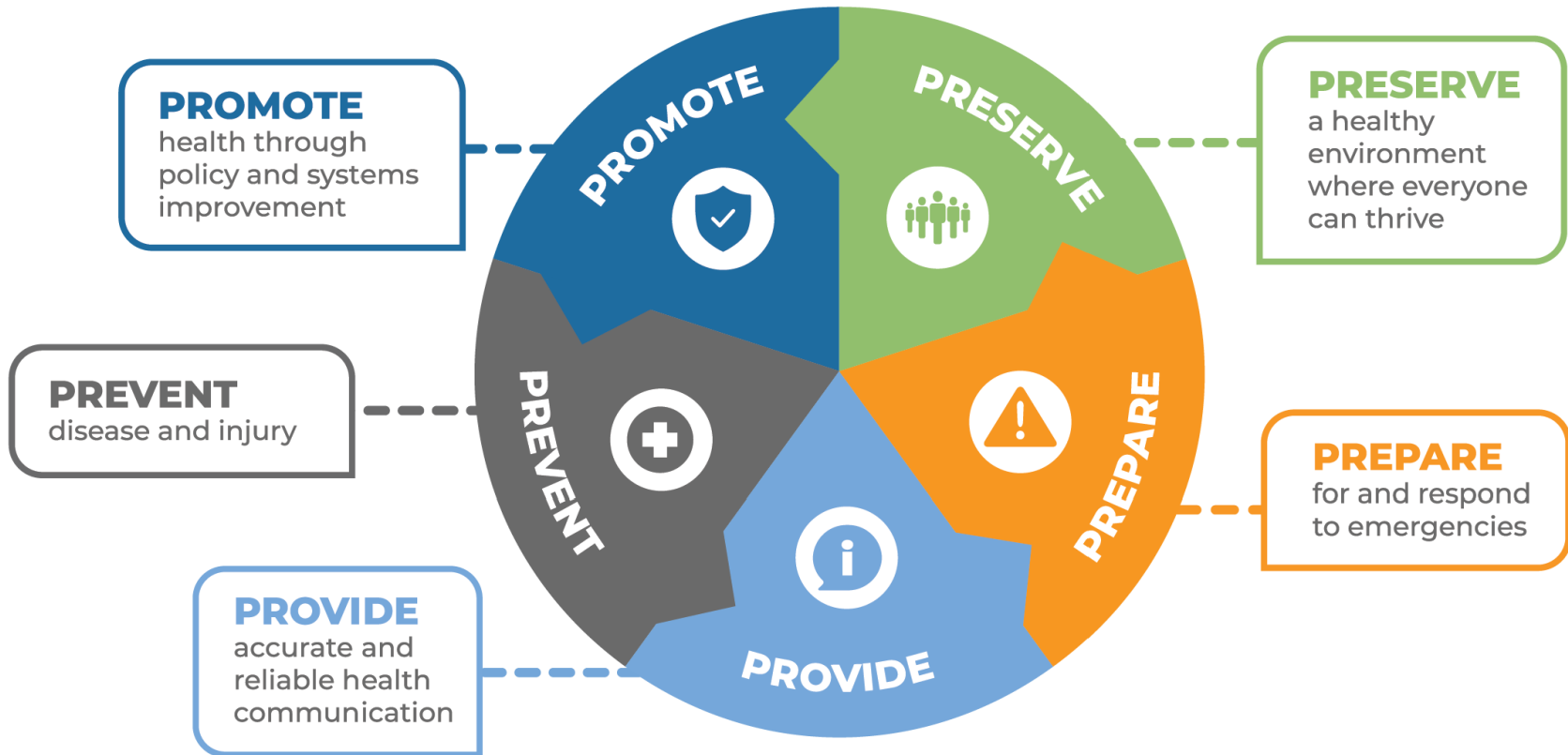


WHATCOM COUNTY
**HEALTH AND
COMMUNITY
SERVICES**



OUR PURPOSE:

We serve Whatcom County by
ADVANCING EQUITY & **PARTNERING WITH OUR COMMUNITY** to:



PROMOTE

health through policy and systems improvement

PRESERVE

PRESERVE

a healthy environment where everyone can thrive

PREPARE

PREPARE

for and respond to emergencies

PROVIDE

PROVIDE

accurate and reliable health communication

PREVENT

PREVENT

disease and injury

Where we are now...

Space- Lease is signed. Great support across departments.

Staffing-17 temp staff hired

9 regular staff ready to step w/ 6 of those operating as leads.

Additional staff applications in process bringing total to 34.

Volunteers-10 volunteers trained and an additional 70 applied, 15 of those are returning volunteers

Training-Paid staff completes **21** hours of training

Volunteers complete **13** hours

697 hours of training have been completed so far

Food & Supplies- Kitchen on site, allows for healthier food options. Working with our food safety colleagues to make sure adequate preparation in place. Space is set up with cots, sleeping bags, and other supplies.

Contractors supporting the work-cleaners, porta-potties, laundry, security



Expected Cost...



Current Budget- 40-45 days of opening, roughly \$557,000.

If needed, we anticipate an additional \$100,000 for 50-55 nights

\$457,000 County

\$100,000 City of Bellingham

If additional funds are needed...

\$50,000 each from City and County for a total of
\$657,000

When will we open...

Temperature Threshold:
Forecasted 32 degrees for
four or more hours

Activation Protocol-48
hours in advance-See flow
chart





Video & Questions

WHATCOM COUNTY
HEALTH AND
COMMUNITY
SERVICES