





# LIFE CHANGING SOLUTIONS

## LIGHTHOUSE MISSION MODEL



**HURTING**  
Children,  
Adults &  
Families

### OUTREACH →

Food, Shelter, Clothing  
Grace, Hope, Opportunity  
Relationship & Motivation

### RECOVERY →

Spiritual Growth  
Healing From Addictions  
Healthy Relationships

### RESTORATION

Jobs & Education  
Equipping & Life Skills  
Community Connection



**THRIVING**  
Children,  
Adults &  
Families

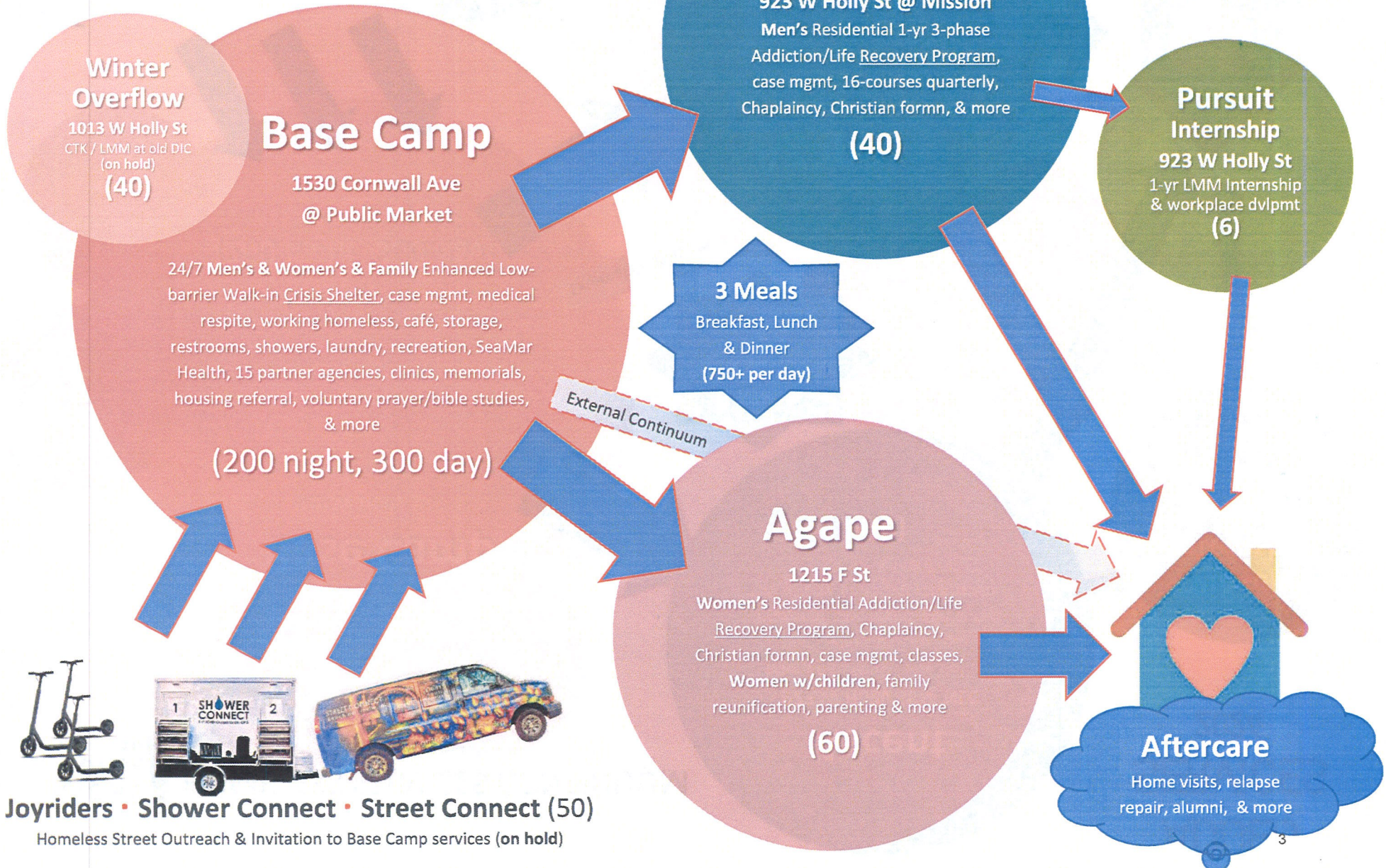




# HOMELESS SERVICES CONTINUUM

-- (capacity served) --

## CURRENT SERVICES 2023



**Winter Overflow**  
1013 W Holly St  
CTK / LMM at old DIC  
(on hold)  
(40)

**Base Camp**  
1530 Cornwall Ave  
@ Public Market

24/7 Men's & Women's & Family Enhanced Low-barrier Walk-in Crisis Shelter, case mgmt, medical respite, working homeless, café, storage, restrooms, showers, laundry, recreation, SeaMar Health, 15 partner agencies, clinics, memorials, housing referral, voluntary prayer/bible studies, & more

(200 night, 300 day)

### Ascent

923 W Holly St @ Mission  
Men's Residential 1-yr 3-phase  
Addiction/Life Recovery Program,  
case mgmt, 16-courses quarterly,  
Chaplaincy, Christian formn, & more

(40)

### 3 Meals

Breakfast, Lunch  
& Dinner  
(750+ per day)

External Continuum

### Pursuit Internship

923 W Holly St  
1-yr LMM Internship  
& workplace dvlpmt  
(6)

### Agape

1215 F St  
Women's Residential Addiction/Life  
Recovery Program, Chaplaincy,  
Christian formn, case mgmt, classes,  
Women w/children, family  
reunification, parenting & more

(60)

### Aftercare

Home visits, relapse  
repair, alumni, & more



**Joyriders • Shower Connect • Street Connect (50)**

Homeless Street Outreach & Invitation to Base Camp services (on hold)





# HOMELESS SERVICES CONTINUUM

(capacity served)

**Severe Weather Overflow**  
(100)

**Behavioral Health**  
Micro-Shelters  
Men's & Women's  
(25)

**Seniors/Medical**  
Micro-Shelter  
(25)

## Base Camp

910 W Holly  
Main Mission

**Crisis Families**  
Micro-Shelter  
(26)

24/7 Men's & Women's Enhanced Low-barrier Walk-in Crisis Shelter, case mgmt, café, storage, restrooms, showers, laundry, recreation, SeaMar Health, 15 partner agencies, clinics, memorials, housing referral, voluntary prayer/bible studies, & more.

**Flex**  
Micro-Shelter  
Students, workers, overflow, etc.  
(24)

(200 night, 300 day)

## Ascent

923 W Holly St @ NLC  
Men's Residential 1-yr 3-phase certified Addiction/Life Recovery Program, case mgmt, 16-courses quarterly, Chaplaincy, Christian formn, & more.

(40)

### 3 Meals

Breakfast, Lunch & Dinner  
(1200+ per day)

External Continuum

**Workplace Development & Business Enterprise**  
910 W Holly  
(x3 businesses onsite)

**ADDED SERVICES 2024**

## Pursuit Internship

923 W Holly St  
1-yr LMM Internship & workplace dvlpmt  
(6)

## Agape

1215 F St  
Women's Residential Addiction/Life Recovery Program, Chaplaincy, Christian formn, case mgmt, classes, Women w/children, family reunification, & more

(60)

## Aftercare

Home visits, relapse repair, alumni, & more



**Joyriders • Shower Connect • Street Connect (100)**

Homeless Street Outreach & Invitation to Base Camp services

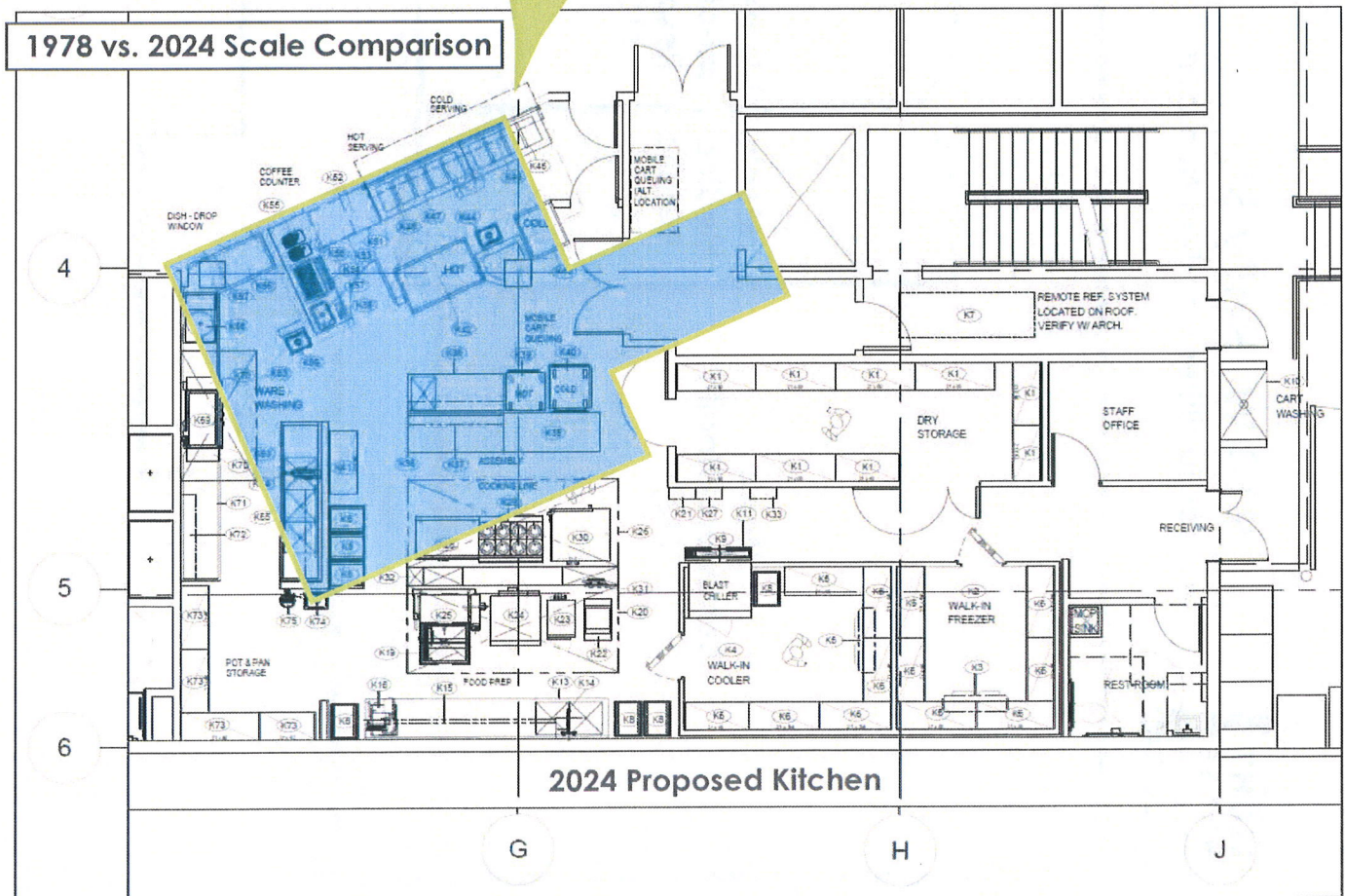
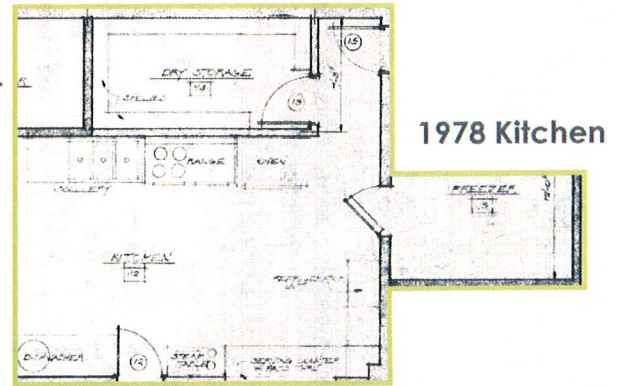




# Lighthouse Mission Rebuild

## 1978 Kitchen vs. 2024 Kitchen

The current Lighthouse Mission kitchen, originally built in 1978 and designed to serve less than 200 meals per day, is inadequate and in dire need of replacement. The limited space and equipment restricts the quantity, variety and nutritional value of the meals that can currently be provided. The proposed 2024 kitchen, designed to be a part of a new Lighthouse Mission structure would allow for more efficient, higher quantity food preparation and storage, as well as the ability to provide healthier and more varied options for the residents of the shelter. Investing in a new kitchen is essential for meeting basic needs of those experiencing homelessness in our community and seeing their lives transformed.

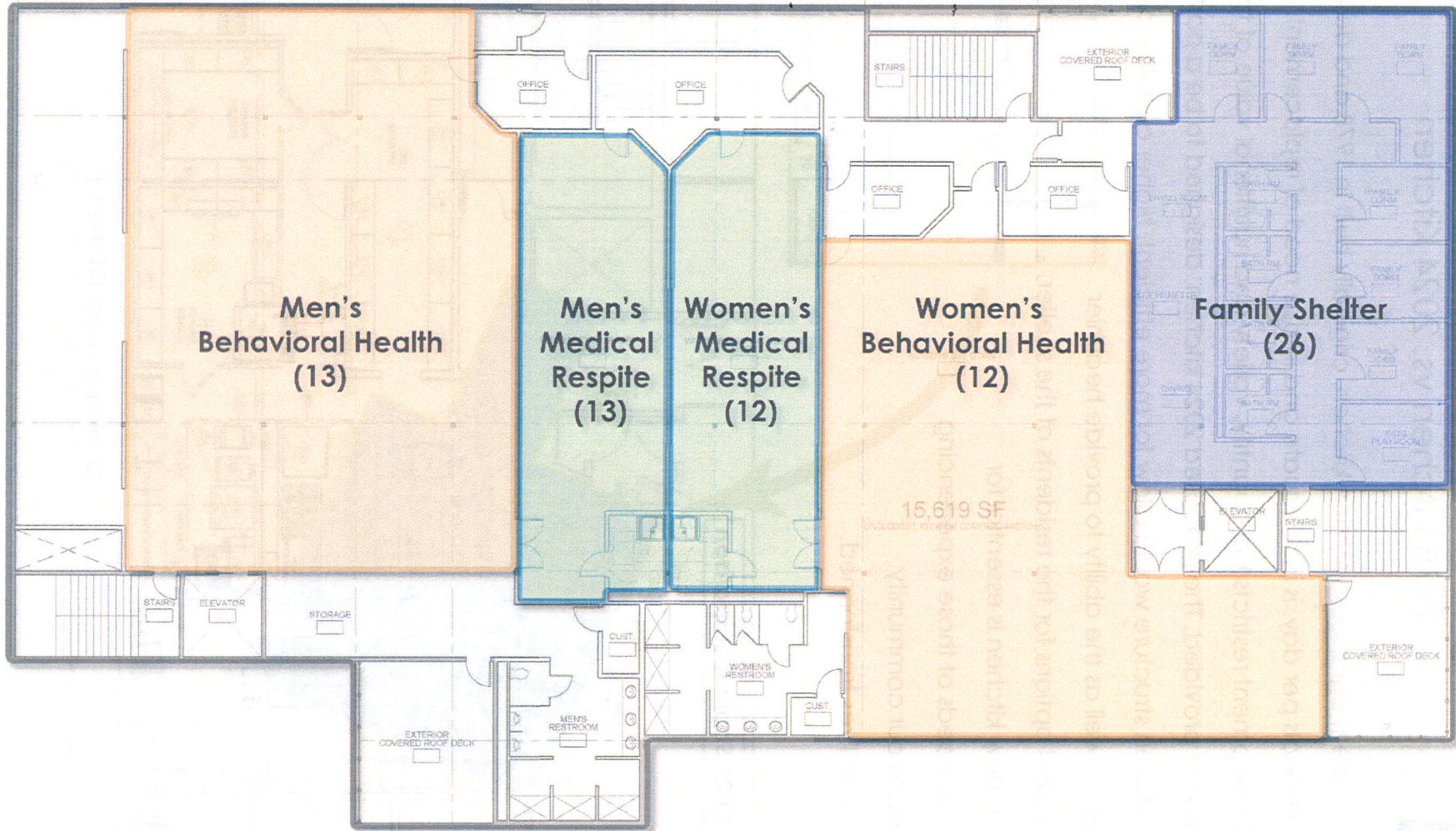






# 910 W. Holly St.

## 5th Floor Facilities and Bed Numbers







# 910 W. Holly St. 4th Floor Facilities and Bed Numbers

