

100% electric

WTA | CONNECTING
PEOPLE TO
OPPORTUNITY



AUGUST 6, 2025
Whatcom County Council

A photograph of a middle-aged man with a goatee, smiling and looking out the window of a vehicle, likely a bus. He is wearing a maroon shirt and a dark jacket. The background shows a blurred street scene with trees and buildings.

At WTA, our mission is to enhance our community by:

**Delivering safe, reliable,
efficient, and friendly service**

**Offering environmentally
sound transportation choices**

**Providing leadership in creating
innovative transportation solutions**

**Partnering with our community to
improve transportation systems**

WTA | **CONNECTING
PEOPLE TO
OPPORTUNITY**

Community impact, by the numbers

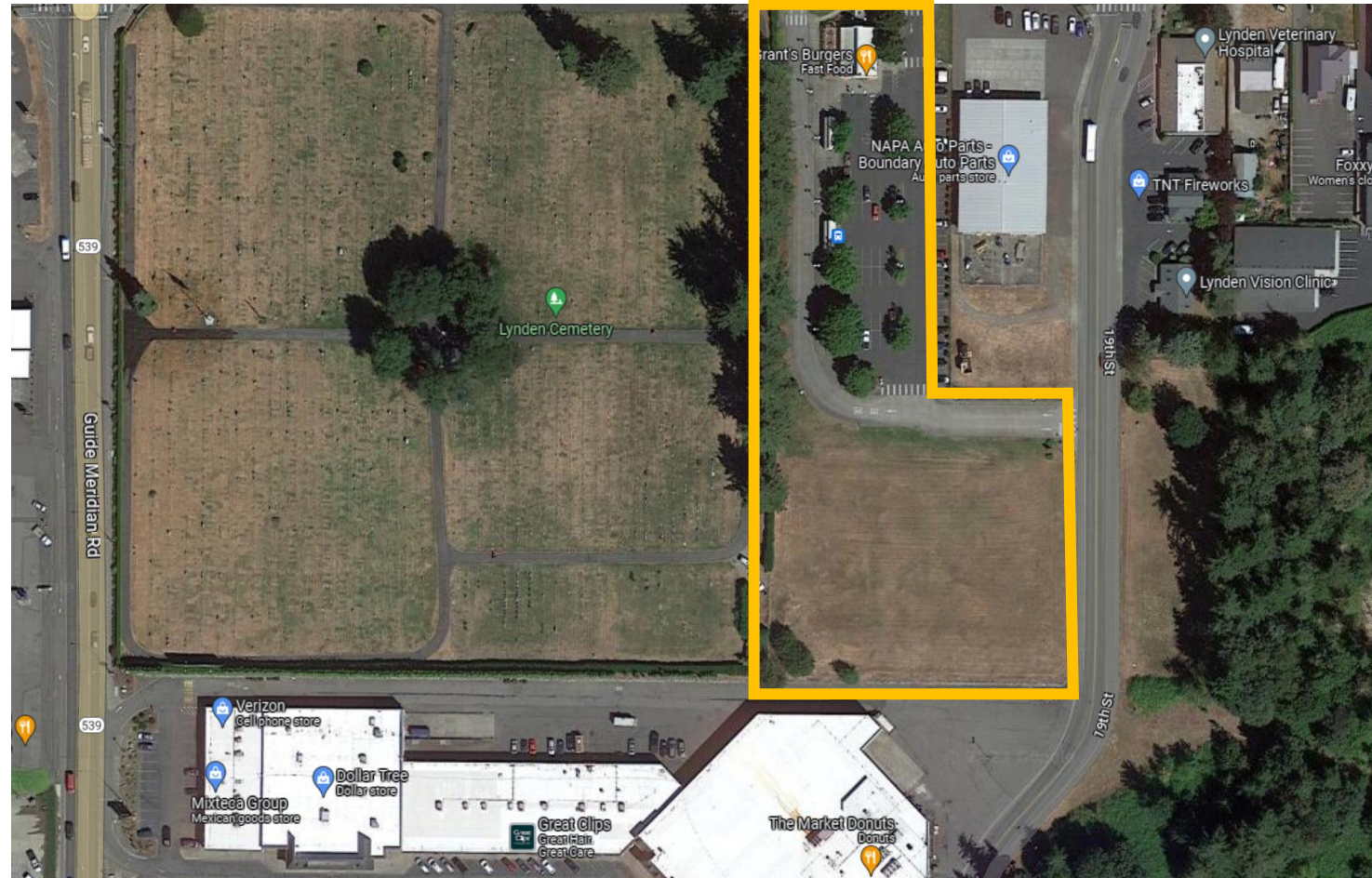


Thinking beyond the bus

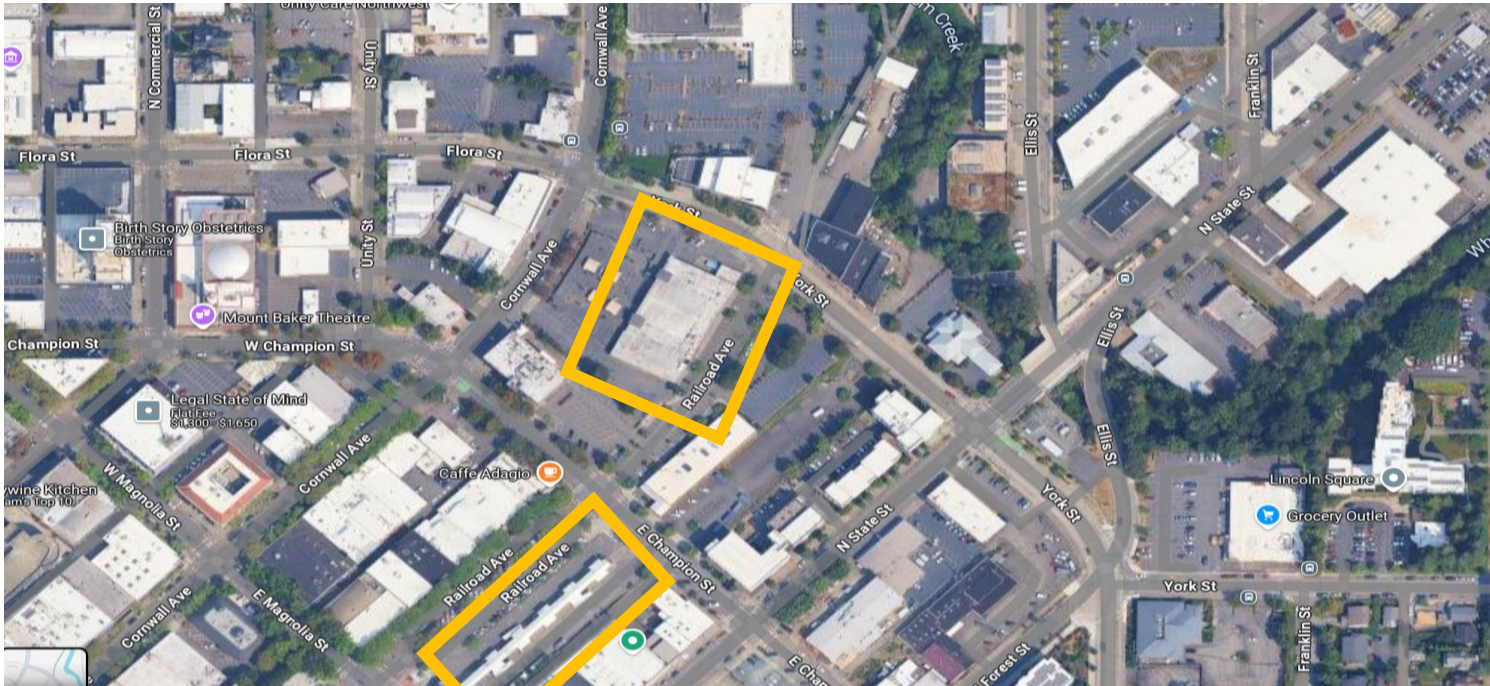
- Complex problems
- Prove value
- Non-siloed thinking
- Innovate
- Partner



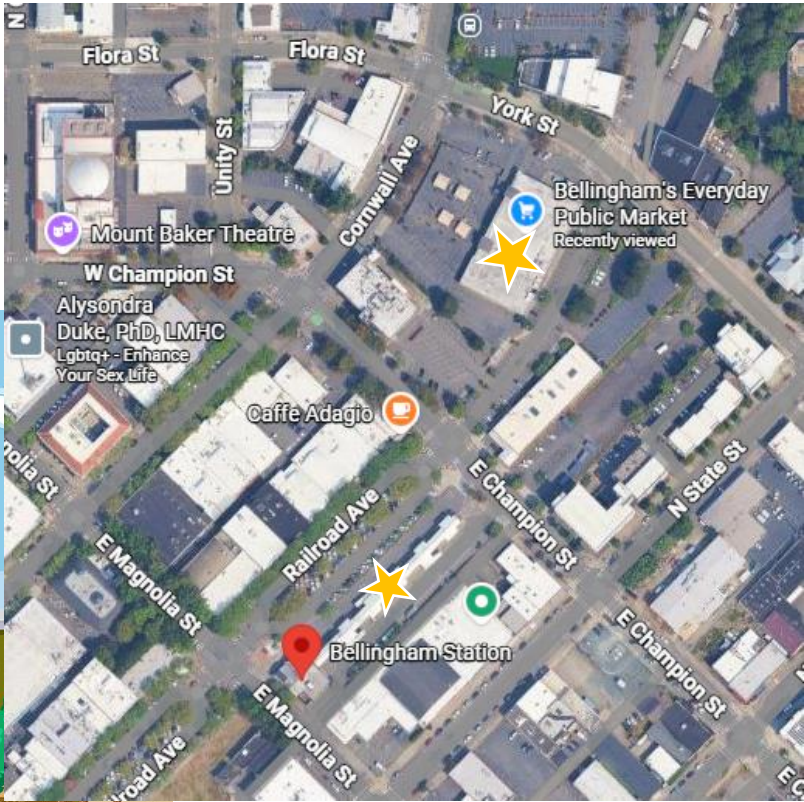
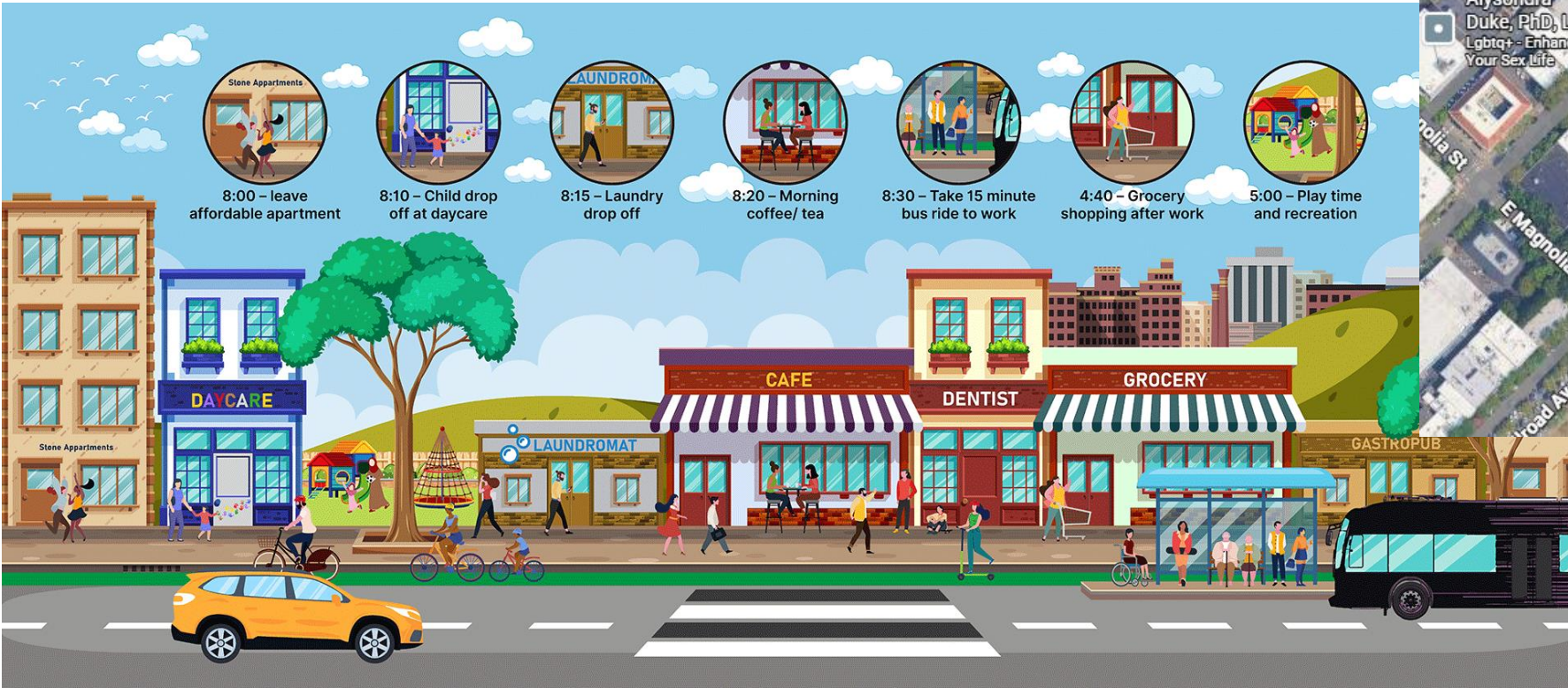
Transit friendly affordable housing at Lynden Station



Transit Oriented Development - Bellingham Station



Transit Oriented Development - Bellingham Station



WTA's Transit Access Fund



WTA's Transit Access Fund

Underway

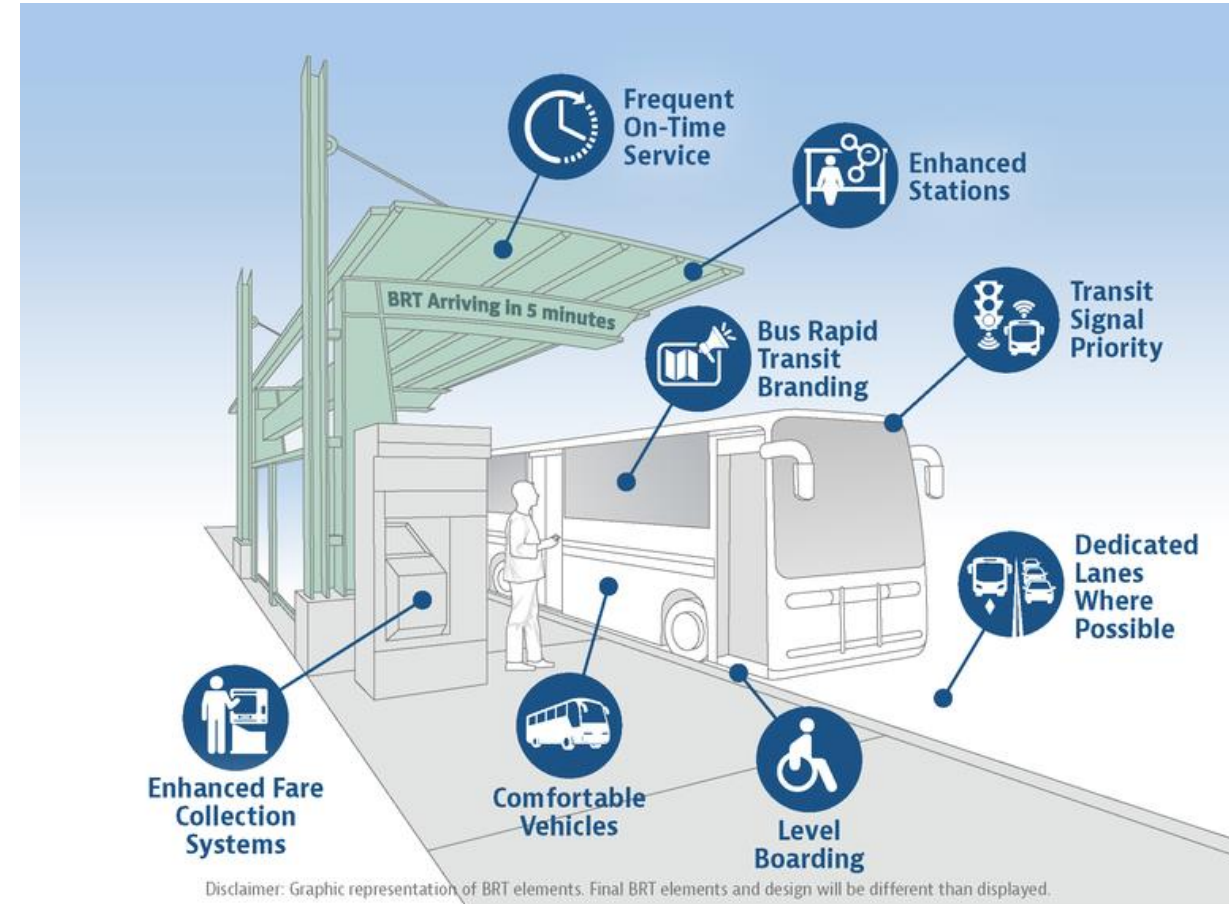
- City of Lynden – Bradley Road shared path
- Whatcom County – Accessibility improvements to Van Zandt Community Hall
- Port of Bellingham – Secured bike parking
- City of Ferndale – Wayfinding
- City of Bellingham – Woburn and Texas Street bicycle/pedestrian improvements

Completed

- City of Nooksack – sidewalk
- Lummi Nation – shelters and bike improvements

Rapid Transit

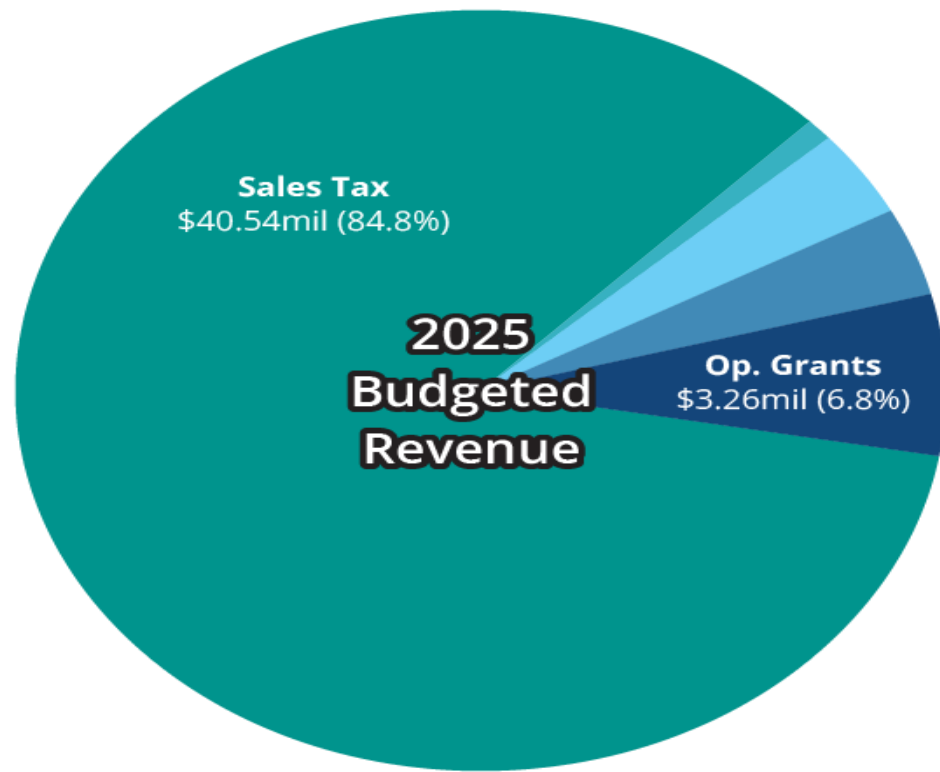
- **Shorter Waits:** More frequent buses
- **Faster Travel Times:** Fewer stops and reduced traffic delays
- **Improved Stop Amenities:** Real-time info, upgraded shelters, off-board payment
- **More Reliable Service:** Reduced chokepoints and increased efficiency
- **Improved Connections:** Smarter route alignments
- **Expanded Hours:** More early morning and late night trips





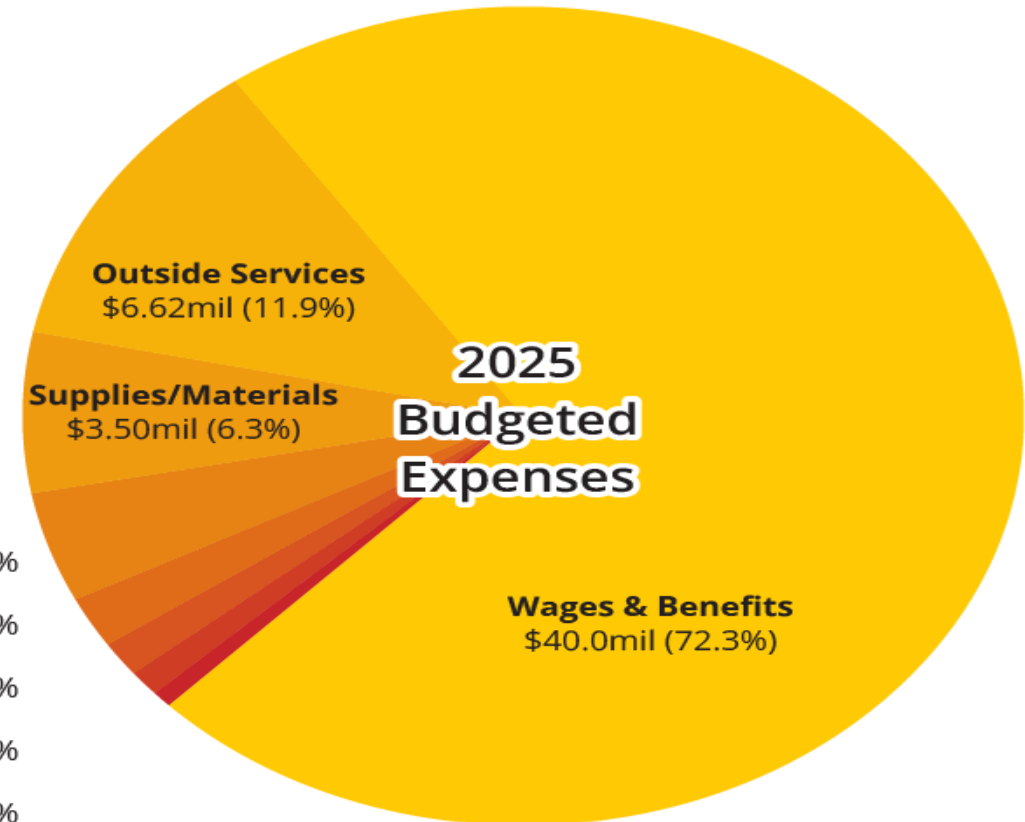
THANK YOU

BACKUP SLIDES



Other	\$0.46mil	1.0%
Fares	\$1.77mil	3.7%
Investments	\$1.80mil	3.8%

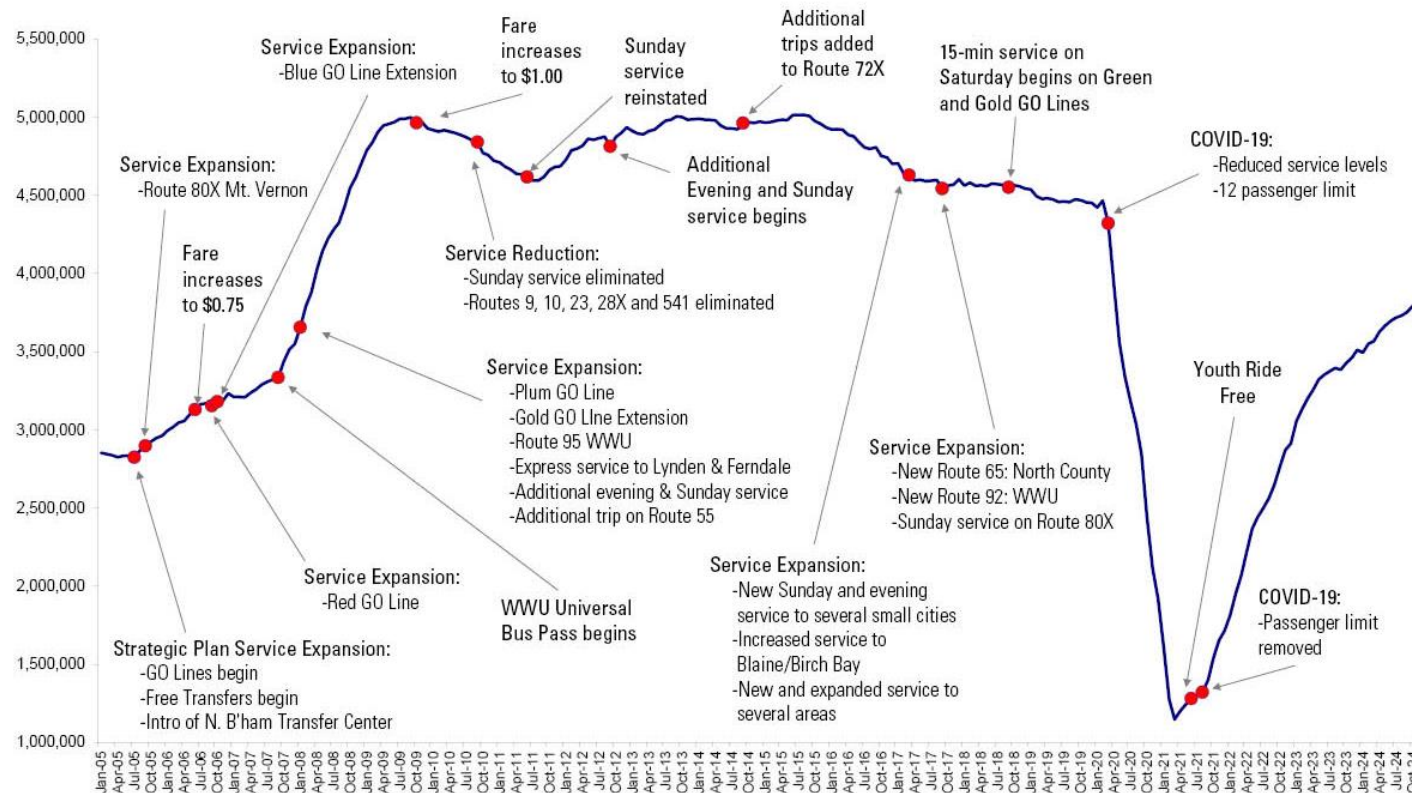
Fuel	\$2.42mil	4.4%
Insurance	\$1.12mil	2.0%
Utilities	\$0.78mil	1.4%
Edu., meetings, travel	\$0.56mil	1.0%
General	\$0.38mil	0.7%



Community impact, by the numbers

Boardings (2005-2024)

data points equal the sum of previous 12 months



FIXED ROUTE	2022	2023	2024
Boardings	2,913,033	3,510,911	3,760,005
Revenue Hours	157,245	155,815	156,587

