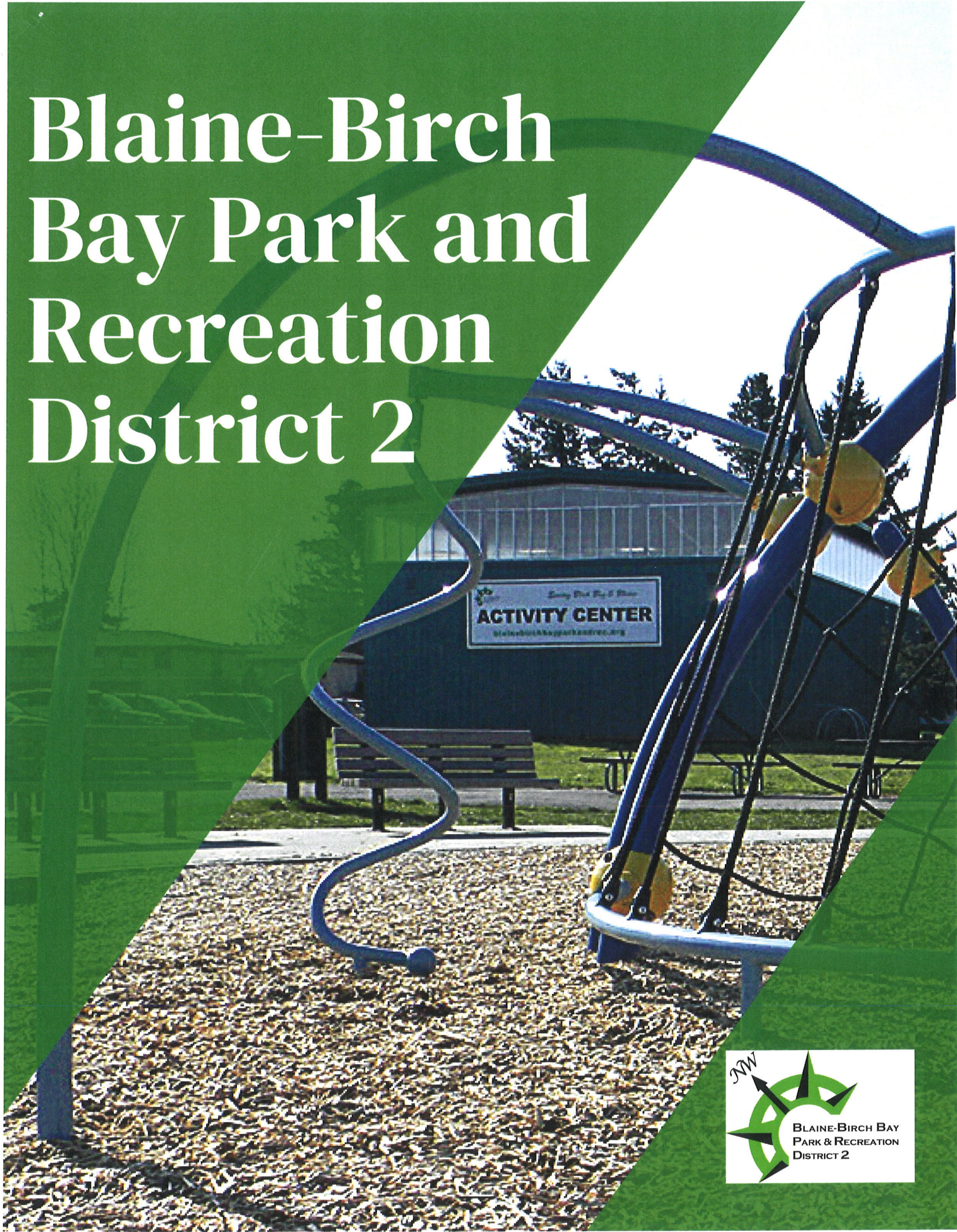


Blaine-Birch Bay Park and Recreation District 2



Enjoy the Fun of Play
ACTIVITY CENTER
blainebirchbayparkandrec.org





The Blaine - Birch Bay Park and Recreation District 2 serves Blaine and Birch Bay,



Group Fitness Classes

Zumba® Fitness, Pound®, Get Fit, Early Bird, Barre.. From 5 in the morning to 7 PM at night, our team of instructors offers fitness classes of all kinds, accessible to all.

Because we understand that it can be hard for parents to carve time away from their little ones to work out, we offer free childcare during some of our classes!



Yoga, Stretching, and Meditation

Yoga, Qigong & Meditation, and Restorative Stretch help you lower stress and anxiety, increase focus, and improve balance and flexibility. These classes are perfect for all skill levels.



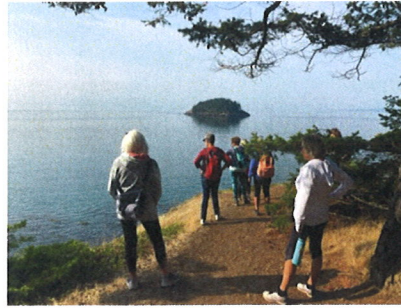
Pickleball

Pickleball has increased in popularity over the years. It is a sport that combines many elements of tennis, badminton and ping-pong. Played both indoors or outdoors. BBAC has three outdoor courts available during the summer months. For the rest of the year, the gym hosts two courts. Pickleball is available six days a week at the Birch Bay Activity Center.



Hikes

The Pacific North West has some of the best hikes in the nation. During the summer, BBBPRD2 offers hikes throughout the area. Participants start the hike by being transported to the site in our red bus. Hikes are labeled by difficulty. Snacks, laughter, and posing for pictures are a must on each adventure.



Junior Golf Camps

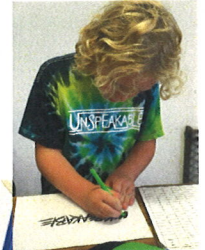
Youth learn the fundamentals of the short game, full swing with irons and driver. They learn to play on a practice area and the course. During the on-course instruction of each class, topics such as golf etiquette, course management, the history of golf, and the rules of golf are covered.



Kids Time

After School Kids Time is held Mondays, Wednesdays, and Fridays. Youth can participate in hands-on activities and are allowed unstructured playtime in the gym. Transportation from the Blaine Schools is provided for a small fee.

During the summer, Open Gym is available two to three times a week so families with youth can participate in games and activities.



Our home is located at Bay Horizon Park in Birch Bay

Blaine-Birch Bay Park and Recreation District 2
 (360) 656-6416
www.bbbprd2.com



Annual Events and Partnerships

Birch Bay Chamber – Sand Sculpture Competition, Kite Making & Flying, Rollback Weekend, Discover Birch Bay Days, Bike Safety Day, and Trick or Treat on the Berm.

Blaine - Wings Over Water Birding Festival, Maritime Festival Drayton Harbor Days, Pirate Daze, and Holiday Harbor Lights Dash Festival.

Whatcom Conservation District - Run with the Chums

Pirate Daze



Splash Days



Holiday Harbor Lights Dash Festival.





DISTRICT PROJECTS ACCOMPLISHED

Whatcom County Park

- Gym restoration – gym floor was resurfaced
- A new surface was put on the existing basketball court at Bay Horizon Park

State Parks

- Birch Bay State Park - Partnered to purchase playground equipment

City of Blaine - Inter-local Agreements & Partnerships

- Hughes Bayview Park - enhancement Peace Portal Community Trail
- Marine Park - birding shelters, new and repair Dakota Creek - kayak launch
- Salishan Park – seasonal restroom facilities
- Marine Park Playground and Equipment
- Trails – Purchase property easements for trails between Lincoln Road and Drayton Harbor Road.



Community Projects

- Blaine Senior Center - exercise equipment
- Drayton Harbor Maritime - Sailing School & Sailboat Restoration
- Blaine Boys & Girls Club - “Teach Me to Golf” program
- Blaine Youth Baseball - program support for the Minors & Pony League
- Grateful Dogs Unleashed - support for the dog park
- Blaine School - Drama program, Wrestling Club, Girls Basketball, Technology Student Association.
- Blaine and Birch Bay - Cub Scouts, Boy Scouts, and Girl Scouts



Community Funding

The District assists organizations in their recreation and leisure activities that are located in the Blaine/Birch Bay area. In 2021 we donated \$30,293.20 for youth programming.





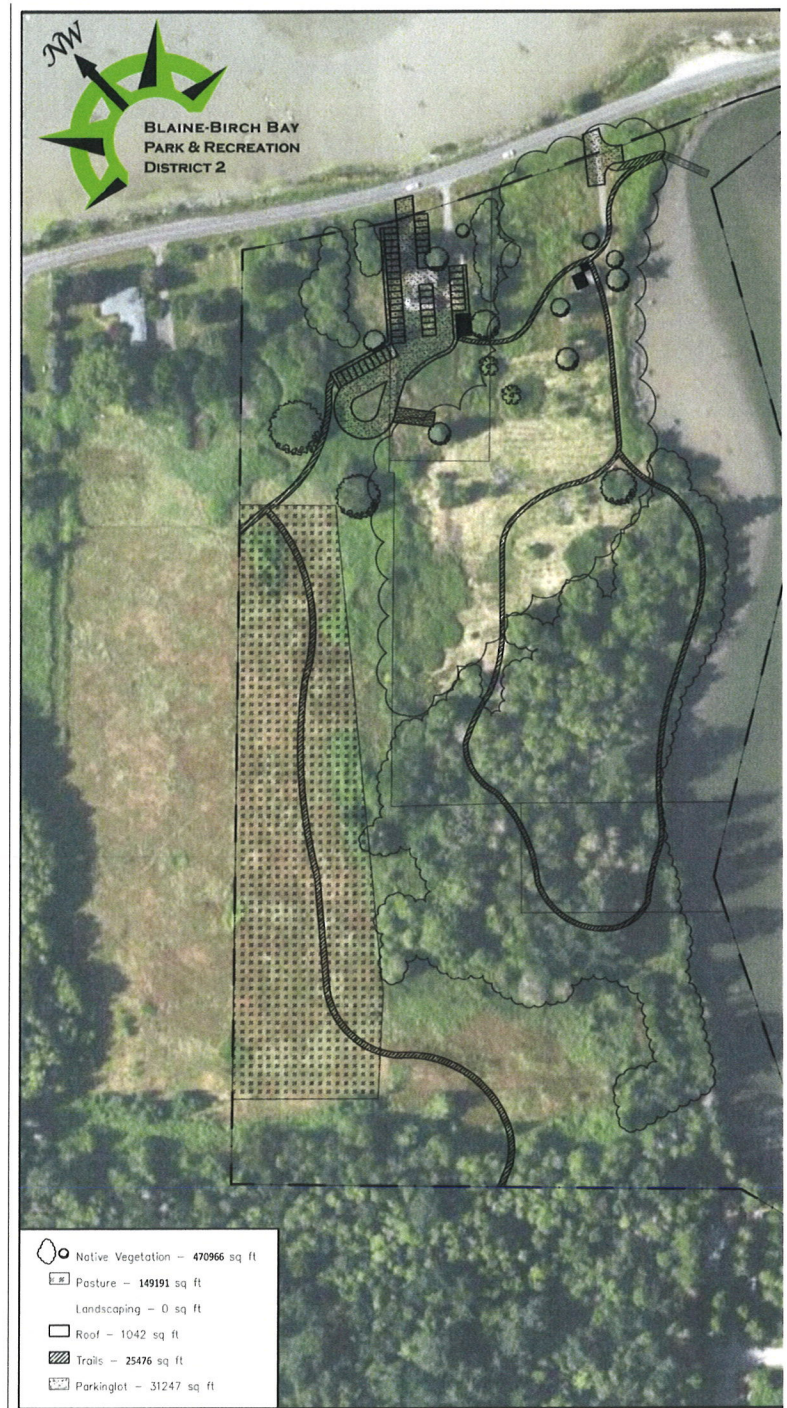
California Creek Estuary Park

Park Will Include

- 31 protected acres
- Parking lot
- Restrooms
- Park steward accommodations
- 3-boat kayak launch
- ADA trail with interpretive kiosk
- 1 Mile of Off-Road Trails
- Picnicking

Future Goals

- Trails eventually will go from Lincoln Road to Drayton Harbor Road so bicycles and pedestrians can avoid Drayton Harbor Road.
- Part of our future development plan is to have a safe bike and pedestrian routes from Blaine to Birch Bay.



Thank you

Blaine-Birch Bay Park and Recreation District 2

7511 Gemini Street
Blaine, @A 98230

For more information email
info@bbbprd2.com
or called
(360) 656-6416

