

Lynden Wastewater Treatment Plant

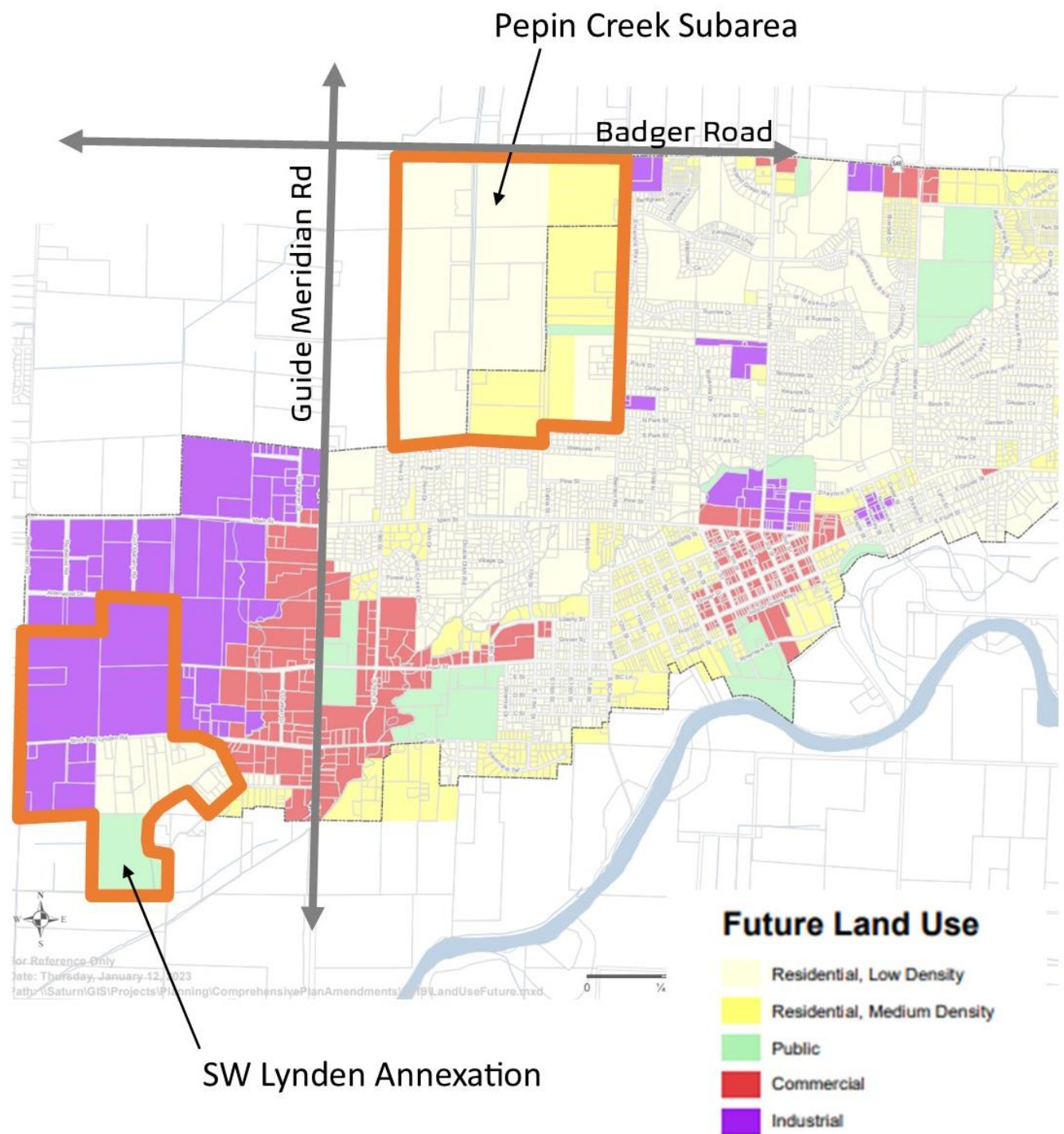
process improvements to
expand capacity, remove
nutrients, reduce energy
consumption, add resiliency



A multi-year upfit that

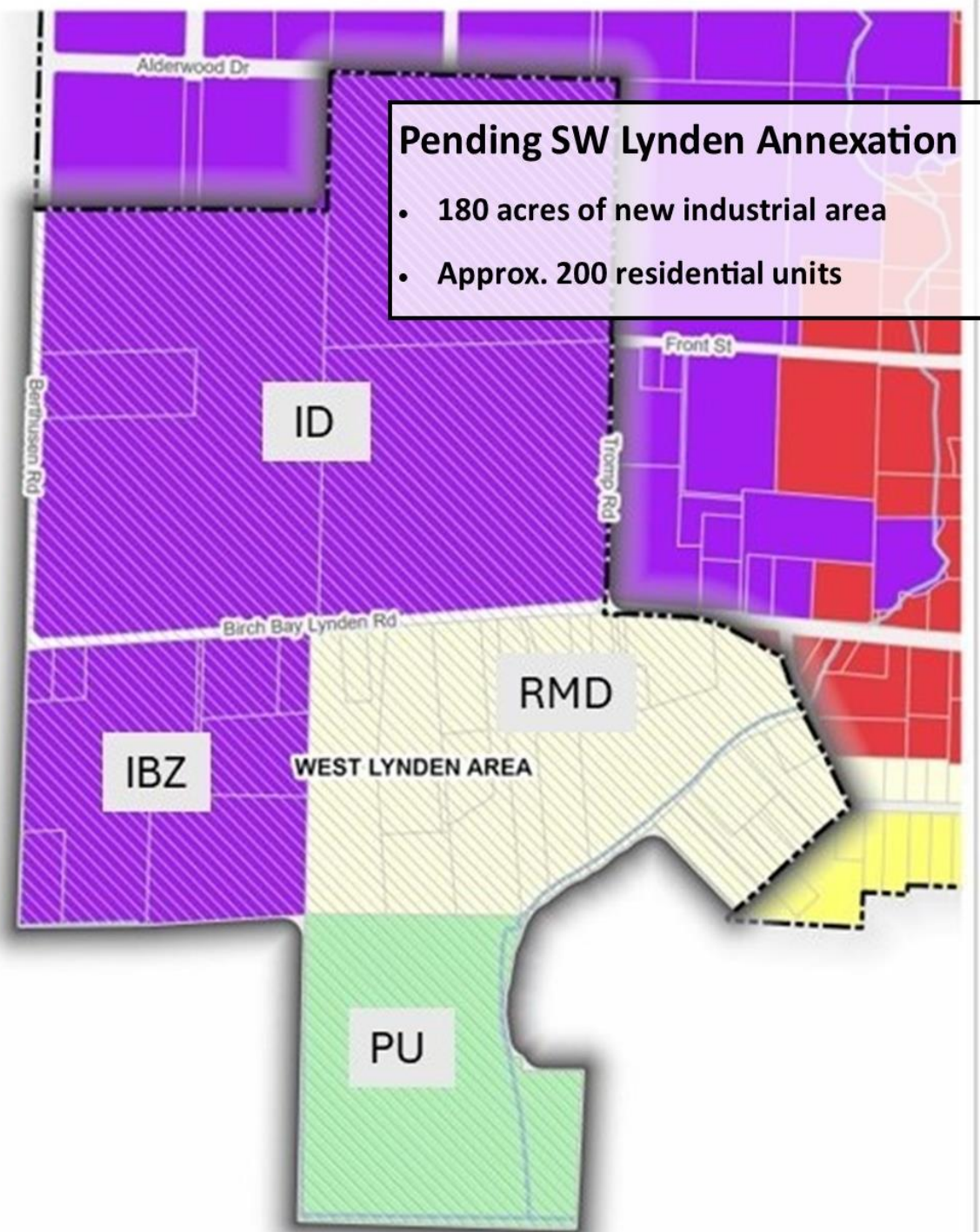
- 1) Handles GMA population growth mandates
- 2) Accommodates new “wet” industries
- 3) Adds nutrient removal to process train
- 4) Reduces energy consumption
- 5) Replaces aged infrastructure

Growth in Lynden



A Growing Industrial Base

between 388 and 944 new industrial jobs by 2045



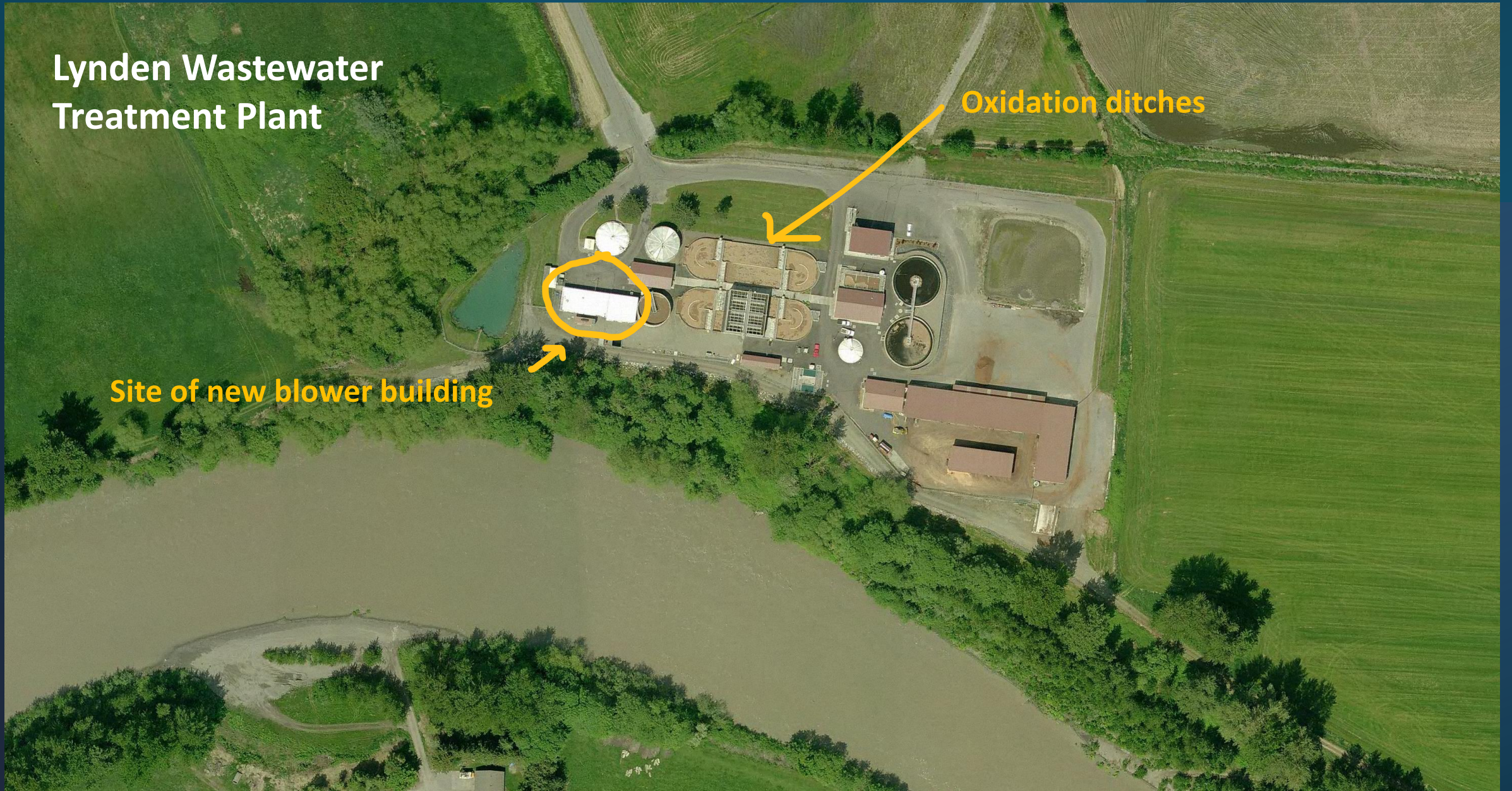
Economic Development in West Lynden

- ❑ [Alliance Freeze Dry](#). \$40M 220,000 ft² freeze dried pet food processing plant. Fully permitted and under construction. 77 employees.
- ❑ [Lynden Door Trucking](#). 35,000 ft² mechanic shop. SEPA completed, civil and bldg Permits submitted. 2024 start. 10 employees.
- ❑ [Open Windows](#). Finished window pane manufacturing facility. Building application received, plan check fee paid, review in process. 10 employees.
- ❑ [Premier Packing](#). 194,000 ft² frozen fish processing plant. SEPA review concluded and Conditional Use granted. Building application pending. 50 new employees.
- ❑ Berry Hill. \$20M frozen berry processor. On hold. 40 employees.
- ❑ BC Frozen Foods. Frozen produce processor. Preapplication.
- ❑ [Structure Craft](#). Wood beam manufacture. Preapplication.
- ❑ Everblue, Inc. Blueberry processor. Preapplication.

Lynden Wastewater Treatment Plant

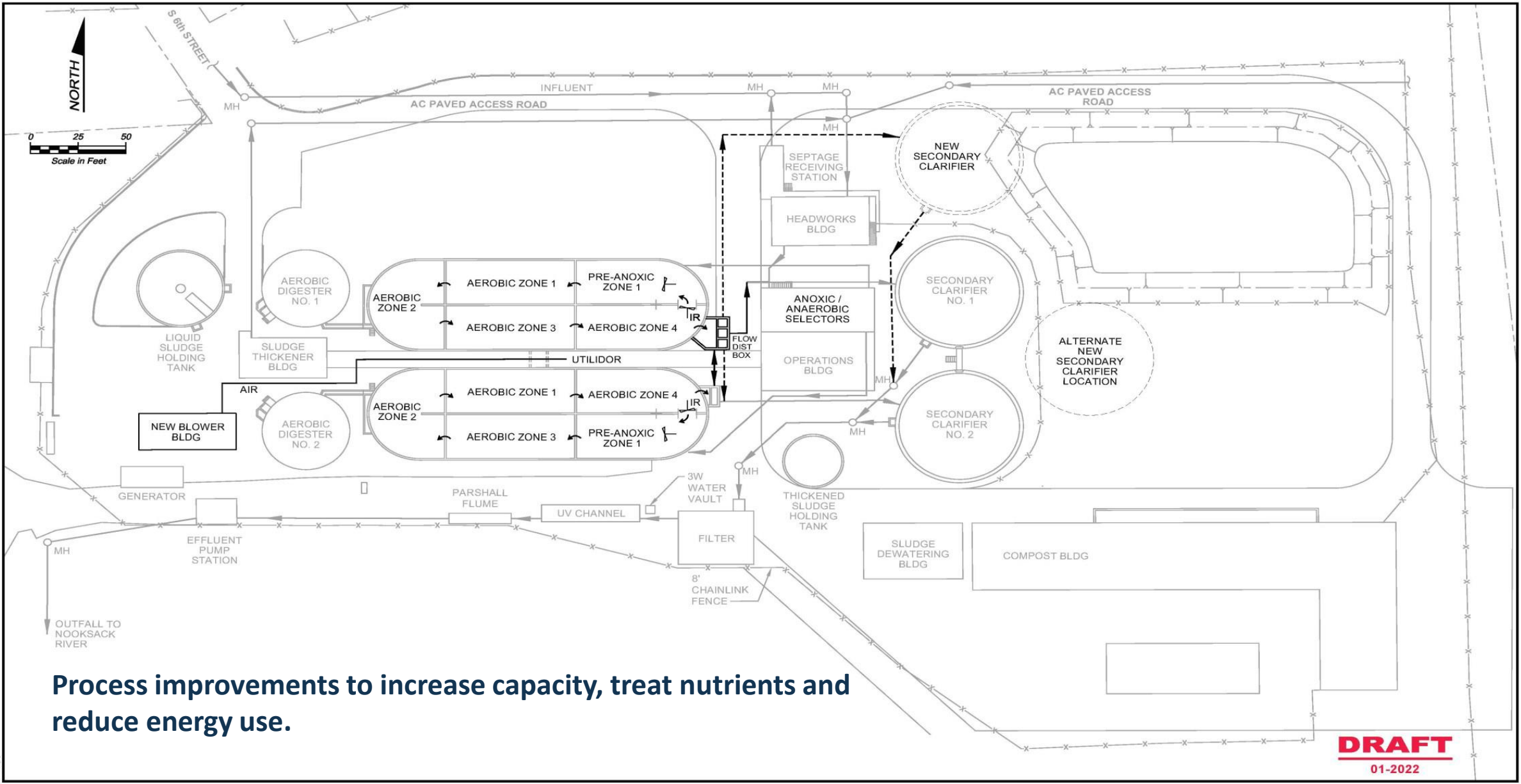
Oxidation ditches

Site of new blower building



Project phases

- 1) Relocate maintenance building to make room for new blower system
 - \$5M Public Works Trust Fund loan
 - breaking ground August 5th, 2024
- 2) Retrofit oxidation ditches*
 - \$18M State Revolving Fund Loan, \$2M EDI grant/loan
 - to construction May, 2025
- 3) Improve solids handling system
 - local funds, 2027
- 4) Add third clarifier
 - unfunded, 2030+



Process improvements to increase capacity, treat nutrients and reduce energy use.

DRAFT
01-2022



EDI Request

- 1,333,333 grant/\$666,667 loan for the early purchase of **critical long-lead time equipment** to meet construction deadlines and help fund final design.
- Industrial electrical equipment has 12 to 18 mo lead time
- Includes Variable Frequency Drive motor controllers and blowers that must be delivered at specified time during 2025 construction
- **Can't use SRF loan.** Project is on final DOE funding list, but contracts will not be let until November.
- City has an excellent record of leveraging EDI funds for major infrastructure project and loan service.

expand capacity
remove nutrients
reduce energy consumption
add resiliency

Questions

