

Portage Bay Shellfish Protection District

Shellfish Recovery Plan- 2022 Status Update

Whatcom County Council Natural Resources Committee

September 13, 2022

Shellfish Growing Area Status

2015 & 2016 Downgrades

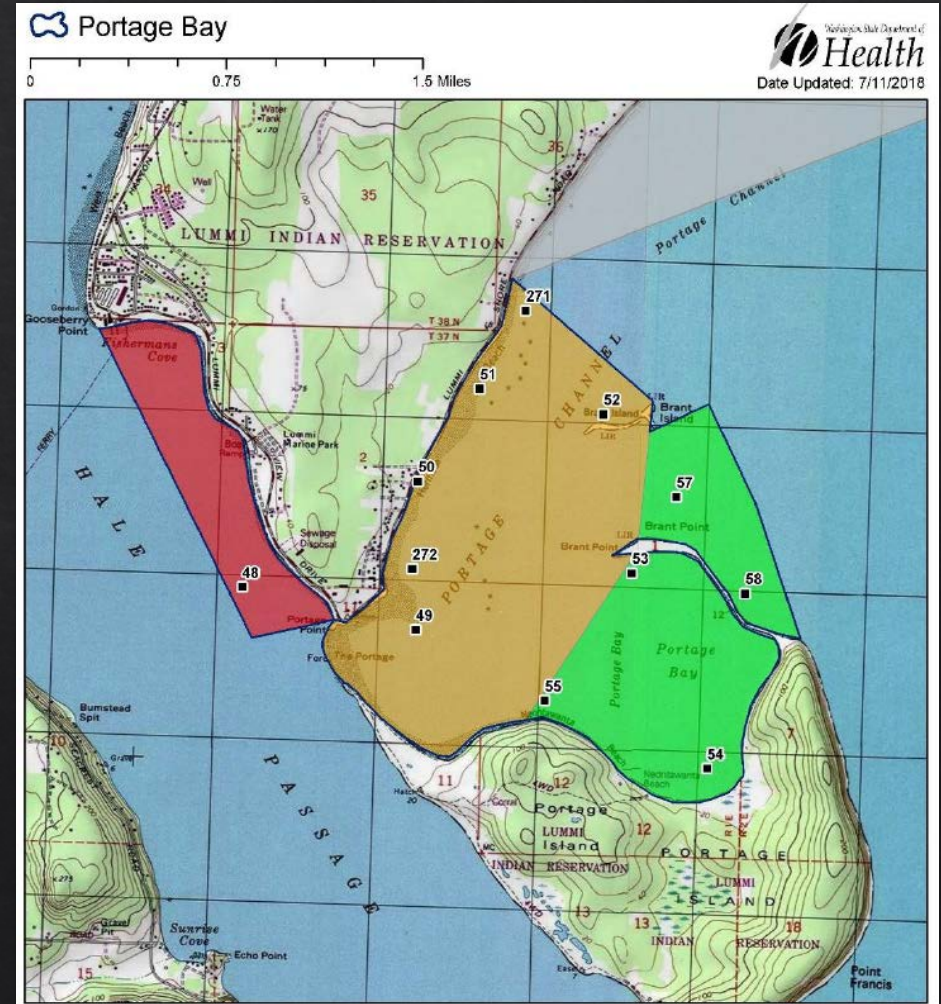
- ◆ Spring Closure (March-June)
- ◆ Fall Closure (October-December)

2019 Upgrade

- ◆ Spring Harvest Restrictions Removed

2022 Extension of Seasonal Closure

- ◆ Fall Closure (September-December)



Shellfish Recovery Plan

- ◆ Advisory Committee Reconvened in 2013
- ◆ Plan Adopted by Council in 2015
- ◆ Recommendations Focus on County Programs
- ◆ Work is Accomplished through Partnerships with Other Organizations



Recovery Plan Implementation



Whatcom Clean Water Program

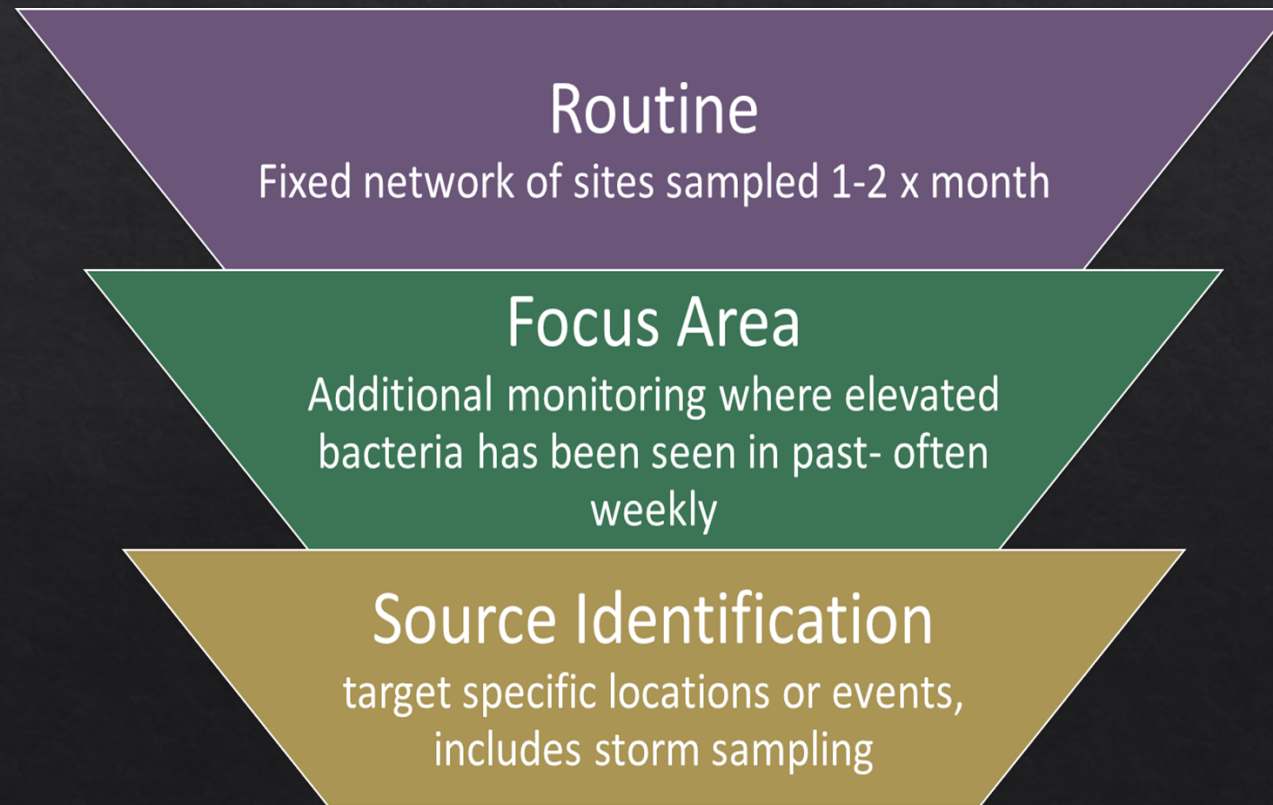
- ◇ Local, State, Tribal Federal Partners

Whatcom County Pollution Identification and Correction (PIC) Program

- ◇ Data Collection and Analysis
- ◇ Community Outreach and Engagement
- ◇ Landowner Technical and Financial Assistance
- ◇ Regulatory Backstop

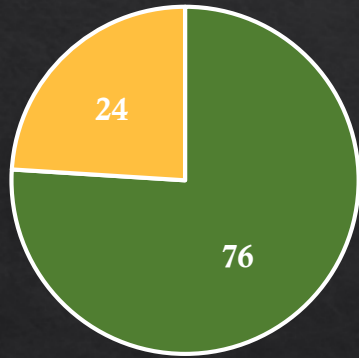
Water Quality Monitoring

Tiered Approach

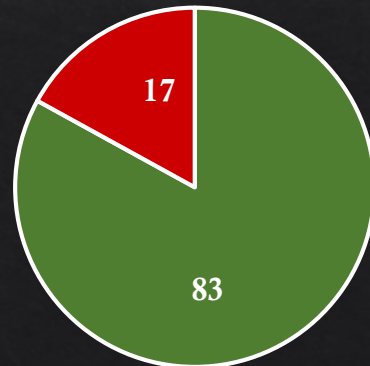


Water Quality Monitoring- Next Steps

Improvement

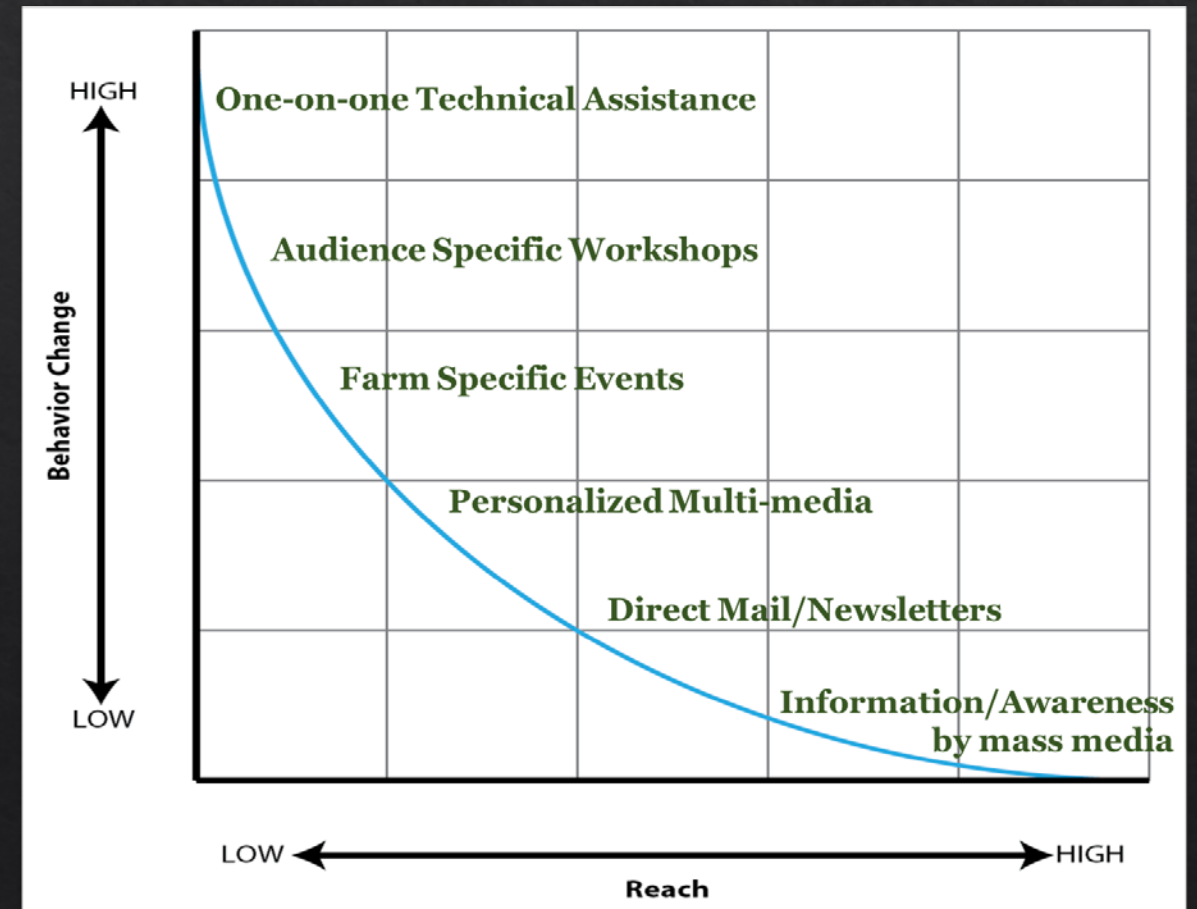


Exceeding Benchmarks

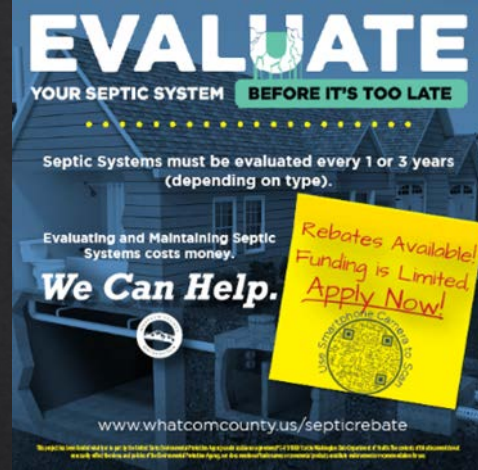


- ◆ Continue Comprehensive Monitoring and Follow Up
- ◆ Research Critical Factors of Closure Season
- ◆ Track Effectiveness of Source Identification Techniques
- ◆ Continue Coordinated Monitoring with Cities

Community Engagement



Community Engagement



- ◆ Continue Outreach Emphasizing Community Solutions
- ◆ Expand Peer to Peer Networking
- ◆ Expand Stormwater Outreach and Support for Voluntary Actions
- ◆ Continue Educational Programs for Dairies and Livestock

Agricultural Sources

Dairies

- ◆ Regular Inspections by Department of Agriculture

Non-Dairy Agriculture

- ◆ Tiered Approach in Focus Areas
 - ◆ Landowner and Operator Outreach
 - ◆ Technical and Financial Assistance
 - ◆ Regulatory Backstop

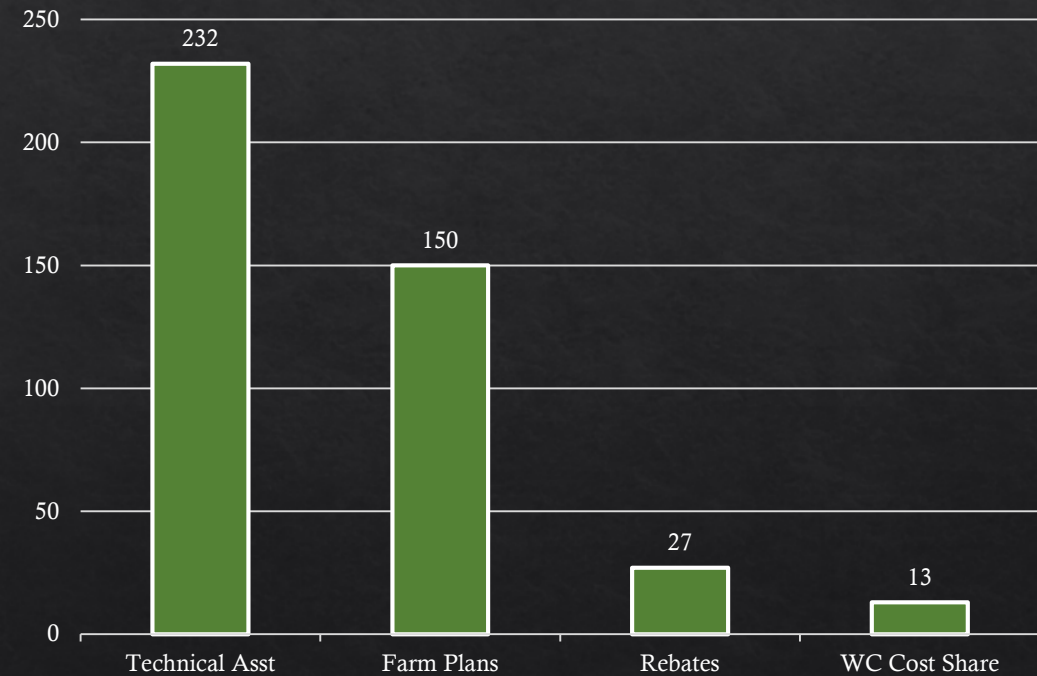


Agricultural Sources

Conservation District

Whatcom Conservation District

- ◆ Confidential and Non-Regulatory
- ◆ Site Assessments and Farm Plans
- ◆ Financial Assistance and Incentives

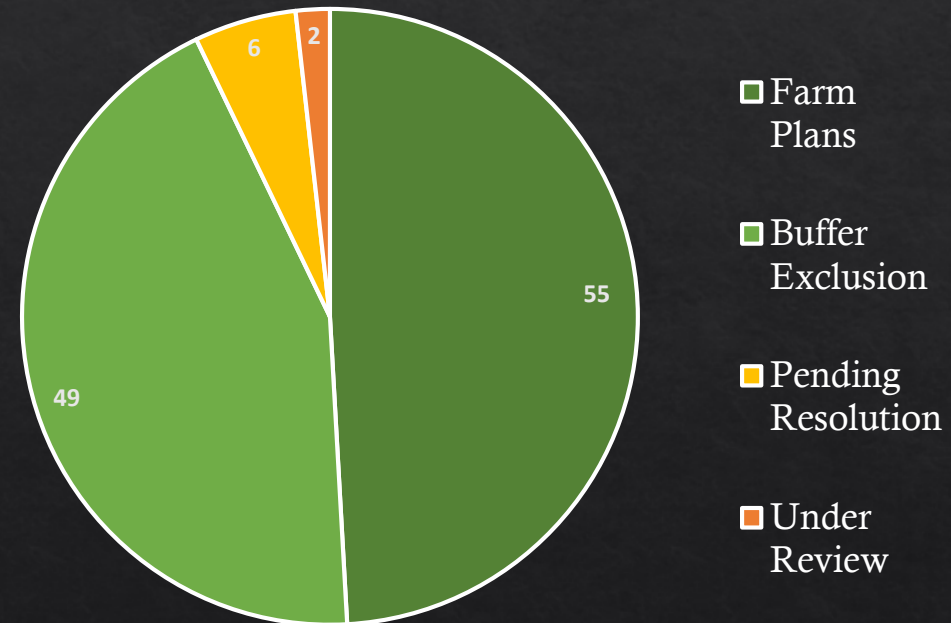


Agricultural Sources

CPAL Program

Conservation Program for Agricultural Lands

- ◇ Flexibility for Buffers
- ◇ Long-Term Monitoring



Agricultural Sources- Next Steps

- ◆ Adequate funding for agricultural technical assistance.
- ◆ Options for evaluating sites that cannot be observed from road right-of-way.
- ◆ Research financial assistance programs outside of county funding.



Stormwater Sources

- ◇ Partnerships with Lynden and Ferndale
 - ◇ Monitoring
 - ◇ Community Outreach
 - ◇ Other Opportunities?
- ◇ Riparian Assessments and Restoration

45 CREP Projects

 26.5 Stream Miles

 139,891 Plants

Wastewater Treatment Plants

- ◆ Cities of Everson, Lynden, Ferndale
- ◆ Reports Regularly Submitted to Department of Ecology
- ◆ Upgrade to City of Everson Treatment Plant Completed
- ◆ Challenges Associated with 2021 Flooding

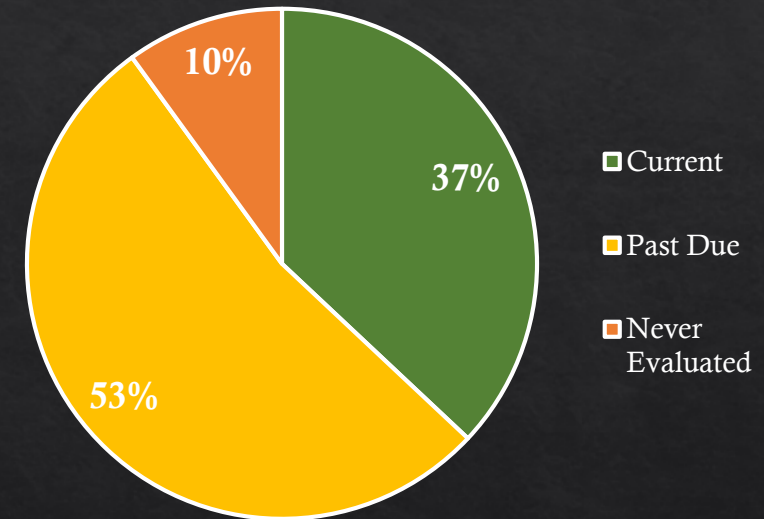


On-Site Sewage Systems

Marine Recovery Area Established 2015

- ◆ Over 14,000 Systems
- ◆ Operation and Maintenance Program
- ◆ Financial Assistance

OSS Evaluations



445 Rebates
33 Low Interest Loans

WWTP and OSS- Next Steps

- ◆ Provide Support for Treatment Plant Upgrades if Needed
- ◆ Research Need for Financial Assistance for Maintenance and Repairs/Replacements of On-Site Sewage Systems



Looking Forward

- ◆ Extend Sunset Date
- ◆ Recognize Grant Funds are Specific to Time and Tasks
- ◆ Develop Scaled Budget for Sustainable Program
- ◆ Border Water Quality & Transboundary Partnership
- ◆ Lynden Sewer Hookup Fee Waiver
- ◆ Subwatershed Representation
- ◆ Strategic Approach to Climate Change Impacts





Thank You

Christine Woodward, Chair
Portage Bay Shellfish Advisory
Committee

Erika Douglas
Public Works Natural Resources

Photo Courtesy of Lummi Nation