



BBWARM
Birch Bay Watershed and Aquatic
Resources Management District

BBWARM ADVISORY COMMITTEE DISCUSSION WITH WHATCOM COUNTY COUNCIL

June 2026

BBWARM Purpose

- Reduce stormwater impacts (localized flooding/drainage/erosion)
- Protect and improve water quality and aquatic habitat



Background

- **Community Involvement**
 - ▣ Community-initiated effort to address water quality problems and flooding begins 1999
 - ▣ Response to State listing Birch Bay as threatened shellfish area in 2003



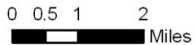
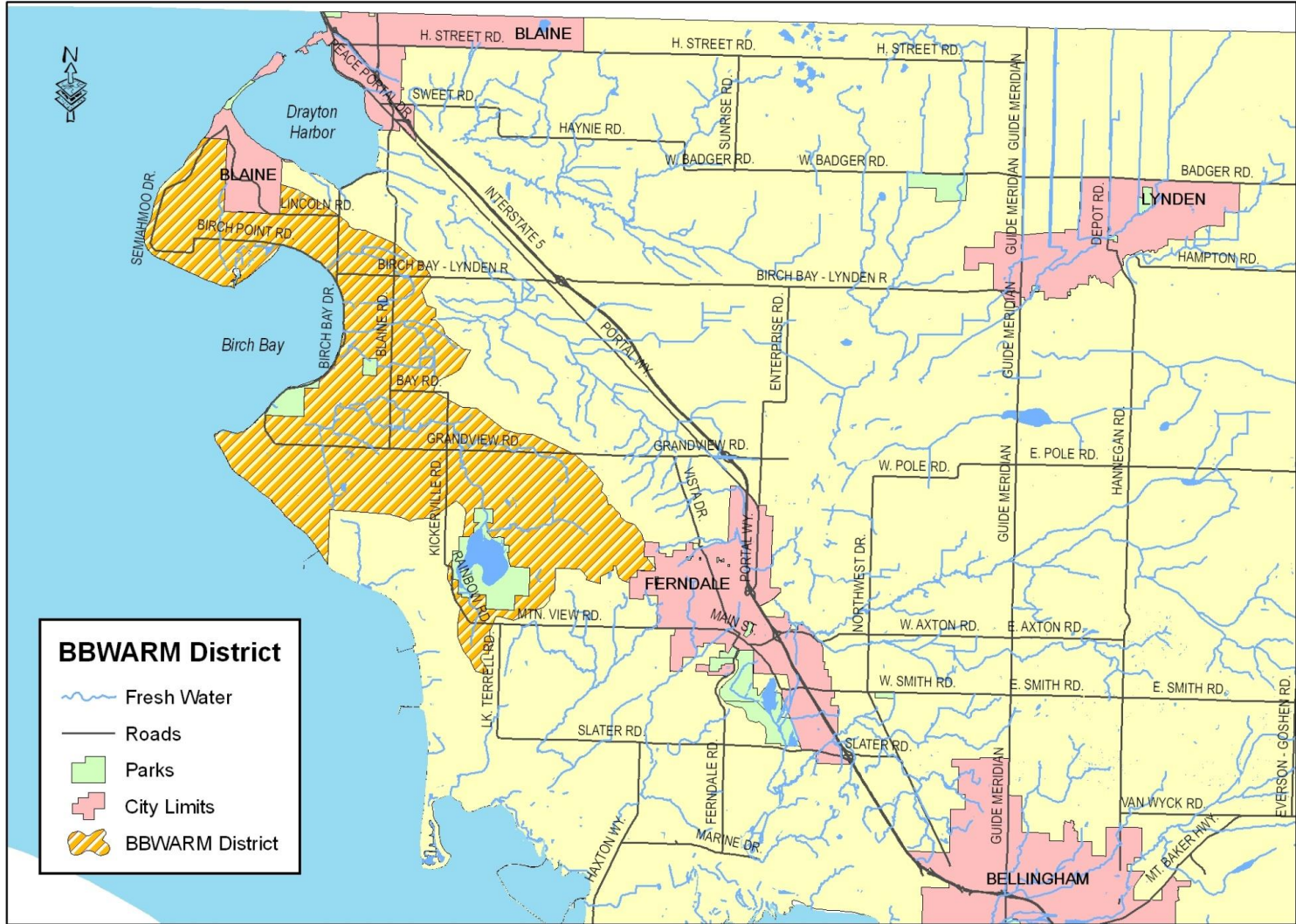
BBWARM Background

□ Milestones

- 2001 - Birch Bay Steering Committee formed
- 2004 - Birch Bay Community Plan developed
- 2006 - Comprehensive Stormwater Plan completed
- 2007 - BBWARM District (FCZD subzone) established
- 2008 - Advisory Committee & Funding Resolution adopted
- 2009 - Fees collected, staff hired & work plan developed
- 2010 - Full program development & implementation



BBWARM District



Core Program Areas

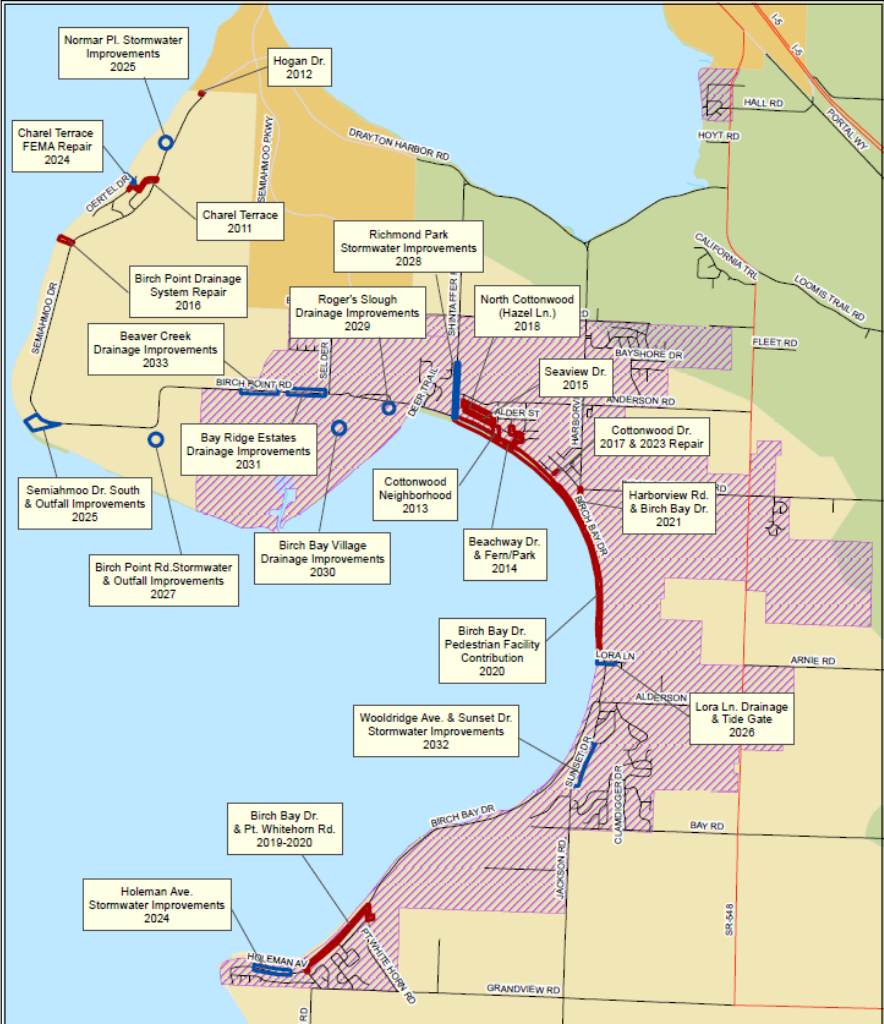
- Administration & Program Development
- Capital Improvement Projects
- Maintenance, Small Works & Special Studies
- Habitat Improvement
- Education & Outreach
- Water Quality Monitoring

Capital Improvement Projects

Getting stormwater to the bay without causing problems

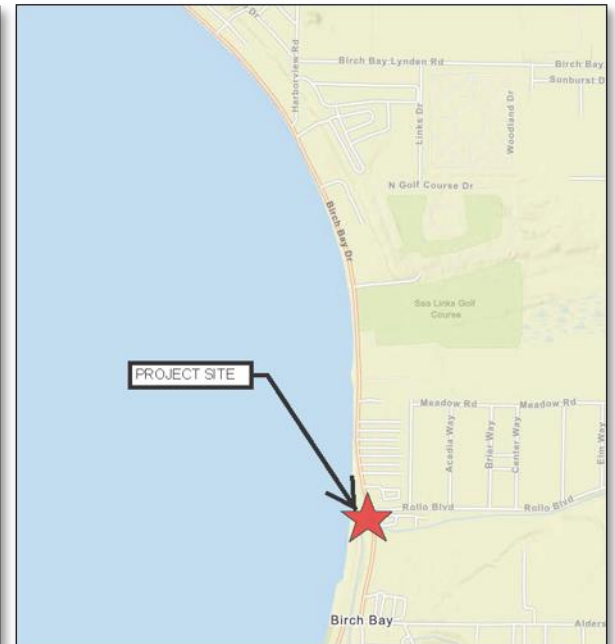
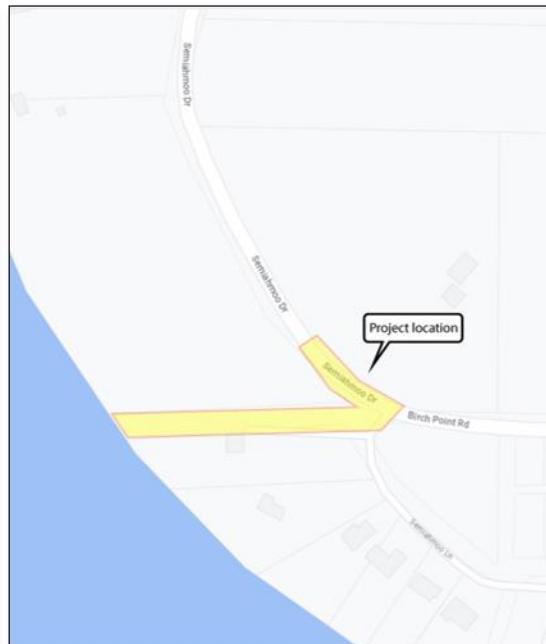
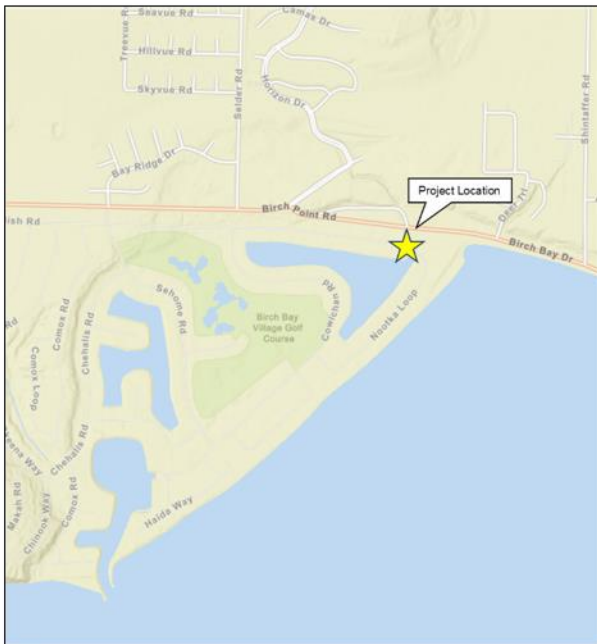


Past and Future BBWARM Capital Projects



Capital Improvement Projects – Coming Soon

- Semiahmoo Drive South & Outfall Improvements -2027
- Birch Bay Village Stormwater Improvements - 2027
- Lora Lane Drainage & Tidegate Modifications - TBD



Maintenance & Small Works

Maximize function of existing public stormwater systems and address small-scale chronic maintenance and repair projects



Culvert Replacement & Drainage Repair



Roger's Slough Log Cleanout



Habitat Improvement Projects



*Enhancing salmon and wildlife habitat,
improving water quality and keeping
shellfish beds open*



Terrell Creek Restoration Work Parties



Neighborhood Native Landscaping Program



- Provides homeowners with support and financial assistance to transform their yards into low-maintenance native plant landscapes.
- Goals:
 - Protect water quality and improve habitat.
 - Build community and promote neighbor-to-neighbor outreach
- **By the end of 2026: 75,000+ ft² of lawn converted to native landscaping on 40 properties in Birch Bay.**



BEFORE



AFTER



BEFORE



DURING



AFTER



Education & Outreach

- BBWARM's education and outreach programs seek to **increase public awareness** of stormwater problems and **promote voluntary actions** that reduce stormwater impacts, protect water quality and enhance habitat in Birch Bay.



Outreach Events



□ 13,000+ lbs of trash removed July 5th

□ Annual "Run with the Chums 5K Fun Run

5th of July in Birch Bay

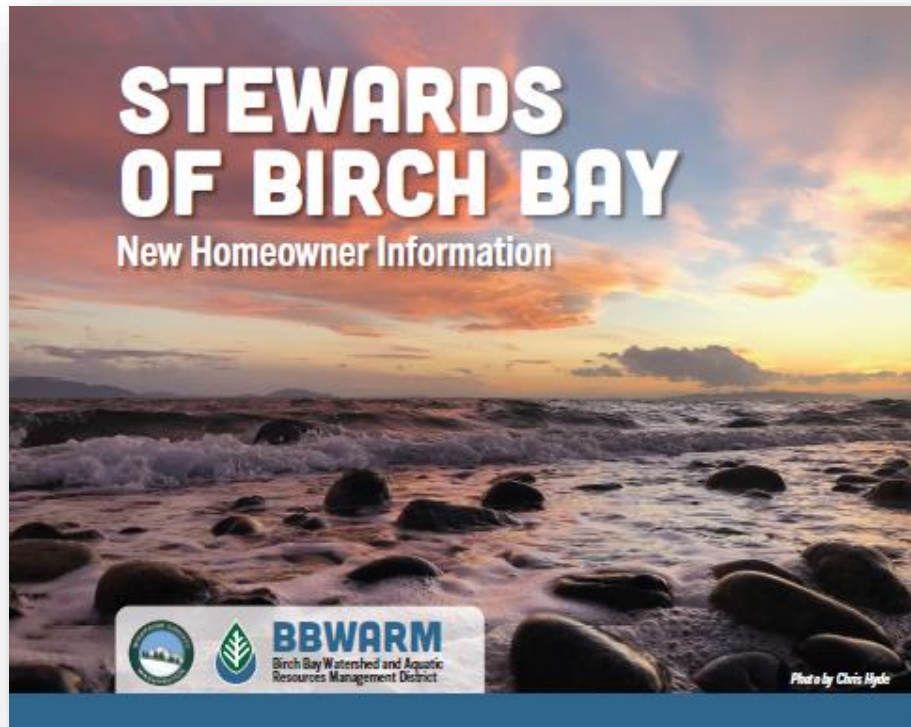
- Over last five years, more than 50,000 pounds of firework debris was removed from shoreline of Birch Bay by volunteers and Whatcom County/BBWARM



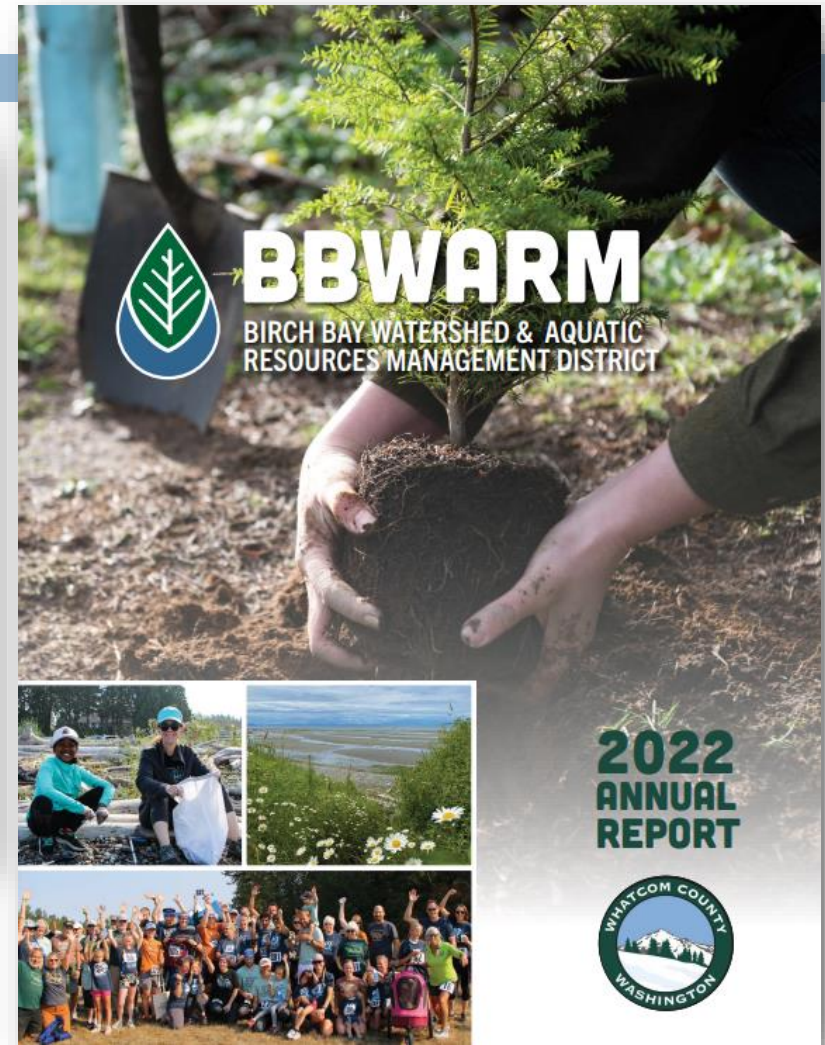
Outreach Campaigns



Reports & Publications



- “Stewards of Birch Bay” is mailed to new Birch Bay residents each year



- Annual Report and Financial Report

Water Quality Monitoring

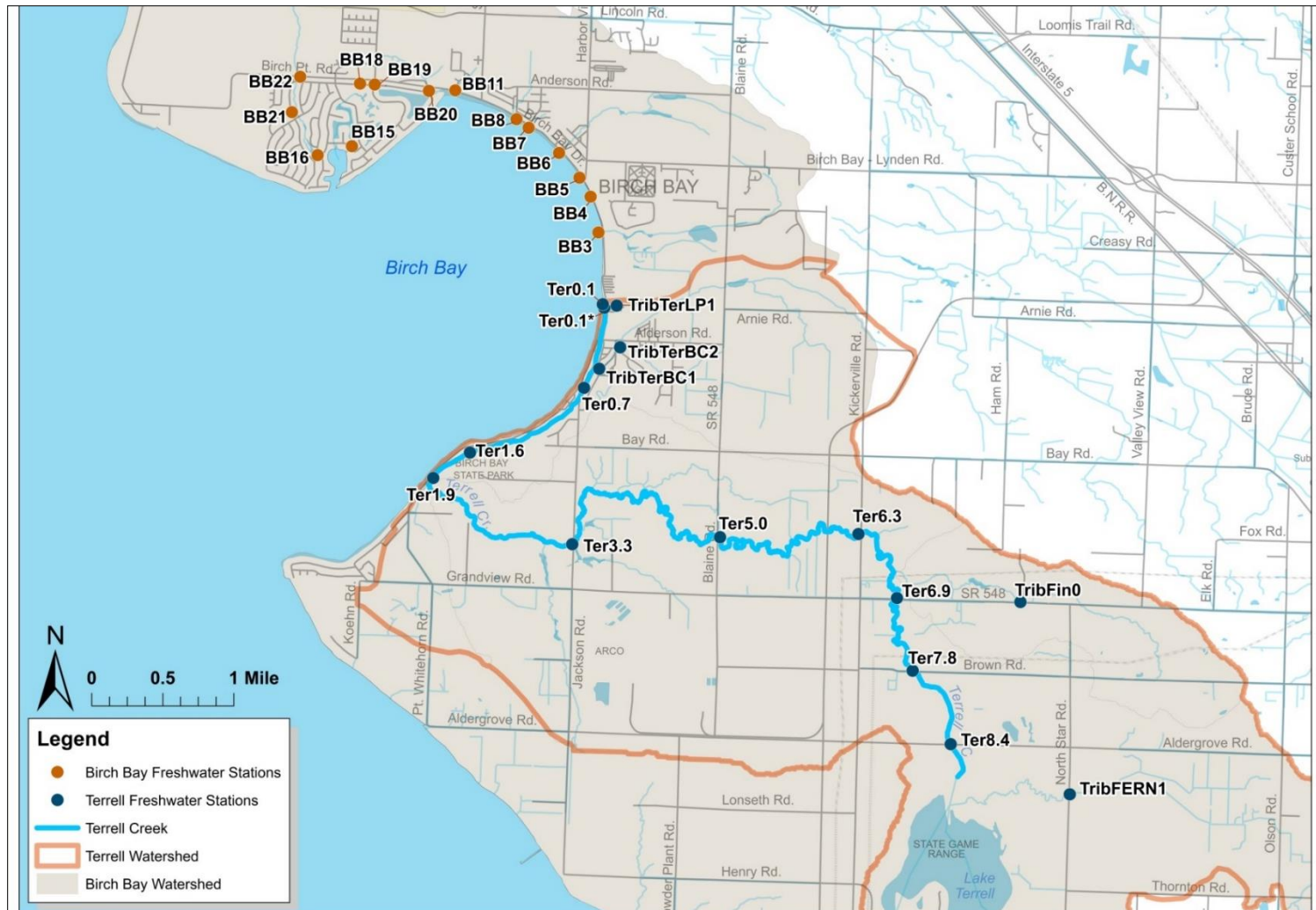
- ▣ Assess current fecal coliform bacteria levels and trends
- ▣ Identify priority areas for WQ treatment and outreach
- ▣ Keep shellfish growing areas open for recreational harvest



Water Quality Monitoring



Birch Bay/Terrell Creek WQ Monitoring Stations



Request to FCZD Board of Supervisors

- BBWARM Advisory Committee requests that REET (and/or Flood funds) continue to be allocated to BBWARM in the next budget cycle
- See letter submitted with agenda packet

Questions?

- Whatcom County Staff:
 - Holly Faulstich, Natural Resource Specialist III
 - HFaulsti@co.whatcom.wa.us, 360-778-6290

- BBWARM Advisory Committee:
 - Jane Mauk, Chair
 - Michael Allan, Sherrie Jarrett-Green, Rebecca Hardie