



Whatcom

CONSERVATION DISTRICT





Presentation Overview

- Whatcom Conservation District
Overview
- Whatcom CD role in County CPAL
Program
- Farm planning process

About Whatcom CD



We are a dedicated team of 19 staff and 5 board members.



We have been worked with farmers, landowners, and residents on a voluntary basis since 1946.



We are funded by grants, other contracts, and a modest rate fee.

Core Program Areas



Who do we work with?

- Voluntary
- WC Planning and Development Services Referrals
- Dept. of Ecology Referrals
- WA State Dept. of Agriculture Referrals

Farm Speaker Series

Whatcom County Goat Farmers Workshop

Thursday, November 15th
6– 8PM

Rome Community Bible Church
2720 Mt Baker Hwy, Bellingham

Goat production can be a valuable part of a sustainable farm! Come hear WSDA goat dairy inspectors and a panel of your farming peers speak about homestead & commercial goat dairying, and meat production.

 RSV? (encouraged): Corina Cheever
ccheever@whatcomcd.org or
360-526-2381 ext. 104



FREE EVENT



Farm Planning Process



Natural Resource Conservation Service (NRCS)

The 9 Steps of the Planning Process

Phase I - Collection and Analysis (Understanding the Problems and Opportunities)

1. Identify Problems
2. Determine Objectives
3. Inventory Resources
4. Analyze Resource Data

Phase II - Decision Support (Understanding the Solutions)

5. Formulate Alternatives
6. Evaluate Alternatives
7. Make Decisions

Phase III - Application and Evaluation (Understanding the Results)

8. Implement the Plan
9. Evaluate the Plan

1. Goals and Objectives

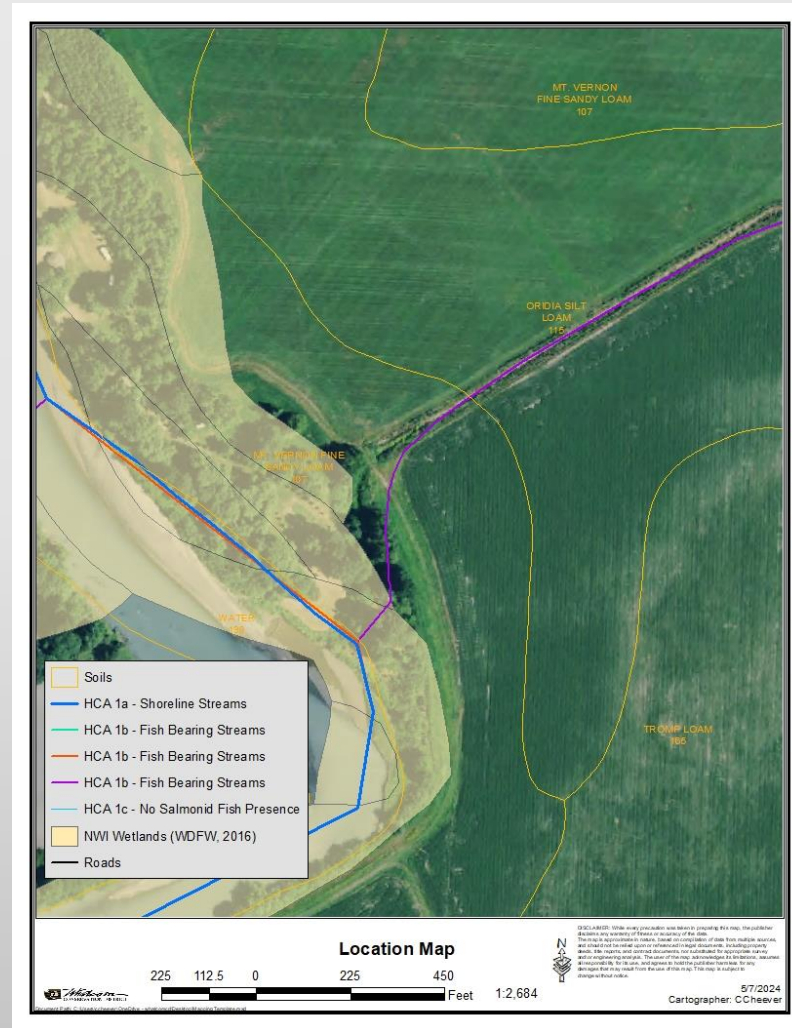
- How long have you been on the property?
- Livestock? Cropping?
- Concerns?
- Current vs Future?



2. Inventory

- Landscape
 - Soils
 - Water
 - Air
 - Plants
 - Animal Inventory
- Critical Areas and Buffers
- Equipment
- Resources

This determines Type 1 or 2 farm plan.



3. Assessment

- Mud
- Manure Management
- Pasture Productivity
- Soil Health
- Irrigation
- Pest Management

Animal	Volume cu ft/day
dairy heifer	1.3
beef cow	1.0
beef feeder	1.0
horse	0.8
swine-sow	1.0
swine-grower	1.0
sheep-lamb	0.6
poultry-layer	0.9



Photo by: Gabriella Mednick, WCD

4. Identifying Best Management Practices

Fencing- Seasonal, Temporary, Exclusion



Identifying Best Management Practices

Heavy Use Area



Identifying Best Management Practices

Roof Water Management



Identifying Best Management Practices

Manure Management- Collection, Storage and Application

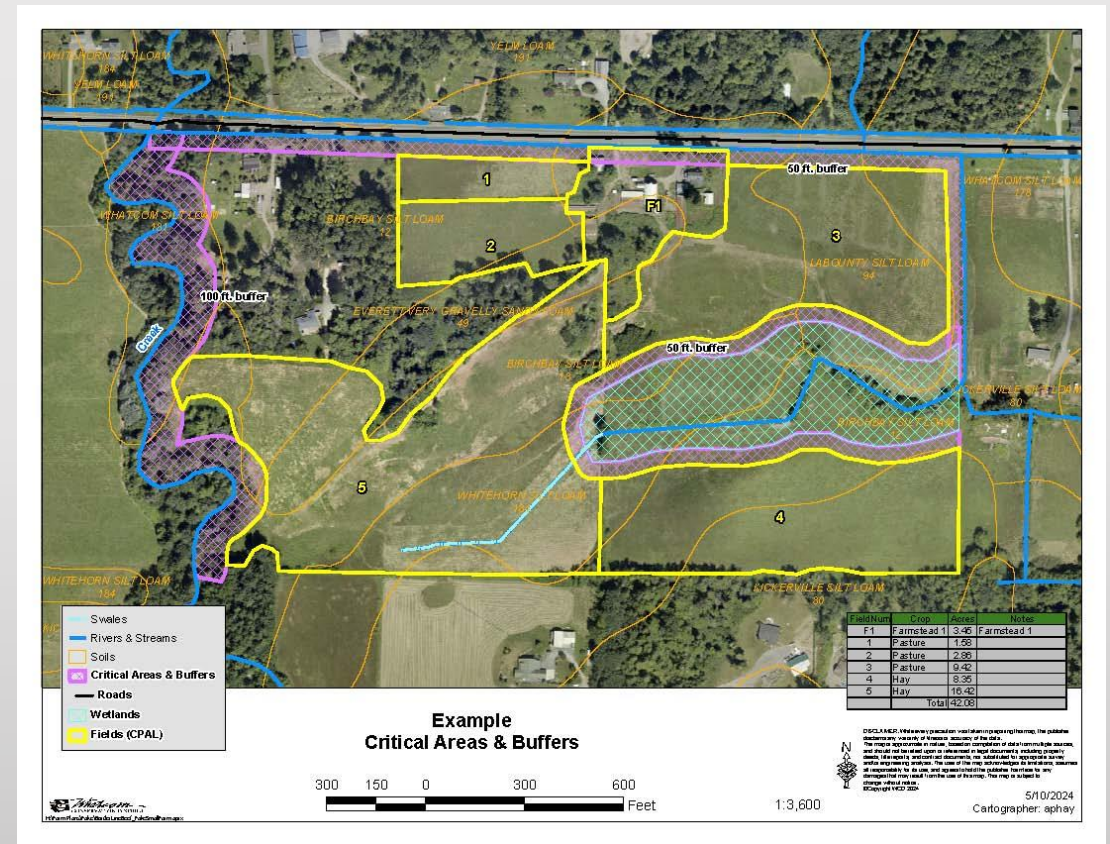
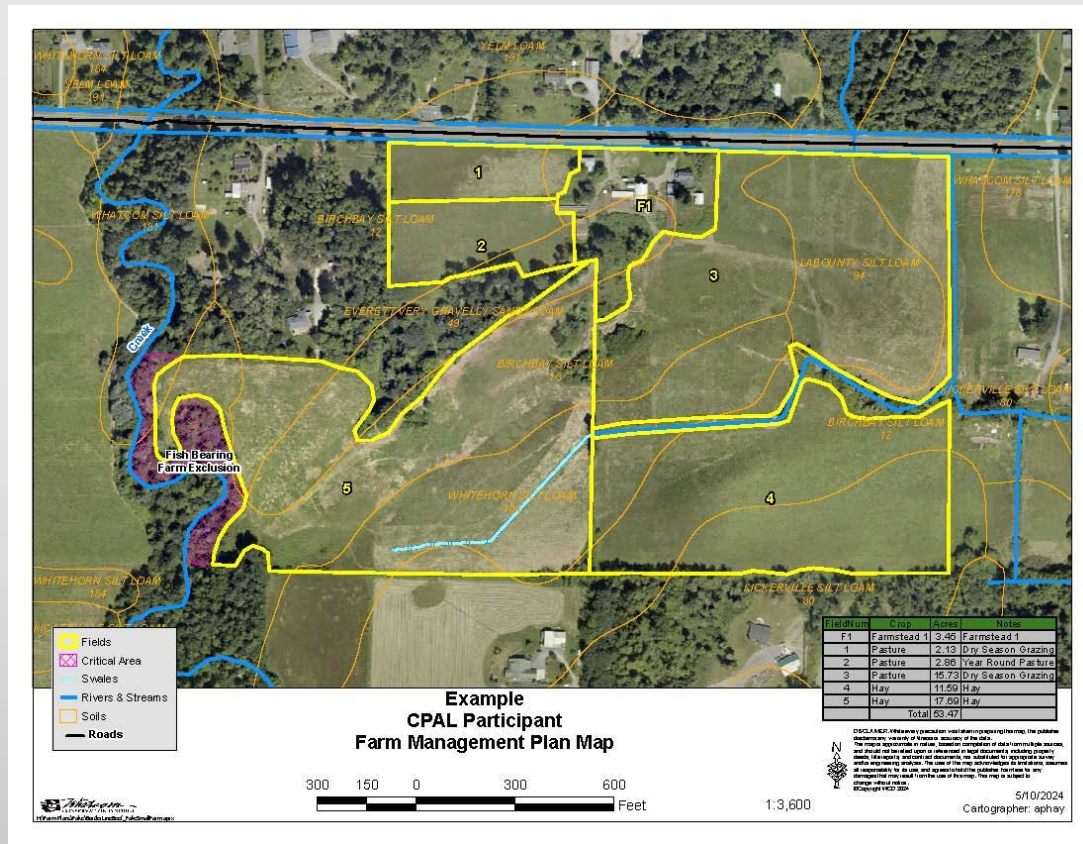


Identifying Best Management Practices

And More...



5. Prioritize and Implement BMPs



Comparison of pre and post planning for enrollment of CPAL

Resources for BMP implementation

Cost Share

Federal (EQIP, RCPP)

- Must be a “Farmer”
- \$450,000 cap
- NRCS Conservation Practices/CNMP

State

- \$100,000 cap
- NRCS Conservation Practices or PE Designed

Local Whatcom County

- \$4,500 cap
- Non-Dairy

Technical Assistance

- Design
- On going adaptations



Farm planning with Whatcom CD

- Dairies
 - Mixed Livestock
 - Berries
 - Mix fruit and veggies
 - Potatoes
-
- *Pre 2014 80% clients from regulatory referrals*
 - *Currently we have 80% voluntary clients and 20% from regulatory, shift due to implementation of community outreach and engagement plan.*



Links mentioned in presentation

- <https://www.whatcomcd.org/>
- Virtual Speaker Series on Pasture Management
 - <https://www.youtube.com/playlist?list=PLkIVfeTNxZELHiX5miX4gWpv48Hkn3avK>
- Conservation Stories
 - <https://www.whatcomcd.org/latestnews/categories/landowner-spotlights>

Presentation by

Corina Cheever, Conservation Planning Manager

Whatcom Conservation District

360-526-2381

ccheever@whatcomcd.org