

JANUARY 28, 2020

2019 Highlights & Deliverables

What's Next in 2020



Regional Economic Partnership



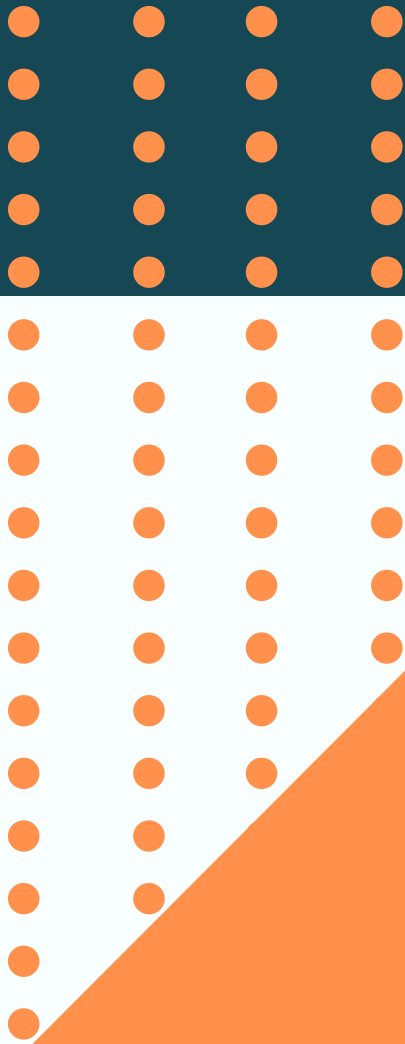
Regional Strength Through Economic Diversity

Who We Are

TEAM MEMBERS

- Don Goldberg, Director
- John Michener, Economic Development Project Manager
- Gina Stark, Economic Development Project Manager
- Jennifer Noveck, Ph.D., Research and Communications Manager

2019 Team





Regional Economic Partnership

Who We Are

39 COUNTIES: ALL WITH AN ADO

- State Commerce designation
- Many are held by Economic Development Councils (EDC)

1 OF 4 PORTS TO HOLD COUNTY ADO

- Douglas, Chelan, Walla Walla
- We work for all of Whatcom County

FUNDING SOURCES

- Tri-funded locally: County, COB, POB
- WA Dept of Commerce

2019 Deliverables

The REP Rebrand



Regional
Economic
Partnership

MAJOR TOOLS

- County-wide brochure
- POB social media daily posts & REP Instagram posts
- Departmental quarterly newsletter
- Rebranded the department: new logo, new name, new business cards
- Strategy presentations to stakeholders
- Sponsoring important community & sector specific events



Our Partners

2019 Highlights





Boards & Committees

2019 Highlights

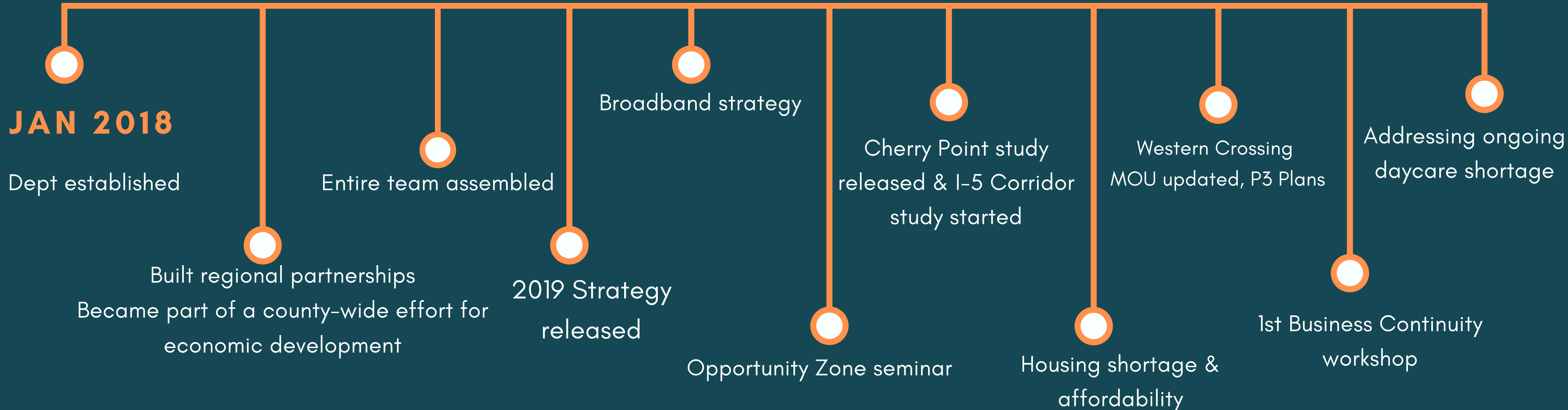
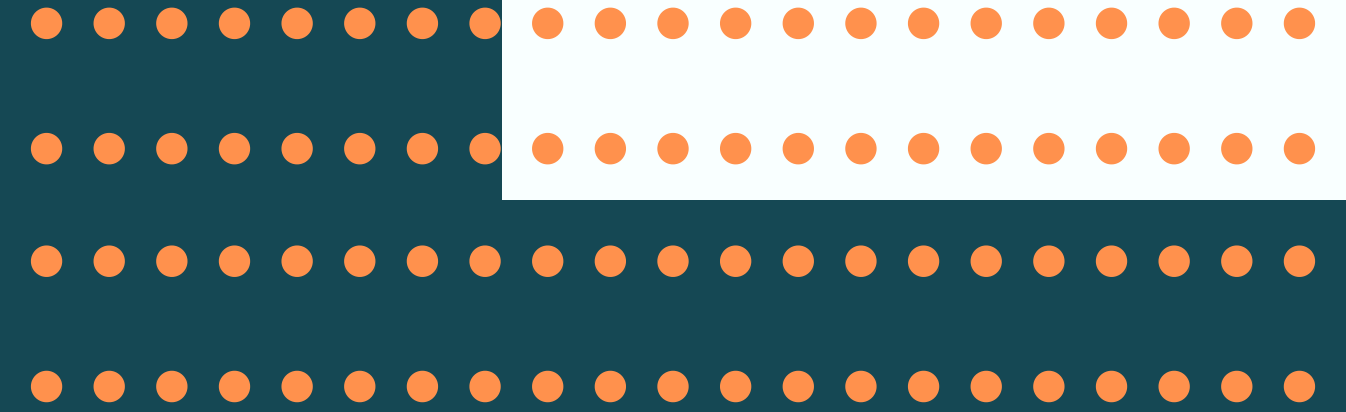
- **Washington Maritime Blue**
- Cascadia Innovation Corridor
- COB Climate Action Task Force
- Surrey Board of Trade (SBOT)
- International Mobility Trade Corridor (IMTC) Program
- Downtown Bellingham Partnership Board
- **Whatcom Housing Alliance (WHA)**
- Habitat for Humanity
- **Whatcom County Business & Commerce Committee**
- **Small Cities Partnership**
- **Economic Development Investment (EDI) Board**
- Technology Alliance Group (TAG) Board
- **Whatcom County Tourism Board**
- Worker Retraining Advisory Committee
- ESOP Committee
- Whatcom Daycare Shortage Committee
- POB Sustainability Committee
- Chambers of Commerce: Bellingham Regional, Blaine, Birch Bay, Ferndale, Lynden, Nooksack-Everson, Point Roberts, and Sumas
- **Team Whatcom**

REP History

Built a strong foundation in 2018

Developed plans & strategies in 2019

Strategizing, implementing, & delivering in 2020



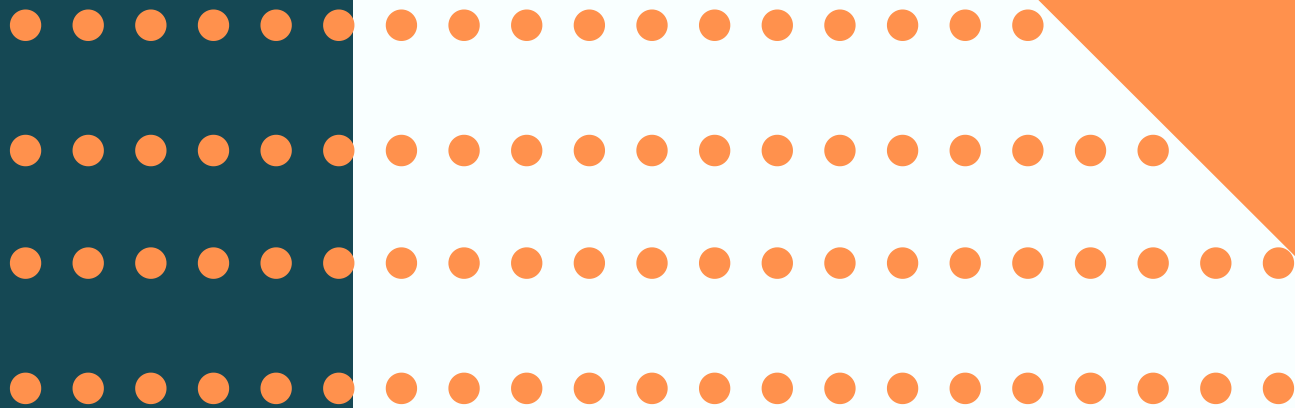


Regional Economic Partnership in 2019

DELIVERABLES & HIGHLIGHTS OF COUNTY-WIDE
PROJECTS WE ARE WORKING ON



Whatcom County Rural Broadband



Bellingham Fiber Study Run Lengths



2019 Deliverables

- Route 1 planned & funded by CERB, EDI, POB
- Expected construction in 2020

Cherry Point

2019 Deliverables

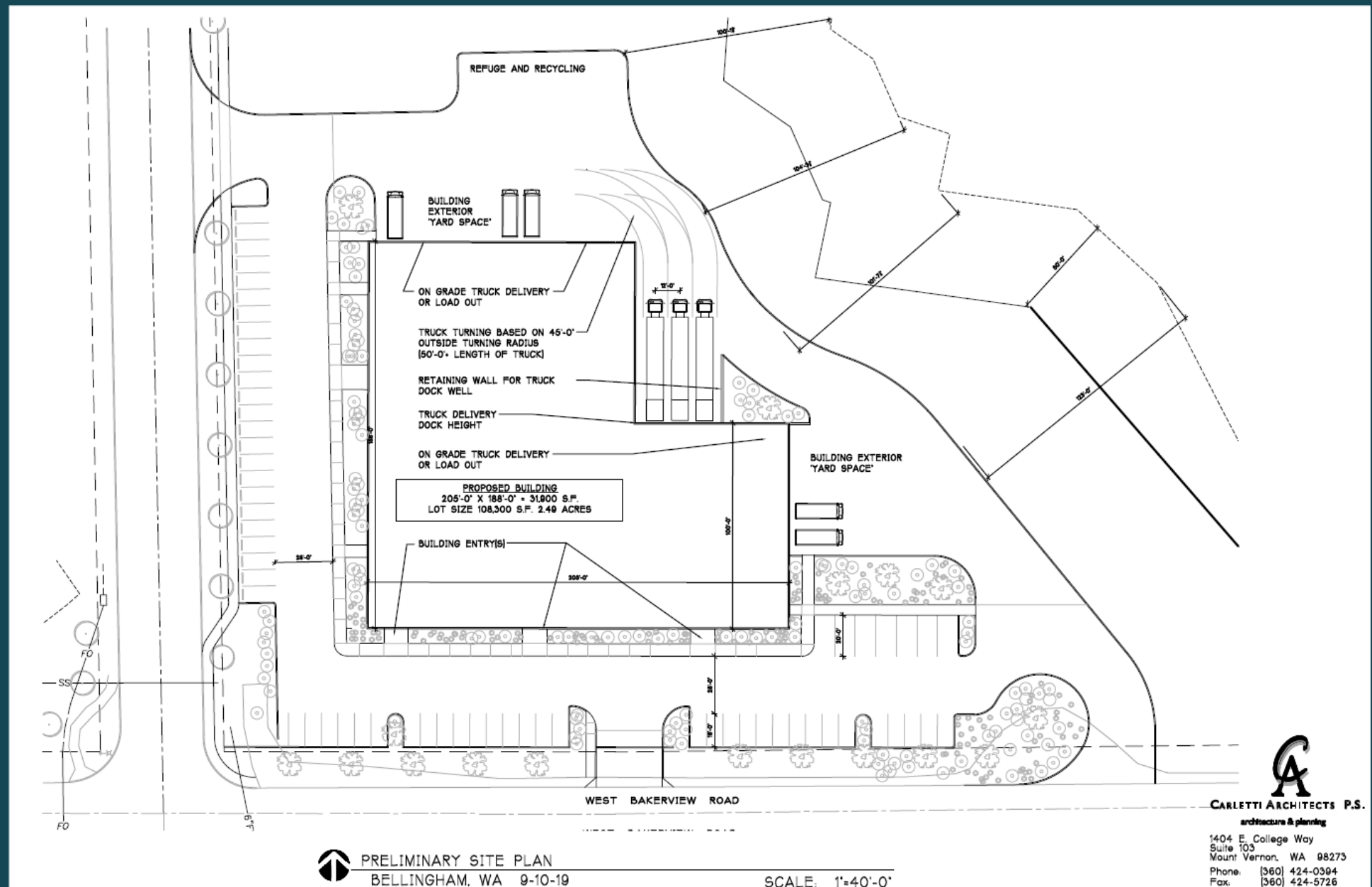
- Market assessment & fresh analysis completed March 2019
- Heartland recommendations for industrial development within the UGA



Whatcom County Industrial & Commercial

- Consulting with land & building developers
- Identifying infrastructure and utility expansion & improvement needs
- Airport industrial lots
- Increasing our industrial inventory
- Western Crossing updated P3 plan

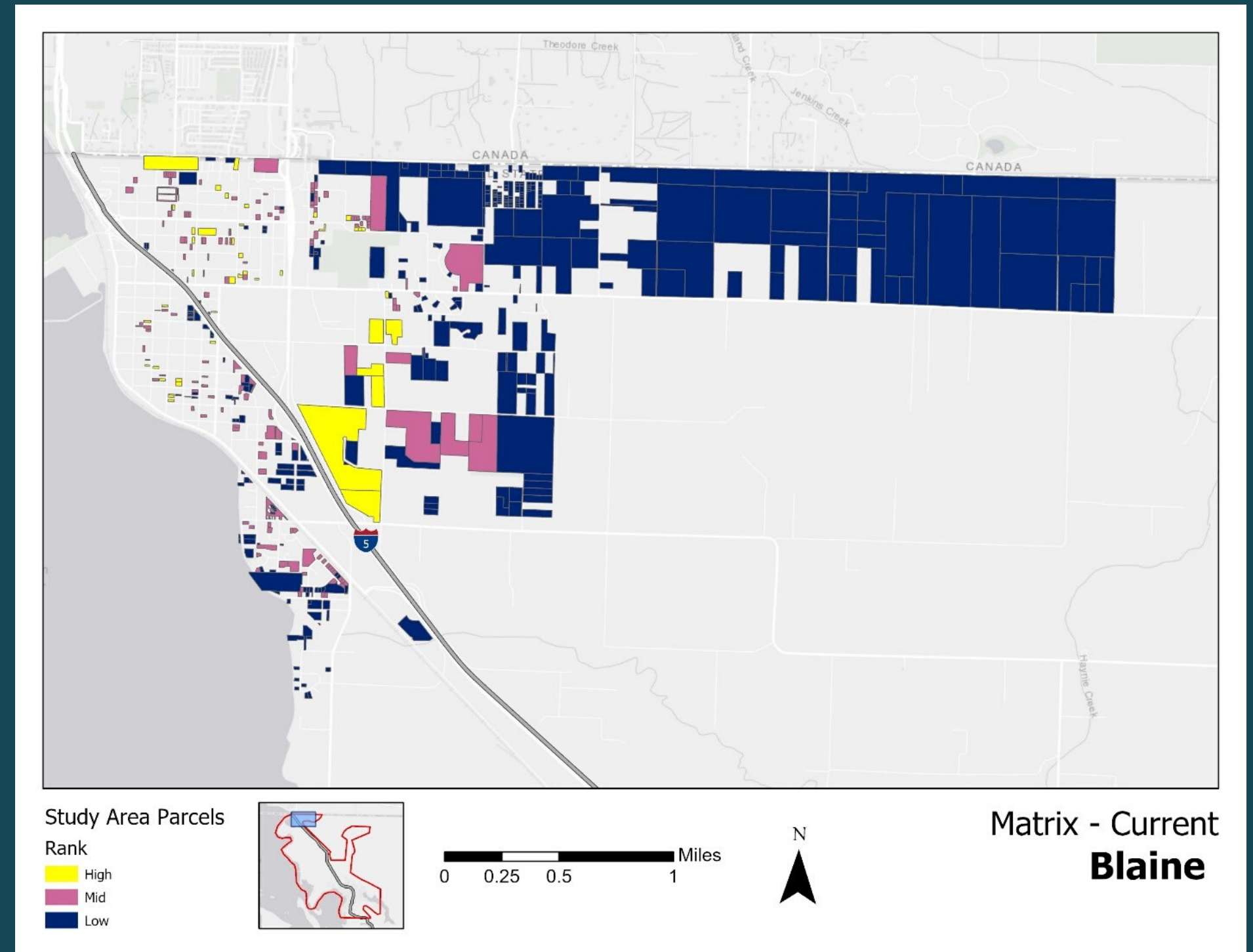
2019 Deliverables



Infrastructure & Utilities Project

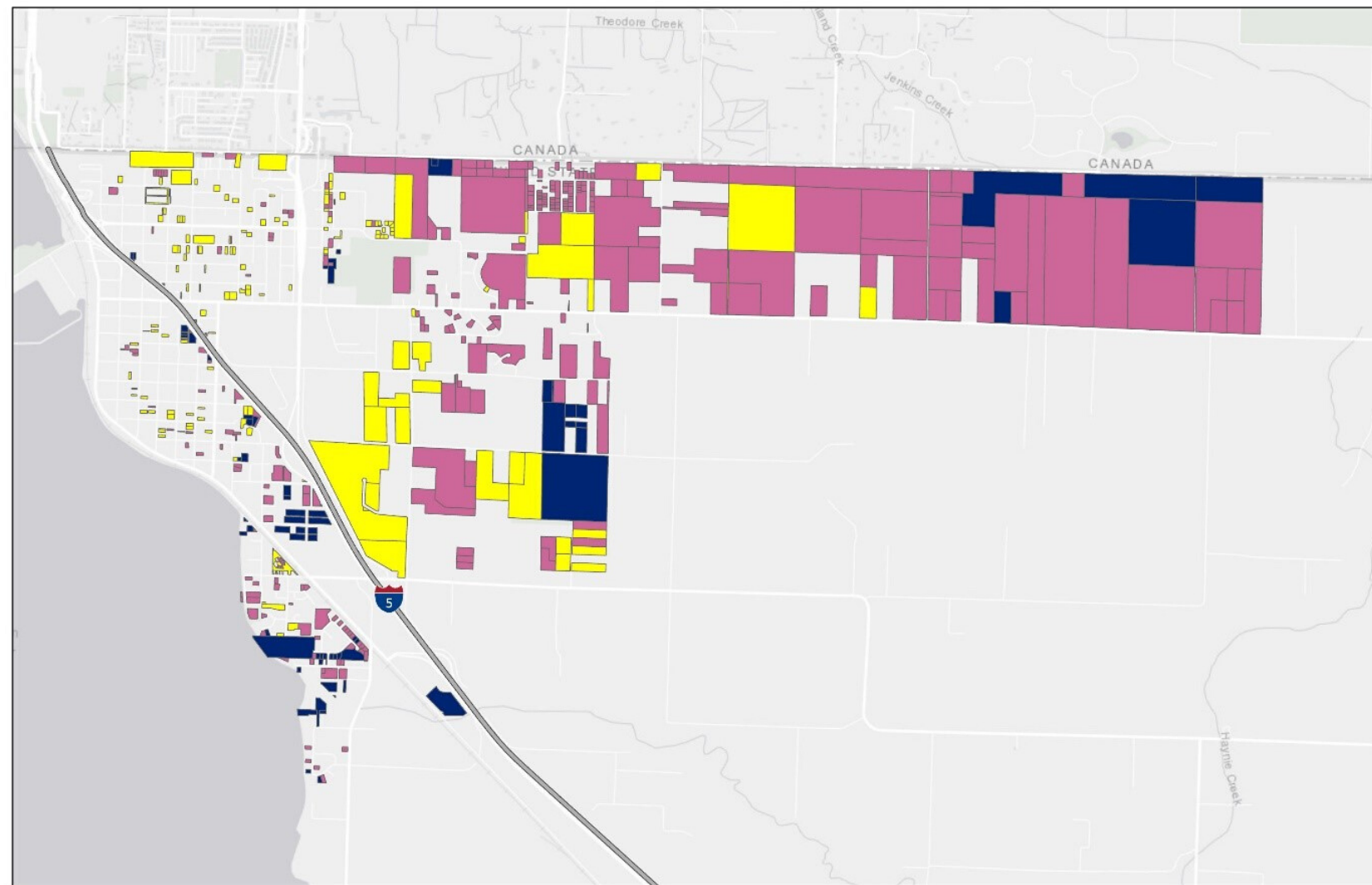
- I-5 Corridor focus
- Data collected from multiple jurisdictions
- Connecting regional resources & data
- Data, inventory, maps, report findings to be completed by March 2020

2019 Deliverables



Infrastructure & Utilities Project

- Illustrates how parcel developability improves when all parcels have access to water, sewer, electric, & fiber utilities
- Easily identify shovel ready parcels
- Allows public works to see added value of potential expansion routes



Study Area Parcels

Rank

- High
- Mid
- Low



0 0.25 0.5 1 Miles



Matrix - Scenario
Blaine

2019 Deliverables

Business Resiliency

2019 Deliverables & Ongoing Work in 2020

TSUNAMI MARINE MITIGATION PLAN

- Working with county, city & federal partners to develop a template for WA state

RESILIENCY BEYOND BORDERS

- Partnering with EDASC on Recovery Plan & Workshops

PRE-DISASTER ECONOMIC RECOVERY PLAN

- County-wide, 1st ADO in WA State

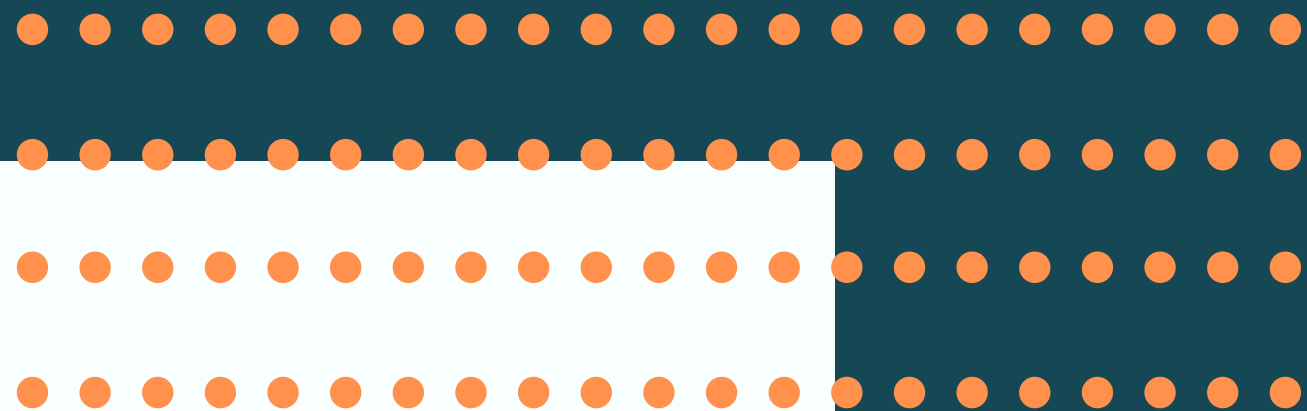
BUSINESS CONTINUITY WORKSHOPS

- Offered one, very well-attended via FEMA & WA EMD
- Developing improved, local-context specific curriculum to be offered in the future county-wide



Western Crossing

- **October 2019:** Finalized and adopted Development Plan & updated MOU
- 2020: Work with Port/WWU team to develop & issue RFP for P3 proposals
- **By end of 2020:** Negotiate & enter P3 agreements



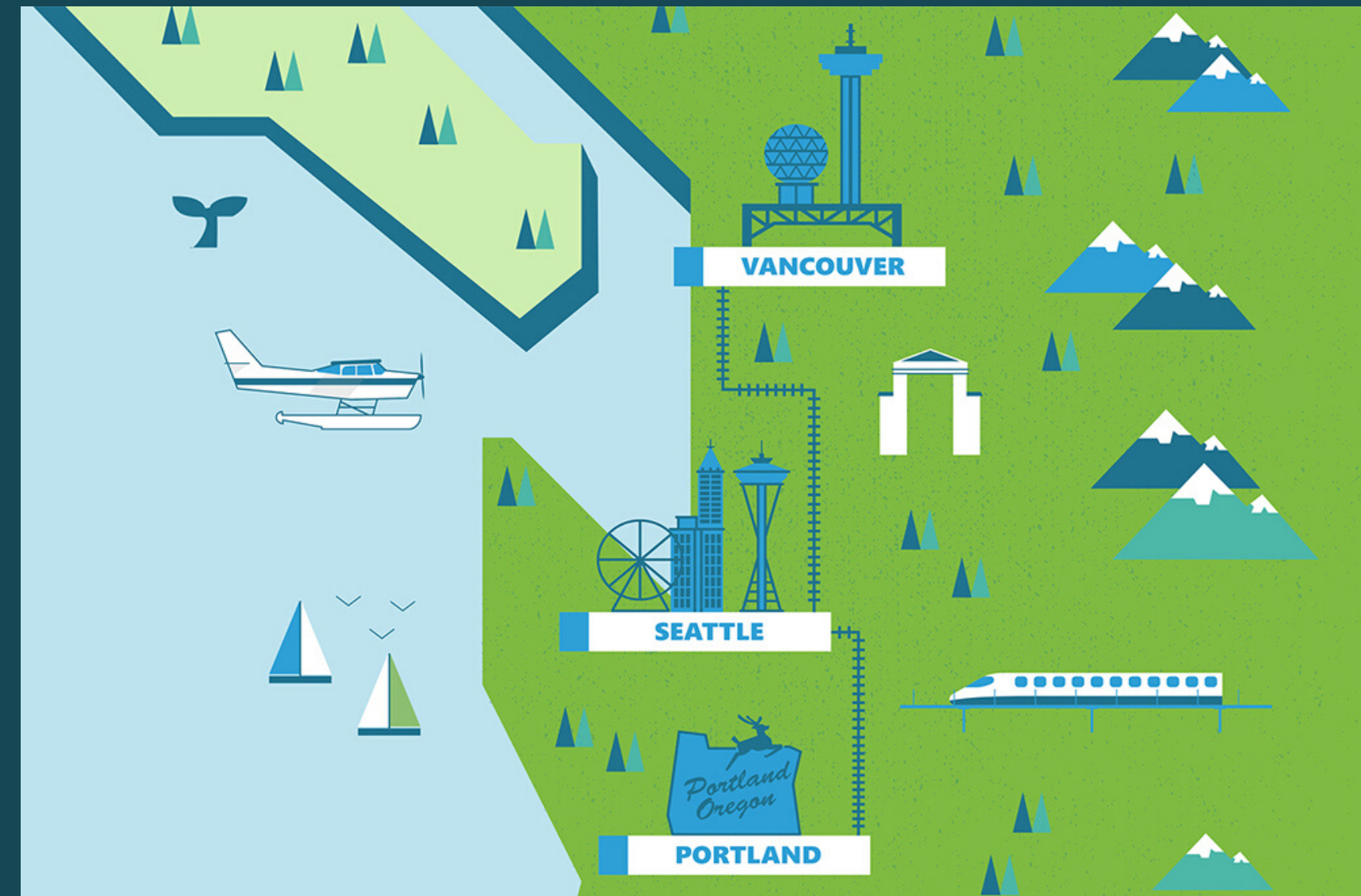
**2019 Deliverables &
Ongoing Work in 2020**

Whatcom County & Beyond

2019 Deliverables & Ongoing Work in 2020

DEVELOPMENT BEYOND BORDERS

- 1st American on Surrey Board of Trade Board of Directors
- Active in IMTC, Cascadia Innovation Corridor
- Partnering with City of Surrey Economic Development team
- Collaborating with EDASC



Recruitment & Expansion

2019 Deliverables & Ongoing Work in 2020

FAMILY CARE NETWORK EXPANSION

- New facility in Blaine

SILFAB EXPANSION

- Building our green energy cluster
- Supported a \$250K SRF grant

TIDAL VISION EXPANSION

- Huge potential environmental impact

NUTRIDRIED EXPANSION

- Facilitated a \$100K JSP grant

360 MODULAR

- Worker housing possibilities

NO MEAT FACTORY

- Expanding our food processing cluster

... And many more in the works!



2019 ADO Deliverables

RECRUITMENT

- 61 companies

RETENTION

- 50 companies
- 25 follow ups

EXPANSION

- 50 companies
- 25 follow ups

ASSISTANCE

- 20 companies
- 20 follow ups

CAPACITY BUILDING

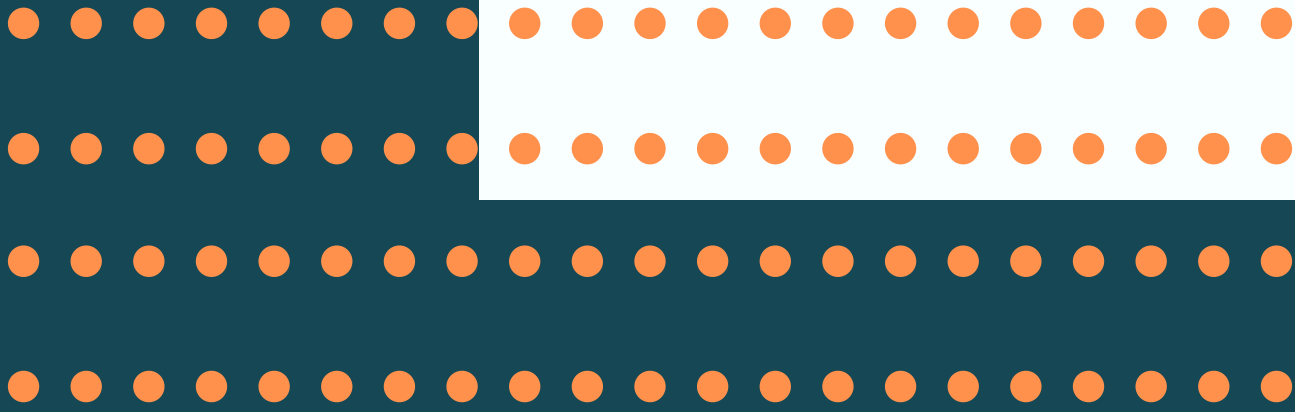
- 50 events & meetings

COMMUNITY

- Sponsored more than 10 major community events

2019 ADO Deliverables

Every point of contact requires copious follow up



TOTALING MORE THAN 2500
POINTS OF CONTACT

What's Next?

2020 & Beyond



Update CEDS



Continue to build partnerships & make collaborative efforts



Build resilience in our communities & businesses



Work to increase accessibility & availability of housing & childcare services



Improve & expand relations with Tribal partners



Continue to increase development products



Deliver family wage jobs



Implement strategies for broadband, Cherry Point, & utilities



Facilitate Western Crossing P3

