

FACILITIES 2025 SPRING UPDATE

APRIL 2025



UPDATE ON COMPLETED PROJECTS

- ▣ JUDGE ANDERSON'S ADA BENCH PROJECT
- ▣ BLOCK 1 OF COURTHOUSE EXTERIOR PROJECT
- ▣ CONVERSION OF CONFERENCE ROOM 513/514 TO A NEW SUPERIOR COURT COURTROOM AND A JUDGES CHAMBERS AND OFFICES
- ▣ JAIL KITCHEN EQUIPMENT REPLACEMENT
- ▣ JUDGE OLSON COURTROOM ADA DOOR PROJECT
- ▣ PROSECUTING ATTORNEY'S OFFICES CUBICAL REMODEL
- ▣ WILLIAMSON WAY GENERATOR

JUDGE ANDERSON (DISTRICT COURT) ADA BENCH REMODEL

- ▣ PURPOSE- CREATE AN ASSESSIBLE BENCH FOR DISTRICT COURT STAFF- COURTROOM ASSESSIBLE FOR PATRONS, BUT NOT THE BENCH
- ▣ PERFORM THIS WORK DURING NORMAL BUSINESS HOURS, WITH LITTLE DISRUPTION TO DAILY OPERATIONS
- ▣ MAKE THIS THE MODEL FOR ALL FUTURE COURTROOM REMODELS

CHALLENGE

- ▣ GAIN ELEVATION TO THE BENCH WITH LIMITED OR NO ROOM FOR RAMPS



JUDGE ANDERSON'S COURTROOM



BLOCK 1 COURTHOUSE EXTERIOR PROJECT

- ▣ MULTI-YEAR PROJECT TO ELIMINATE WATER INTRUSION IN THE COURTHOUSE
- ▣ THREE TOTAL PROJECTS COMPLETED TO DATE. 2024 WORK THE LARGEST BITE OF THE PROJECT TO DATE

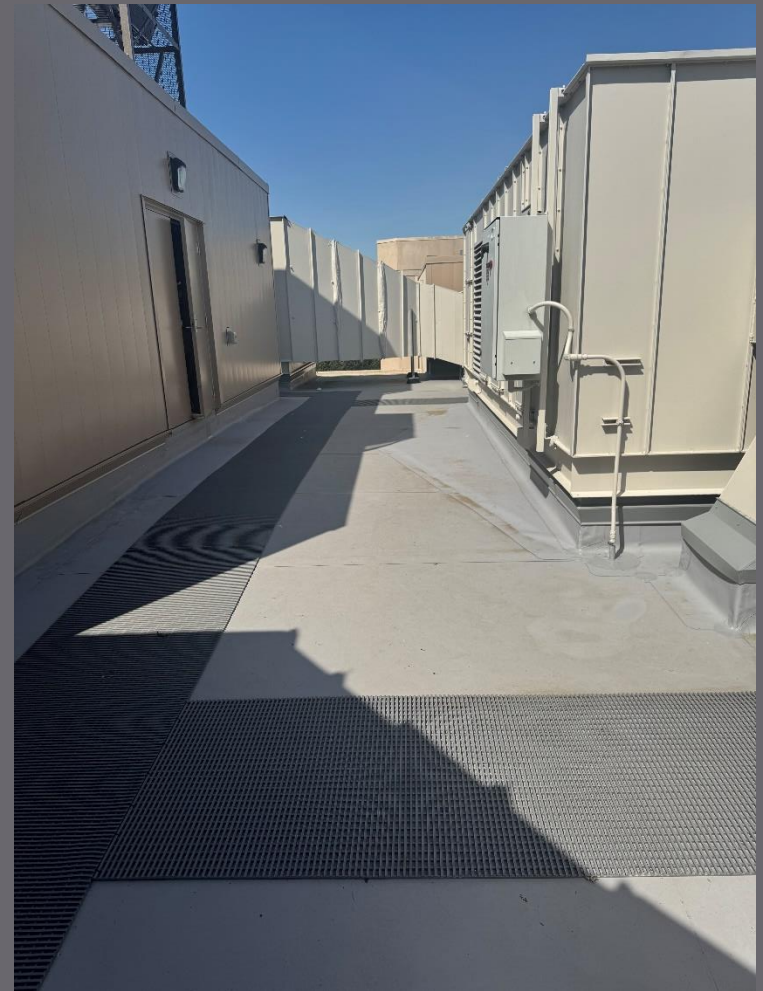
COURTHOUSE ROOF PROJECT 2024

- ▣ SEVEN ROOFS REPLACED WITH NEW ROOFING AND INSULATION FOR ENERGY EFFICIENCY
- ▣ REPLACED THREE HVAC CHILLERS (ALL 1993 VINTAGE) WITH NEW EQUIPMENT IN KIND- IF WE HAD TO REMOVE THE HVAC UNITS TO PERFORM ROOF WORK, IT WAS PRUDENT TO REPLACE THE 22 YEAR OLD UNITS DURING THIS PROJECT.

COURTHOUSE ROOF PROJECT 2024



COURTHOUSE ROOF PROJECT 2024



CONVERSION OF CONFERENCE ROOM 513/514

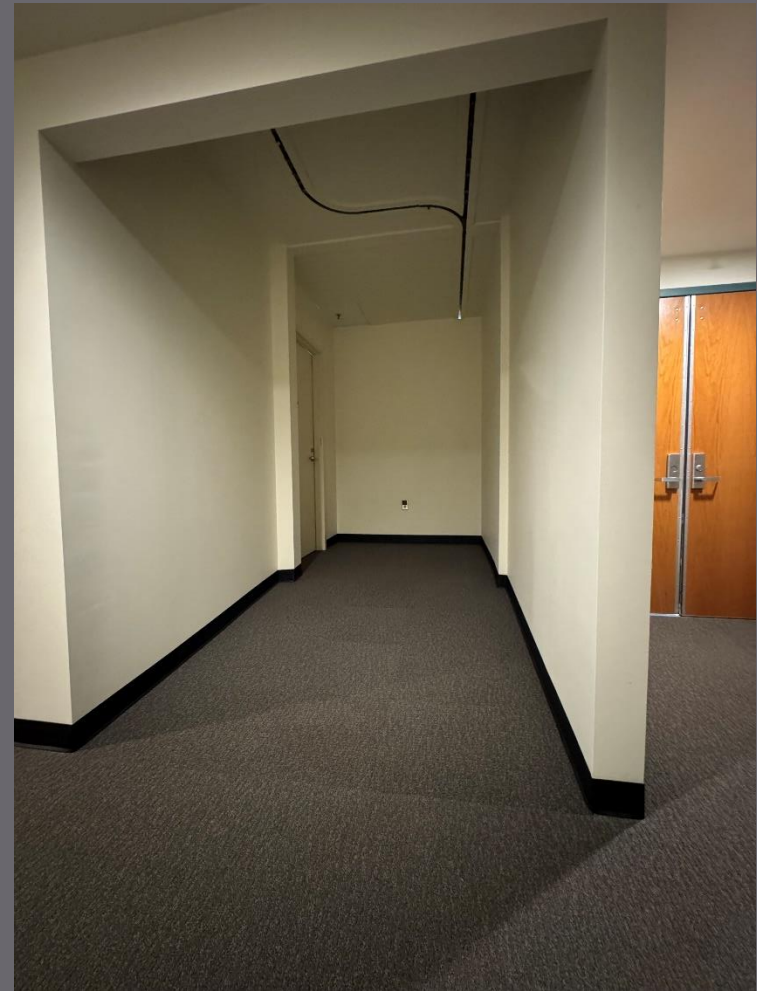
- ▣ CREATE A NEW COURTROOM, WILL BE USED SHORT TERM AS THE WATER ADJUDICATION COURTROOM
- ▣ CREATE A NEW SUITE FOR A JUDGE AND ASSISTANTS

CONVERSION OF CONFERENCE ROOM 513/514

COURTROOM



RAMP



CONVERSION OF CONFERENCE TO TWO-OFFICE SUITE



JAIL KITCHEN EQUIPMENT REPLACEMENT



JUDGE OLSON'S ADA DOOR REPLACEMENT PROJECT

- ▣ PROBLEM: TWO 28" LEAF DOUBLE DOOR ENTRY, NEITHER DOOR MET ADA
- ▣ PERMIT, AND REPLACE DOUBLE DOOR WITH A SINGLE DOOR, WITH ADA AUTOMATIC OPENER

JUDGE OLSON'S DOOR (SELF PERFORMED)

BEFORE



AFTER



WHAT IS UNDERWAY

- ▣ WILLIAMSON WAY GENERATOR
- ▣ 3RD FLOOR CONVERSION OF FORMER IT SPACE INTO NEW SUPERIOR COURT COURTROOM
- ▣ 400 NORTH COMMERCIAL
- ▣ UNITY STREET MINOR REMODEL
- ▣ ASSESSOR OFFICE MINOR REMODEL
- ▣ SUPERIOR COURT CLERK SAFETY GLASS

WILLIAMSON WAY GENERATOR

- ▣ 2024 FUNDED PROJECT. GENERATOR ORDERED FALL OF 2024, DELIVERY DATE MID MAY (SELF PERFORMED)



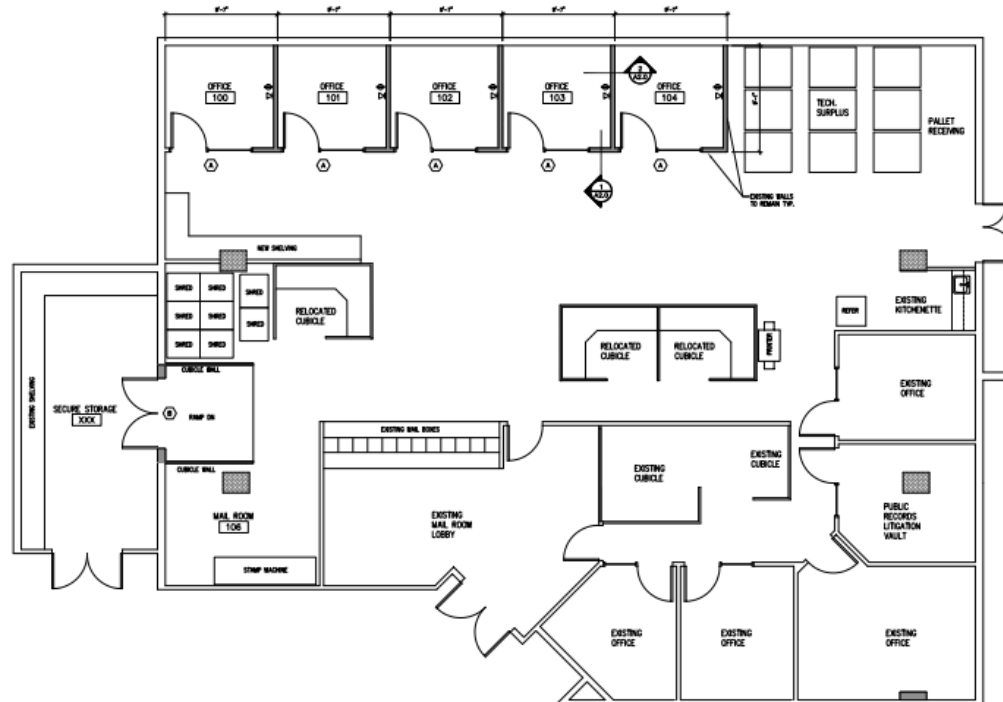
- ▣ CURRENTLY OUT TO BID
- ▣ ESTIMATE- APPROXIMATELY \$1,000,000
- ▣ CONSTRUCTION TO BEGIN JUNE 2025



400 NORTH COMMERCIAL

- ▣ NEW HOME FOR IT (ALONG WITH BASEMENT REMODEL)
- ▣ DEMOLISHED AND REINSTALLED ALL NEW LOW VOLTAGE DATA WIRING (SELF PERFORMED)
- ▣ INSTALLING NEW SECURITY MEASURES, CAMERAS, ELECTRONIC LOCKS
- ▣ CONNECTIVITY TO NETWORK (IT)
- ▣ MOVE SCHEDULED FOR EARLY MAY

A2.0

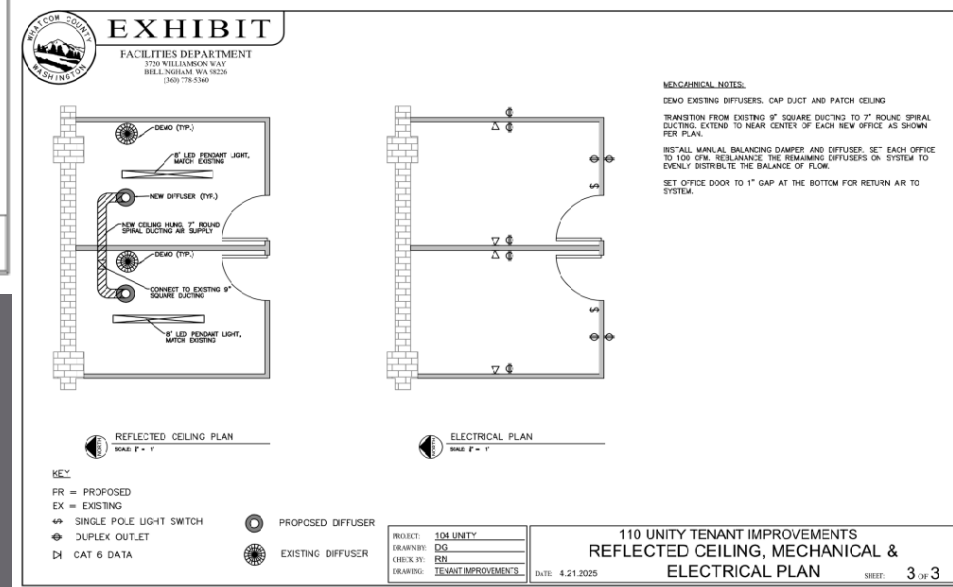
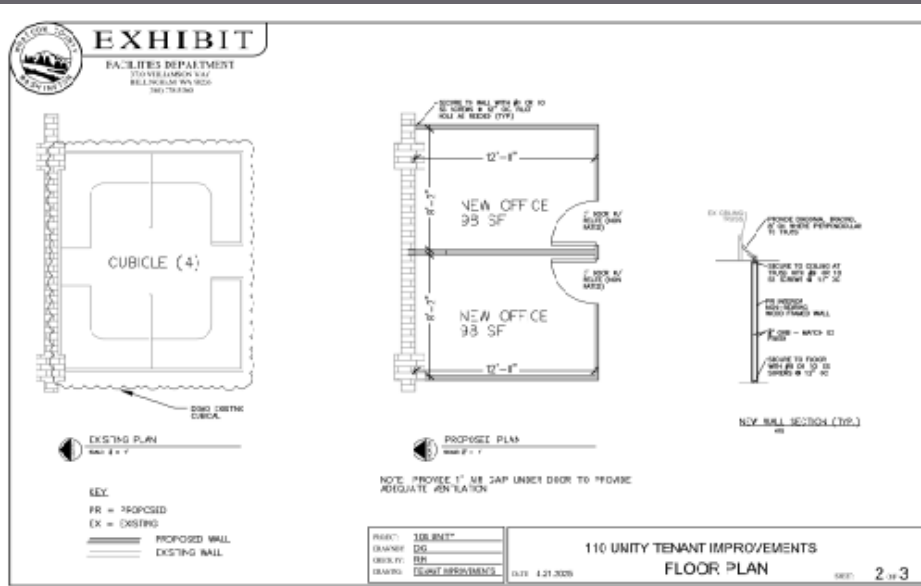


FLOOR PLAN
SCALE: 1/4"=1'-0"



110 UNITY STREET

MINOR REMODEL – ONLY ADD 2 NEW OFFICES FOR FUTURE HEALTH SUITE



ASSESSOR OFFICE MINOR REMODEL

- ▣ PROBLEM- SPACE HAS NOT BEEN REMODELED SINCE 1993
- ▣ STAFF HAS OUTGROWN SPACE
- ▣ FACILITIES WORKING WITH ASSESSOR ON WAYS TO MAXIMIZE SPACE
- ▣ FUTURE SUPPLEMENTAL BUDGET REQUEST COMING TO COUNCIL NEXT MONTH
- ▣ 2024 CIP LISTED PROJECT AS \$350K, 2025 CUBICAL PROJECT APPROX. \$120K

ASSESSOR OFFICE MINOR REMODEL



EXHIBIT

FACILITIES DEPARTMENT

3730 WILLIAMSON WAY
BELLINGHAM, WA 98226
(360) 778-5360

SCOPE OF WORK:

PROCURE AND INSTALL NEW OFFICE DESKS, PARTITIONS, WINDOWS AND OTHER MISC OFFICE FURNITURE PER PLAN. REFER TO SPEC FOR MATERIAL TYPE. CONTRACTOR TO PROVIDE ADEQUATE SUBMITTAL OF MATERIALS AND LAYOUT PRIOR TO INSTALL. COORDINATE INSTALL WITH OFFICE SCHEDULE.

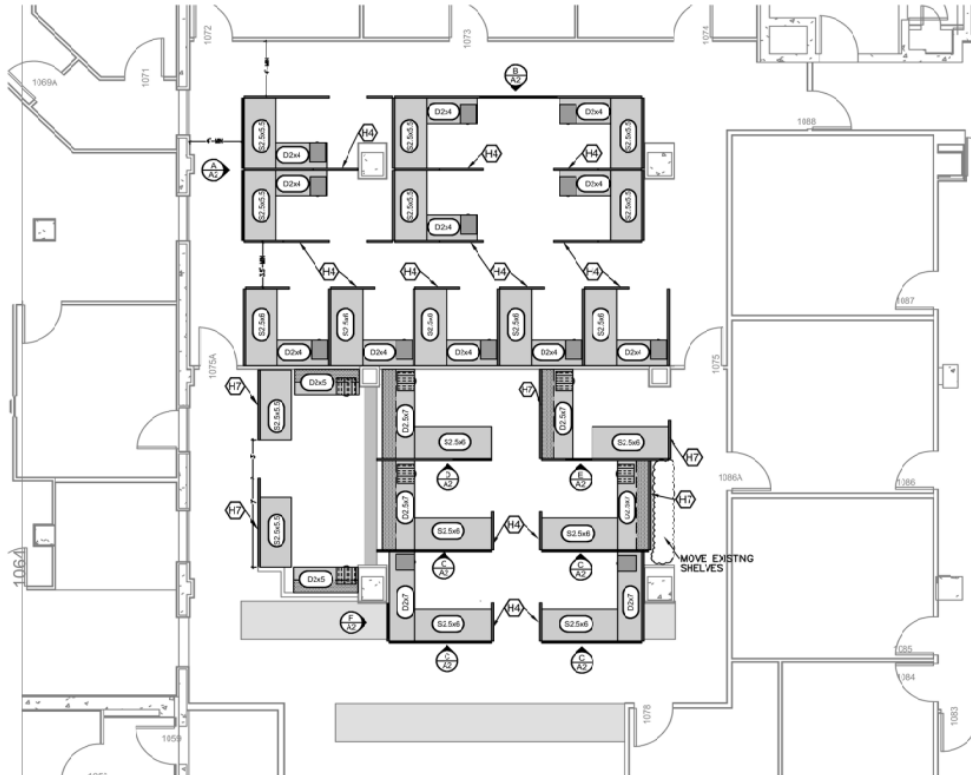
KEY

- NEW WALL PARTITION
- NEW DESK
- UNDER DESK SLIDING DRAWERS
- ROLLING FILING CABINET
- DESK MOUNTED STEEL HUTCH
- ① NOTED HEIGHT (FEET)
PARTITION HEIGHT
- ② WIDTH (FEET), TYP
- ③ STATIONARY DESK
LENGTH (FEET), TYP.
- ④ SIT/STAND DESK
- ⑤ DETAIL #
ELEVATION VIEW
SHEET #

NOTE: ALL PARTITIONS ARE SOLID AND 5.5' UNLESS OTHERWISE NOTED.

PLAN IS APPROXIMATE AND MEANT FOR COMPETITIVELY BIDDING. CONTRACTOR SHALL VERIFY ALL DIMENSION AND LOCATION PRIOR TO INSTALL.

CONTRACTOR MUST SUPPLY SUBMITTAL OF ALL FURNITURE, PARTITIONS AND IMPROVEMENT APPROVED BY WHATCOM COUNTY PRIOR TO INSTALL.



SUPERIOR COURT SAFETY GLASS



EXHIBIT

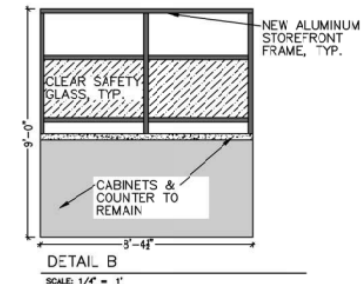
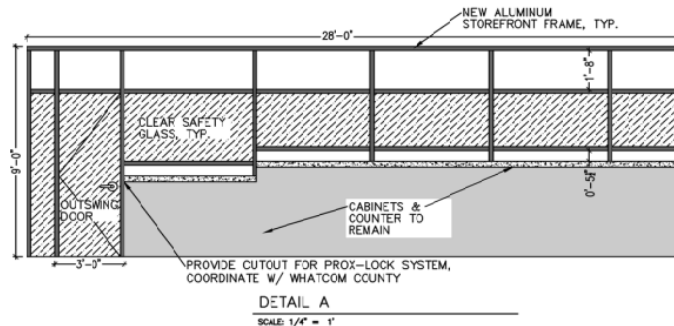
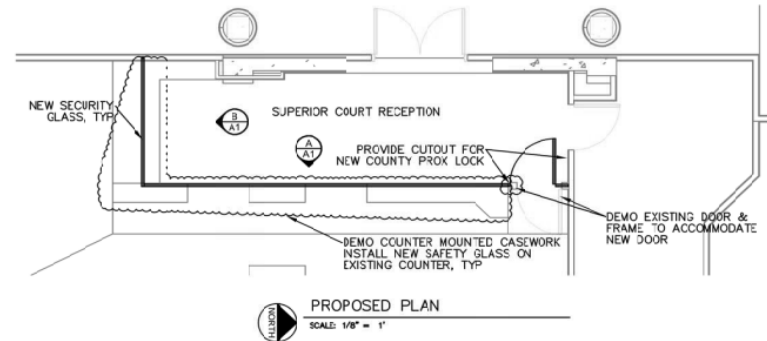
FACILITIES DEPARTMENT
3720 WILLIAMSON WAY
BELLINGHAM, WA 98226
(360) 778-5360

SCOPE OF WORK:

- DEMO EXISTING COUNTER MOUNTED CASEWORK, EXISTING SWING DOOR AND FRAME. PATCH EXISTING COUNTER AS NECESSARY
- INSTALL NEW STOREFRONT SAFETY GLASS PER PLAN
- PROVIDE ADEQUATE CUTOUTS FOR NEW PROX-LOCK SYSTEM
- COORDINATE INSTALL OF PROX-LOCK WITH WHATCOM COUNTY
- CONTRACTOR TO PROVIDE DETAILED SUBMITTAL OF PRODUCTS, FINISHES AND LAYOUT FOR APPROVAL PRIOR TO INSTALL.

SPECIFICATIONS

- SAFETY GLASS SHALL BE STOREFRONT SYSTEM
- SAFETY GLASS SHALL CONSIST OF 1" CLEAR LAMINATED
- FRAME SHALL 1.75" ALUMINUM FRAMES WITH MILLED FINISH



PROJECT: SC - SAFETY GLASS
DRAWN BY: DG
CHECK BY: RN
DRAWING: TENANT IMPROVEMENTS

SUPERIOR COURT SAFETY GLASS PROJECT PLAN AND ELEVATIONS

DATE: 3.31.2025

SHEET: A1 OF A1

WHAT ELSE?

- ▣ NORTHWEST ANNEX- VEST PROJECT
- ▣ JUSTICE FACILITY- CONTINUED WORK WITH ONBOARDING DESIGN BUILD GENERAL CONTRACTOR