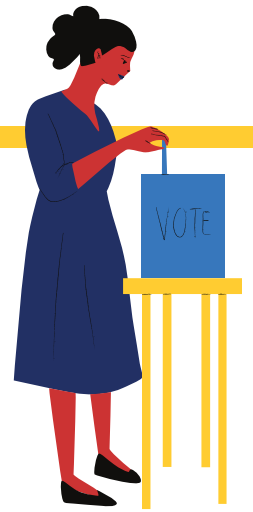


HOW RANKED-CHOICE VOTING WORKS



The Basics

Ranked choice voting (RCV) is a simple improvement to the way we vote. With RCV, you can rank candidates on your ballot in the order you prefer: 1st choice, 2nd choice, 3rd choice, and so on. If your favorite can't win, your vote counts for your next choice.

	Preference Ranking			
	1st Choice	2nd Choice	3rd Choice	4th Choice
Candidate A	●	○	○	○
Candidate B	○	○	○	●
Candidate C	○	○	●	○
Candidate D	○	●	○	○

Questions?

Email Stephanie Houghton
stephanie.houghton@fairvotewa.org

Why would a community adopt RCV? Because RCV...

GIVES VOTERS A STRONGER VOICE since they can vote sincerely for their true values without fear of wasting their vote. If your favorite can't win, your vote still counts for your next choice.

PROVIDES VOTERS WITH MORE CHOICES. Since candidates don't need to worry about "vote-splitting", more candidates are encouraged to run.

REWARDS ISSUE-DRIVEN CAMPAIGNS AND REDUCES POLARIZATION by limiting the effectiveness of negative campaigning.

ENSURES WINNERS OF SINGLE-SEAT OFFICES HAVE MAJORITY SUPPORT.

Under our current system "vote-splitting" in crowded fields can cause unpopular candidates to get through the top-two primary or even win election.

CAN SAVE MONEY. Primary elections are expensive and see very low voter turnout. By using ranked choice voting, a municipality or district can combine the primary with a single, high turnout general election.

ENSURES BOTH MAJORITY RULE AND FAIR MINORITY REPRESENTATION.

When used for multi-seat offices, like city and county councils, ranked-choice voting can ensure every community is fairly represented in government. This promotes racial and ideological diversity and renders gerrymandering obsolete.



[Watch a video!](#)

FairVote
WASHINGTON

WHO IS IN THE MOVEMENT?

Ranked-Choice Voting is a sensible voting system that has bipartisan support and has been endorsed by national leaders:



SEN. ELIZABETH WARREN (D)



GOV. BILL WELD (R)



SEN. JOHN MCCAIN (R)



ANDREW YANG (I)



SEN. BERNIE SANDERS (D)



REP. AYANNA PRESSLEY (D)



GOV. GARY HERBERT (R)



SEC. JOHN KERRY (D)

News Outlet Endorsements

The Boston Globe

The New York Times

The Washington Post

The Economist

WHERE IS IT USED?

POTUS PRIMARIES

6 States

MILITARY/OVERSEAS

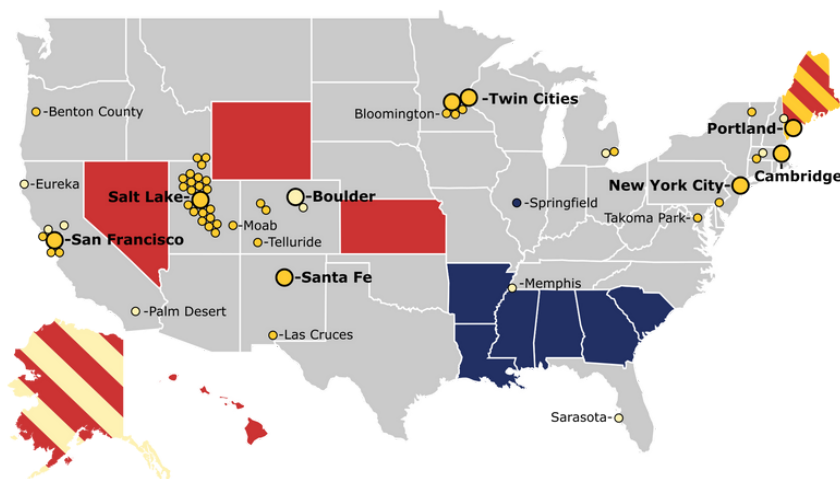
5 states
1 City

ALL ELECTIONS

1 State
1 County
18 Cities

JUST APPROVED

1 State
13 Cities



Support from Local Leaders



Washington Community Alliance
KAMAU CHEGE



Former WA GOP Party Chair
CHRIS VANCE



Former Legislator and Mayor
DEB EDDY

» See all supporters