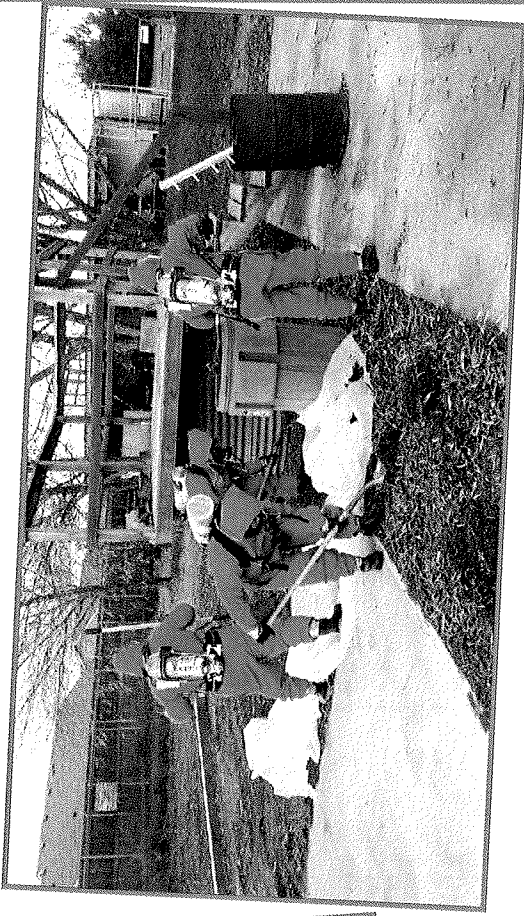
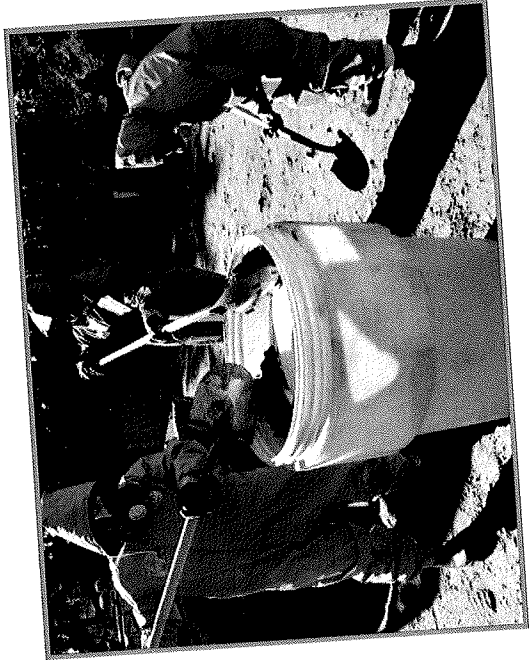


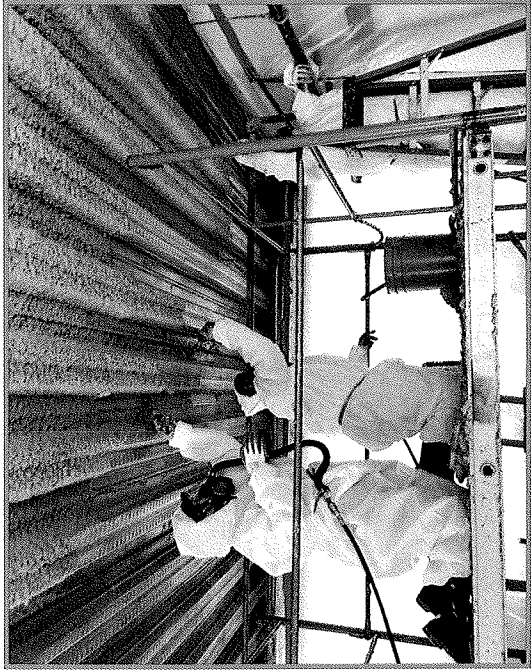


Construction Craft Laborers Training & Apprenticeship

BUILDING NEW CAREERS IN SKILLED LABOR



Hazardous Waste classes at the Kingston Training Center.

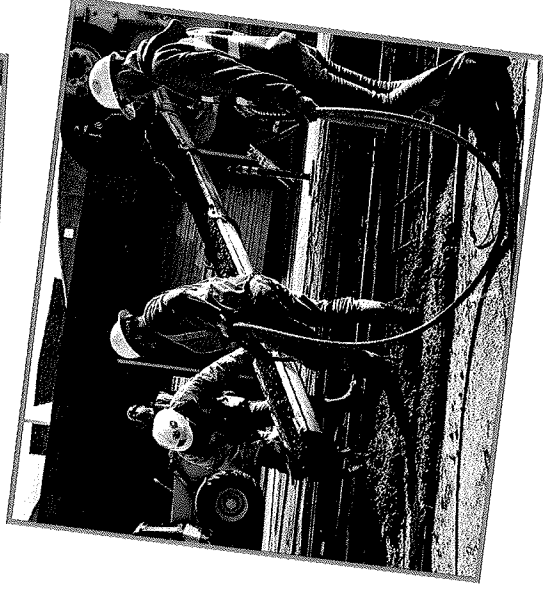
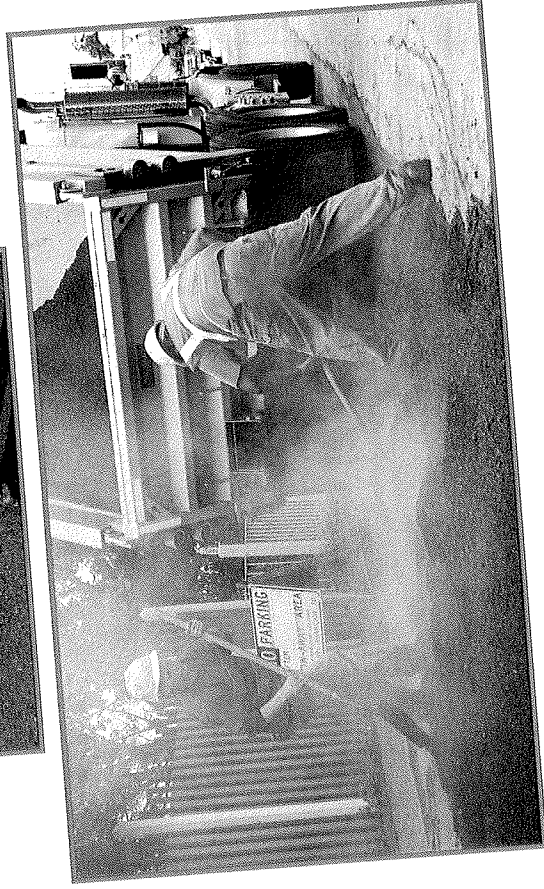


Specialized training, knowledge of the Occupational Safety and Health Administration (OSHA) safety processes, annual re-certification, and protective equipment are all required before Laborers can protect the environment from toxic materials. Laborers help to protect the environment and the public against: asbestos, mold, lead, silica, corrosive, flammable and even radioactive waste.

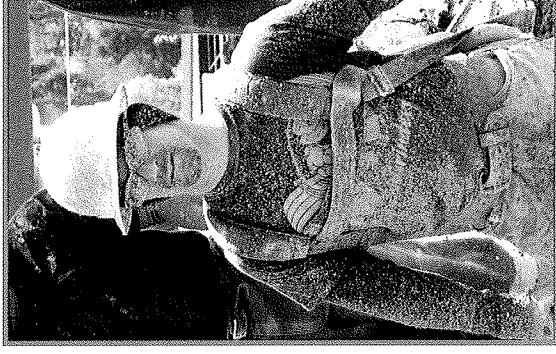
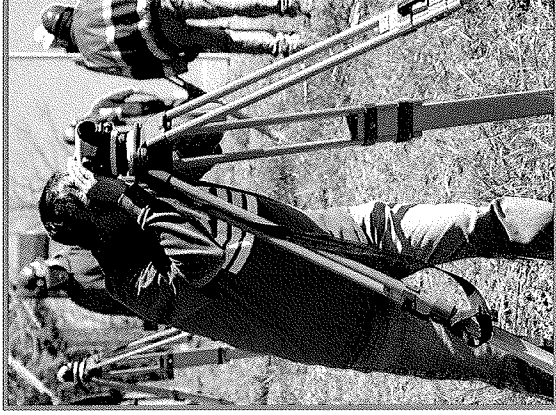
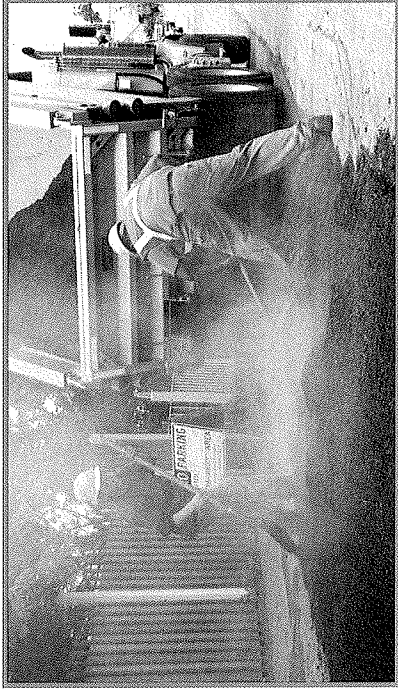
Jobs involving asbestos or hazardous waste removal often means working in confined or restricted areas. Workers are expected to be in compliance with Local, State, and Federal laws regarding cleanup and disposal of hazardous materials. Asbestos and lead work may be necessary during the refurbishment or demolition of older structures. Some workers may find themselves decommissioning and decontaminating nuclear power facilities. Others may be called in to assist with emergencies and natural disasters.

Did you know?
Nearly two-thirds of all registered
apprentices in the US are trained in the
construction industry.
*(Source: Department of Labor, Employment and Training
Administration data)*

Environmental



Laborers from throughout the region are vital (and demand is growing) to the health of our cities, roads, highways and water systems!
By 2020, apprenticeship occupations in the US are projected to grow by 22.5% (Bureau of Labor Statistics)



Laborers prepare and set the subgrade, rake, shovel, patch, and seal the road surface on heavy highway projects.

Safety is first and foremost in everything a Laborer does. We look after everyone on the job by setting up safety zones and training flaggers to direct traffic through and around workites. We also look after the environment by installing and monitoring erosion control methods around the worksite (which helps keep dirt and pollutants from getting into our water systems).

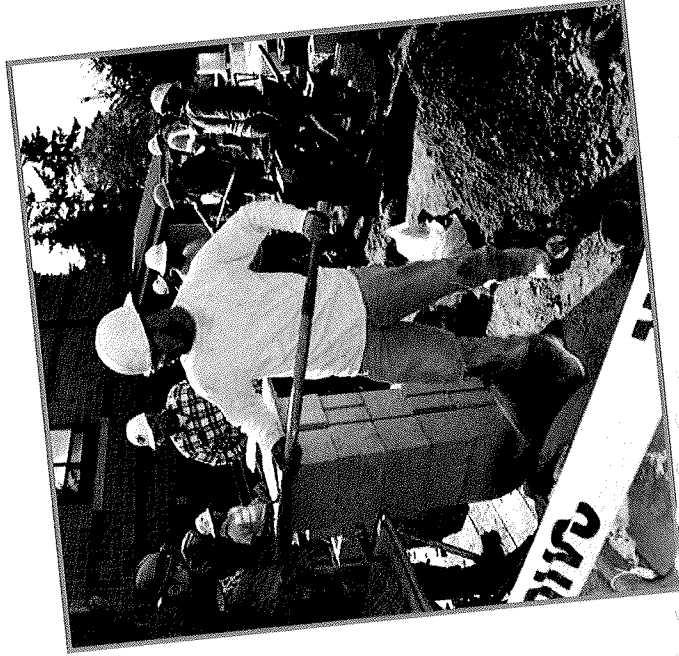
In the bridges industry, Laborers are responsible for preparing the site, running the chutes and nozzles off concrete trucks, placing, vibrating, and raking the “mud” once it has been poured, and then cleaning up afterwards.

Did you know?

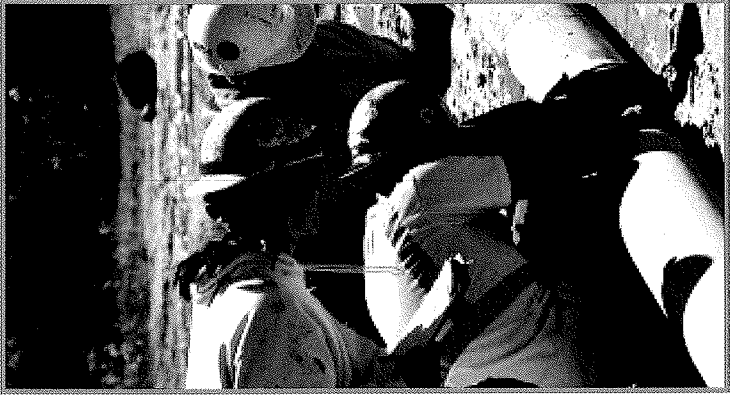
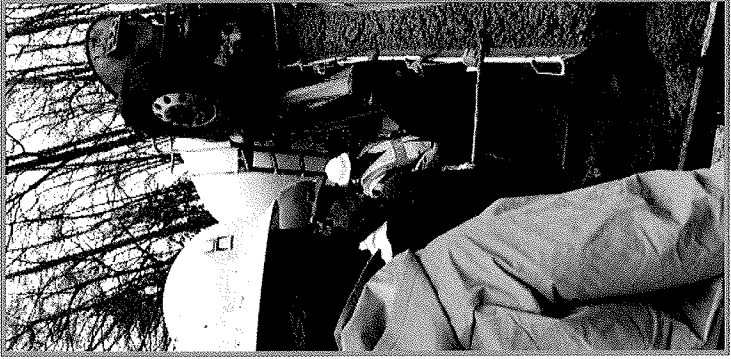
The construction industry needs 240,000 craft professionals every year to keep up with project demands nationwide.

(Northwest LEFT)

Heavy Highway



Apprentices in mason tending and basic concrete classes.



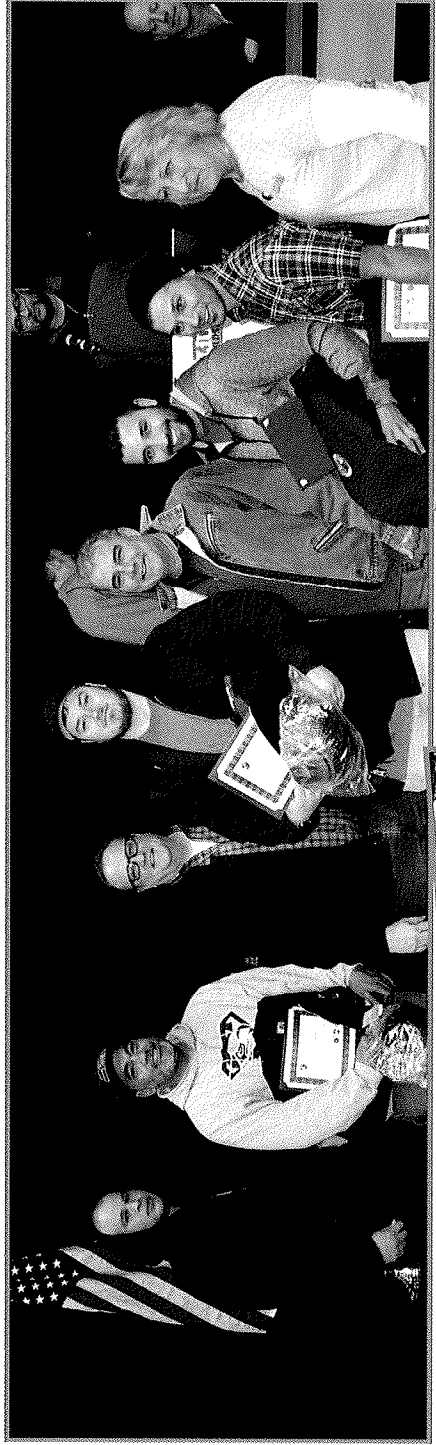
Construction Craft Laborers (CCL, or “Laborers”) have a proud history of being major contributors to all stages of construction projects. From the roads and bridges you travel over to the buildings you work in, the airports you fly to and from or the stadium from which you cheer your favorite team on, chances are a Laborer had a hand in creating it. Cleaning and preparing construction sites for the erection of buildings and tunnels, unloading and loading materials, running a forklift, or mixing and pouring concrete are just a few of the essential jobs we perform.

Laborers boast a variety of skills. We may operate lasers, erect scaffolding, or help keep your environment safer by demolishing structures and removing hazardous materials. We also operate pavement breakers, jackhammers, plaster mixers and pneumatic drills, just to name a few! Being a Laborer is physical, but very rewarding work.

Did you know?

Construction-related jobs account for approximately 66 percent of all jobs in the United States.
(Northwest LEFT)

Building



Our Union Strong brothers and sisters from throughout the region:
When you graduate, you receive a LiUNA! hardhat, jacket and certificate.

WE ARE LIUNA!

Feel the Power

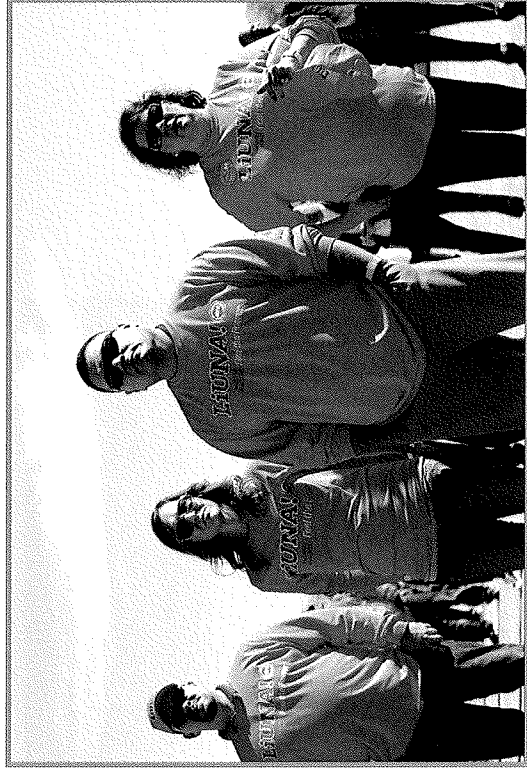
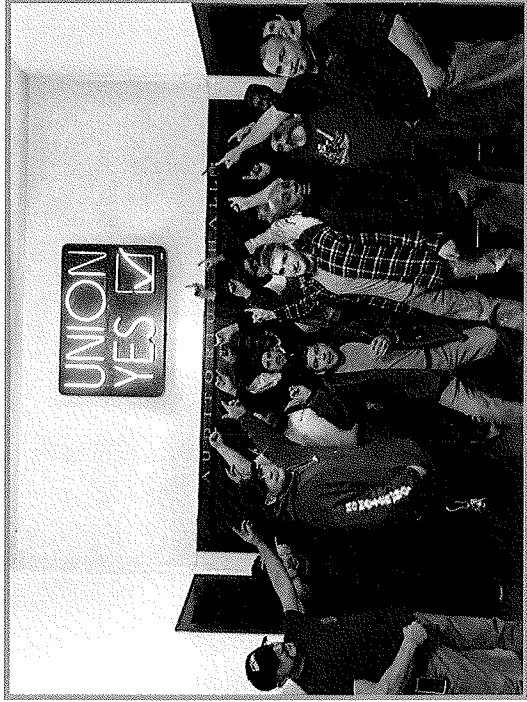
The Laborers' International Union of North America – is the most progressive, aggressive and fastest-growing union of construction workers, and one of the most diverse and effective unions representing public service employees.

LIUNA members are on the forefront of the construction industry – a sector that is a powerhouse of 12 million workers producing 5 percent of our countries' economic output.

A half-million strong, we are united through collective bargaining agreements which help us earn family-supporting pay, good benefits and the opportunity for advancement and better lives.

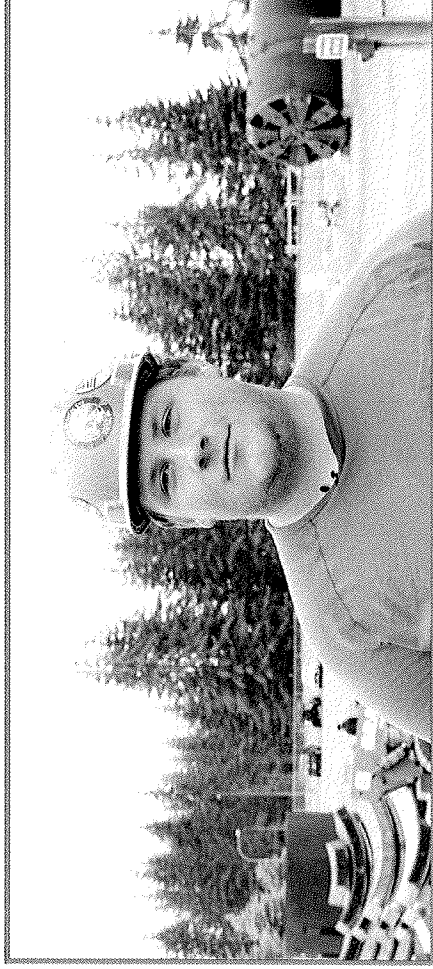
The Northwest Region is the largest geographical region in the Laborers' International Union. We represent over 46,000 working people of many different ages and in many different occupations. For example, we represent workers in construction, hazardous waste remediation, health care, education, maintenance, food service, shipyards, clerical, aviation, and state and local governments.

Our region has 23 local unions, five district councils, and 13 dedicated training facilities that offer training topics ranging from short duration job site health and safety classes to intense full-fledged, hands-on skills training and certifications. Mobile onsite training, which delivers training to contractors' facilities or construction job sites, is another aspect that our region has developed to meet our employers' manpower and training needs.

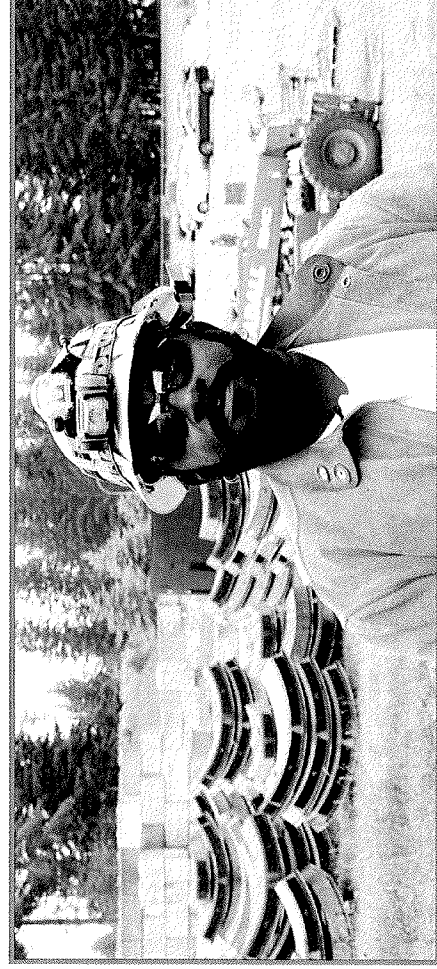


Who are the Laborers?

Apprenticeship Testimonials

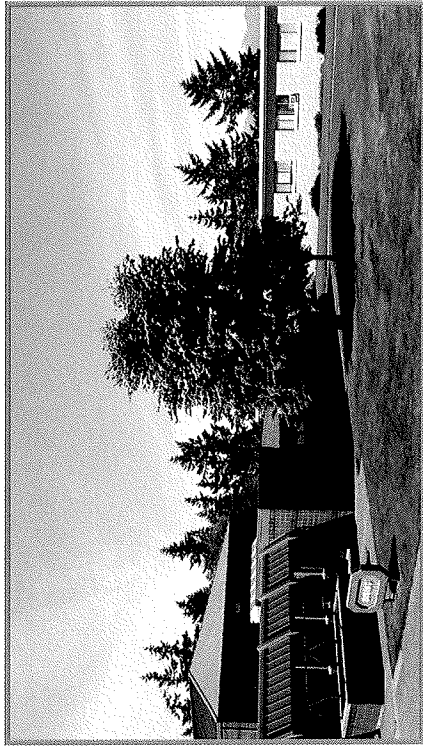
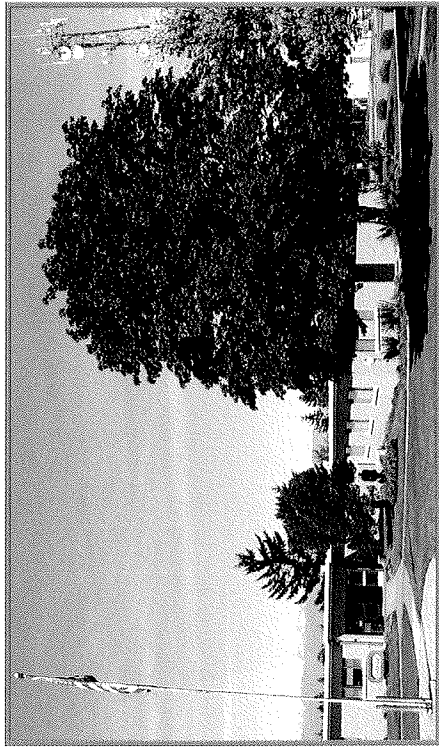
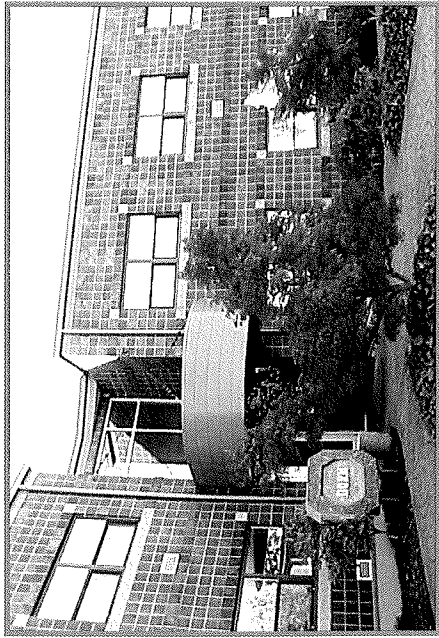


"I joined the Laborers to get my foot in the door in construction and start a career for myself. I enjoy the pay and I do some pretty fun stuff at work, I torch, I take down a lot of big stuff. I do demolition so it's pretty enjoyable."
-Justin Meier, Apprentice



"Great pay, great benefits and experience. I have some friends who are apart of the union, and they told me if you want stability and great pay and all of that good stuff, so I went and signed up. You're always learning something, like demolition, concrete, different tools, certain equipment that we train with."

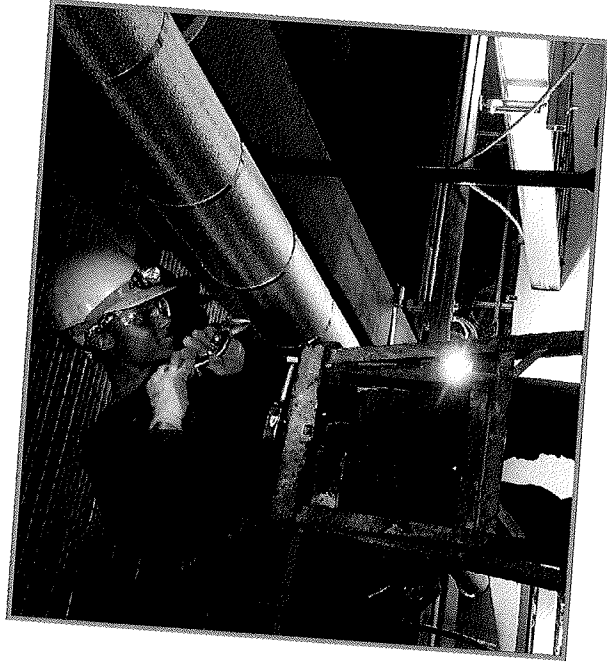
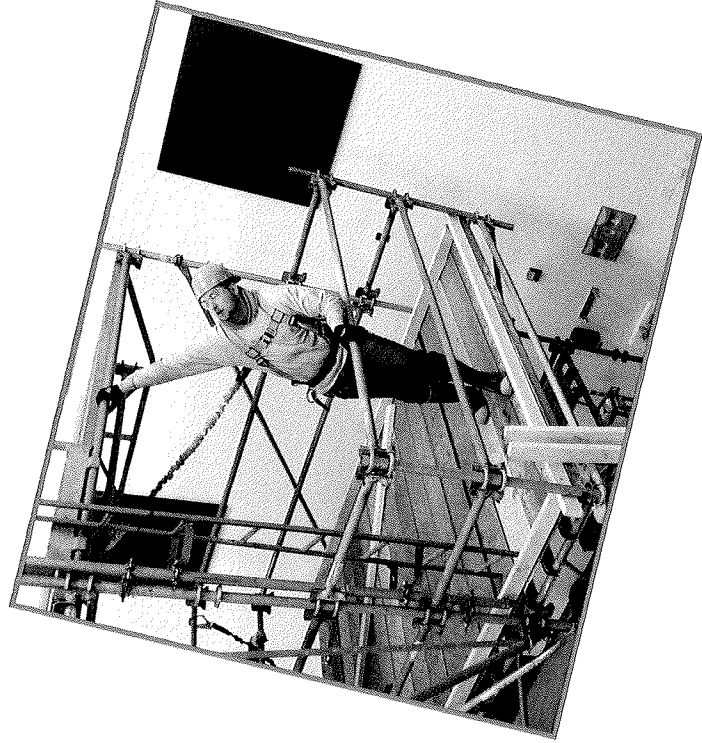
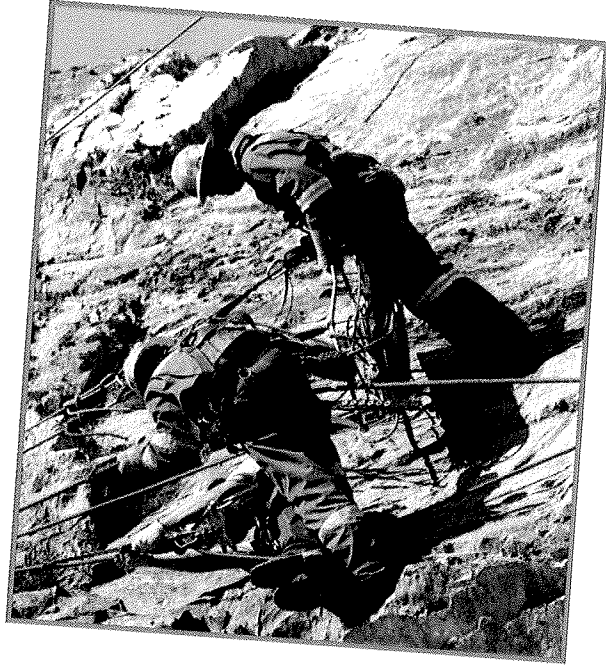
Collin Davy, Apprentice



The Northwest Laborers-Employers Training Trust has been around since 1983. When you are accepted into the program as an apprentice, you are making a commitment to 6,000 hours of on the job training, and 480 hours of related supplemental classroom instruction. While working in the field, you are being paid. As you work through the program, and attend training, your wages will increase. Every 1000 hours you work in the field, you are required to attend 80 hours of training. When you are at the training facility, located in Kingston, you will be housed in the dorm rooms, and fed three hearty meals a day, at no cost to you. Training at the school is considered classroom time, however, half of your time will be spent outdoors, perfecting your new skill, with instructors who are professionals. This training will never cost you money, even as a journeyworker. NW LETT has over 90 skills classes to choose from. As an apprentice you will also become a member of the Laborers' International Union of North America (LIUNA). When you complete the program, you will receive your journeyworker certificate. This will give you the opportunity to work as a journeyworker anywhere in the country!

To apply for the Laborers' Apprenticeship program you will need to meet our minimum qualifications. You must be at least 18 years of age, have a valid driver's license, have proof of successful completion of the 10th grade (GED or high school diploma), be able to pass a drug test and have the physical ability to perform the work of a Construction Craft Laborer. To apply, please contact the Local Union nearest you, or contact the training center for further information!

Apprenticeship Program



Local 238 - Spokane

Luis Licea

Tel: 509-328-6660

1330 N Calispel Street
Spokane, WA 99201

Kingston Main Campus

Tel: 360-297-3035

Toll Free: 800-240-9112

27055 Ohio Avenue
Kingston, WA 98346

Website: www.nwlett.org

Local 242 - Seattle

Mike Kuntz

Tel: 206-441-0470

22323 Pacific Highway S
Des Moines, WA 98198

Spokane Site

Tel: 509-467-5239

3921 East Francis Avenue
Spokane, WA 99217

Local 252 - Tacoma

Jeremy Clevenger

Tel: 253-383-1493

4803 South M Street
Tacoma, WA 98408

West Jordan, UT Site

Tel: 801-280-7195

5667 Dannon Way
West Jordan, UT 84088
Jesse Loose – Site Coordinator

Local 292 - Everett

Tawny Sayers

Tel: 425-259-5077

2810 Lombard Avenue, Suite 100
Everett, WA 98201

Local 295 - Utah

Jesse Loose

Tel: 801-972-5380

2261 S Redwood Road, Suite S
Salt Lake City, UT 84119

Local 335 - Vancouver

Jeremy Clevenger

Tel: 360-695-3318

2212 NE Andresen Road
Vancouver, WA 98661

Local 348 - Richland

Luis Licea

Tel: 509-420-4581

2505 Duportail Street
Richland, WA 99352



Laborers' Local 242 building.

TIJNA!

LNW LECET

Laborers' Employers Cooperation and Education Team
Northwest Cooperation Fund

Northwest Region

Feel the Power

