

Whatcom County Broadband

New Proposed Projects and WSBO
Grants

Port of Bellingham and Whatcom
County PUD #1



Proposed New Projects for 2023

- Seeking funding for two projects:
 - Mainland Project
 - Point Roberts Project
- Project 1 Mainland:
 - \$12 million grant from WSBO
 - Total build is 187 miles of fiber to the home/1384 homes passed.
 - Asking for a \$ 4 million contribution to the new project
 - Total budget \$ 15,998,659.53
- Project 2 Point Roberts:
 - \$3.5 million grant from WSBO
 - \$350,000 matching funding
 - 1,274 homes passes
 - Total budget: \$3.5 million
- Total for both projects:
 - \$ \$19,498,659.53

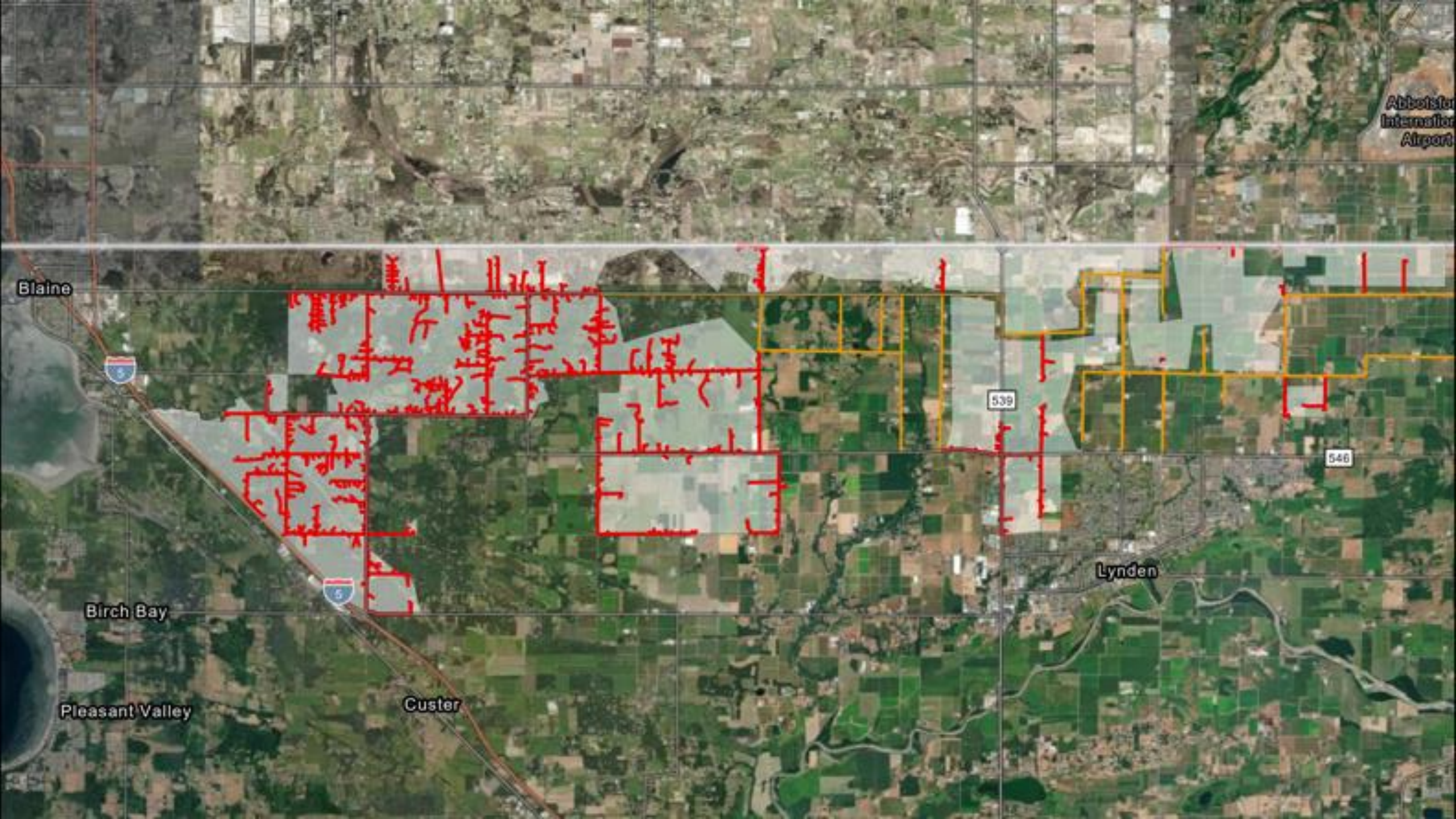
Expanded North Project

- Located East of Blaine
- Reaches the unserved and underserved areas not served in the North Lynden project
- Is approximately 99.36 Miles fiber to the premise project
- Passes 804 homes



Demographics

	% of Population below Poverty (13.% = national average)	Median Household Income*	Median home Value **	Whatcom County Digital Divide Index Infrastructure/Adoption Score	Whatcom County Digital Divide Index Socioeconomic Score
PORT Projects	Range from 1.5% to 14%	\$55,415	\$280,682	27.8	27.24
PUD – Point Roberts	10.10%	\$61,447	\$357,258	22.01	23.47



Abbotston
International
Airport

Blaine



539

546

Lynden



Birch Bay

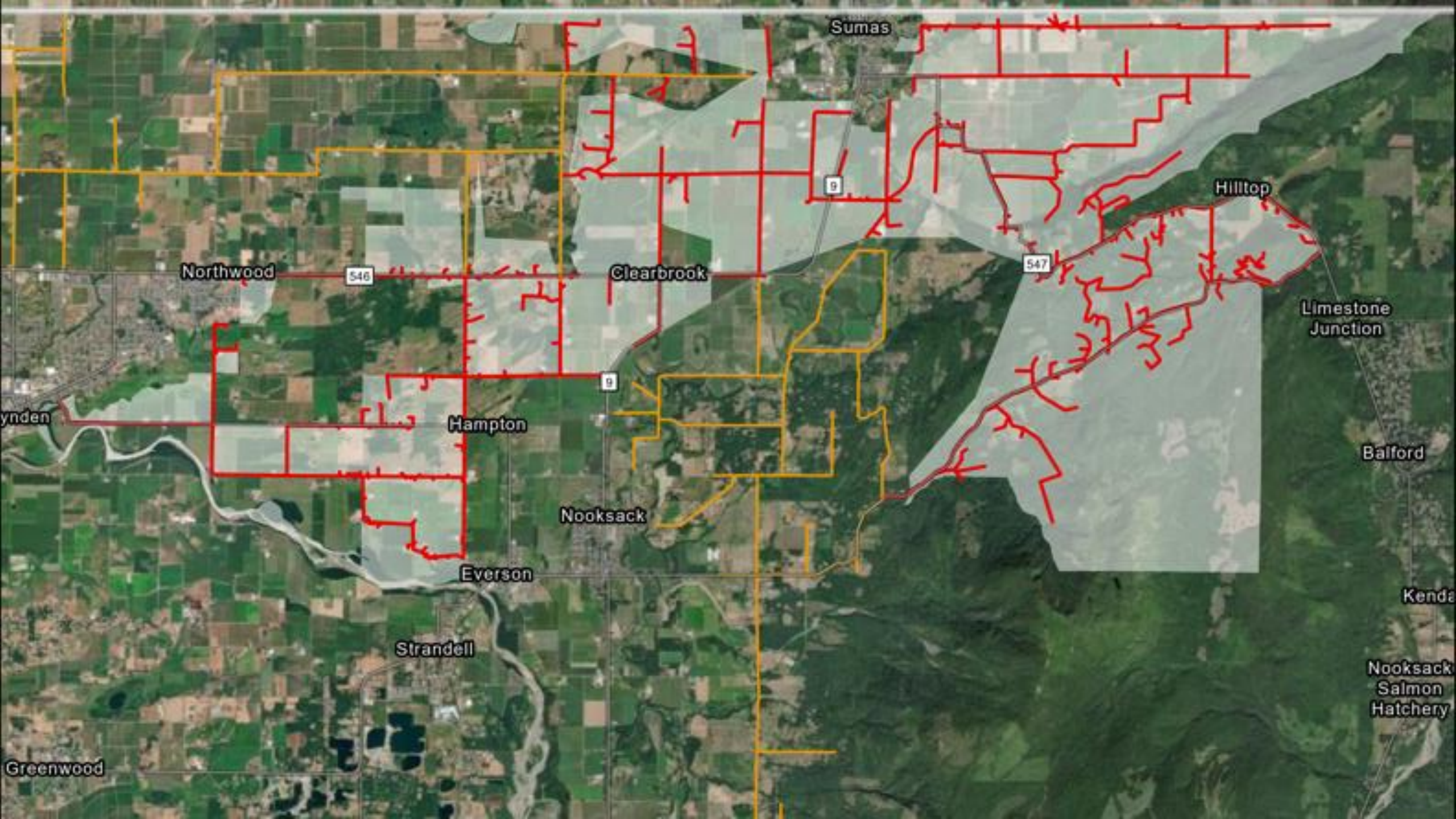
Pleasant Valley

Custer

Expanded East Project

- Reaches homes of unserved and underserved not reached by the north Lynden and E Nooksack
- 87.7 miles FTTP fiber project
- Passes 580 homes





Sumas

Hilltop

Northwood

546

Clearbrook

9

547

Limestone Junction

Lynden

Hampton

9

Balford

Nooksack

Everson

Kendall

Strandell

Nooksack Salmon Hatchery

Greenwood



Point Roberts Project

- A PUD fiber to the premise project
- Total Project Cost is \$3.3 million
- Will pass 1,274 locations
- Asking for a match of \$350,000





1 Ave

Boundary Bay

Boundary B.

Point Roberts
Golf & Country
Club

Johnson Rd

Tyee Dr

Point Roberts

Boundary Bay Rd

Apa Rd

Apa Rd

Lighthouse
Marine Park