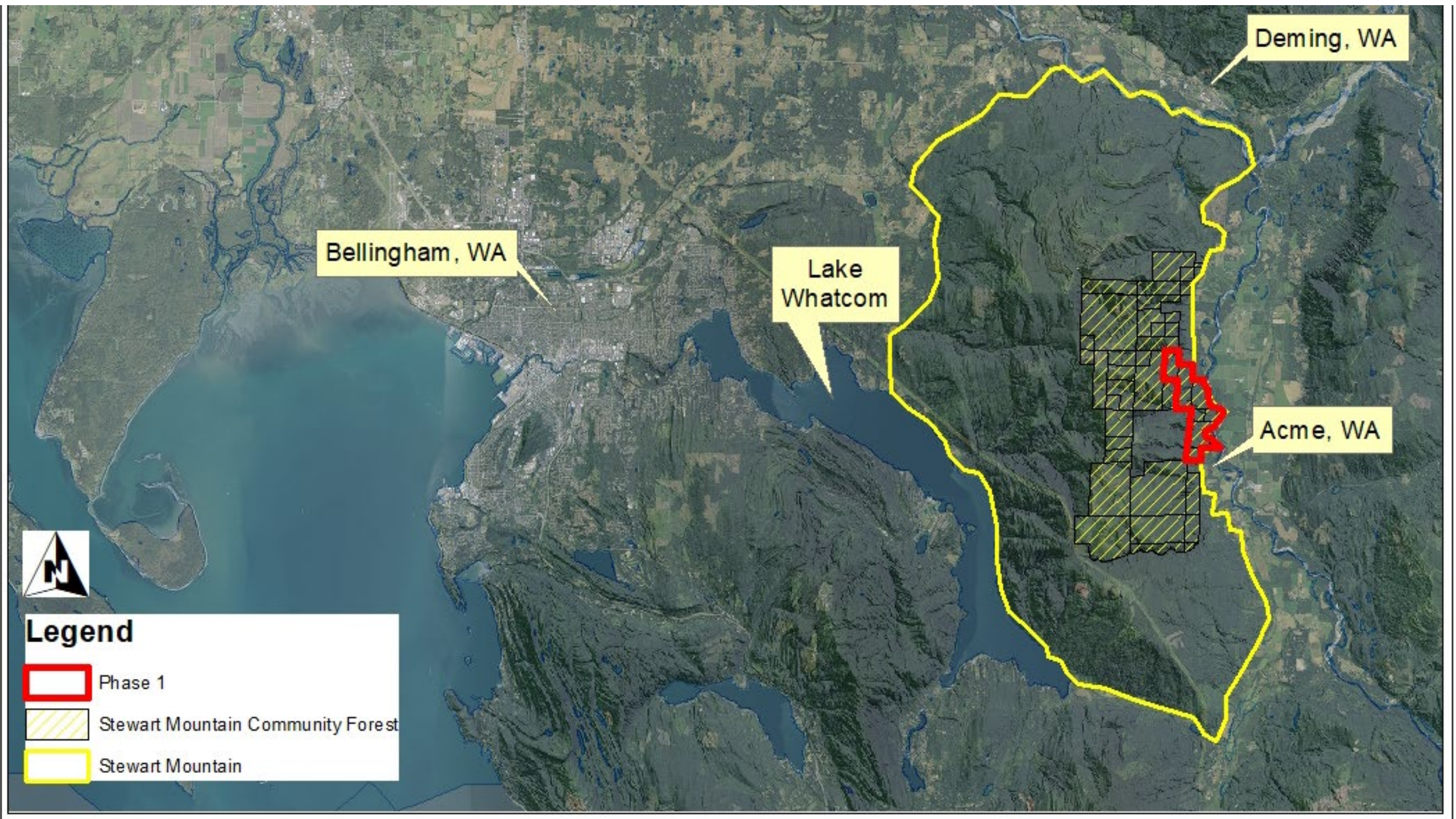


A scenic landscape photograph of a forested mountain range. The foreground is dominated by a dense, lush green forest of evergreen trees. In the middle ground, a valley opens up, showing more forested hillsides. In the background, a range of mountains with significant snow cover stretches across the horizon under a bright blue sky with scattered white clouds. The overall scene is bright and clear, suggesting a sunny day.

STEWART MOUNTAIN COMMUNITY FOREST

**Whatcom County
March 5, 2024**

AB 2024-161



Deming, WA

Bellingham, WA

Lake
Whatcom

Acme, WA



Legend



Phase 1



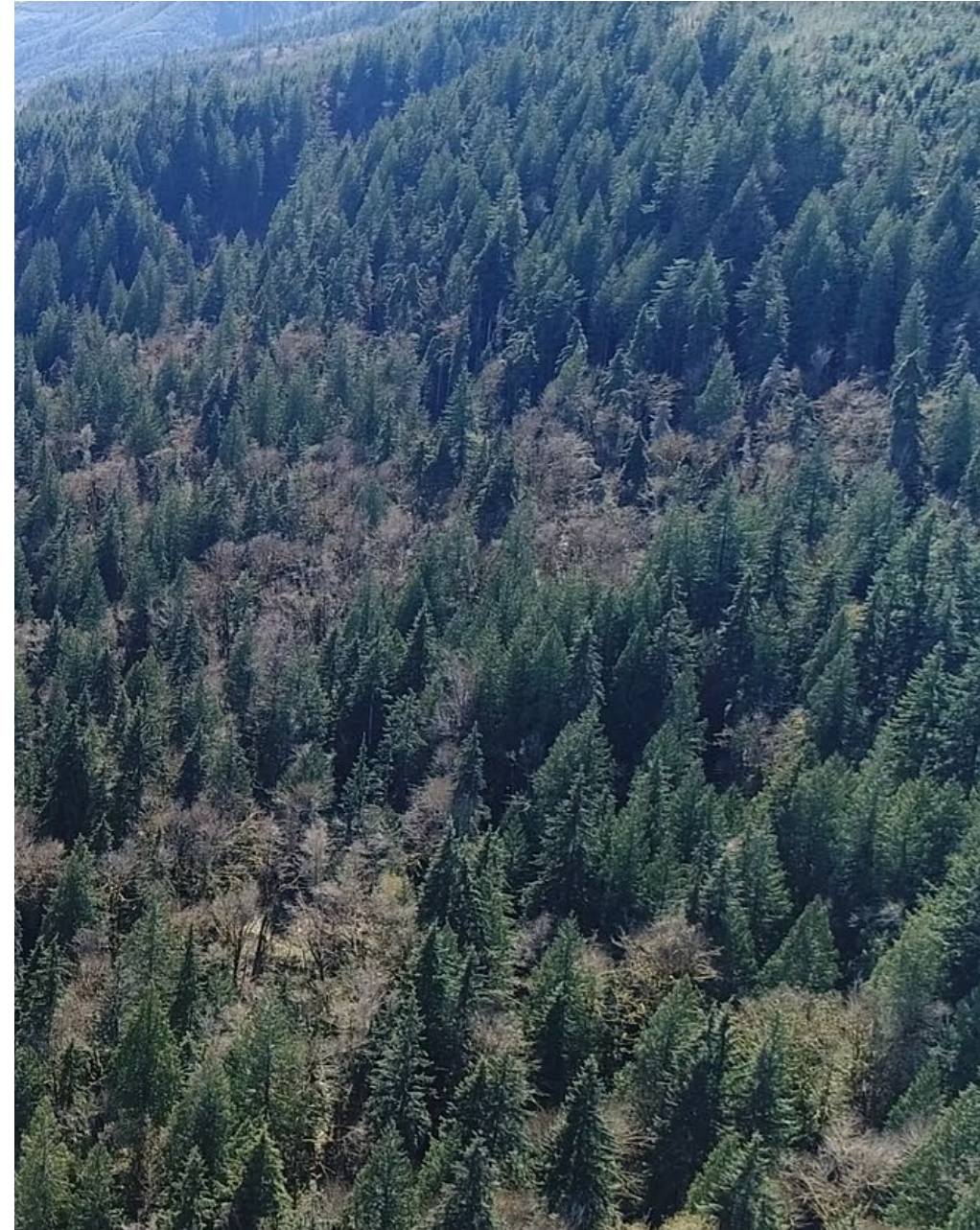
Stewart Mountain Community Forest



Stewart Mountain

Primary Goals

1. Enhance watershed health and improve water quality and quantity.
2. Promote an ecological forestry-based economy for living-wage jobs.
3. Increase biodiversity and enhance fish and wildlife habitat.
4. Expand community access for cultural uses and non-motorized recreation.



Stewart Mountain Community Forest

Strategic Vision Framework

May 2023



<https://stewartmountaincf.org/>

Schedule:

- Phase 1 - 550 acres acquired October 2022
 - Phase 2 – estimated 2,500 acres
 - March 2024
 - \$3 million RCO Community Forest Grant Authorization
 - Whatcom Land Trust application – County signatory
 - June 2024
 - \$5.517 million Streamflow Restoration Grant
 - July 2024 – May 2025
 - Council/Community engagement re: Phase 2
 - Staff completion of required acquisition steps
 - June 2025
 - Target closing date
- 
- An aerial photograph of a river valley. The river flows through the center, surrounded by lush green fields on the left and dense, dark green forests on the right. In the background, rolling hills and mountains are visible under a clear sky. The image is partially obscured by a semi-transparent white box containing text.

Stewart Mountain Community Forest

De

Bellingham, WA

South Fork
Nooksack
River Valley



Legend

-  Proposed Stewart Mountain Community Forest
-  Private Timber - Conservation Forestry LLC
-  Whatcom County - Lake Whatcom Park
-  Department of Natural Resources

