

RECEIVED

SEP 10 2018

WHATCOM COUNTY COUNCIL

APPLICATION FOR FRANCHISE

TO THE WHATCOM COUNTY COUNCIL:

COMES NOW, Glenhaven Lakes Club inc.

who respectfully petitions the Whatcom County Council for a twenty-five (25) year franchise to lay, construct, maintain, and repair

Waterline / water system

and all necessary appurtenances along, over, and across the following roads situated in Whatcom County, Washington:

See maps

The petitioner further requests that the Whatcom County Council fix a time and place for a public hearing on the granting of this continuation of franchise, and that public notice be given, at the expense of the petitioner, as provided by law; and that, at said hearing, petitioner be granted the franchise continuation herein requested.

DATED: _____

Glenhaven Lakes Club inc.
Company Name

664 Rainbow Dr.
Mailing Address

Sedro Woolley Wa 98284
City State Zip

360 595-2061
Phone Number

Beverly A. Crouter
Signature of authorized agent/owner

Beverly A. Crouter
Print or type name

EXHIBIT A

GLENHAVEN LAKES CLUB WATER ASSOCIATION FRANCHISE

Exhibits B through K are identified as follows:

Exhibit B	Plat Map of Glenhaven Lakes with all roads included in the franchise so indicated
Exhibit C	Glenhaven Lakes, Division Number 2
Exhibit D	Glenhaven Lakes, Division Number 3
Exhibit E	Glenhaven Lakes, Division Number 4
Exhibit F	Glenhaven Lakes, Division Number 5
Exhibit G	Glenhaven Lakes, Division Number 5
Exhibit H	Glenhaven Lakes, Division Number 6
Exhibit I	Glenhaven Lakes, Division Number 7
Exhibit J	Glenhaven Lakes, Division Number 8
Exhibit K	Glenhaven Lakes, Division Number 12
Exhibit L	Glenhaven Lakes, Division Number 1
Exhibit M	Glenhaven Lakes, Division Number 9

Exhibit L

P-926

GLENHAVEN LAKES

Division 1

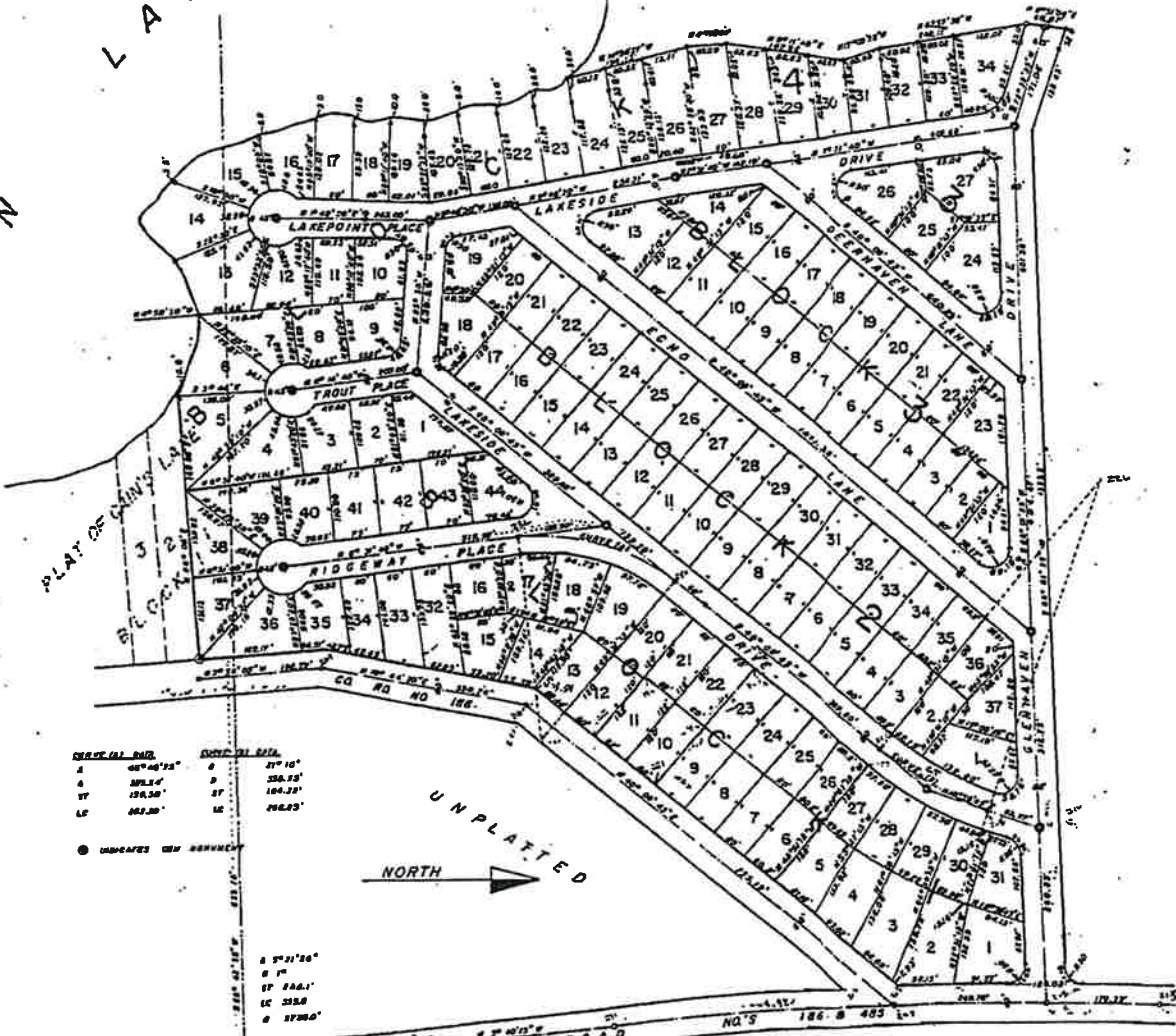
SECTION 32, T37N, R4E, W. M.

WHATCOM COUNTY, WASHINGTON

SCALE 1" = 100'

UNPLATTED

C A I N L A K E



SECTION 32, T37N, R4E, W. M.	SECTION 32, T37N, R4E, W. M.
1 05° 40' 20"	8 27° 10"
2 05° 40' 20"	9 25° 10"
3 05° 40' 20"	10 10° 10"
4 05° 40' 20"	11 05° 40' 20"

● INDICATES NEW SURVEY

NORTH →

NOTE:
 ALL LOTS WITHIN THIS PLAT OF GLENHAVEN LAKES SHALL BE SUBJECT
 TO THE REGULATION OF CONSERVED WATERSHEDS AS REQUIRED BY
 THE OFFICE OF THE COUNTY AUDITOR OF WHATCOM COUNTY,
 WASHINGTON IN 2002. OF ORDER, ADITY 816

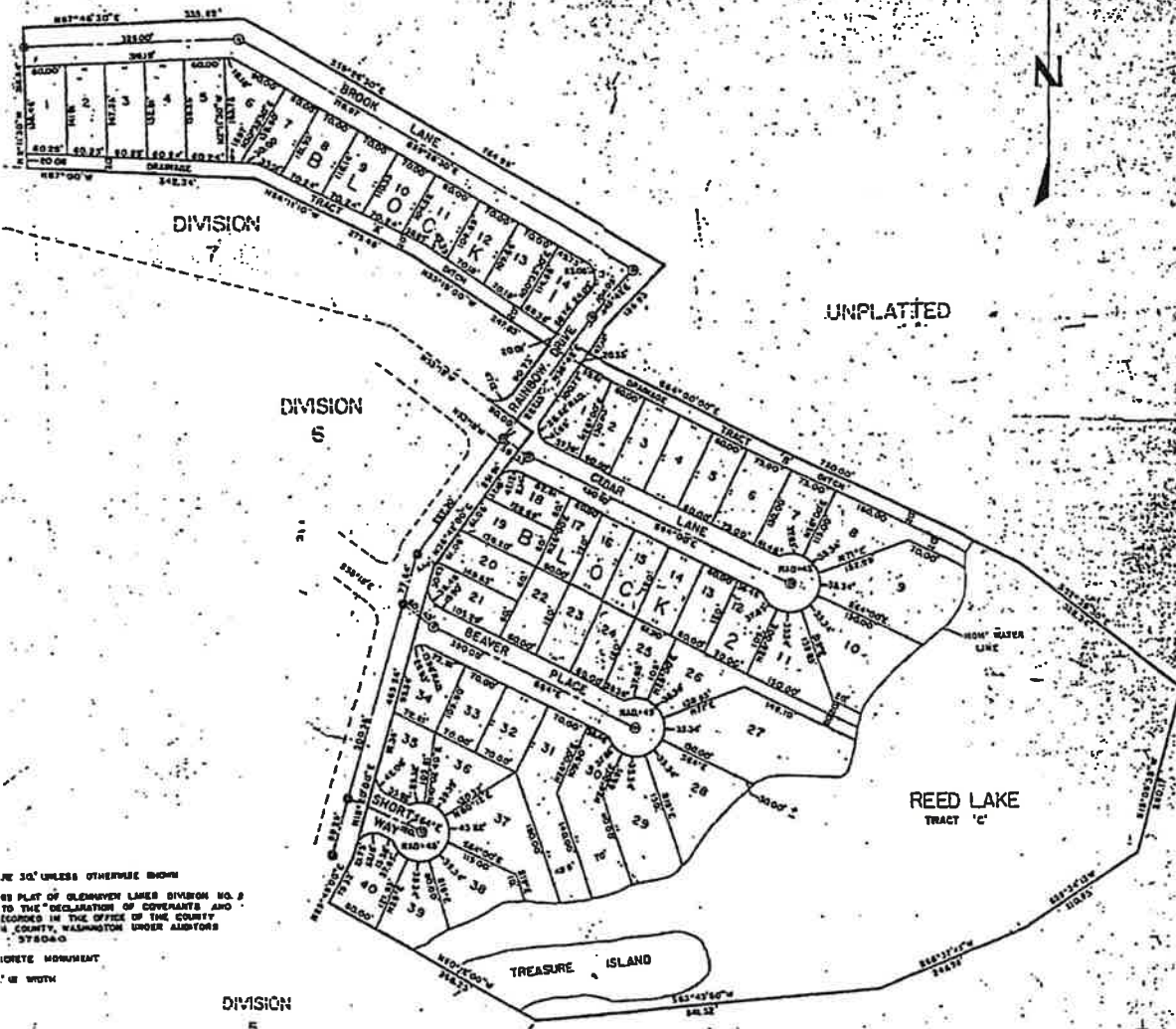
- 1 0° 44' 20"
- 2 1°
- 3 45° 00'
- 4 0° 00'
- 5 37° 00'
- 6 1°

UNPLATTED

GREENHAVEN LAKES
 DIVISION NUMBER 8
 SECTION 29 T37N R4E W4M

SCALE 1" = 100'

BOOK 7



UNPLATTED

REED LAKE
TRACT 'C'

BE 30' UNLESS OTHERWISE SHOWN
 BE PLAT OF GREENHAVEN LAKES DIVISION NO. 8
 TO THE DECLARATION OF COVEYANTS AND
 COVENANTS IN THE OFFICE OF THE COUNTY
 CLERK, WASHINGTON UNDER AMBROS
 37824-0
 MONUMENT
 BE WITH

GLENHAVEN LAKES
DIVISION NUMBER 6

SECTION 29, T37N, R4E, W.M. WHATCOM COUNTY, WASH.

SCALE 1" = 100'

EXHIBIT B

5

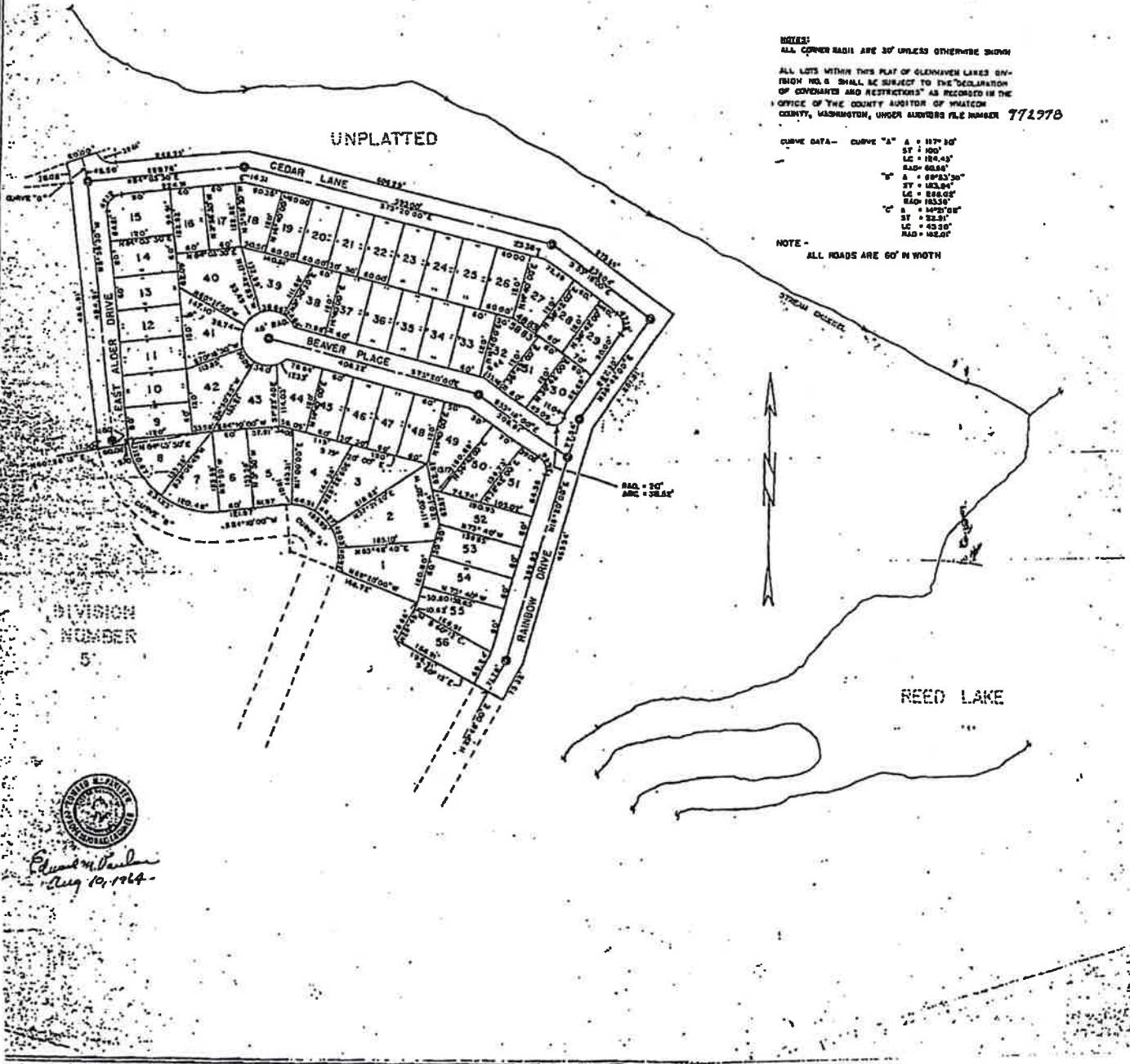
UNPLATTED

NOTES:
ALL CORNER RADI ARE 30' UNLESS OTHERWISE SHOWN

ALL LOTS WITHIN THIS PLAT OF GLENHAVEN LAKES DIVISION NO. 6 SHALL BE SUBJECT TO THE "DECLARATION OF COVENANTS AND RESTRICTIONS" AS RECORDED IN THE OFFICE OF THE COUNTY AUDITOR OF WHATCOM COUNTY, WASHINGTON, UNDER AUDITOR FILE NUMBER 77197B

CURVE DATA— CURVE "A" Δ = 117° 30'
ST = 100'
LC = 184.43'
RAD = 68.84'
"B" Δ = 89° 33' 30"
ST = 103.94'
LC = 88.60'
RAD = 73.50'
"C" Δ = 147° 00'
ST = 22.31'
LC = 42.20'
RAD = 148.07'

NOTE— ALL ROADS ARE 60' IN WIDTH



DIVISION
NUMBER
6



Edward M. Vanlan
Aug 10, 1964

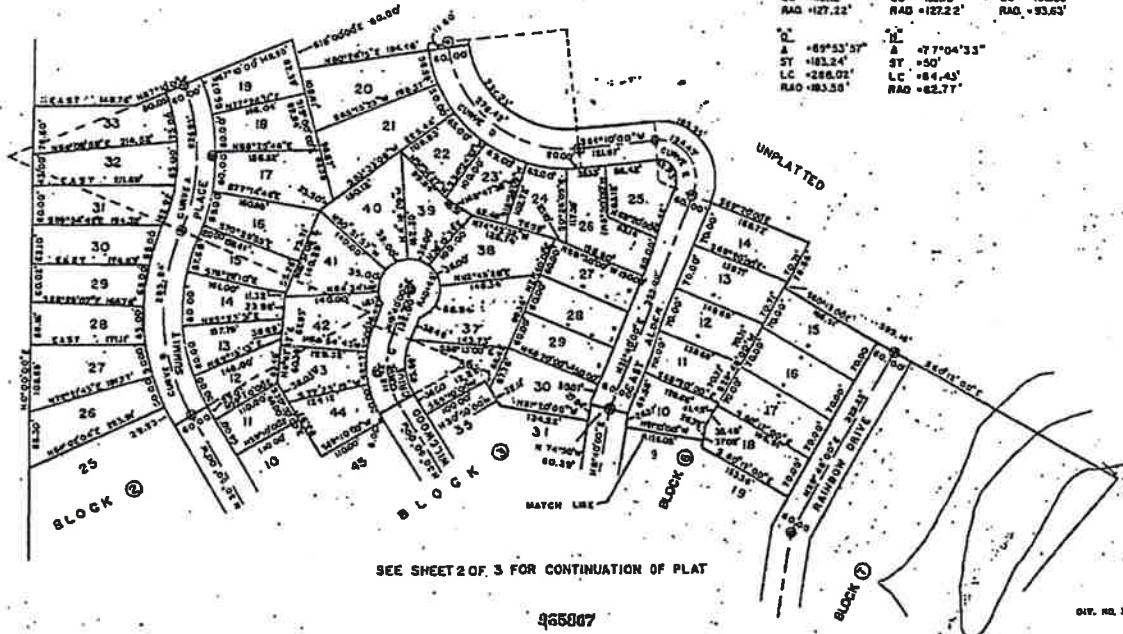
GLENHAVEN LAKES

SUBDIVISION

DIVISION NUMBER 5
SECTION 29 & 32, T37N, R4E, W. M.
WHATCOM COUNTY, WASHINGTON
SCALE 1"=100'

CURVE DATA

A = 46°	L = 117°30'	L = 68°03'51"
ST = 120'	ST = 80'	ST = 80'
LC = 224.93'	LC = 124'13"	LC = 108.54'
RAO = 282.70'	RAO = 60.68'	RAO = 88.85'
A = 54°	L = 50°30'	L = 71°50'08"
ST = 180'	ST = 80'	ST = 82.57'
LC = 295.94'	LC = 82.12'	LC = 141.85'
RAO = 314.02'	RAO = 127.22'	RAO = 113.90'
A = 50°30'	L = 50°30'	L = 83°18'11"
ST = 80'	ST = 80'	ST = 60'
LC = 182.12'	LC = 182.12'	LC = 108.58'
RAO = 127.22'	RAO = 127.22'	RAO = 83.63'
A = 89°53'57"	L = 87°04'33"	
ST = 182.24'	ST = 50'	
LC = 286.02'	LC = 84.45'	
RAO = 83.58'	RAO = 82.77'	



SEE SHEET 2 OF 3 FOR CONTINUATION OF PLAT

965007

DAY, NO. 3

NOTE:

1. ALL CORNER MARKS ARE 30' UNLESS SHOWN OTHERWISE
2. ALL LOTS WITHIN THIS PLAT OF GLENHAVEN LAKES DIVISION NO. 5 SHALL BE SUBJECT TO THE "DECLARATION OF COVENANTS AND RESTRICTIONS" AS RECORDED IN THE OFFICE OF THE COUNTY AUDITOR OF WHATCOM COUNTY, WASHINGTON, UNDER AUDITOR FILE NUMBER 96500
3. Ⓞ INDICATES CONCRETE MONUMENT

GLENHAVEN LAKES

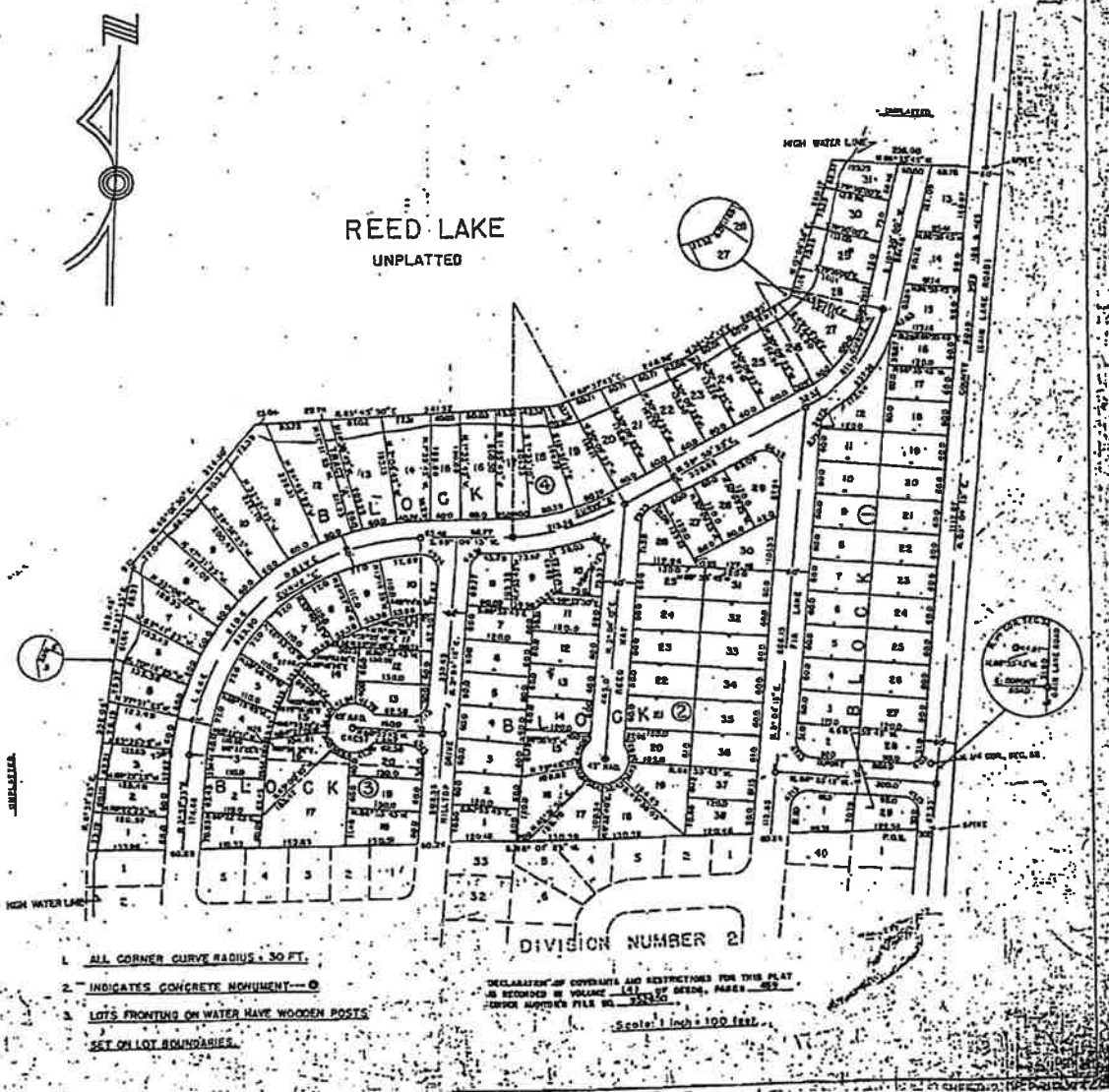
DIVISION NUMBER 3
 SECTIONS 29 & 32, T37N, R4E, W. M.
 WHATCOM COUNTY, WASHINGTON.



REED LAKE
 UNPLATTED

CURVE DATA
 Δ = 49°25'35"
 ST = 112.53
 R = 245.85
 LG = 211.71

Δ = 84°25'40"
 ST = 384.77
 R = 423.36
 LG = 623.50

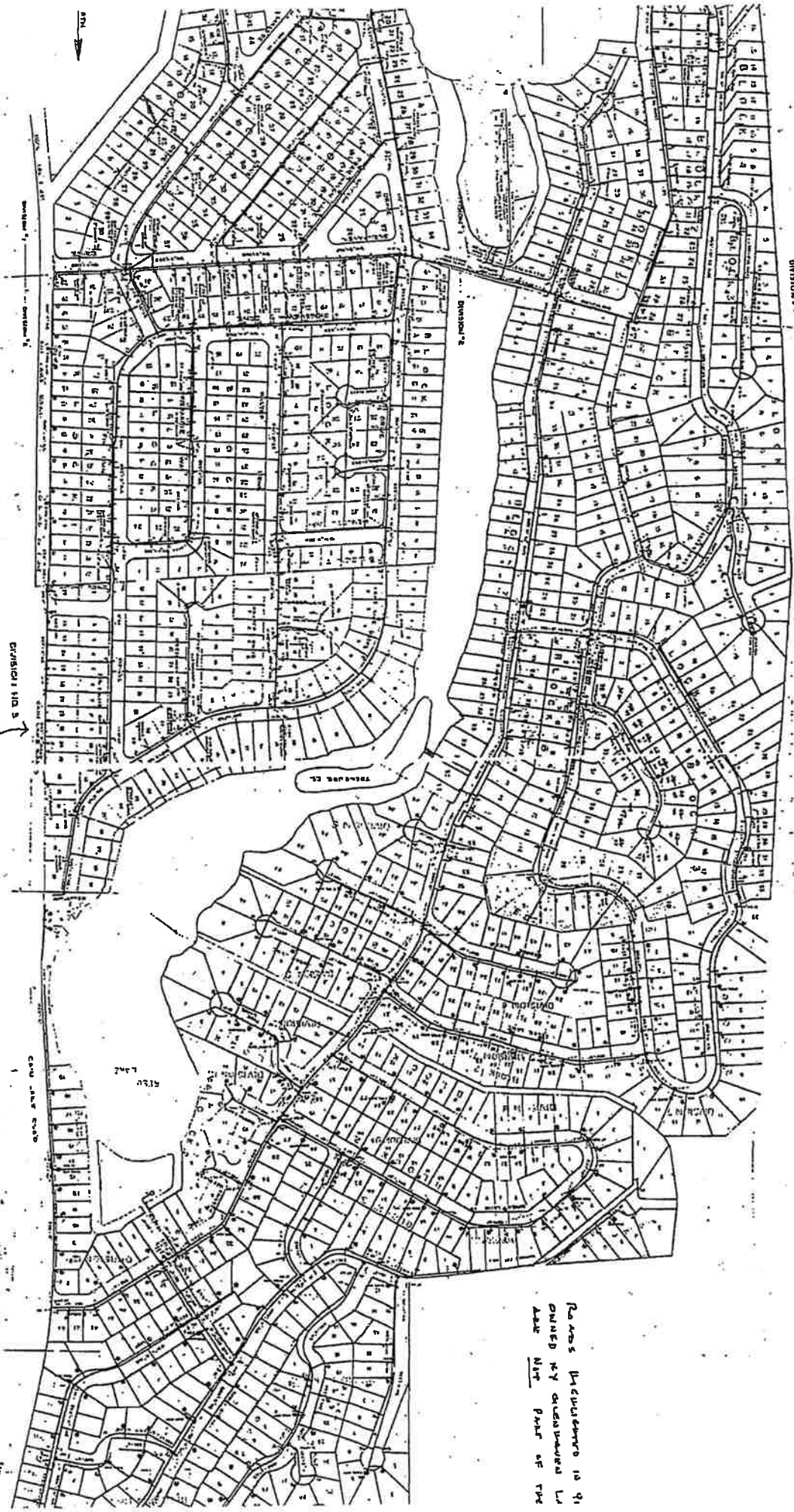


1. ALL CORNER CURVE RADIUS - 30 FT.
2. INDICATES CONCRETE MONUMENT - ⊙
3. LOTS FRONTING ON WATER HAVE WOODEN POSTS SET ON LOT BOUNDARIES.

DECLARATION OF COVENANTS AND RESTRICTIONS FOR THIS PLAT IS RECORDED IN VOLUME 181, OF RECORD, PAGES 522-523. SURVEY APPROX. FILE NO. 25330.

Scale: 1 inch = 100 feet.

ROADS INDICATED IN PINK INDICATE
EXISTING WATERWAYS WITHIN COUNTY L/U.



ROADS INDICATED IN PINK
SHOWN BY OUTLINES IN
THE MAP PART OF THE