

# Healthy Youth Survey Data 2025

Meghan Lelonek, MD

June 2, 2026

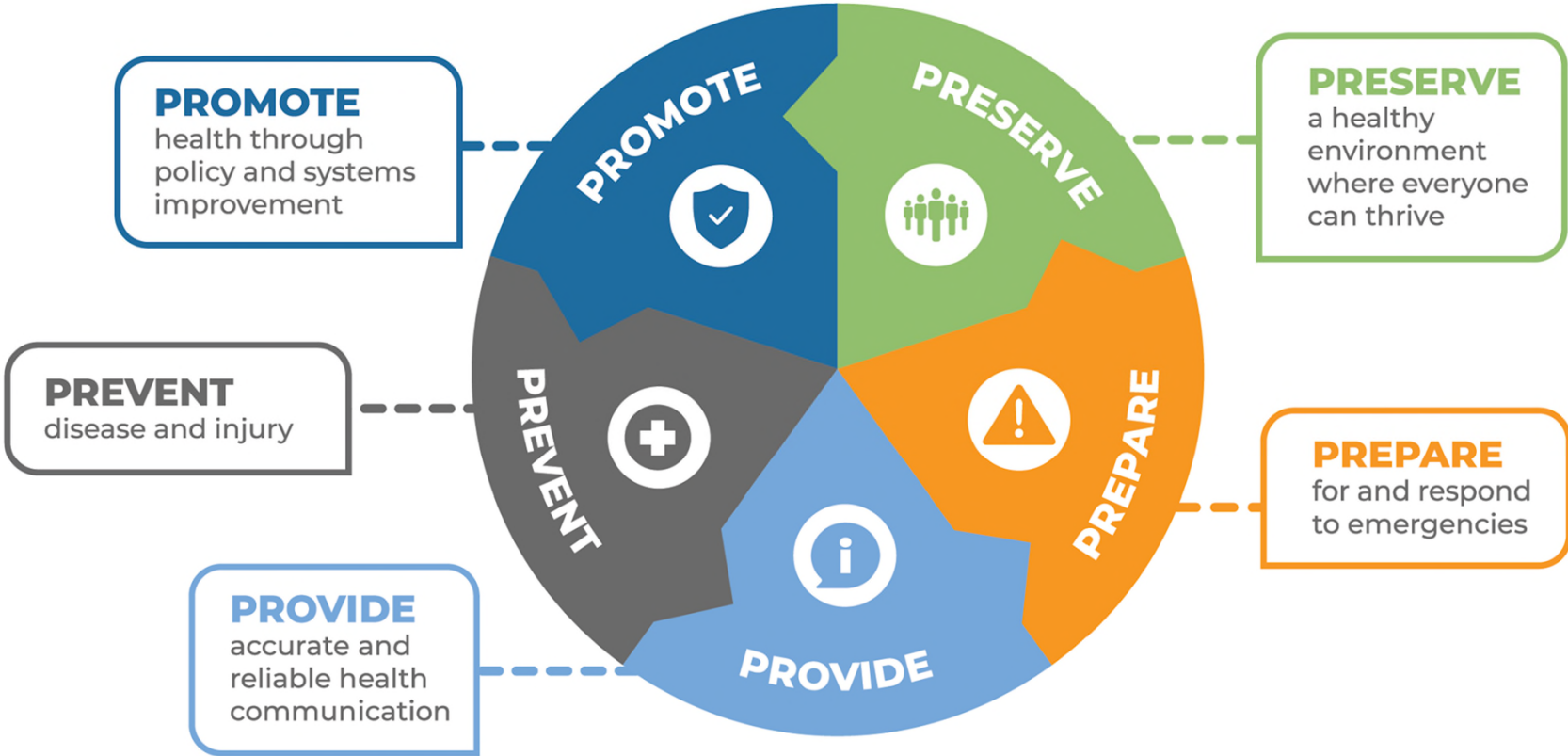
Joint Board of Health Public Health Advisory Board



WHATCOM COUNTY  
**HEALTH AND  
COMMUNITY  
SERVICES**



**OUR PURPOSE:** We serve Whatcom County by **ADVANCING EQUITY** & **PARTNERING WITH OUR COMMUNITY** to:



# Objectives

- Why is this important?
- What does the 2025 Healthy Youth Survey data show?
- What are some local prevention programs?

## PSYCHOLOGY

Understanding behavior, building resilience, and promoting mental well-being.



## NEUROSCIENCE

Exploring the brain and nervous system to inform prevention and support healthy development.



# PRIMARY PREVENTION

Preventing risk.  
Promoting health.  
Building a stronger future.

## MEDICINE

Using clinical knowledge and early intervention to prevent disease and promote overall health.



## EPIDEMIOLOGY

Studying data and trends to identify risks, inform strategies, and improve community health outcomes.



DEA

A MULTIDISCIPLINARY APPROACH TO PREVENTION



PROTECT



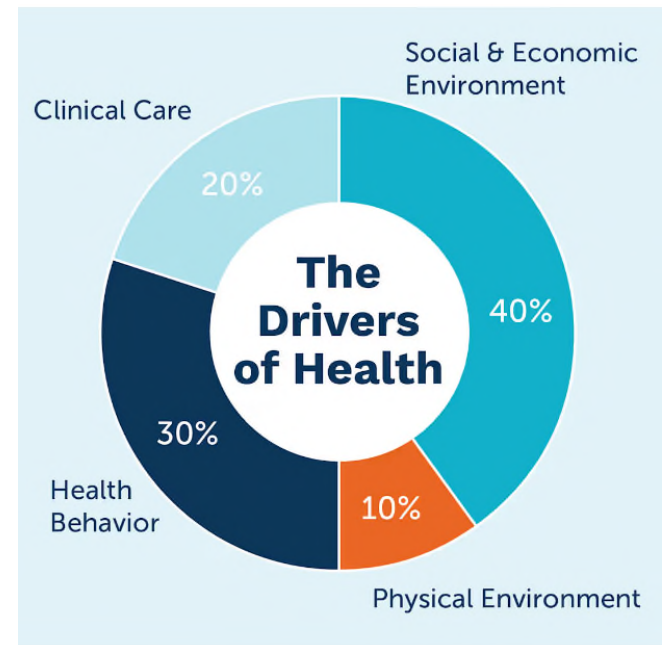
PREVENT



SUPPORT



Government, Schools, CBOs → Parks & Housing → Hospitals & Clinics



# The Prevention team

---





# Healthy Youth Survey

WHATCOM COUNTY  
HEALTH AND  
COMMUNITY  
SERVICES