

Community Health and Human Services

Ann Beck, Erin Schuldt, Amanda Burnett, Chris D'Onofrio

05.09.23

Whatcom County Council Public Works and Health Committee

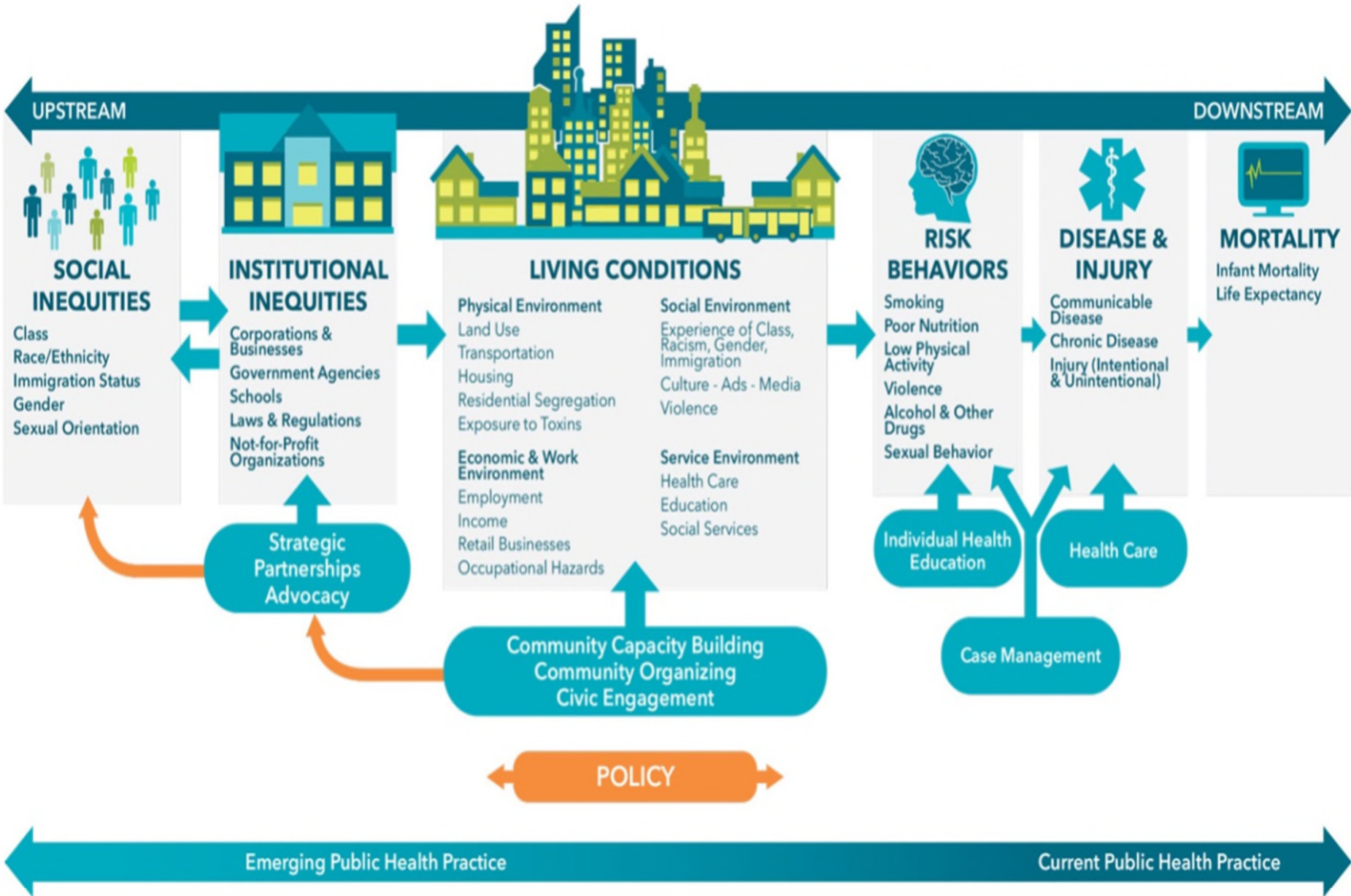


WHATCOM COUNTY
**HEALTH AND
COMMUNITY
SERVICES**



The People Behind The Work







Community Health Work

WHATCOM COUNTY
HEALTH AND
COMMUNITY
SERVICES



Nurse-Family Partnership Program

- Evidenced-based nurse home visiting program for first-time moms
- Pregnancy through age two
- Relationship based approach
- Promotes healthy start and healthy future
- Magic window



The NFP Approach

Our five client-centered principles:

1. The client is the expert on her life.
2. Follow the client's heart's desire.
3. Focus on solutions.
4. Only a small change is necessary.
5. Focus on strengths.

NFP Growth in Whatcom County

- Grown from 2 nurses in 2012 to a current team of 6 nurses.
- 2016 expansion grant from Thrive Washington in partnership with the Lummi Nation
- Investment from the County in 2018 for additional expansion
- Team includes one bi-lingual(Spanish/English) nurse and a nurse focused on serving Lummi Nation families



NFP Snapshot in Whatcom County

- 60 families served so far in 2023, 8 are non English speaking
- Clients range in age from 13-41 years
- 80% of clients were unmarried at program entry
- 32% of women have no H.S. diploma or GED at program entry

Community Health

Community Health focuses on the factors that affect a population's health. Community health is focused on reducing health disparities and encouraging healthy behaviors.





Four important goals of the Community Health Team:

1. Change the underlying factors that affect the community's health.
2. Make healthy choices easier.
3. Improve access to care.
4. Provide everyone with an equal chance at a healthy life.

Community Health Improvement



Community Priorities

Some Current Work Led by the CH Team

Cycle 2 2018-2026

- Early Childhood Well-being & Equity by focusing on:
- Child and youth mental health
 - Early learning & care
 - Housing for children & families

- Early parenting peer support
- CARE pilot to become trauma-informed, equity-focused organizations
- Early learning & care planning & support
- Reforming housing eligibility guidelines
- Healthy Children's Fund implementation

Cycle 1 2010-2018

- Healthy, Active Living
- Equity-focus on E. Whatcom & the LatinX population
- Access to Health Care
- Children & Families

- Food Systems Planning
- LatinX engagement
- Mount Baker School-Based Health Center
- Child and Family Well-being Task Force
- Perinatal Mental Health Task Force
- Children with special health care needs

Improve access to care.

- Mount Baker School Based Health Center
- Perinatal Mental Health
- Whatcom Taking Action
- Expand access to local developmental evaluations and supports



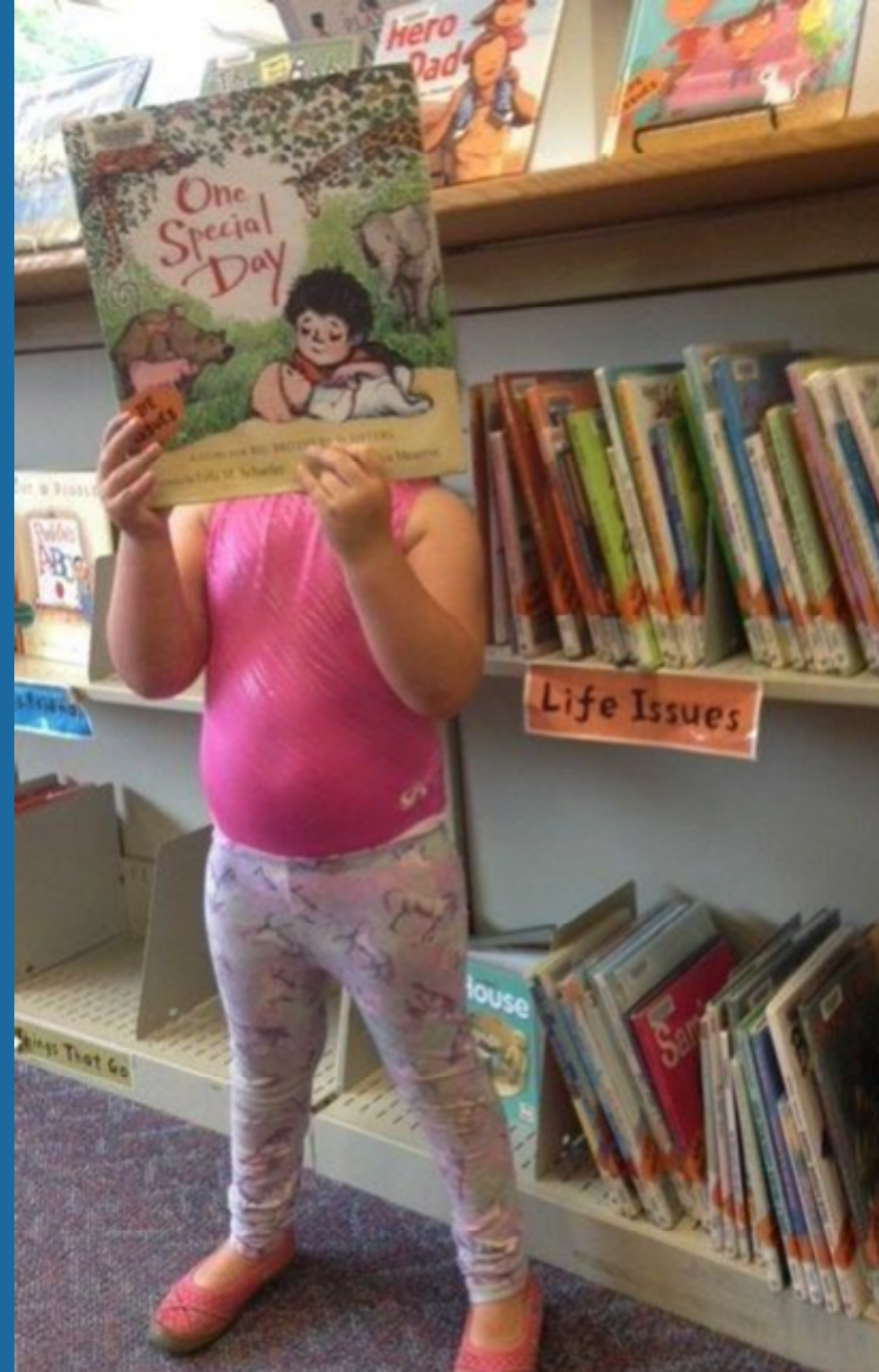
Make healthy choices easier.

- Universal ABA (Applied Behavior Analysis) form



Provide everyone with an equal chance at a healthy life.

- Early learning & care
- LatinX engagement





Human Services Work

WHATCOM COUNTY
HEALTH AND
COMMUNITY
SERVICES



DEVELOPMENTAL DISABILITIES PROGRAM

Program Goals:

- Increasing access to information and support for individuals with DD and their families
- Supporting advocacy efforts from individuals with DD and their families
- Increasing employment access and self-sufficiency for individuals with DD

How we get there:

- Child development services for infants and toddlers through the Single Entry Access to Services (SEAS) Program
- School to Work Program
- Pathways to Employment and Community Inclusion Services

VETERANS PROGRAM

Program Goals:

- Improve health outcomes for Whatcom County Veterans by
 - Connecting them to local, state, and federal benefits
 - Linking them to resources such as medical, mental health, social and employment services

How we get there:

- Veterans Service Officers
- Direct Financial Assistance
- Community Collaboration

PREVENTION PROGRAM

Program Goals:

- Promote healthy choices to increase youth resiliency and protective factors
- Prevent and reduce substance use and other harmful behaviors among youth
- Partner with school districts to keep youth with behavioral health and/or substance use disorder engaged in the education system

How we get there:

- Community Coalitions
- North Sound Region Youth Cannabis and Tobacco Prevention Program
- Professional development and community trainings
- Funding youth behavioral health services

HOUSING PROGRAM

Vision – Homelessness is rare, brief, non-recurring.

1. Centralized Point of Entry
2. Rapid Re-Housing
3. Permanent Supportive Housing
4. Affordable Housing Development
5. Prevention & Diversion
6. Interim Housing (Emergency Shelter)
7. Economic Security

Values – equity, opportunity, balance

**Working
in the
community
we live in.**

WHATCOM
HEALTH
COMMU
SERV



A photograph of a forest path. Two people are walking away from the camera. The person in the foreground is wearing a red and white striped jacket and grey pants. The person in the background is wearing a blue jacket. The forest is dense with tall trees and a ground covered in fallen leaves and moss. The text "Questions?" is overlaid in the center of the image.

Questions?