

County Council - Public Works and Health Committee – May 27, 2025
Public Informational Meeting

Whatcom County Coordinated Water System Plan Update



WHATCOM COUNTY
**HEALTH AND
COMMUNITY
SERVICES**



Outline

- Introductions
- Water Utility Coordinating Committee (WUCC)
- Coordinated Water System Plan (CWSP) Background
- Most Significant Updates from 2016/2019 CWSP
 - Section 3
 - Section 8
- Path Forward



Introductions



- County and Consultant Team
 - Whatcom County Health and Community Services - Sue Sullivan, others
 - RH2 Engineering, Inc. – Andy Dunn and Michele Campbell
- Water Utility Coordinating Committee (WUCC) Members
- Chair – Justin Clary– Lake Whatcom Water and Sewer District
- Vice Chair – Dave Olson – Water System Services, Inc.
- Past Vice Chair – Dan Eisses – Birch Bay Water & Sewer District
- Others including WADOH, Whatcom County PDS, and Whatcom County PW

Who is the Water Utility Coordinating Committee?



- Voting members are representatives from public water systems with 50 or more connections that choose to participate.
- Non-voting members can include:
 - Smaller public water systems
 - Whatcom County (HCS, PDS, PW)
 - Washington State Department of Health
 - Lummi Nation and Nooksack Tribe

What is the CWSP?



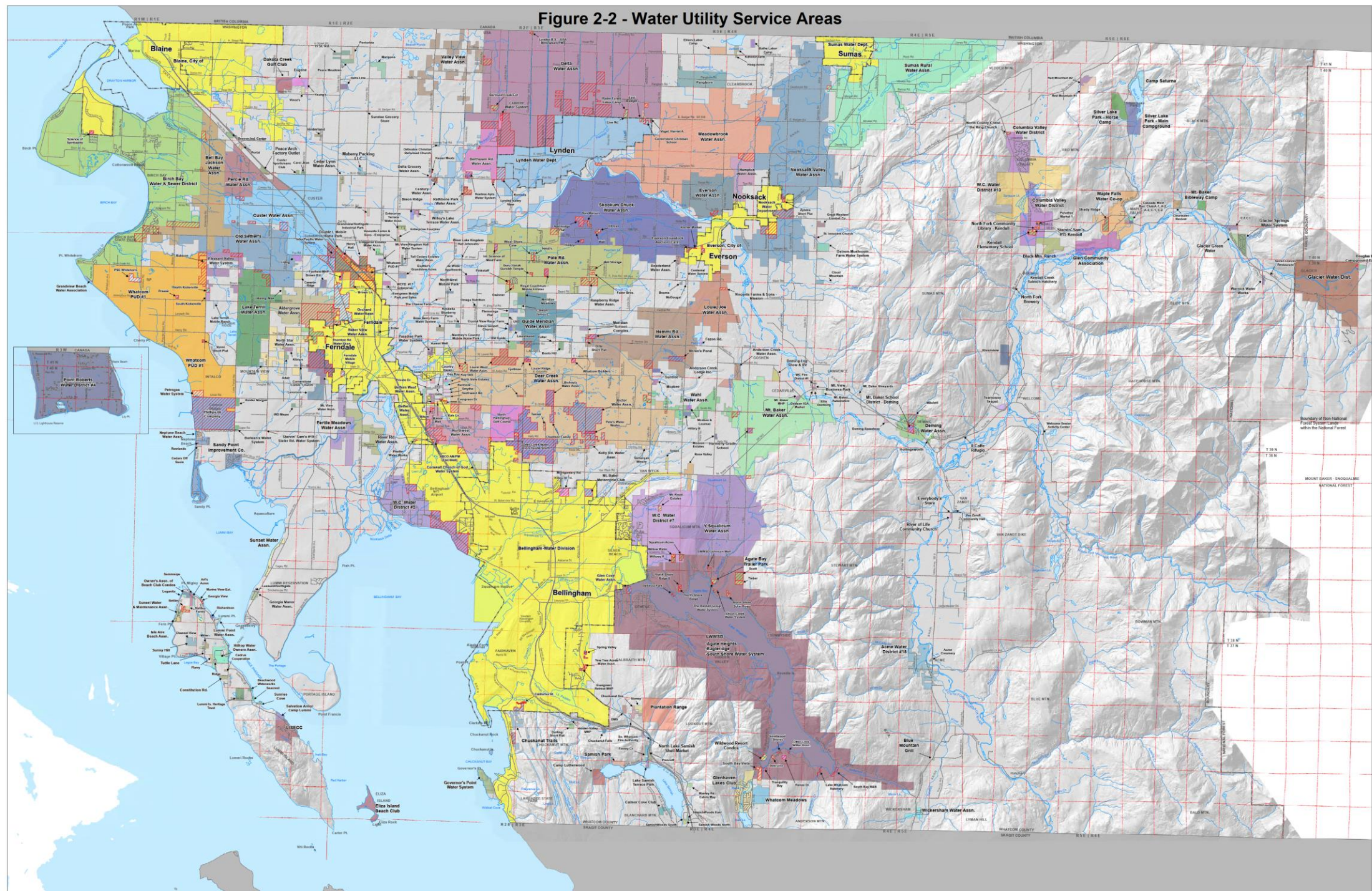
- Statutory requirement.
- Promote coordination between the larger public drinking water systems on a number of issues to facilitate the most efficient use of water for potable supply from those systems
- Track emerging issues.
- Inform the County on areas where public water supply is available, and not available, for its update of the Comprehensive Plan.



CWSP Sections

- Section 0 – Glossary of Acronyms and Terms
- Section ES – Executive Summary
- Section 1 – Introduction
- Section 2 – Coordinated Water System Plan Process
- **Section 3 – Population, Water Demand, and Existing Water Systems**
- Section 4 – Water Utility Service Areas
- Section 5 – Minimum Design Standards
- Section 6 – Utility Service Review Procedures
- Section 7 – Receivership of Failing Systems
- **Section 8 – Issues with Potential Implications for Public Water Systems in Whatcom County**
- Section 9 – Plan Implementation

Figure 2-2 - Water Utility Service Areas



Section 3 – Population, Water Demand, and Existing Water Systems



- Currently, there are 98 Group A, Community Public Water Systems in the Whatcom County Critical Water Supply Service Area (CWSSA).
- Only 55 systems (56%) are currently capable of serving additional future connections, based on 3 criteria.
 - Water Right Capacity - Ecology
 - Water System Operating Permit Color - DOH
 - Number of Available Connections - DOH

May 21, 2025

This map was prepared as part of the 2025 CWSP update and is anticipated to change in the future based upon updated information.

BRITISH COLUMBIA

NOTE: Lake Whatcom Water and Sewer District (LWWS) is composed of three subareas; Agate Heights, Eagleridge, and South Shore. The Agate Heights subarea can support 37 additional connections. The Eagleridge subarea can support 15 additional connections. The South Shore subarea can support an unspecified number of additional connections.

This map is a graphic representation derived from the Whatcom County Geographic Information System. It was designed and intended for Whatcom County staff use only; it is not guaranteed to survey accuracy. This map is based on the best information available on the date shown on this map.

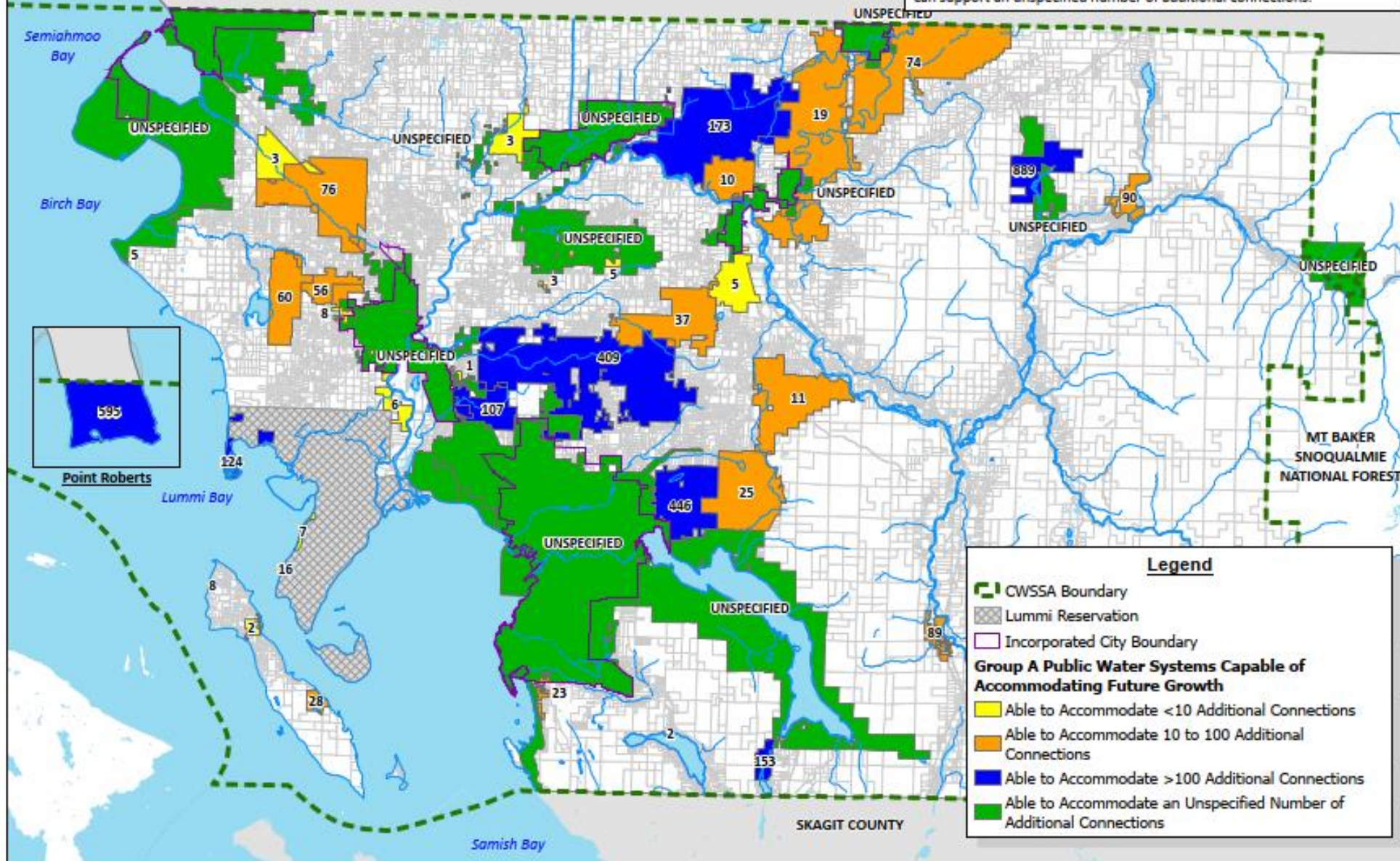
Any reproduction or sale of this map, or portions thereof, is prohibited without express written authorization by Whatcom County.

This material is owned and copyrighted by Whatcom County.

Vicinity Map



Figure 3-3
Number of Connections Available from Group A Water Systems
Whatcom County
Coordinated Water System Plan



Legend

- CWSSA Boundary
- Lummi Reservation
- Incorporated City Boundary
- Group A Public Water Systems Capable of Accommodating Future Growth**
- Able to Accommodate <10 Additional Connections
- Able to Accommodate 10 to 100 Additional Connections
- Able to Accommodate >100 Additional Connections
- Able to Accommodate an Unspecified Number of Additional Connections



1 inch = 8,000 Feet

DRAWING IS FULL SCALE WHEN BAR MEASURES 2"



Section 3 – Population, Water Demand, and Existing Water Systems



- For water systems that serve outside of the UGAs, it has been estimated that there are currently approximately 3,335 connections available, which is enough to house approximately 8,538 people.

May 21, 2025

This map was prepared as part of the 2025 CWSP update and is anticipated to change in the future based upon updated information.

BRITISH COLUMBIA

NOTE: Lake Whatcom Water and Sewer District (LWWSD) is composed of three subareas; Agate Heights, Eagleridge, and South Shore. The Agate Heights subarea can support 37 additional connections. The Eagleridge subarea can support 15 additional connections. The South Shore subarea can support 480 additional connections.

This map is a graphic representation derived from the Whatcom County Geographic Information System. It was designed and intended for Whatcom County staff use only; it is not guaranteed to survey accuracy. This map is based on the best information available on the date shown on this map.

Any reproduction or sale of this map, or portions thereof, is prohibited without express written authorization by Whatcom County.

This material is owned and copyrighted by Whatcom County.

Vicinity Map



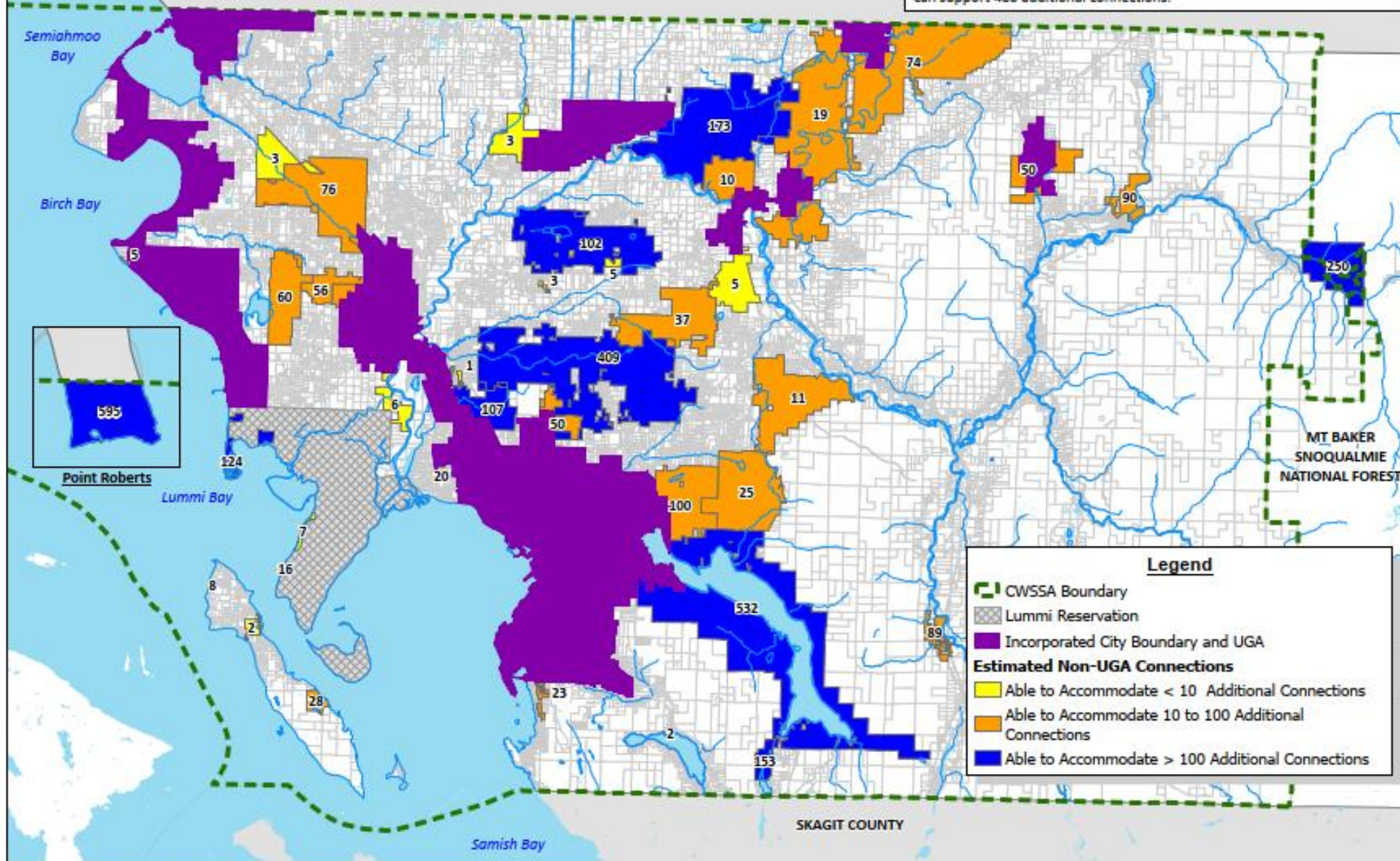
Figure 3-4 Estimated Connections Available from Group A Water Systems Outside of UGAs Whatcom County Coordinated Water System Plan



1 inch = 8,000 Feet

0 4,000 8,000 16,000 Feet

DRAWING IS FULL SCALE
WHEN BAR MEASURES 2"



Section 8 – Issues with Potential Implications for Public Water Systems in Whatcom County



- WRIA 1 Adjudication
 - Uncertainty on treatment of Municipal Water Rights
- Permit Exempt Wells
 - Increased uncertainty of this tool as a suitable source of rural water supply
- Water Quality Regulation Impacts (Financial and Operational Viability)
 - Nitrate and Arsenic maximum contaminant level (MCL)
 - Manganese Initiative (0.05 mg/L recommended guideline)
 - PFAS MCL – Emergent Contaminant

Path Forward



- The WUCC requests public and County Council comments by July 31st.
- Council holds Public Hearing to take comments (July 22nd).
- WUCC will review the comments received and determine if edits should be made.
- Council votes on whether to approve the CWSP Update (August/September).
- If approved, review by the Washington State Department of Health (60 days).
- Final CWSP approval before the end of 2025.

Soliciting Input



- Any questions/comments/input can be provided today.
- Or, the public comment period will run through the end of July with a Public Hearing by the County Council to be scheduled for July 22nd.
- Draft CWSP: <https://www.whatcomcounty.us/4662/Coordinated-Water-System-Plan>
- Comments can be provided via email: 2025UpdateCWSP@whatcomcounty.us



WHATCOM COUNTY
**HEALTH AND
COMMUNITY
SERVICES**

