



CITY OF EVERSON

Contact Information

Dan MacPhee
Police Chief
P.O. Box 315 Everson, WA 98247
(360) 966-4212

Approving Authority

Mayor John Perry & City Council Members
P.O. Box 315 Everson, WA 98247
(360) 966-3411

Planning Process

The City of Everson process of reviewing, updating, and adopting the 2021 update of the Whatcom County Natural Hazards Mitigation Plan (NHMP or Plan) included review by multiple City departments and formal adoption by the City Council. Review of the prior plan began in early 2021. The City Planner reviewed the previous plan and met with the Public Works Director and Chief of Police to identify portion of the plan that might need to be updated. From February through April of 2021 the City Planner attended a series of coordination meetings hosted by the County Division of Emergency Management (DEM). Initial guidance was received from DEM regarding the update schedule and the main areas to focus on as part of the update.

In early March 2021, the City provided public notice in the Lynden Tribune regarding the planned update of the NHMP and posted information regarding the update on the City website. Information regarding opportunities to provide public comment was also posted to the City website. During March and April of 2021, the City Planner prepared draft revisions to the NHMP and met with the Public Works Director and the Chief of Police to review the draft revisions and receive additional input. During the same time period, City staff participated in two virtual public meetings hosted by DEM where the public was invited to receive information and ask questions regarding the 2021 update of the NHMP.

The draft revisions to the NHMP addressing the city of Everson, incorporating input received from the Public Works Director, Mayor and Chief of Police, were submitted to DEM in late April 2021. In May of 2021, DEM notified the public regarding the availability of draft revisions to the full Plan and hosted a third virtual public meeting to receive comments from the public. Following review by the City Council in May 2021, the City Council passed a motion supporting the updates contained in the Everson section of draft NHMP. Prior to the Plan being submitted to the Federal Emergency Management Agency for review, the City Council expects to formally adopted the draft Plan in summer 2021. It is anticipated that formal adoption by ordinance will follow approval from FEMA.



Key Contributor List

- Rollin Harper, City Planner
- Dave Schoonover, Public Works Director
- Police Chief Dan MacPhee
- Mayor John Perry

Meeting Dates and Attendees

- February 23, 2021 – Harper, Schoonover and MacPhee
- April 15, 2021 – Harper, Schoonover and MacPhee
- April 30, 2021 – Harper and Schoonover

The information contained in the Natural Hazards Mitigation Plan update regarding hazards, risks, vulnerability, and potential mitigation is based on the best available science and technology currently available. This information and related data on natural hazards potentially impacting Everson will be used as a tool when the City updates other plans and programs, such as the following:

- Comprehensive plan required by the Growth Management Act (GMA);
- Development regulations required by the GMA;
 - Critical areas ordinance;
 - Capital improvement program;
 - Capital facilities planning; and
 - Water Resource Inventory Area planning.

As additional information becomes available from other planning sources that can enhance this Plan, that information will be incorporated through the periodic update process.

Plan Maintenance for the City of Everson

The City of Everson will maintain and update the Natural Hazards Mitigation Plan as needed to respond to changed circumstances, to incorporate best available science and to address changing community priorities. The Plan update process will include community engagement through public meetings and opportunities for public comment. Formal updates of the Plan will be reviewed by the City Council prior to adoption.



Public Outreach and Education

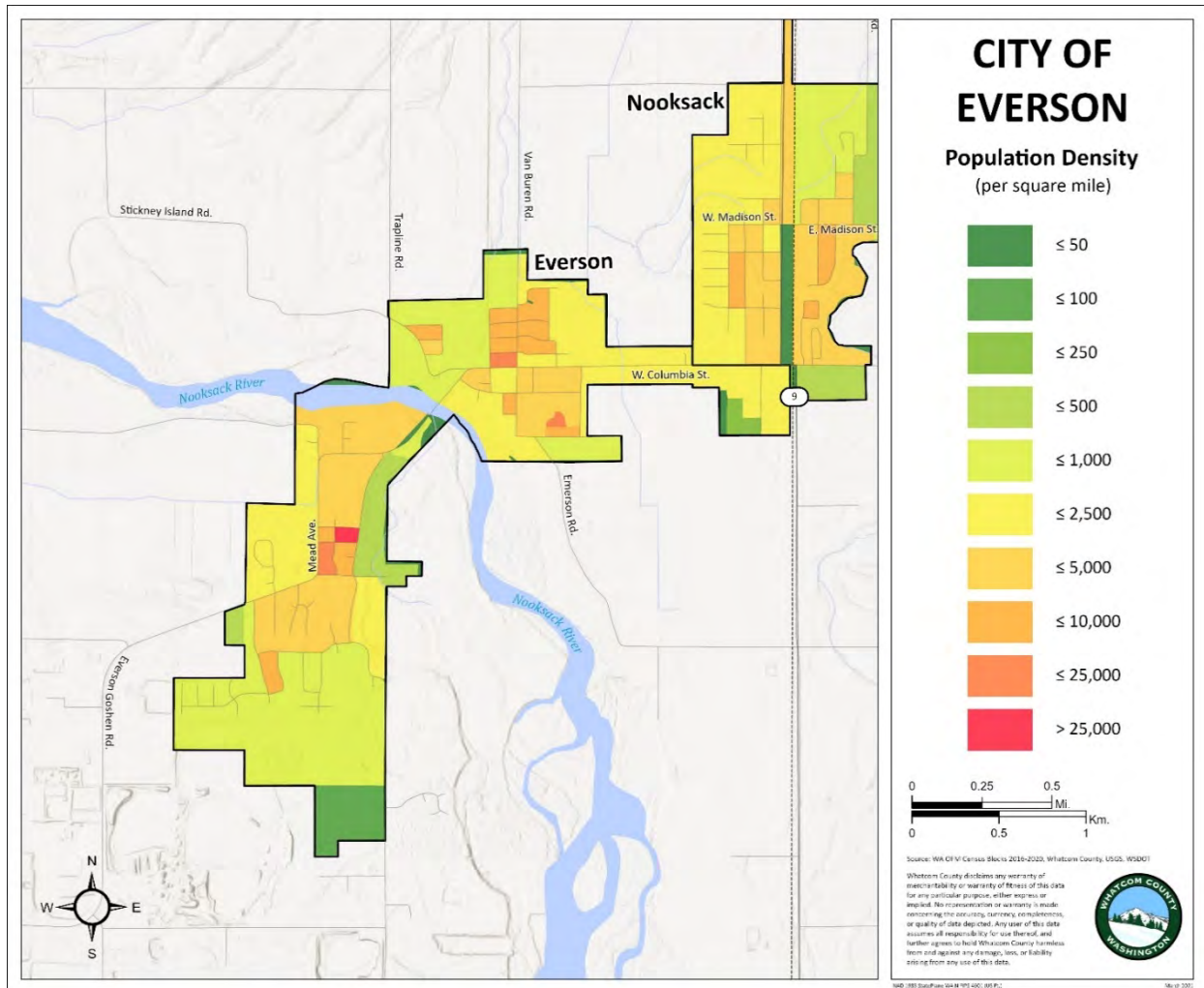
Program	Yes/No, Year Adopted	Description
Nonprofit organizations or local residents groups focused on hazard mitigation, emergency preparedness, vulnerable populations, etc.	No	
Ongoing public education or information programs	Yes 2008-CRS mailings 2010-Newsletters 2018-City website postings	Repetitive loss information Floodplain preparedness and water conservation information
School-related programs for natural hazard safety	Yes 2005	Semi-annual in-school drills regarding responses to natural disasters
Public education or information program	Yes 2008-CRS mailings 2010-Newsletters 2018-City website postings	Repetitive loss information Floodplain preparedness and water conservation information
StormReady certification	No	Whatcom County is StormReady certified.
Firewise Community certification	No	N/A
Public-Private Partnership initiatives addressing disaster-related issues	No	
Other		

Overview of Everson, Hazards, and Assets



Geography of Everson

Everson Population	2,860 (2020 estimate)
Total area	1.36 sq. mi. (within city limits)

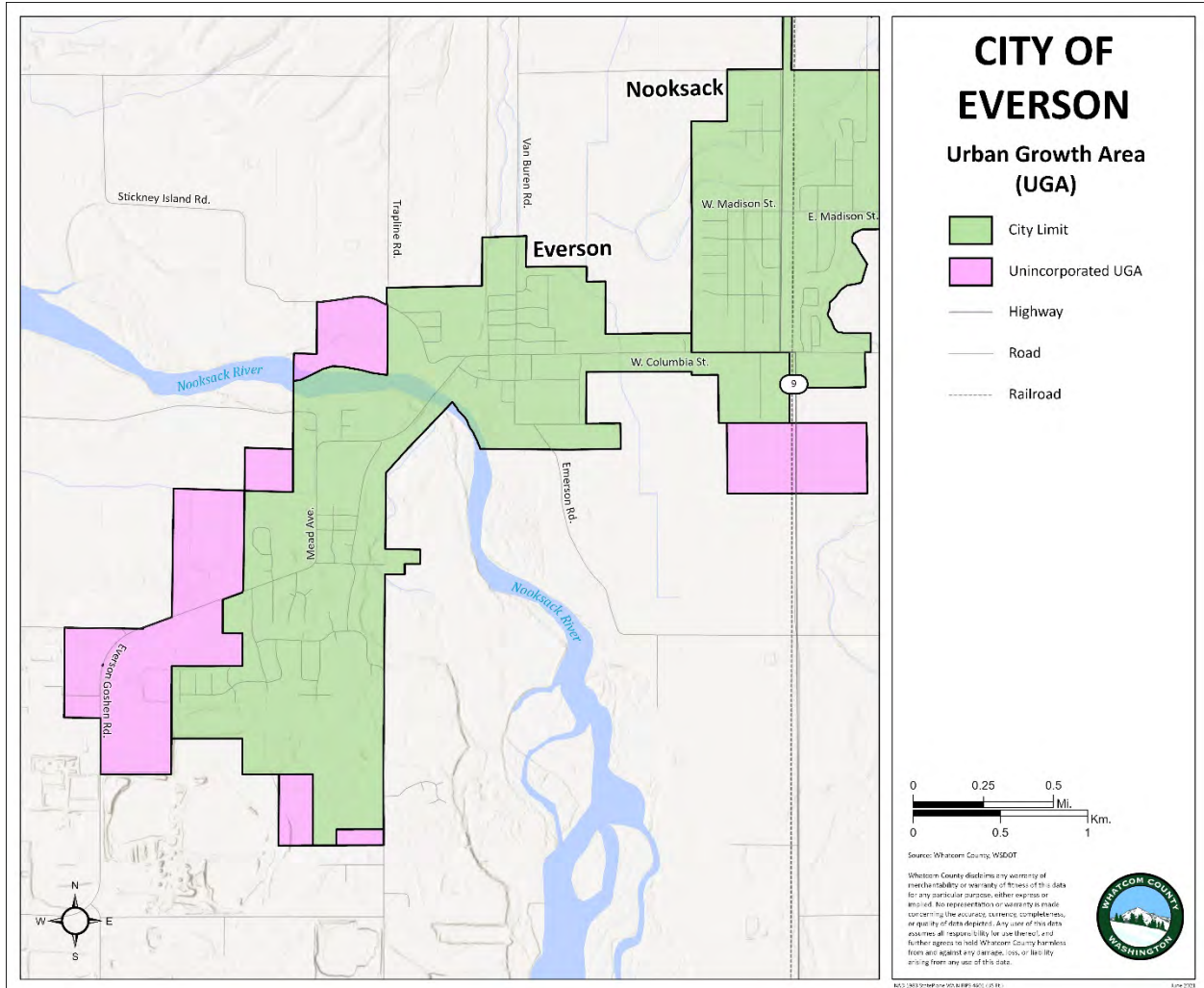


Washington State Office of Financial Management (OFM) 2020 population and housing estimates for 2010-2020 census block data. This map uses the 2016-2020 average population to show population density per square mile.



Growth Trends

This map displays the UGA for the City of Everson, as designated by the Whatcom County Comprehensive Plan.





Presence of Hazards and their Impacts in Everson

Flooding from the Nooksack River is the most significant hazard that affects the City of Everson, with moderate to major events occurring every five to ten years. The most recent event occurred in February 2020 when the Nooksack River overflowed its banks to the south of Everson and flowed away from the river and into the “Nooksack Overflow Corridor,” which carries floodwaters to the north, through rural Whatcom County, the City of Sumas and into Canada. The flowing of floodwaters through the Overflow Corridor resulted in closure of E. Main Street (State Route 9), which is the main connecting route between the cities of Everson and neighboring Nooksack. This closure temporarily interrupted access police, fire and other emergency services to the eastern portions of Everson and the City of Nooksack that are located on the east side of the Overflow Corridor.

Since the 2016 NHMP was adopted, the City of Everson has grown by roughly 260 people. Nearly all of this growth occurred in the southern half of Everson, south of the Nooksack River and outside the 100-year floodplain. The Everson City Council has adopted increased densities in select non-floodplain areas, and the City is in the process of annexing an over 100-acre area that is entirely outside the floodplain. The local fire district is currently planning to relocate its Everson fire station from its current downtown location within the floodplain to a new location within the pending annexation area. In addition, over the past several years the City has completed projects to elevate critical facilities one to three feet above the elevation of the floodplain.

In the table below is a list of the major hazards that effect Whatcom County. The second column provides the percentage of Everson’s total area that is exposed to each hazard. The third column indicates the severity of anticipated impacts to community function, considering the credible worst-case hazard scenario. Severity of anticipated impacts considers effects on basic community function such as shelter, transportation, utilities, commerce, industry, agriculture, education, health, recreation, and cultural identity. Severity ranges from none to extreme, as shown in the key below the table. Finally, the last column of the table describes where the hazard impacts the community and which services the hazard would most significantly impact.



	Hazard	% area Exposed	Severity of Anticipated Impacts	Hazard Descriptions
Geological	Earthquake	100%	Moderate	The City of Everson is subject to earthquakes. Seismically sensitive soils present.
	Liquefaction	95.8%	Low	Part of the city, east of Strandel Road, has known clay soil called phixatropic. Phixatropic liquefies when moved, causing landslides and flow.
	Landslide	0%	None	N/A
	Volcano	53.7%	Low	All of the downtown area, adjacent to the Nooksack River, and north and east to the City Limits are vulnerable to a Mount Baker lahar.
	Tsunami	0%	None	N/A
	Mine Hazards	0%	None	N/A
Hydro-logical	Flooding	42.1%	High	Hazard presents a frequent and severe risk due to isolated areas. Major flooding occurred in 1989, 1990, and 1995. Flooding begins on the west side of the City and moves east and north up Highway 9 toward Sumas. A 1991 dike was extended with money from mitigation. A dike runs parallel to the river on the west side, and ends on Emerson Road, which prevents water from going to Washington Street and on through to Main Street. This dike diverts Nooksack River overflow to the floodway. The Sumas River can flood east of the city, but does not cause severe problems.

Exhibit A



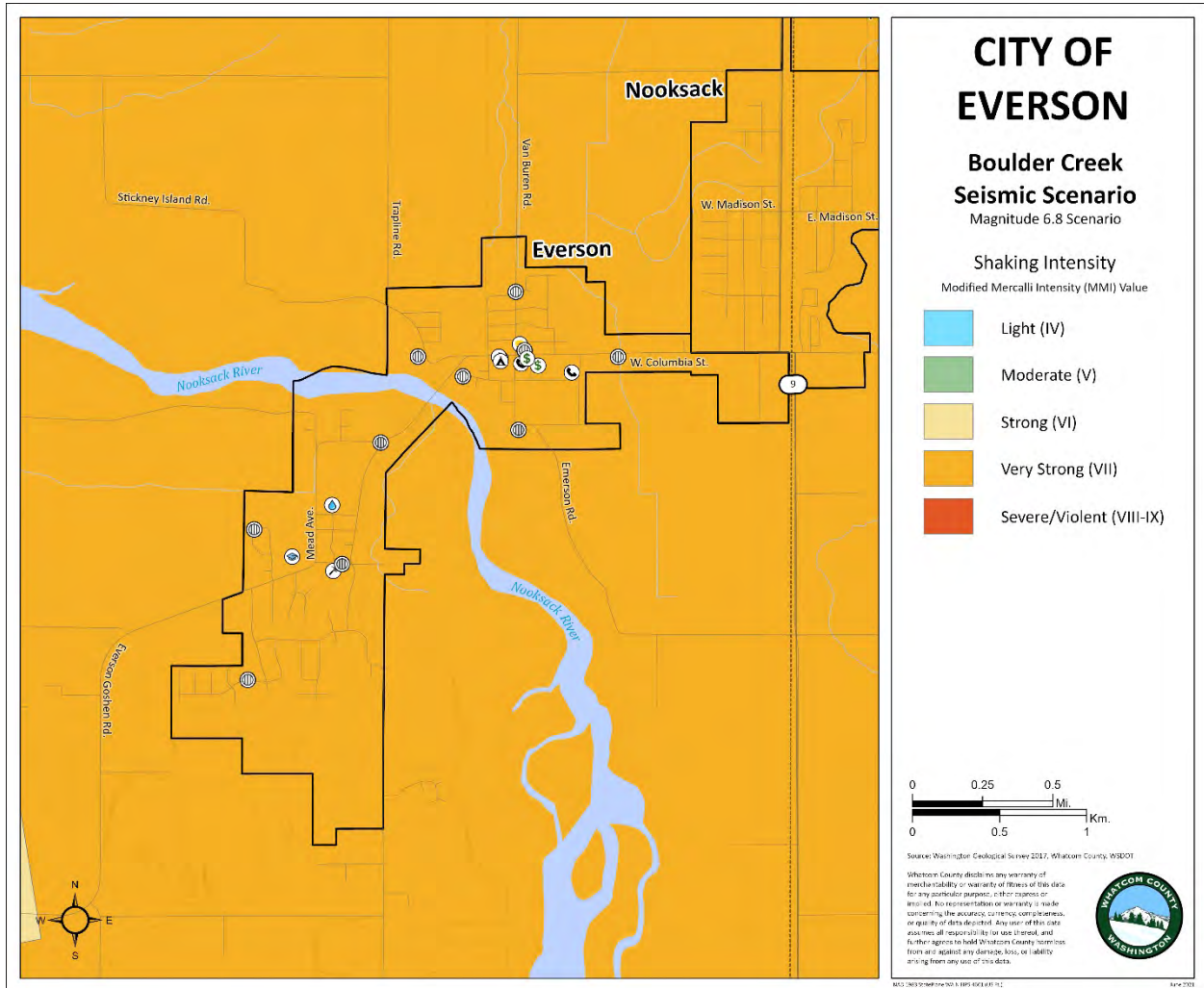
Meteorologica —	Wildfire	22.7%	Low	Various residential homes at risk. The city has multiple 1970s apartments and duplexes and two senior living facilities. Two mobile home parks are present with a total of 71 units.
---------------------------	-----------------	-------	-----	--

Severity Scale: **None** = no impact to community function
Low = minor degradation of community functions, not widespread
Moderate = moderate degradation over multiple weeks or widespread
High = degradation or loss over many weeks, widespread

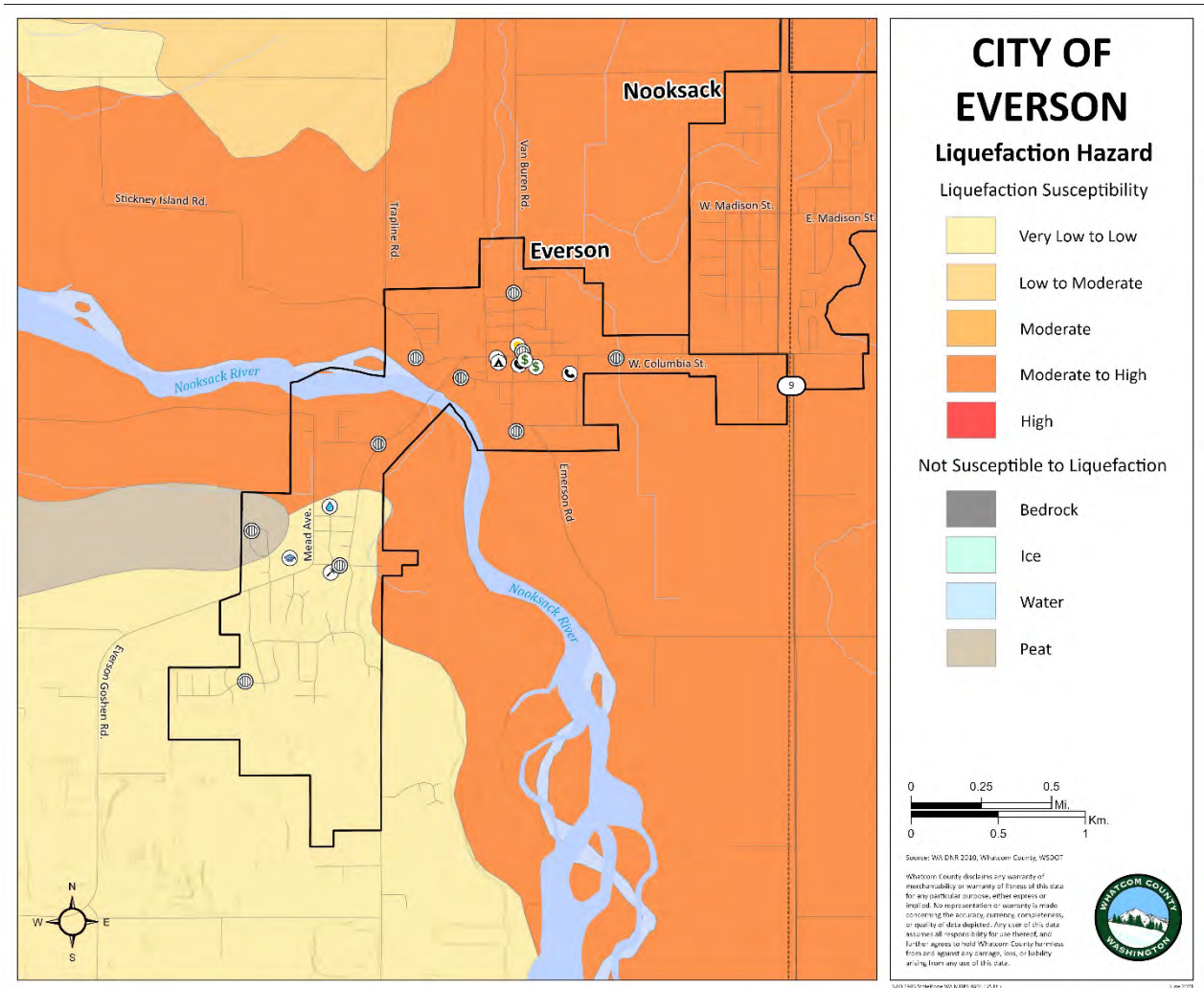


Natural Hazard Maps

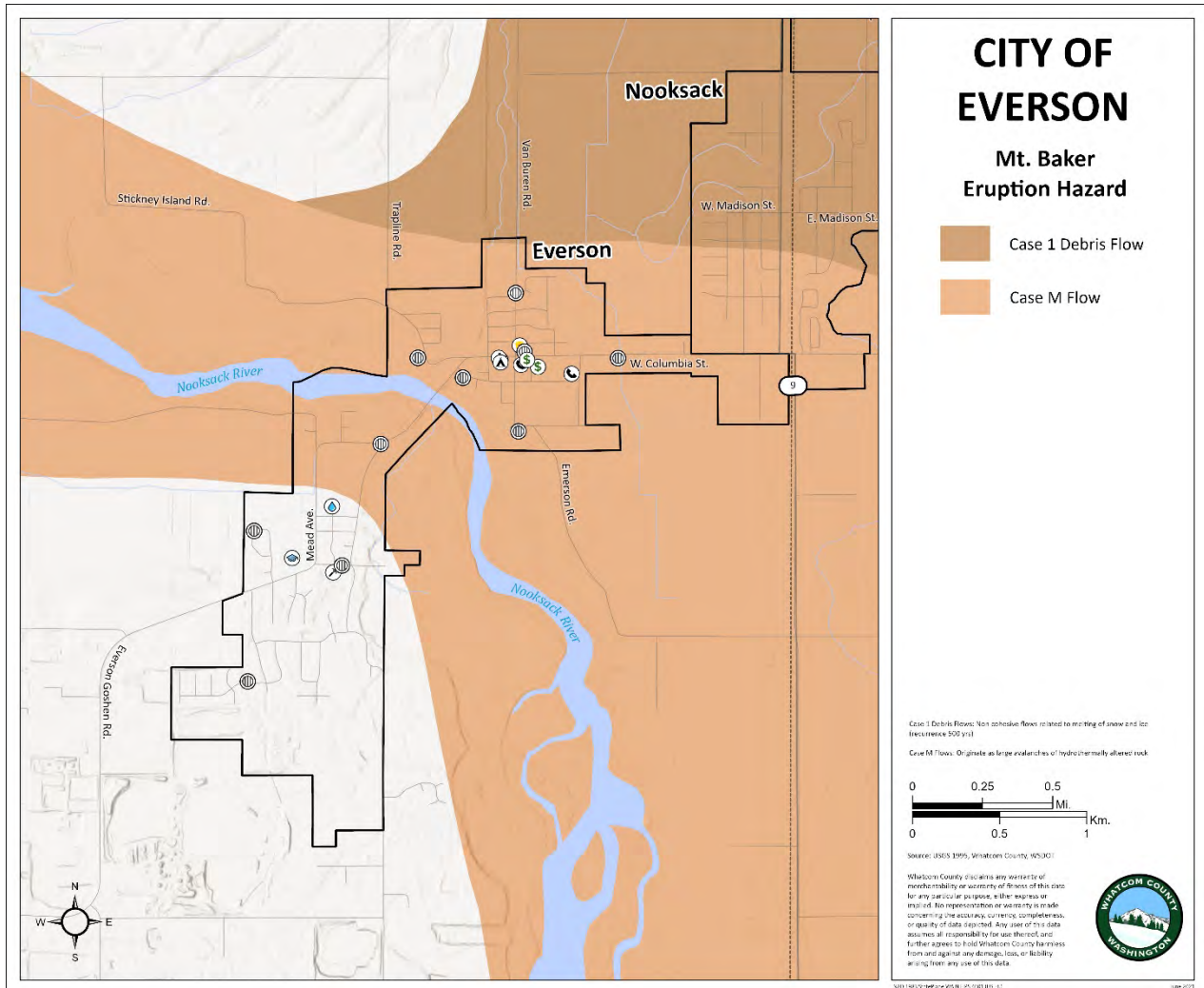
The following figures depict the natural hazards present within the jurisdiction.



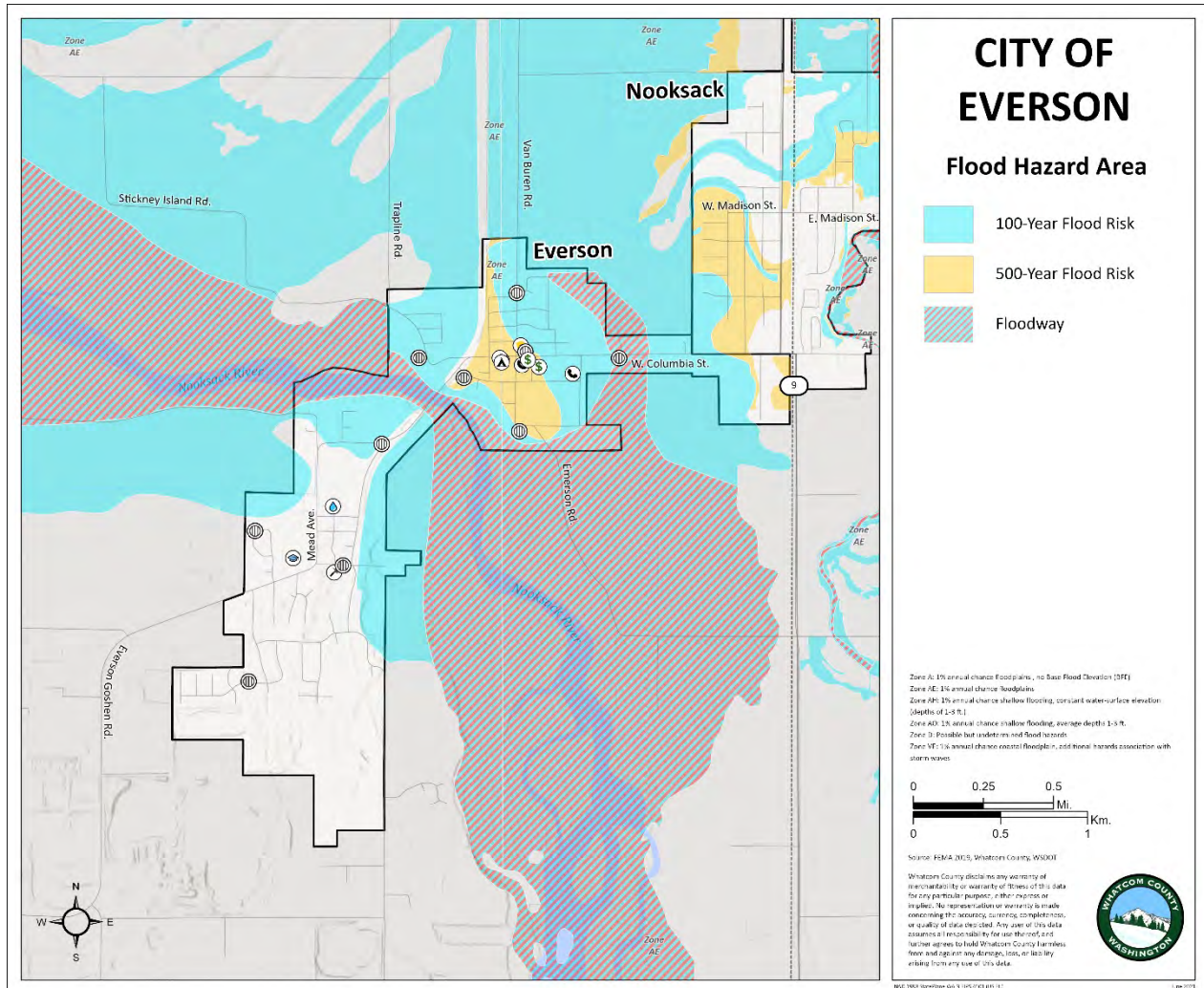
Washington Department of Natural Resources (WA DNR) 2017 Boulder Creek Fault Zone seismic scenario of magnitude 6.8 data. Displays extent and severity of the modeled earthquake in the Modified Mercalli Intensity (MMI) scale.



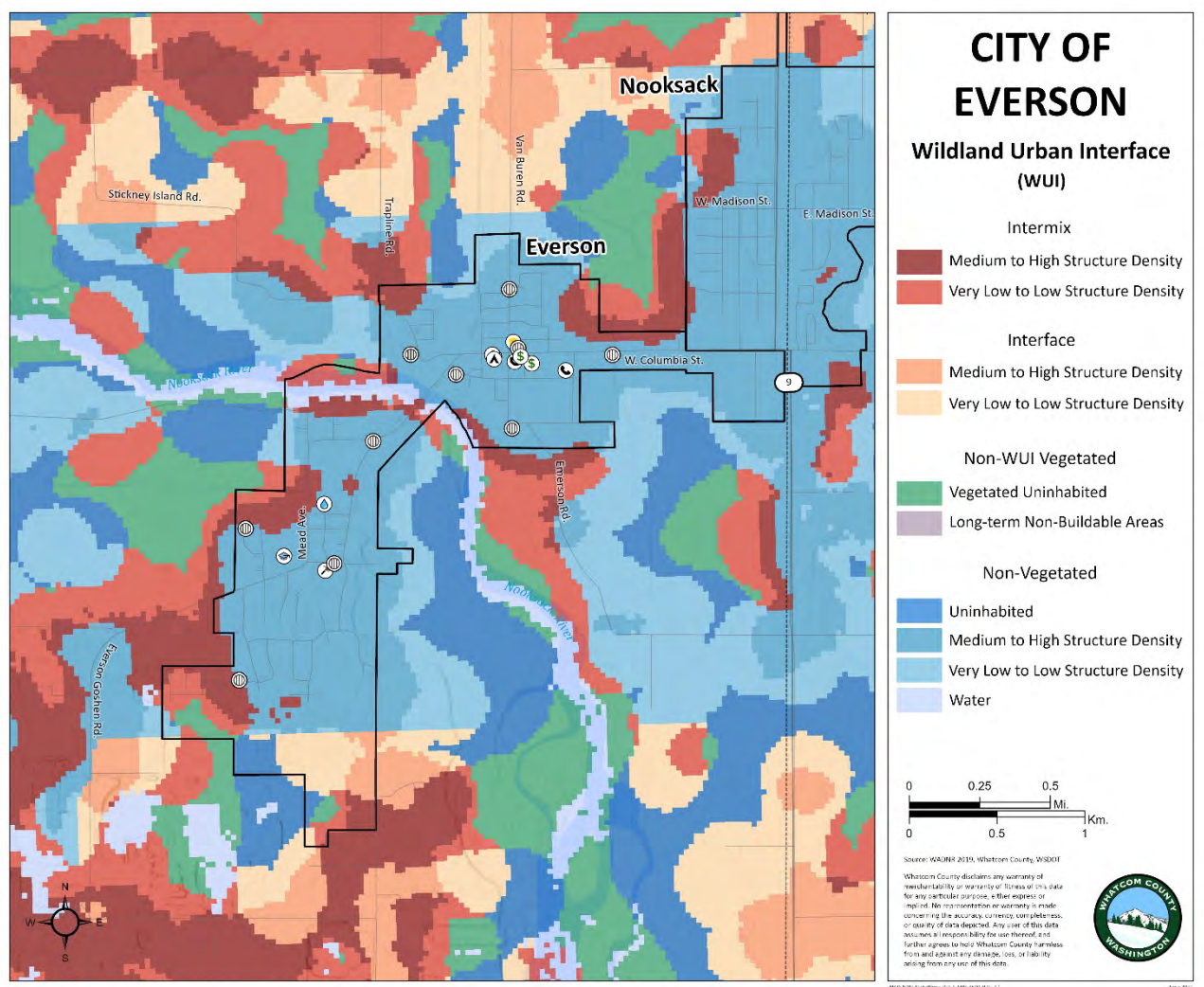
Washington Department of Natural Resources (WA DNR) 2010 liquefaction susceptibility data. This feature class is part of a geodatabase that contains statewide ground response data for Washington State.



USGS Hazards from Future Activity of Mount Baker, WA (1995) data shows different volcanic flows. Case M flows originate as large avalanches of hydrothermally altered rock. Case 1 debris flows are non-cohesive flows related to melting of snow and ice, with a recurrence of 500 years. Case 2 debris flows are cohesive flows from small debris avalanches, with a recurrence of 100 years.



FEMA 2019 flood hazard data showing 100-year flooding, 500-year flooding, floodways, and flood zones. FEMA flood data includes both riverine and coastal flooding.



Washington Department of Natural Resources (WA DNR) 2019 mapped data of Washington's Wildland Urban Interface (WUI). The WUI displays areas of WA where structures and wildland overlap with specific structure densities



Everson Critical Facility List

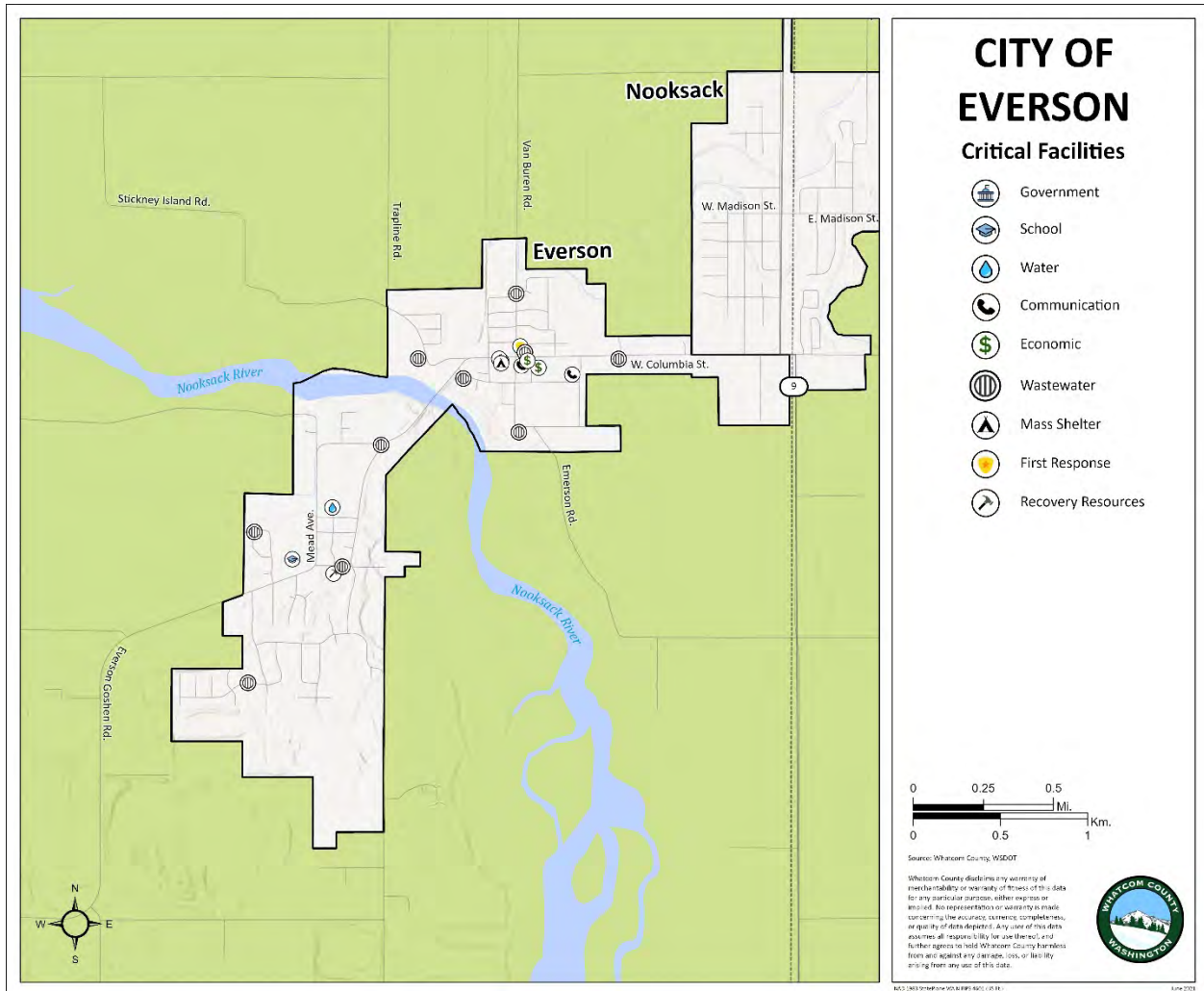
Facility Name	Facility Type	Significance	Location	Assessed Dollar Value	Notes
Elementary School - Dist. 506	EF	2	216 Everson-Goshen Road		Evacuation Center
Everson City Hall	EF	3	111 W. Main Street		Government
Everson Police Dept.	EF	3	109 W. Main Street		Law Enforcement
Everson Community Center	EF	1	111 W. Main Street		Evacuation Center
Everson Water Production Facility	LUS	3	610 Freda Street		Utility: Water
People's Bank	EF	1	200 E. Main Street		Economic
Post Office	EF	2	108 Blair Drive		Mail
Public Works Strandell Shop	EF	1	603 Robinson Street		Public Works
Pump Station #11	LUS	2	716 Red Maple Loop		Utility: Sewer
Pump-Station - Evergreen	LUS	2	116 Evergreen Way		Utility: Sewer
Pump-Station #10	LUS	2	605 Robinson Street		Utility: Sewer
Pump-Station #4 (Interceptor)	LUS	3	506 E. Main Street		Utility: Sewer
Pump-Station #5	LUS	2	103 E. Main Street		Utility: Sewer
Pump-Station #6	LUS	2	208 Everson Road		Utility: Sewer
Pump-Station #7	LUS	2	401 Lincoln Street		Utility: Sewer
Pump-Station #8	LUS	2	102 Reeds Lane		Utility: Sewer
Pump-Station #13	LUS	2	1117 Cashmere Lane		Utility: Sewer
Verizon Communications	LUS	1	107 S. Washington Street		Utility: Communication
Waste Water Treatment Plant	HMF	3	101 Park Drive		Utility: Sewer
Whatcom County Fire District 1	EF	3	101 E. Main Street		Fire Station



Whatcom Educational Credit Union	EF	1	106 E. Main Street		Economic
--	----	---	--------------------	--	----------

Facility Type: EF = Essential Facility; HMF = Hazardous Materials Facility; HPL = High Potential Loss; LUS = Lifeline Utility System

Significance to community function: 1=Moderate; 2= High; 3 =Very High



Map of critical facilities identified by the City of Everson. Across Whatcom County, critical facilities fell into 15 categories. Unique categories developed for this plan update include mass shelter, assisted living, and recovery resources. Mass shelter includes facilities such as fairgrounds and community centers. Recovery resources are facilities that are required post-hazard event, for example public works and private construction companies. Not all jurisdictions identified or included critical facilities in each category.



Critical Facility Rankings for the City of Everson

The table below indicates whether each critical facility falls within known hazard zones for earthquake, liquefaction, landslide, tsunami, volcano, riverine flooding, coastal flooding and wildfire zones. A rank assessment in the last column indicates how the relative risk of community impact. This ranking considers the significance of the facility to the community and the number of hazard zones the facility is within. The frequency of each hazard is also considered, such that being in a low frequency hazard zone would receive a lower ranking than that same facility being in a high frequency hazard zone. Ranking is on a scale of 1 to 10, with 1 being the facility with the highest-ranking score, and 10 being a facility with the lowest ranking score in the jurisdiction.

$$\text{Rank} = \text{Significance} * \left[\frac{\text{EQ_Zone}}{\text{EQ_Freq}} + \frac{\text{LQ_Zone}}{\text{LQ_Freq}} + \frac{\text{LS_Zone}}{\text{LS_Freq}} + \dots + \frac{\text{WF_Zone}}{\text{WF_Freq}} \right]$$

Ranking value will be from 0.0 to 1.0, scaled to the highest ranking in jurisdiction.

Significance: 1=moderate; 2=high; 3=very high, as assessed in the critical facilities list in the previous section

Zone: 0=facility not in hazard zone; 1 = facility in the hazard zone

Frequency (e.g. EQ_Freq, LQ_Freq) is the most difficult variable to which to assign a value. Frequency varies based upon the magnitude of a hazard event and varies from one place to another. It was not possible within the time constraints to assess frequency of hazard at each critical facility location. Instead, a qualitative assessment of the hazard frequency across the entire county was made, as shown in the chart below.

Description	Freq Value used in formula	Hazards
Frequent, occurring on the order of decades	3	Riverine flooding (FL); Coastal flooding (COA)
Rare, occurring on the order of centuries	2	Earthquake (EQ); Liquefaction (LQ); Landslide (LS); Wildfire (WF)
Very rare, occurring on the order of millennia	1	Tsunami (TSU); Volcano (VOL)

Note: Severe storm, a very frequent hazard, was omitted because it is ubiquitous and because no hazard map of storm severity was available.



Critical Facilities Ranking Table

Facility Name	Facility Type	Significance	EQ	LQ	LS	TSU	VOL	FL	COA	WF	Rank Assessment
Elementary School - Dist. 506	EF	2	1	1	0	0	0	0	0	0	0.29
Everson City Hall	EF	3	1	1	0	0	1	1	0	0	1
Everson Police Dept.	EF	3	1	1	0	0	1	1	0	0	1
Everson Community Center	EF	1	1	1	0	0	1	1	0	0	0.33
Everson Water Production Facility	LUS	3	1	1	0	0	0	0	0	0	0.43
People's Bank	EF	1	1	1	0	0	1	1	0	0	0.33
Post Office	EF	2	1	1	0	0	1	1	0	0	0.66
Public Works Strandell Shop	EF	1	1	1	0	0	0	0	0	0	0.14
Pump Station #11	LUS	2	1	0	0	0	0	0	0	0	0.14
Pump-Station - Evergreen	LUS	2	1	1	0	0	1	1	0	0	0.66
Pump-Station #10	LUS	2	1	1	0	0	0	0	0	0	0.29
Pump-Station #4 (Interceptor)	LUS	3	1	1	0	0	1	1	0	0	1
Pump-Station #5	LUS	2	1	1	0	0	1	1	0	0	0.66
Pump-Station #6	LUS	2	1	1	0	0	1	1	0	0	0.66

Exhibit A



Pump-Station #7	LUS	2	1	1	0	0	1	1	0	0	0.66
Pump-Station #8	LUS	2	1	1	0	0	1	1	0	0	0.66
Pump-Station #13	LUS	2	1	1	0	0	0	0	0	0	0.29
Verizon Communications	LUS	1	1	1	0	0	1	1	0	0	0.33
Waste Water Treatment Plant	HMF	3	1	1	0	0	1	1	0	0	1
Whatcom County Fire District 1	EF	3	1	1	0	0	1	1	0	0	1
Whatcom Educational Credit Union	EF	1	1	1	0	0	1	1	0	0	0.33

Notes: **EQ** = Earthquake; **LQ** =Liquefaction; **LS** = Landslide; **TSUN** = T0sunami; **VOL** = Volcano; **FL** = Riverine Flooding; **COA** = Coastal Flooding; **WF** = Wildland Fire



Areas and Assets Exposed, Per Hazard

City of Everson Exposure to Natural Hazards						
Hazard Susceptibility	Asset County (% of Total)				Critical Facilities Appraised Value (Million)	
	Area (sq.mi.)	Population	Parcels	Critical Facilities		
Earthquake, Shaking Intensity						
<i>MMI V</i>	-	-	-	-	-	
<i>MMI VI</i>	-	-	0.1%	-	-	
<i>MMI VII</i>	100%	100%	99.8%	100%	\$12	
<i>MMI VIII - IX</i>	-	-	-	-	-	
TOTAL	100%	100%	99.9%	100%	\$12	
Liquefaction						
<i>Very Low to Low</i>	42.9%	38.6%	44.4%	23.8%	\$6	
<i>Low to Moderate</i>	-	-	-	-	-	
<i>Moderate</i>	-	-	-	-	-	
<i>Moderate to High</i>	52.9%	59.5%	50.9%	71.4%	\$6	
<i>High</i>	-	-	-	-	-	
TOTAL	95.8%	98.1%	95.3%	95.2%	\$12	
Landslide						
<i>Landslide Low</i>	-	-	-	-	-	
<i>Landslide Moderate</i>	-	-	-	-	-	



Hydrologica I Hazards	<i>Landslide High</i>	-	-	-	-	-	
	<i>Fan Low</i>	-	-	-	-	-	
	<i>Fan Moderate</i>	-	-	-	-	-	
	<i>Fan High</i>	-	-	-	-	-	
	<i>Mine Hazard</i>	-	-	-	-	-	
	TOTAL	-	-	-	-	-	
	Volcanic Eruption						
	<i>Case 1 Debris Flows</i>	0.2%	0.01%	-	-	-	
	<i>Case 2 Debris Flows</i>	-	-	-	-	-	
	<i>Case M Flows</i>	53.5%	58.9%	49.8%	71.4%	\$6	
	<i>Pyroclastic Flows, Lava Flows, and Ballistic Debris</i>	-	-	-	-	-	
	TOTAL	53.7%	58.91%	49.8%	71.4%	\$6	
	Tsunami, Inundation Zone						
	<i>Low to Moderate Inundation Potential</i>	-	-	-	-	-	
	<i>Moderate to High Inundation Potential</i>	-	-	-	-	-	
	<i>High Inundation Potential</i>	-	-	-	-	-	
	TOTAL	-	-	-	-	-	
	Flooding						
	<i>100-year Flood</i>	33.9%	35.9%	33.9%	9.5%	\$3	
	<i>500-year Flood</i>	7.5%	14.1%	13.2%	38.1%	\$3	

Exhibit A



	<i>Floodway</i>	0.7%	6.3%	2.2%	4.8%	-
	<i>Undetermined (Zone D)</i>	-	-	-	-	-
	TOTAL	42.1	56.3%	49.3%	52.4%	\$6
Meteorological Hazards	Wildfire Zones					
	<i>Interface Very Low-Low Structure Density</i>	3.9%	1.6%	1%	-	-
	<i>Interface Medium-High Structure Density</i>	1.4%	0.5%	0.5%	-	-
	<i>Intermix Very Low-Low Structure Density</i>	5.5%	2.3%	3.9%	-	-
	<i>Intermix Medium-High Structure Density</i>	11.9%	9%	10.2%	-	-
	TOTAL	22.7	13.4%	15.6%	-	-



Status of Everson’s 2016-2020 and Ongoing Hazard Mitigation Actions

This section describes the status of mitigation actions that were proposed in the 2016 Mitigation Plan and are now 1) currently being implemented and are ongoing, 2) are now completed, or 3) are now discontinued because they are no longer needed. The actions are organized by hazard and indicate the lead agency, funding source, and status.

Lead Agency	May be more than one lead agency indicating shared responsibility and coordination
Funding Source	Local; State; FEMA; Private; Other
Current Status	Action Discontinued / Action Completed / Action ongoing and expected completion date

General: All Hazards

G-a. Adopt and enforce building codes. This applies to earthquakes, flooding, winter storms/freezes, and severe winds. The City Planning, Building and Public Works Departments continue to adopt and enforce building codes and development regulations that address natural hazards mitigation.

Lead Agency	Everson Planning, Building and Public Works Department
Funding Source	Local
Current Status	Ongoing

Drought/heat wave

D-a. Assess Vulnerability to Drought Risk. The City Planning Department continues to assess risks related to drought, including as part of the 2016 update to the City’s critical areas ordinance.

Lead Agency	City Planning Dept.
Funding Source	Local
Current Status	Ongoing

D-b. Monitor Drought Conditions. The City Public Works Department continues to monitor



drought conditions on annual basis and implements water-related mitigation strategies as appropriate.

Lead Agency	City Public Works Dept.
Funding Source	Local
Current Status	Ongoing

D-c. Monitor Water Supply. The City Public Works Department continues to monitor the public water supply and implement water conservation strategies as appropriate.

Lead Agency	City Public Works Dept.
Funding Source	Local
Current Status	Ongoing

D-d. Plan for Drought. The City Planning Department continues to plan for droughts, including as part of the 2016 update of the city comprehensive land use plan.

Lead Agency	City Planning Dept.
Funding Source	Local
Current Status	Ongoing

D-e. Require Water Conservation During Drought Conditions. The City Public Works Department continues to monitor drought conditions and implement water conservation measures as appropriate.

Lead Agency	City Public Works Dept.
Funding Source	Local
Current Status	Ongoing

D-f. Educate Residents on Water Saving Techniques. The City Administration continues to support education of residents regarding water conservation efforts, including through information provided with quarterly newsletters.

Lead Agency	City Administration
Funding Source	Local
Current Status	Ongoing

Earthquake

EQ-a. Incorporate Earthquake Mitigation into Local Planning. The City Planning Department continues to incorporate planning related to earthquakes, including as part of the 2016 update



to the city comprehensive plan.

Lead Agency	City Planning Dept.
Funding Source	Local
Current Status	Ongoing

EQ-b. Map and Assess Community Vulnerability to Seismic Hazards. The City Planning Department continues to map and assess vulnerability to seismic hazards, including as part of the 2016 update of the city critical areas ordinance.

Lead Agency	City Planning Dept.
Funding Source	Local
Current Status	Ongoing

EQ-c. Conduct Inspections of Building Safety. The City Building Department continues to conduct inspections related to building safety as required by City building codes.

Lead Agency	City Building Dept.
Funding Source	Local
Current Status	Ongoing

EQ-d. Protect Critical Facilities and Infrastructure. The City Building and Public Works Departments continue to protect critical facilities and infrastructure, including elevating wastewater treatment plant control systems, operational buildings and back-up power generation systems three feet above the FEMA base flood elevation.

Lead Agency	City Building and Public Works Depts.
Funding Source	Local
Current Status	Ongoing

Extreme Temp

No actions ongoing, discontinued, or completed for this hazard.

Flooding

FL-a. Incorporate Flood Mitigation in Local Planning. The City Planning Department continues to incorporate flood mitigation into local planning, including as part of the 2016 update of the city critical areas ordinance, the 2019 adoption of new FEMA flood insurance rate maps, and updates to the County comprehensive flood hazard management plan currently underway.



Lead Agency	City Planning Dept.
Funding Source	Local
Current Status	Ongoing

FL-b. Form Partnerships to Support Floodplain Management. The City Planning and Public Works Departments continue to work to form partnerships that support floodplain management, including working closely with County long-range and current planning divisions and the County Public Works River and Flood Division.

Lead Agency	City Planning and Public Works Depts.
Funding Source	Local
Current Status	Ongoing

FL-c. Limit or Restrict Development in Floodplain Areas. The City Planning, Building and Public Works Departments continue to limit development in floodplain areas through amendment and enforcement of City critical areas ordinance regulations, flood damage prevention regulations, and city building codes.

Lead Agency	City Planning, Building and Public Works Depts.
Funding Source	Local
Current Status	Ongoing

FL-d. Improve Stormwater Management Planning. The City Planning Department continues to improve planning, regulation and enforcement related to stormwater management, including through 2016 updates to the City comprehensive plan and the 2016 adoption of the state stormwater management manual for Western Washington.

Lead Agency	City Planning Dept.
Funding Source	Local
Current Status	Ongoing

FL-e. Improve Flood Risk Assessment. The City Public Works Department continues to assess risks related to flooding, including through participation in the federal CRS Program and RISK Map assessment efforts.

Lead Agency	City Public Works Dept.
Funding Source	Local
Current Status	Ongoing



FL-f. Join or Improve Compliance with NFIP. The City continues to participate in the National Flood Insurance Program (NFIP). The City Planning, Building and Public Works Departments continue to work to improve compliance with the NFIP, including through adoption of 2019 amendments to the City’s flood damage prevention ordinance that included updated flood insurance rate maps.

Lead Agency	City Planning, Building and Public Works Depts.
Funding Source	Local
Current Status	Ongoing

FL-g. Manage the Floodplain Beyond Minimum Requirements. The City Planning and Building Departments continue to manage floodplains beyond minimum requirements, including through amendment of critical areas and floodplain management regulations that require extra elevation of critical facilities and prohibit the placement of fill within floodplains except under certain conditions.

Lead Agency	City Planning and Building Depts.
Funding Source	Local
Current Status	Ongoing

FL-h. Establish Local Funding Mechanisms for Flood Mitigation. The County Flood Control Zone District continues to make locally generated district funds available for local projects, including the purchase of open space areas located in designated floodways within Everson.

Lead Agency	County Flood Control Zone District
Funding Source	County
Current Status	Ongoing

FL-i. Improve Stormwater Drainage System Capacity. The City Public Works Department continues to work to improve stormwater drainage system capacity through annual system upgrades and maintenance projects.

Lead Agency	City Public Works Dept.
Funding Source	Local
Current Status	Ongoing

FL-j. Conduct Regular Maintenance for Drainage Systems and Flood Control Structures. The City Public Works Department continues to work to improve stormwater drainage system



capacity through annual maintenance projects, such as inspection and clearing of stormwater conveyance systems.

Lead Agency	City Public Works Dept.
Funding Source	Local
Current Status	Ongoing

FL-k. Preserve Floodplains as Open Space. The City Planning Department continues to work to preserve floodplains as open space, including through the recording of restrictive covenants required in conjunction with approved subdivisions.

Lead Agency	City Planning Dept.
Funding Source	Local
Current Status	Ongoing; Bi-annual

FL-l. Mitigate Riverside Park from flooding. Riverside Park is located at the west city limits, and adjacent to the Nooksack River and Everson Wastewater Treatment Plant. When flooded, this site is littered with debris from the floodwaters.

Lead Agency	City Public Works Dept.
Funding Source	Local/State/Federal
Current Status	Discontinued

Landslide/erosion

No actions ongoing, discontinued, or completed for this hazard.

Landslide Subsidence

SU-a. Map and Assess Vulnerability to Subsidence. The City Planning Department continues to map and assess vulnerability to subsidence, including through 2016 updates to the City critical areas ordinance.

Lead Agency	City Planning Dept.
Funding Source	Local
Current Status	Ongoing

SU-b. Manage Development in High-Risk Areas. The City Building Department continues to manage development in high risk areas, including through required geologically hazardous area site assessment reports.



Lead Agency	City Building Dept.
Funding Source	Local
Current Status	Ongoing

Lightning

No actions ongoing, discontinued, or completed for this hazard.

Severe Storm

No actions ongoing, discontinued, or completed for this hazard.

Severe Wind

SW-a. Protect Power Lines and Infrastructure. The City Public Works Department continues to work to protect power lines and infrastructure through as-needed inspections following major wind events and coordination with Puget Sound Energy.

Lead Agency	City Public Works Dept.
Funding Source	Local
Current Status	Ongoing

SW-b. Retrofit Public Buildings and Critical Facilities. The City Public Works Department continues work to protect public buildings and infrastructure, including through undergrounding of power lines and provision of back-up power generation at critical facilities.

Lead Agency	City Public Works Dept.
Funding Source	Local
Current Status	Ongoing

Tornadoes

No actions ongoing, discontinued, or completed for this hazard.

Tsunami

No actions ongoing, discontinued, or completed for this hazard.

Wildfire

No actions ongoing, discontinued, or completed for this hazard.

Winter storms/Freezes



WW-a. Protect Buildings and Infrastructure. The City Public Works Department continues to work to protect public buildings and infrastructure from severe winter storms, including through replacing and upgrading all City water meters to increase system resiliency.

Lead Agency	City Public Works Dept.
Funding Source	Local
Current Status	Ongoing

WW-b. Protect Power Lines. The City Public Works Department continues to work to protect power lines through as-needed inspections following major winter storm events and coordination with Puget Sound Energy.

Lead Agency	City Public Works Dept.
Funding Source	Local
Current Status	Ongoing

WW-c. Reduce Impacts to Roadways. The City Public Works Department continues to work to reduce impacts to roadways, including through implementation of road closures during major freeze/thaw events.

Lead Agency	City Public Works Dept.
Funding Source	Local
Current Status	Ongoing

Multiple Hazards

MU-a. Assess Community Risk. The City Planning and Public Works Departments continue to assess risks to the public from natural hazards, including through review of repetitive loss properties and review and adoption of updated hazard maps.

Lead Agency	City Planning and Public Works Depts.
Funding Source	Local
Current Status	Ongoing

MU-b. Map Community Risk. The City Planning Department continues to work to map natural hazard areas and assess the risks associated with such areas, including through the 2016 update of the City’s critical areas ordinance.

Lead Agency	City Planning Dept.
Funding Source	Local
Current Status	Ongoing



MU-c. Prevent Development in Hazard Areas. The City Building and Planning Departments continue to prevent development in hazard areas, including through enforcement of floodway, steep slopes and erosion hazard area regulations.

Lead Agency	City Building and Planning Depts.
Funding Source	Local
Current Status	Ongoing

MU-d. Adopt Development Regulations in Hazard Areas. The City Building and Planning Departments continue to work to adopt regulations addressing hazard areas, including through the 2016 update to the City’s critical areas ordinance and the 2019 adoption of updated FEMA flood insurance rate maps and Flood Damage Prevention ordinance.

Lead Agency	City Building and Planning Depts.
Funding Source	Local
Current Status	Ongoing

MU-e. Limit Density in Hazard Areas. The City Planning Department continues to work to limit density in hazard areas, including through adoption of floodway regulations and establishment of low-density zones in hazard areas, such as Agriculture and Recreational Open Space.

Lead Agency	City Planning Dept.
Funding Source	Local
Current Status	Ongoing

MU-f. Integrate Mitigation into Local Planning. The City Planning Department continues to integrate mitigation into local planning, including through establishment and enforcement of mitigation requirements under the City’s critical areas regulations.

Lead Agency	City Planning Dept.
Funding Source	Local
Current Status	Ongoing

MU-g. Strengthen Land Use Regulations. The City Planning Department continues to work to strengthen local land use regulations, including through the 2016 update of the City’s critical areas ordinance and 2019 updates to the City’s Flood Damage Prevention ordinance.



Lead Agency	City Planning Dept.
Funding Source	Local
Current Status	Ongoing

MU-h. Monitor Mitigation Plan Implementation. The City Planning and Public Works Departments continue to monitor implementation of the Natural Hazards Mitigation Plan through the required annual review process.

Lead Agency	City Planning and Public Works Depts.
Funding Source	Local
Current Status	Ongoing

MU-i. Protect Structures. The City Building and Public Works Departments continue to work to protect structures within the City through enforcement of local building codes and critical areas regulations.

Lead Agency	City Building and Public Works Depts.
Funding Source	Local
Current Status	Ongoing

MU-j. Protect Infrastructure and Critical Facilities. The City Public Works Department continues to work to protect infrastructure and critical facilities, including through regular inspections, annual maintenance projects and capital improvement projects, such as elevating critical facilities above minimum standards.

Lead Agency	Public Works Dept.
Funding Source	Local
Current Status	Ongoing

MU-k. Increase Hazard Education and Risk Awareness. The City Public Works Department continues to work to increase hazard education and risk awareness, including through informational materials included in quarterly newsletters and posted on the City website.

Lead Agency	Public Works Dept.
Funding Source	Local
Current Status	Ongoing



Everson 2021-2025 Hazard Mitigation Strategy

Whatcom County Hazard Mitigation Goals

Whatcom County has identified five overarching hazard mitigation goals, which represent what a community seeks to achieve through mitigation actions.

- Goal 1.** Protect Life, Property and Public Welfare
- Goal 2.** Increase Public Awareness
- Goal 3.** Preserve and Enhance Natural Systems
- Goal 4.** Encourage Partnership for Implementation
- Goal 5.** Ensure Continuity of Emergency Services

These countywide goals help guide any prioritization and implementation of mitigation actions, ensuring that the actions contribute to a community's vision for the future.

Everson-Specific Hazard Mitigation Goals

Everson supports the above county-wide goals. No additional community-specific mitigation planning goals have been identified at this time.

Mitigation Action Options

Appendix E of the Whatcom County Natural Hazard Mitigation Plan provides a list of mitigation options. Everson considered mitigation options related to earthquakes, drought, land subsidence, winter storms, severe wind, and erosion; and especially those related to flooding because these hazards have the potential to cause the greatest loss and damage. Not all mitigation options in Appendix E were relevant or a strong priority for Everson. Some options have already been implemented or are ongoing in Everson, as documented in the section above on the status of 2016-2020 and ongoing hazard mitigation actions.

Mitigation Action Prioritization

The mitigation actions in this section are new actions that Everson has prioritized for the 2021-2025 planning period and beyond. Mitigation options were prioritized based upon review of the following two criteria: 1) The action's Overall Feasibility based on engineering, environmental, financial, and political considerations, 2) The Criticality of the action, based upon a consideration of which actions had the greatest potential to protect life, property, and public



welfare. Everson is working in cooperation with the County and other participating communities and special districts to develop a systematic methodology that would use multiple evaluation criteria to determine mitigation action prioritization. This new methodology will be used in future updates of this Plan.

In the following Identified Mitigation Actions 2021-2025 table, each priority action is listed by hazard. Each action is followed by planning goals, lead agency, the priority evaluation, timeline, funding source and estimated cost, where such information is available. This information can be used by local decision makers in pursuing strategies for implementation.

1	Goals	Indicates the hazard mitigation planning goal or goals this action addresses; countywide and/or community-specific
2	Lead Agency	May be more than one lead agency indicating shared responsibility and coordination
3	Priority:	H (High); M (Medium); L (Low)
4	Timeline:	Short-Range (less than 2 years); Mid-Range (2-5 years); Long-Range (more than 5 years)
5	Funding Source:	Local; State; FEMA; Private; Other
6	Estimated Cost:	Actual; Estimated



Everson Hazard Mitigation Strategy 2021-2025

CITY OF EVERSON IDENTIFIED MITIGATION ACTIONS 2021-2025							
MITIGATION ACTIONS		(1) Goals	(2) Lead Responsibility	(3) Priority	(4) Timeline	(5) Funding Source	(6) Estimated Cost
Hazard	Action Items						
GENERAL: ALL HAZARDS Education and Awareness Actions	These are actions that inform and educate citizens, elected officials, and property owners about hazards and ways to mitigate them.						
	<i>G-a Ongoing – Adopt and Enforce Building Codes</i>	1	Everson Planning, Building, and Public Works Department	M	O	Local	Staff
Hazard Specific (Reference: Whatcom County Mitigation Ideas)	Actions communities should consider to identify and evaluate a range of potential mitigation actions for reducing risk to natural hazards and disasters.						
Dam/Levee Failures	No actions are currently being considered/All mitigation actions are ongoing, discontinued, or complete.						

Priority: H (High); M (Medium); L (Low)
 Timeline: Short-Range (less than 2 years); Mid-Range (2-5 years); Long-Range (more than 5 years); Ongoing
 Funding Source: Local; State; FEMA; Private; Other
 Estimated Cost: Actual; Estimated



CITY OF EVERSON IDENTIFIED MITIGATION ACTIONS 2021-2025							
MITIGATION ACTIONS		(1) Goals	(2) Lead Responsibility	(3) Priority	(4) Timeline	(5) Funding Source	(6) Estimated Cost
Hazard	Action Items						
(See: Flooding)							
Droughts/Heat Waves	<i>D-a Ongoing – Assess Vulnerability to Drought Risk</i>	1, 5	Planning	M	O	Local	Staff
	<i>D-b Ongoing – Monitor Drought Conditions</i>	1	Public Works	M	O	Local	Staff
	<i>D-c Ongoing – Monitor Water Supply</i>	1	Public Works	M	O	Local	Staff
	<i>D-d Ongoing – Plan for Drought</i>	1, 5	Planning	M	O	Local	Staff
	<i>D-e Ongoing – Require Water Conservation During Drought Conditions</i>	1, 3	Public Works	M	O	Local	Staff
	<i>D-f Ongoing – Educate Residents on Water Saving Techniques</i>	2	City Administration	M	O	Local	Staff
Volcano	<p>VOL-1 Lahar Early Warning System The USGS has designed a number of systems that automatically detect lahars as they descend neighboring valleys. These systems then automatically trigger various types of early warning systems, such as sirens or telephone-based warning systems.</p>	1, 2, 5	Whatcom County Fire District 1, Everson Police Department, Whatcom County Department of Emergency Management,	L	L	Local sources, and state and federal grants	Unknown

Priority: H (High); M (Medium); L (Low)	Timeline: Short-Range (less than 2 years); Mid-Range (2-5 years); Long-Range (more than 5 years); Ongoing	Funding Source: Local; State; FEMA; Private; Other	Estimated Cost: Actual; Estimated
---	---	--	---



CITY OF EVERSON IDENTIFIED MITIGATION ACTIONS 2021-2025							
MITIGATION ACTIONS		(1) Goals	(2) Lead Responsibility	(3) Priority	(4) Timeline	(5) Funding Source	(6) Estimated Cost
Hazard	Action Items						
			Whatcom County Public Works				
Earthquakes	<i>EQ-a Ongoing – Incorporate Earthquake Mitigation into Local Planning</i>	1	Planning	M	O	Local	Staff
	<i>EQ-2 Ongoing – Map and Assess Community Vulnerability to Seismic Hazards</i>	1	Planning	M	O	Local	Staff
	<i>EQ-c Ongoing – Conduct Inspections for Building Safety</i>	1	City Building Department	M	O	Local	Staff
	<i>EQ-d Ongoing – Protect Critical Facilities and Infrastructure</i>	1	City Building and Public Works	M	O	Local	Staff
	EQ-1 Retrofit or Relocate City Hall, Police Station and Fire District Station The Everson City Hall, Police Station and Whatcom County Fire District 1's station would suffer significant damage in the event of an earthquake. These facilities should be retrofitted, replaced, or relocated so that they can survive a 6.0 magnitude or greater earthquake event.	1, 5	Everson City Councils, Whatcom County Building Department, Whatcom County Fire District 1 Commissioners	H	M	Local sources, and state and federal grants	\$7 Million

Priority: H (High); M (Medium); L (Low)	Timeline: Short-Range (less than 2 years); Mid-Range (2-5 years); Long-Range (more than 5 years); Ongoing	Funding Source: Local; State; FEMA; Private; Other	Estimated Cost: Actual; Estimated
---	---	--	---



CITY OF EVERSON IDENTIFIED MITIGATION ACTIONS 2021-2025							
MITIGATION ACTIONS		(1) Goals	(2) Lead Responsibility	(3) Priority	(4) Timeline	(5) Funding Source	(6) Estimated Cost
Hazard	Action Items						
Extreme Temperatures	ET-1 No actions are currently being considered/All mitigation actions are ongoing, discontinued, or complete.						
Flooding	<i>FL-a Ongoing – Incorporate Flood Mitigation into Local Planning</i>	1, 3	Planning	M	O	Local	Staff
	<i>FL-b Ongoing -- Form Partnerships to Support Floodplain Management</i>	1, 5	Planning and Public Works	M	O	Local	Staff
	<i>FL-c Ongoing -- Limit or Restrict Development in Floodplain Areas</i>	1, 3	City Planning, Building and Public Works Depts.	M	O	Local	Staff
	<i>FL-d Ongoing – Improve Stormwater Management Planning</i>	1, 3	City Planning	M	O	Local	Staff
	<i>FL-e Ongoing -- Improve Flood Risk Assessment</i>	1	Public Works	M	O	Local	Staff
	<i>FL-f Ongoing -- Join or Improve Compliance with NFIP</i>	1	City Planning, Building and Public Works Depts.	M	O	Local	Staff
	<i>FL-g Ongoing -- Manage the Floodplain Beyond</i>	1, 3	City Planning	M	O	Local	Staff

Priority: H (High); M (Medium); L (Low)	Timeline: Short-Range (less than 2 years); Mid-Range (2-5 years); Long-Range (more than 5 years); Ongoing	Funding Source: Local; State; FEMA; Private; Other	Estimated Cost: Actual; Estimated
---	---	--	---



CITY OF EVERSON IDENTIFIED MITIGATION ACTIONS 2021-2025							
MITIGATION ACTIONS		(1) Goals	(2) Lead Responsibility	(3) Priority	(4) Timeline	(5) Funding Source	(6) Estimated Cost
Hazard	Action Items						
	<i>Minimum Requirements</i>		and Building Depts				
	<i>FL-h Ongoing -- Establish Local Funding Mechanisms for Flood Mitigation</i>	1, 3	County Flood Control Zone District	M	O	County	Staff
	<i>FL-i Ongoing -- Improve Stormwater Drainage System Capacity</i>	1, 3	Public Works	M	O	Local	Staff
	<i>FL-j Ongoing -- Conduct Regular Maintenance for Drainage Systems and Flood Control Structures</i>	1, 3	Public Works	M	O	Local	Staff
	<i>FL-k Ongoing -- Preserve Floodplains as Open Space</i>	1, 2, 4	Planning	M	O	Local	Staff
	FL-1 Mitigate critical facilities in the 100-year floodplain. The Everson City Hall, Police Station and Whatcom County Fire District 1's station are located in the 100-year floodplain. These should be mitigated in place or moved out of the floodplain.	1, 5	Everson City Councils Whatcom County Public Works Department, Whatcom County Fire District 1	H	M	Local sources, and state and federal grants	\$7 Million

Priority: H (High); M (Medium); L (Low)	Timeline: Short-Range (less than 2 years); Mid-Range (2-5 years); Long-Range (more than 5 years); Ongoing	Funding Source: Local; State; FEMA; Private; Other	Estimated Cost: Actual; Estimated
---	---	--	---



CITY OF EVERSON IDENTIFIED MITIGATION ACTIONS 2021-2025							
MITIGATION ACTIONS		(1) Goals	(2) Lead Responsibility	(3) Priority	(4) Timeline	(5) Funding Source	(6) Estimated Cost
Hazard	Action Items						
			Commissioners				
	<p>FL-2 Purchase Repetitive Loss Properties in the Floodplain There are several properties in the floodplain that have been repeatedly damaged by past flood events. Most of these repetitive loss properties were in Whatcom County's jurisdiction and were purchased by the County.</p>	1, 2, 3, 4	Whatcom County, Everson City Council	M	L	Local sources, and state and federal grants	\$2 Million
Landslide/Erosion/Land Subsidence	<i>SU-a Ongoing -- Map and Assess Vulnerability to Subsidence</i>	1	Planning	M	O	Local	Staff
	<i>SU-b Ongoing -- Manage Development in High-Risk Areas</i>	1	Building Department	M	O	Local	Staff
Lightning	No actions are currently being considered/All mitigation actions are ongoing, discontinued, or						

Priority:
H (High); M (Medium); L (Low)

Timeline:
Short-Range (less than 2 years); Mid-Range (2-5 years); Long-Range (more than 5 years); Ongoing

Funding Source:
Local; State; FEMA; Private; Other

Estimated Cost:
Actual; Estimated



CITY OF EVERSON IDENTIFIED MITIGATION ACTIONS 2021-2025							
MITIGATION ACTIONS		(1) Goals	(2) Lead Responsibility	(3) Priority	(4) Timeline	(5) Funding Source	(6) Estimated Cost
Hazard	Action Items						
	complete.						
Severe Storms	No actions are currently being considered/All mitigation actions are ongoing, discontinued, or complete.						
Severe Wind	<i>SW-a Ongoing -- Protect Power Lines and Infrastructure</i>	1	City Public Works Department	M	O	Local	Staff
	<i>SW-b Ongoing -- Retrofit Public Buildings and Critical Facilities</i>	1	City Public Works Dept	M	O	Local	Staff
Tornadoes	No actions are currently being considered/All mitigation actions are ongoing, discontinued, or complete.						
Tsunami	No actions are currently being considered/All mitigation actions are ongoing, discontinued, or complete.						
Wildfires	No actions are currently being considered/All mitigation actions are ongoing, discontinued, or complete.						
Winter Storms/	<i>WW-a Ongoing -- Protect Buildings and Infrastructure</i>	1	Public Works	M	O	Local	Staff

Priority: H (High); M (Medium); L (Low)	Timeline: Short-Range (less than 2 years); Mid-Range (2-5 years); Long-Range (more than 5 years); Ongoing	Funding Source: Local; State; FEMA; Private; Other	Estimated Cost: Actual; Estimated
---	---	--	---



CITY OF EVERSON IDENTIFIED MITIGATION ACTIONS 2021-2025							
MITIGATION ACTIONS		(1) Goals	(2) Lead Responsibility	(3) Priority	(4) Timeline	(5) Funding Source	(6) Estimated Cost
Hazard	Action Items						
Freezes (Severe Winter Weather)	<i>WW-b Ongoing -- Protect Power Lines</i>	1	Public Works	M	O	Local	Staff
	<i>WW-c Ongoing -- Reduce Impacts to Roadways</i>	1	Public Works	M	O	Local	Staff
Multiple Hazards	<i>MU-a Ongoing -- Assess Community Risk</i>	1	Public Works/Planning	M	O	Local	Staff
	<i>MU-b Ongoing -- Map Community Risk</i>	1	Planning	M	O	Local	Staff
	<i>MU-c Ongoing -- Prevent Development in Hazard Areas</i>	1, 3	Planning and Building Depts.	M	O	Local	Staff
	<i>MU-d Ongoing -- Adopt Development Regulations in Hazard Areas</i>	1	Planning and Building Depts	M	O	Local	Staff
	<i>MU-e Ongoing -- Limit Density in Hazard Areas</i>	1	Planning and Building Depts	M	O	Local	Staff
	<i>MU-f Ongoing -- Integrate Mitigation into Local Planning</i>	1	Planning	M	O	Local	Staff
	<i>MU-g Ongoing -- Strengthen Land Use Regulations</i>	1	Planning	M	O	Local	Staff
	<i>MU-h Ongoing -- Monitor Mitigation Plan Implementation</i>	1	Planning and Public Works	M	O	Local	Staff
	<i>MU-i Ongoing -- Protect Structures</i>	1	Building and	M	O	Local	Staff

Priority:
H (High); M (Medium); L (Low)

Timeline:
Short-Range (less than 2 years); Mid-Range (2-5 years); Long-Range (more than 5 years); Ongoing

Funding Source:
Local; State; FEMA; Private; Other

Estimated Cost:
Actual; Estimated

Exhibit A



CITY OF EVERSON IDENTIFIED MITIGATION ACTIONS 2021-2025							
MITIGATION ACTIONS		(1) Goals	(2) Lead Responsibility	(3) Priority	(4) Timeline	(5) Funding Source	(6) Estimated Cost
Hazard	Action Items						
			Public Works Depts				
	MU-j Ongoing -- Protect Infrastructure and Critical Facilities	1	Public Works	M	O	Local	Staff
	MU-k Ongoing -- Increase Hazard Education and Risk Awareness	1	Public Works	M	O	Local	Staff
	MU-1 Mitigate the wastewater treatment plant from hazards. Construct a ring dike, flood wall or otherwise mitigate the wastewater treatment plant against a 100-year flood event or volcanic lahars.	1	Everson Public Works Department	H	S	Local, State, and Federal	\$250,000
	MU-2 Community Early Warning System The City of Everson has an outdated civil defense siren that has not been in service or activated in several years. A new audible warning system located in Everson downtown, Strandell neighborhood, and also the City of Nooksack needs to be constructed. Such an early warning system would typically be a series of sirens that could be triggered in the event the Cities needed to be evacuated, or	1, 2, 5	Whatcom County Fire District 1, Everson Police Department, Everson/Nooksack Public Works	M	L	Local sources, and state and federal grants	\$150,000

Priority: H (High); M (Medium); L (Low)	Timeline: Short-Range (less than 2 years); Mid-Range (2-5 years); Long-Range (more than 5 years); Ongoing	Funding Source: Local; State; FEMA; Private; Other	Estimated Cost: Actual; Estimated
---	---	--	---



CITY OF EVERSON IDENTIFIED MITIGATION ACTIONS 2021-2025							
MITIGATION ACTIONS		(1) Goals	(2) Lead Responsibility	(3) Priority	(4) Timeline	(5) Funding Source	(6) Estimated Cost
Hazard	Action Items						
	emergency information disseminated.						
	MU-3 Tone Radio Based Early Warning System Tone Radios turn on when triggered by a central transmitter and then information or instructions are announced over the radio. Such a system is currently used for various types of weather radios, for tornados and severe storms hazard areas. A similar system could be put into place for warning of flooding, lahars, and other related natural hazards.	1, 2, 5	Whatcom County Department of Emergency Management, NOAA Radio		L	Local sources, and state and federal grants	
Advanced Mitigation Projects (Dream List)	Earthquake Early Warning System Such a system could warn residence of an impending earthquake. Technology doesn't currently exist for such a system, but will likely be possible in the future.	1, 2, 5	Federal, State, County, and local entities	L	L	Local sources, and state and federal grants	Unknown
	Cell Phone-Based Early Warning System. A computerized early warning system that automatically dials each landline telephone number within a specified area, and play a recorded message when the phone is answered is currently provided to the City by the Whatcom County Sheriff's Office Division of	1, 2, 5	WCDEM/LFD	M	M	Local sources, and state and federal grants	Unknown

Priority: H (High); M (Medium); L (Low)	Timeline: Short-Range (less than 2 years); Mid-Range (2-5 years); Long-Range (more than 5 years); Ongoing	Funding Source: Local; State; FEMA; Private; Other	Estimated Cost: Actual; Estimated
---	---	--	---



CITY OF EVERSON IDENTIFIED MITIGATION ACTIONS 2021-2025							
MITIGATION ACTIONS		(1) Goals	(2) Lead Responsibility	(3) Priority	(4) Timeline	(5) Funding Source	(6) Estimated Cost
Hazard	Action Items						
	Emergency Management. A larger capacity system that can also contact cell phones through the use of a federally licensed COG would help to address a variety of natural and manmade problems.						
	Purchase Repetitive Loss Properties	1, 2, 4	Whatcom County, Everson City Council	M	L	Local sources and state and federal grants	\$2 Million
	Mitigate City Hall, Police Station and Fire Station against 100-year flood event or volcanic lahar	1, 5	Everson City Councils, Whatcom County Building Department, Whatcom County Fire District 1 Commissioners	H	M	Local sources, and state and federal grants	\$7 Million

Priority: H (High); M (Medium); L (Low)	Timeline: Short-Range (less than 2 years); Mid-Range (2-5 years); Long-Range (more than 5 years); Ongoing	Funding Source: Local; State; FEMA; Private; Other	Estimated Cost: Actual; Estimated
---	---	--	---



Everson Annual Review and Progress for Hazard-Specific Mitigation Actions 2021-2025

Progress monitoring means tracking the implementation of the hazard specific mitigation actions over time. Each jurisdiction must identify how, when, and by whom action items will be monitored. The responsible agency assigned to each mitigation action is responsible for tracking and reporting on each of their actions.

Annual review and progress reporting includes the following:

- Step One:** Identify mitigation actions that your planning team has identified for the annual review. The planning team has the option to address ALL action items, or only those that should be acted on during each review cycle.
- Step Two:** Use the table below to track annual progress. For each action item selected for annual review insert the appropriate letter that indicates the status of that action item.
- Step Three:** Complete a progress report form as illustrated in Appendix G for each mitigation action item selected for annual review
- Step Four:** Submit the completed form(s) to the Whatcom County DEM.



City of Everson Hazard-Specific Action Items 2021-2025 – Annual Review and Progress						
Action Items	Status (Choose One & Enter Letter): A. Completed; B. In Progress (on schedule); C. In Progress (delayed); D. Delayed Until Funding Available; E. Canceled					Notes on yearly progress
	2021	2022	2023	2024	2025	
GENERAL: ALL HAZARDS						
<i>G-a. Adopt and enforce building codes.</i>						
<i>Add New Action Items if Applicable</i>						
DAM/LEVEE FAILURES						
<i>Add New Action Items if Applicable</i>						
DROUGHTS/HEAT WAVES						
<i>D-a. Assess Vulnerability to Drought Risk.</i>						
<i>D-b. Monitor Drought Conditions.</i>						
<i>D-c. Monitor Water Supply.</i>						
<i>D-d. Plan for Drought.</i>						
<i>D-e. Require Water Conservation During Drought Conditions.</i>						
<i>D-f. Educate Residents on Water Saving Techniques.</i>						
EARTHQUAKES						
<i>EQ-a. Incorporate Earthquake Mitigation into Local Planning.</i>						
<i>EQ-b. Map and Assess Community Vulnerability to Seismic Hazards.</i>						
<i>EQ-c. Conduct Inspections of Building Safety.</i>						
<i>EQ-d. Protect Critical Facilities and Infrastructure.</i>						
EQ-1 Retrofit City Hall						
<i>Add New Action Items if Applicable</i>						
VOLCANO						



City of Everson Hazard-Specific Action Items 2021-2025 – Annual Review and Progress						
Action Items	Status (Choose One & Enter Letter): A. Completed; B. In Progress (on schedule); C. In Progress (delayed); D. Delayed Until Funding Available; E. Canceled					
	2021	2022	2023	2024	2025	Notes on yearly progress
VOL-1 Lahar Early Warning System						
<i>Add New Action Items if Applicable</i>						
FLOODING						
<i>FL-a. Incorporate Flood Mitigation in Local Planning.</i>						
<i>FL-b. Form Partnerships to Support Floodplain Management.</i>						
<i>FL-c. Limit or Restrict Development in Floodplain Areas.</i>						
<i>FL-d. Improve Stormwater Management Planning.</i>						
<i>FL-e. Improve Flood Risk Assessment.</i>						
<i>FL-f. Join or Improve Compliance with NFIP.</i>						
<i>FL-g. Manage the Floodplain Beyond Minimum Requirements.</i>						
<i>FL-h. Establish Local Funding Mechanisms for Flood Mitigation.</i>						
<i>FL-i. Improve Stormwater Drainage System Capacity</i>						
<i>FL-j. Conduct Regular Maintenance for Drainage Systems and Flood Control Structures.</i>						
<i>FL-k. Preserve Floodplains as Open Space.</i>						
<i>FL-l. Mitigate Riverside Park from flooding.</i>						
FL-1 Mitigate critical facilities in the 100-year floodplain.						
FL-2 Purchase Repetitive Loss Properties in the Floodplain						
<i>Add New Action Items if Applicable</i>						



City of Everson Hazard-Specific Action Items 2021-2025 – Annual Review and Progress						
Action Items	Status (Choose One & Enter Letter): A. Completed; B. In Progress (on schedule); C. In Progress (delayed); D. Delayed Until Funding Available; E. Canceled					
	2021	2022	2023	2024	2025	Notes on yearly progress
LANDSLIDES/EROSION						
<i>Add New Action Items if Applicable</i>						
LAND SUBSIDENCE						
<i>SU-a. Map and Assess Vulnerability to Subsidence.</i>						
<i>SU-b. Manage Development in High-Risk Areas.</i>						
<i>Add New Action Items if Applicable</i>						
TORNADOES						
<i>Add New Action Items if Applicable</i>						
TSUNAMI						
<i>Add New Action Items if Applicable</i>						
WILDFIRES						
<i>Add New Action Items if Applicable</i>						
WINTER STORMS/FREEZES (SEVERE WINTER WEATHER)						
<i>WW-a. Protect Buildings and Infrastructure.</i>						
<i>WW-b. Protect Power Lines.</i>						
<i>WW-c. Reduce Impacts to Roadways.</i>						
<i>Add New Action Items if Applicable</i>						
EXTREME TEMPERATURES						
<i>Add New Action Items if Applicable</i>						
LANDSLIDE						
<i>Add New Action Items if Applicable</i>						



City of Everson Hazard-Specific Action Items 2021-2025 – Annual Review and Progress						
Action Items	Status (Choose One & Enter Letter): A. Completed; B. In Progress (on schedule); C. In Progress (delayed); D. Delayed Until Funding Available; E. Canceled					
	2021	2022	2023	2024	2025	Notes on yearly progress
LIGHTNING						
<i>Add New Action Items if Applicable</i>						
SEVERE WIND						
<i>SW-a. Protect Power Lines and Infrastructure.</i>						
<i>SW-b. Retrofit Public Buildings and Critical Facilities.</i>						
<i>Add New Action Items if Applicable</i>						
MULTIPLE HAZARDS						
<i>MU-a. Assess Community Risk.</i>						
<i>MU-b. Map Community Risk.</i>						
<i>MU-c. Prevent Development in Hazard Areas.</i>						
<i>MU-d. Adopt Development Regulations in Hazard Areas.</i>						
<i>MU-e. Limit Density in Hazard Areas.</i>						
<i>MU-f. Integrate Mitigation into Local Planning.</i>						
<i>MU-g. Strengthen Land Use Regulations.</i>						
<i>MU-h. Monitor Mitigation Plan Implementation.</i>						
<i>MU-i. Protect Structures.</i>						
<i>MU-j. Protect Infrastructure and Critical Facilities.</i>						
<i>MU-k. Increase Hazard Education and Risk Awareness.</i>						
MU-1 Mitigate the wastewater treatment plant from hazards.						
MU-2 Community Early Warning System						
MU-3 Tone Radio Based Early Warning System						



City of Everson Hazard-Specific Action Items 2021-2025 – Annual Review and Progress						
Action Items	Status (Choose One & Enter Letter): A. Completed; B. In Progress (on schedule); C. In Progress (delayed); D. Delayed Until Funding Available; E. Canceled					Notes on yearly progress
	2021	2022	2023	2024	2025	
Add New Action Items if Applicable						



This Page Left Blank Intentionally.