

Plan for Prosecutorial Change

Protecting community, saving taxpayer money, and reducing incarceration

Eric Richey
Whatcom County Prosecutor
March 12, 2019





Support for Victims of Crime

Seek to provide as much support to victims in system as possible.

Victims rights under RCW 7.69.030 are our priority.

Follow best practices in supporting victims – ensuring that our protocols are trauma-informed.

Drug use as a health concern

- For too long, we have focused on drug use as a criminal act
- Addiction is an issue for public safety and public health to work together on
- Drug Court
 - Successful diversion court, meeting best practices
 - Expanding criteria for entry
 - Decreasing time to admission decision (process improvement)



Mental Health Court

- Mental Health Court is a court with a special docket designed to increase an offender's likelihood for successful rehabilitation through early, continuous and intense judicially supervised mental health treatment.
- Plan to expand access to this program.



Bail and Pre-trial Incarceration

- Goal is to reduce pre-trial jail population.
- Only seek bail in cases where person is a danger to the community or a true flight risk.
- Bail jump charges will be used less frequently in the Prosecutor's Office.

Sentencing alternatives

We will seek all sentencing alternatives when appropriate.

Some cases once prosecuted as felonies will be reduced to misdemeanors.

First time offender waivers. RCW 9.94A.650

Compromise of misdemeanors. RCW 10.22.010

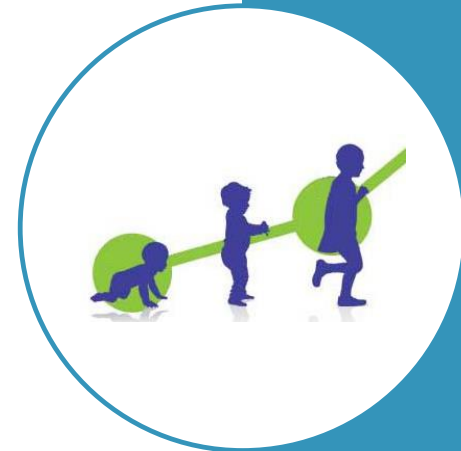
Diversion and Alternatives

- Focus for year one: LEAD
 - Law Enforcement Assisted Diversion
 - Designed for prosecutors to work with law enforcement and social workers
 - Working with partners to develop program
 - Will be looking at potential for funding
 - Goal to implement by the end of the year



Juvenile Incarceration

- Deputy prosecutors shall embrace the two mandatory diversions and consider additional diversions as appropriate
- Prevention is key – upstream interventions
- Committed to working with law enforcement and schools



Re-entry

I support vacating and sealing judgements to help remove barriers for people who want to find employment or engage in society in a productive way.

I support getting people relicensed because taking away a person's ability to drive reduces opportunities for employment.

Data and
Transparency

Data Collection shall
be a priority going
forward.

Transparency is
something that you
can count on from my
office.

Diversity
Equity
and
Inclusion

I will examine our data to see if our practices promote racial or economic disparity.

I will make sure hiring practices are fair and work toward diversity in the work place.

Culture of Learning

- We are training the entire office and the law enforcement officers that we work with.
- Ongoing training topics will include:
 - Implicit Bias
 - Diversity and Equity
 - Trauma-informed practices
 - Effective response to crime
 - Leadership development

This is a
living
document

Policies may be refined or changed when we learn of new ways to produce better outcomes that are fair, reasonable, and protect our communities.

Thank you for the opportunity to
present to you.

Questions?
Comments?
Concerns?