

## **RESOLUTION NO. 1973-25**

### **A RESOLUTION ESTABLISHING THE CITY OF BLAINE URBAN GROWTH AREA PREFERRED ALTERNATIVE FOR A 20-YEAR PLANNING PERIOD, INCLUDING AN URBAN GROWTH AREA RESERVE**

**Whereas**, the Washington State Growth Management Act (GMA) requires Whatcom County and the cities to coordinate their respective comprehensive plans by December 31, 2025; and

**Whereas**, the GMA states that urban growth areas (UGAs) must be revised to accommodate the urban growth projected to occur in the succeeding 20-year planning period by December 31, 2025 (RCW 36.70A.130); and

**Whereas**, the City of Blaine seeks to de-annex a portion of East Blaine pursuant to Resolution 1972-25; and

**Whereas**, the City of Blaine is exploring the realignment of long-term residential growth from East Blaine to West Blaine through a UGA Swap process (RCW 36.70A.130(3)(c)); and

**Whereas**, the City of Blaine desires to preserve land from urban development in the city's most sensitive aquifer recharge areas; and

**Whereas**, the City of Blaine desires to reserve land adjacent to the incorporated urban growth area for future urban densities and development by partnering with Whatcom County to limit the potential for these properties to be developed with incompatible uses and densities, which may interfere with the likely expansion of urban development in the future; and

**Whereas**, the Washington State Department of Commerce Growth Management Services interprets, based on the plain language of the statute, that UGA Swaps should only be considered during mandatory periodic updates (once a decade) and should not be considered under the annual amendment process; and

**Whereas**, while the City of Blaine has sufficient population, housing, and employment land capacity for the current comprehensive plan update in 2025, realigning the long-term residential growth of the city from East Blaine to West Blaine is a significant shift in long-range planning and requires an robust timeline to coordinate this action with landowners, the school district, fire district, affected tribes, and Whatcom County; and

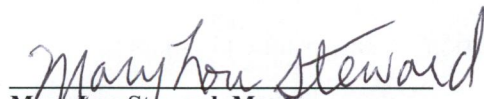
**Whereas**, final decisions on the City of Blaine urban growth area will not be made until the City of Blaine and Whatcom County comprehensive plan is adopted. The City of Blaine and Whatcom County will have opportunities to evaluate all alternatives prior to final adoption. The final Whatcom County Environmental Impact Statement will provide analysis and information to allow for a final informed decision and coordination of

transportation modeling, capital facility planning, environmental review, and final UGA recommendations.


**Now, Therefore, Be It Resolved**, that the Council of the City of Blaine agrees that the urban growth area preferred alternative is a de-annexation of a portion of East Blaine and a UGA Swap, as shown on Exhibit A. It is acknowledged that urban growth area alternatives will be studied in Whatcom County's environmental impact statement, and the final UGA alignment may differ from that set forth in this resolution.

**ADOPTED AND APPROVED BY THE CITY COUNCIL OF BLAINE,**  
**WASHINGTON** on the 12th day of May, 2025, and approved by the Mayor on the same day.

**CITY OF BLAINE COUNCIL**

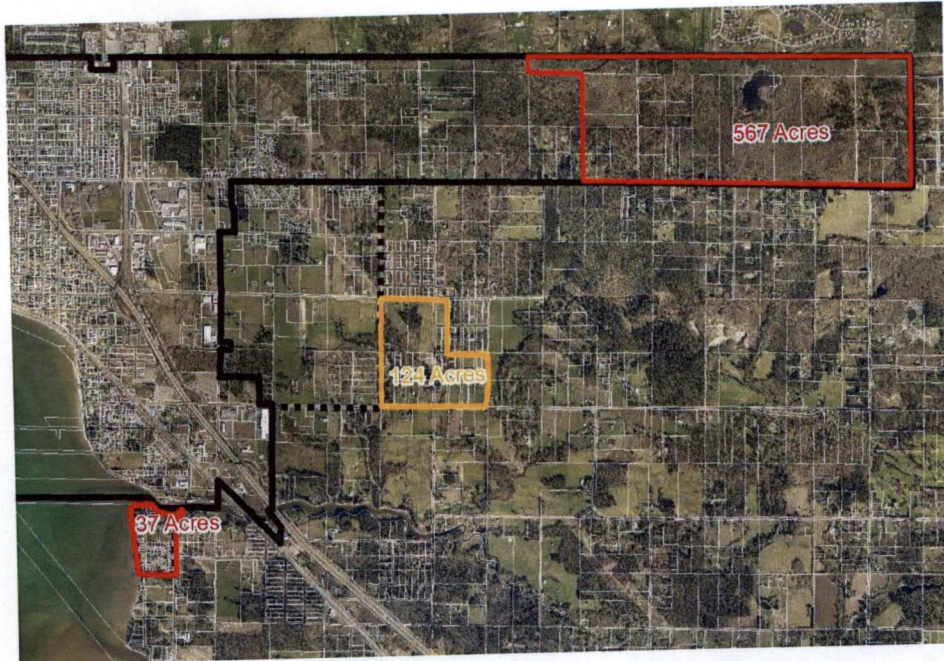
  
Mary Lou Steward, Mayor

**ATTEST/AUTHENTICATE:**

  
Samuel Crawford, City Clerk



Resolution 1973-25 - Exhibit A



- Red area 1 – 567 acres – De-annexed and removed from UGA through UGA Swap
- Red area 2 – 37 acres – Removed from unincorporated UGA through UGA Swap
- Orange area – 124 acres – Added to unincorporated UGA through UGA Swap



- Yellow area – 453 acres - Added to unincorporated UGA through UGA Swap
- Purple area 1 – 58 acres - Added as a UGA Reserve
- Purple area 2 – 481 acres - Added as a UGA Reserve

Please note all graphic depictions are approximate and area calculations are estimates only.

