

Community & Organizational Development

October 24th, 2023
Whatcom County Council



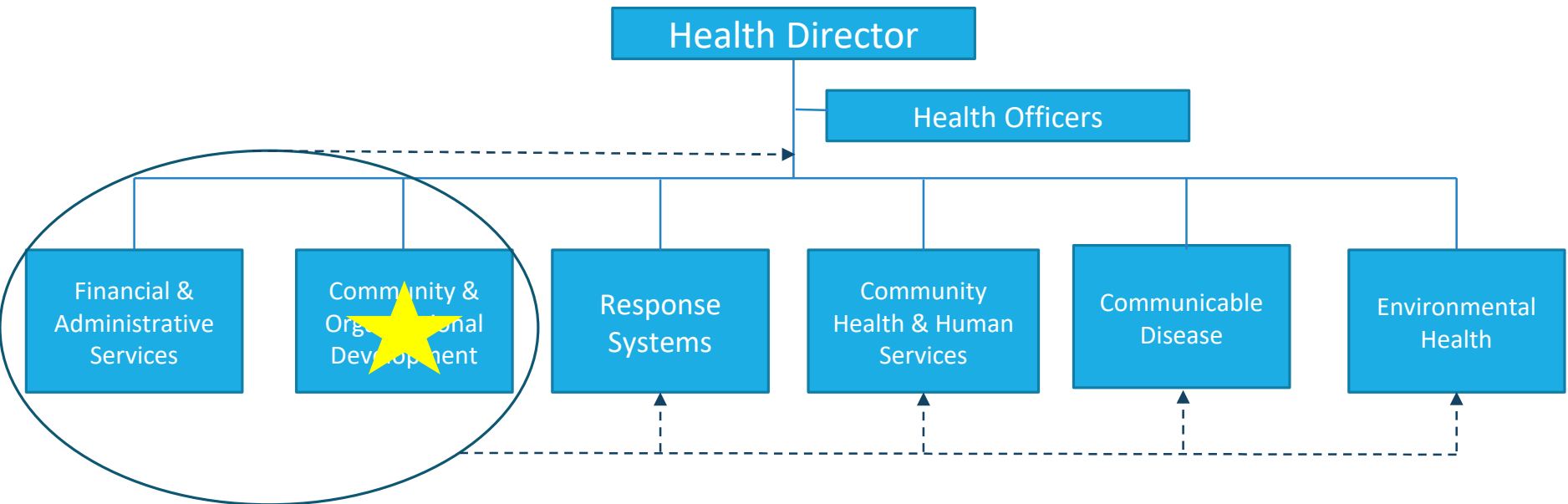
WHATCOM COUNTY
**HEALTH AND
COMMUNITY
SERVICES**



NEW Division: Community & Organizational Development



- Provide accurate and relevant data and information to the community
- Centralize services that cross-cut and connect all divisions within the department
- Add capacity for the department to implement high-level department wide priorities/projects



Alignment

Foundational Public Health Services (FPHS)

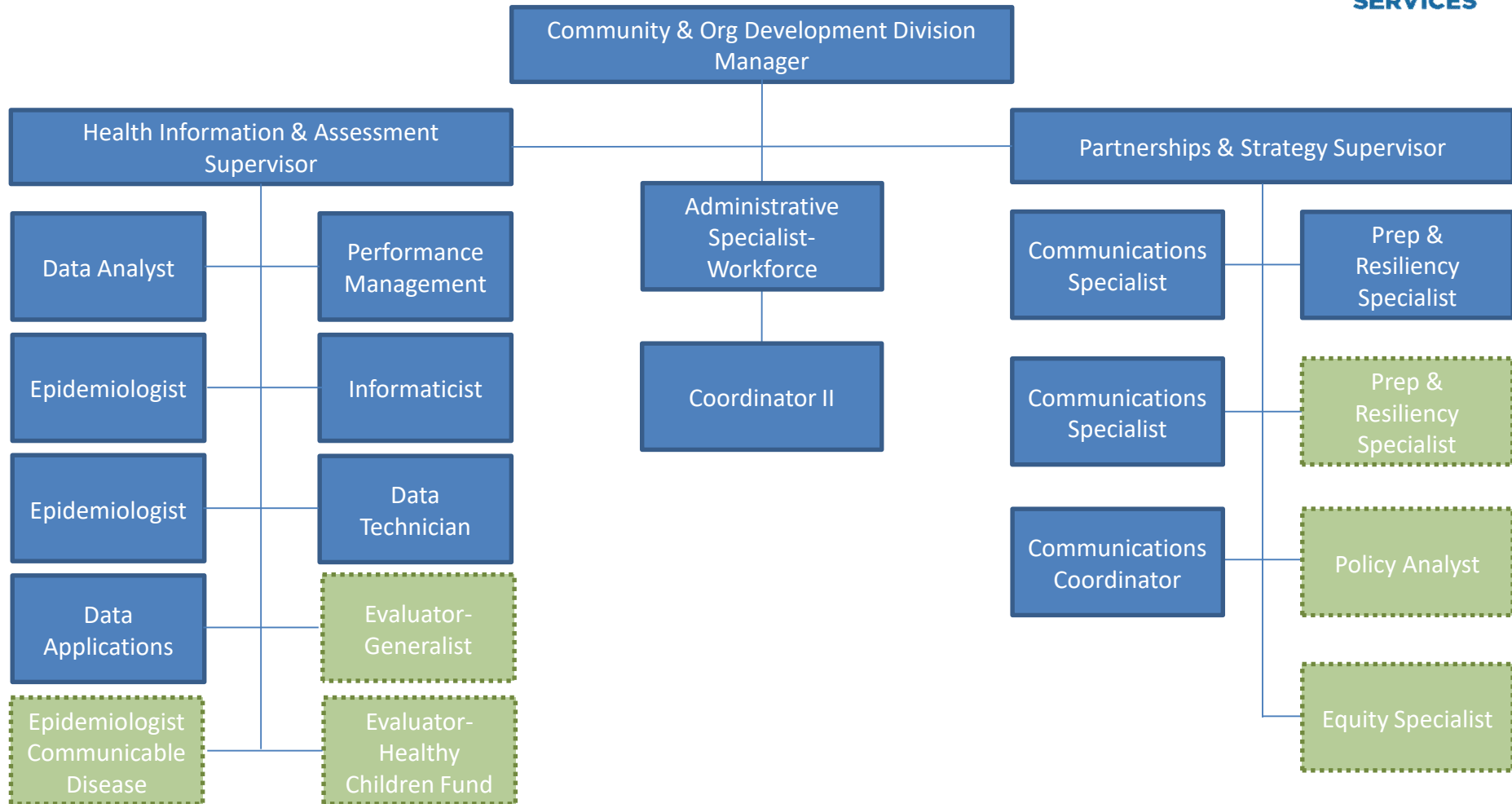
- Core capabilities
- Infrastructure for services

WCHCS Strategic Plan Priorities

- Community Partnerships & Engagement
- Organizational Infrastructure
- Workforce Development
- Quality Management



Organization





Health Information & Assessment

WHATCOM COUNTY
HEALTH AND
COMMUNITY
SERVICES

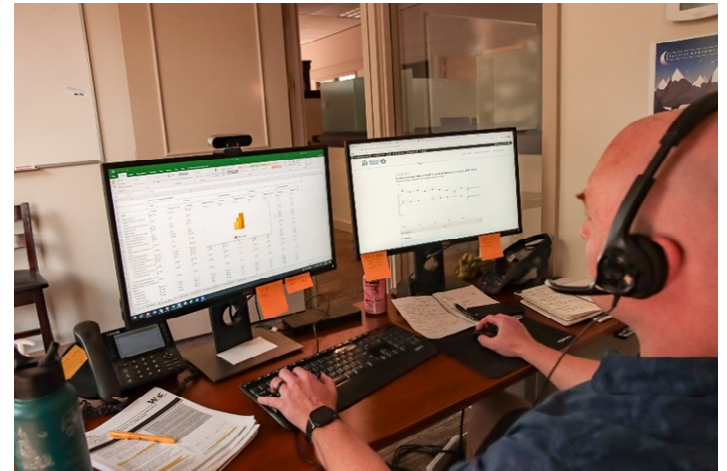
Health Information & Assessment



Areas of Focus

- Informatics & Data Support
- Assessment, Analytics & Epidemiology
- Performance Management & Evaluation
- Technical Support

Staff: 8 + 3 new positions by 2024





Partnerships & Strategy

WHATCOM COUNTY
HEALTH AND
COMMUNITY
SERVICES

Partnerships & Strategy



Areas of Focus

- Communications
- Emergency Preparedness & Response
- Policy & Equity – Coming Soon

Staff: 5 + 3 new positions by 2024





Workforce Development

WHATCOM COUNTY
HEALTH AND
COMMUNITY
SERVICES

Workforce Development



Areas of Focus

- Ensure a qualified and diverse workforce
- Create a supportive work environment
- Collaborate to address workforce gaps in health-related fields



Any Questions?

WHATCOM COUNTY
**HEALTH AND
COMMUNITY
SERVICES**