



November Atmospheric River Briefing December 7, 2021



AMSL: 2,050ft AGL: 1,503ft TGT N048°54.5712' W122°5.4840' EL: 598ft DIST: 1.0M GS DIST: 1,919M
 CBP 10:25:59 Wed Dec 01 2021
 023M° 95 NM/h
 0.8NM (00:31)
 VIDEO SPLIT 22' N
 SPD 4 MPH
 ELV 654 FT
 SAT 08 4218' V
 SLT 1.0 MI
 LRF TARGET
 49°54.5637' N
 122°08.4791' W
 ELV 664 FT
 SLT 2.4
 LIGHT TGT RF L ARMED
 LP P ARMED
 TROLL COT BLOCKED
 COT_CHAT BLOCKED
 TRACKER FOC MAN
 EXP AUT
 Riverside Dr (102-199) / Silver Lake Rd
 Maple Falls-Whatcom-East Whatcom WA (Whatcom County)

AMSL: 1,519ft AGL: 1,197ft TGT N048°51.2129' W122°8.7524' EL: 323ft DIST: 0.3M GS DIST: 1,922M
 CBP 10:22:35 Wed Dec 01 2021
 111 NM/h
 VIDEO SPLIT 9' N
 SPD 2 MPH
 ELV 0 FT
 SAT 08 4218' V
 SLT 0.61 MI
 LRF TARGET
 49°54.5637' N
 122°08.4791' W
 ELV 664 FT
 SLT 2.4
 REC SCR REC CAM
 MAN AUT
 k Rd (5839-5972) / Olive com: East Whatcom WA



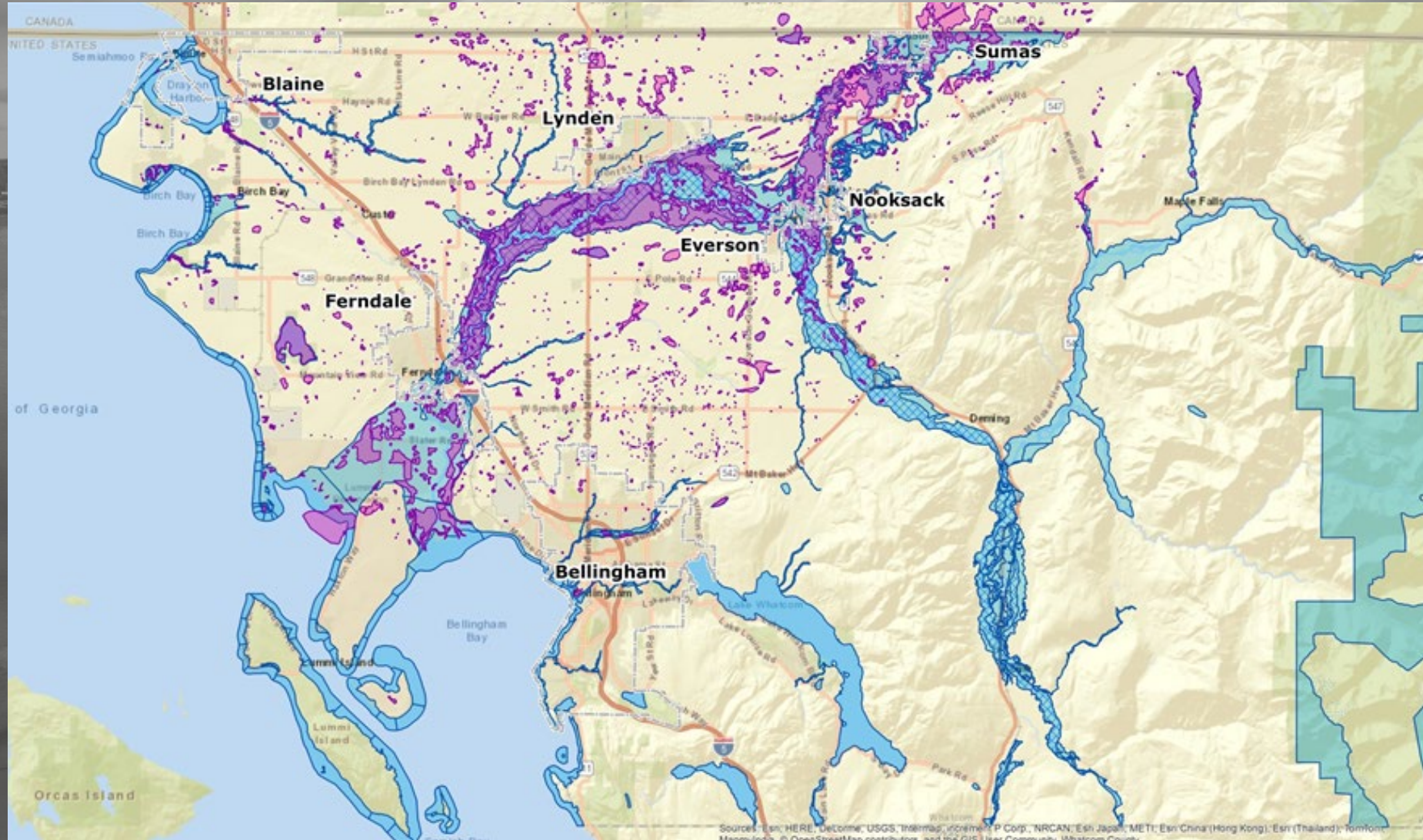




Image by Alison Boudle



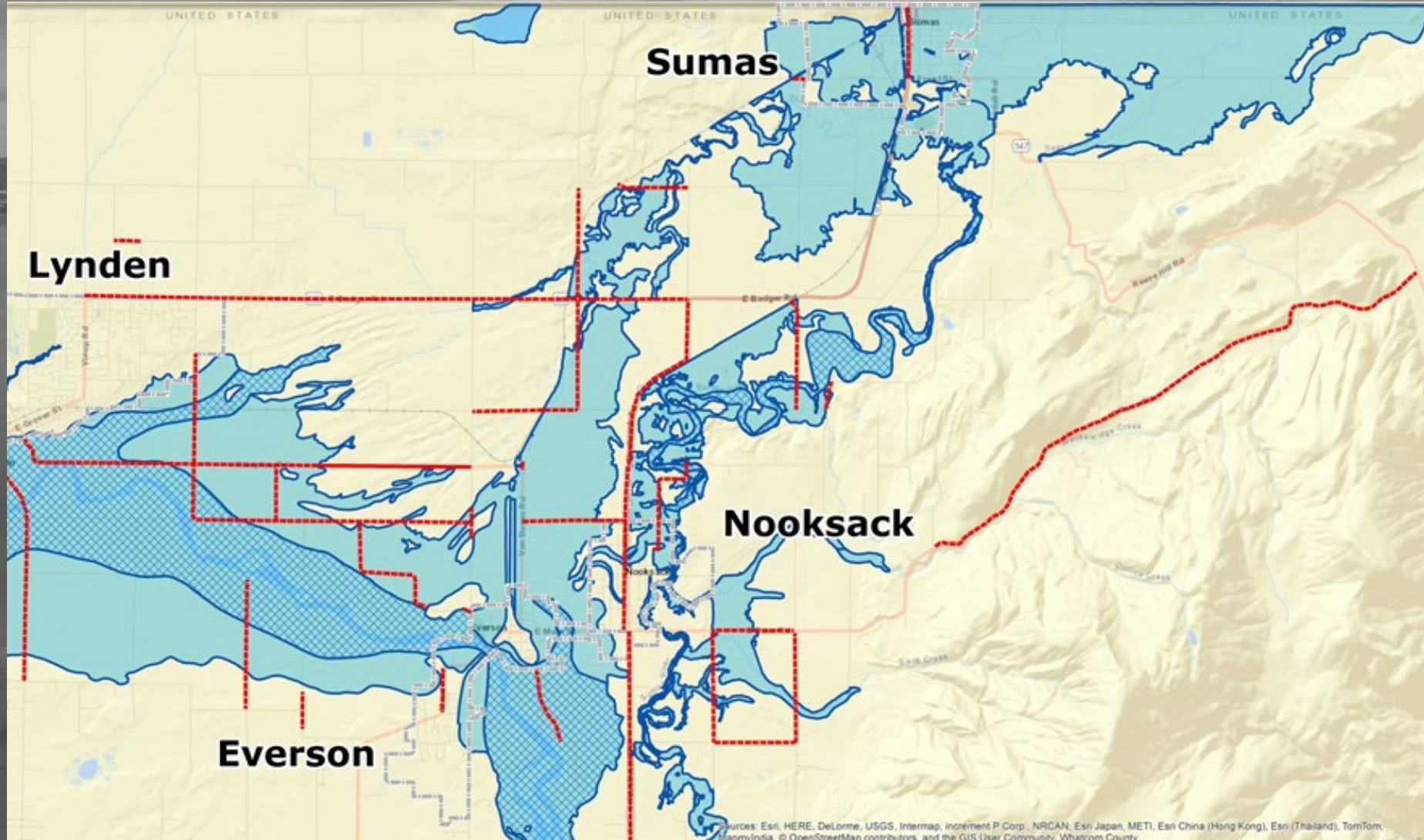
Extent Of Flooding



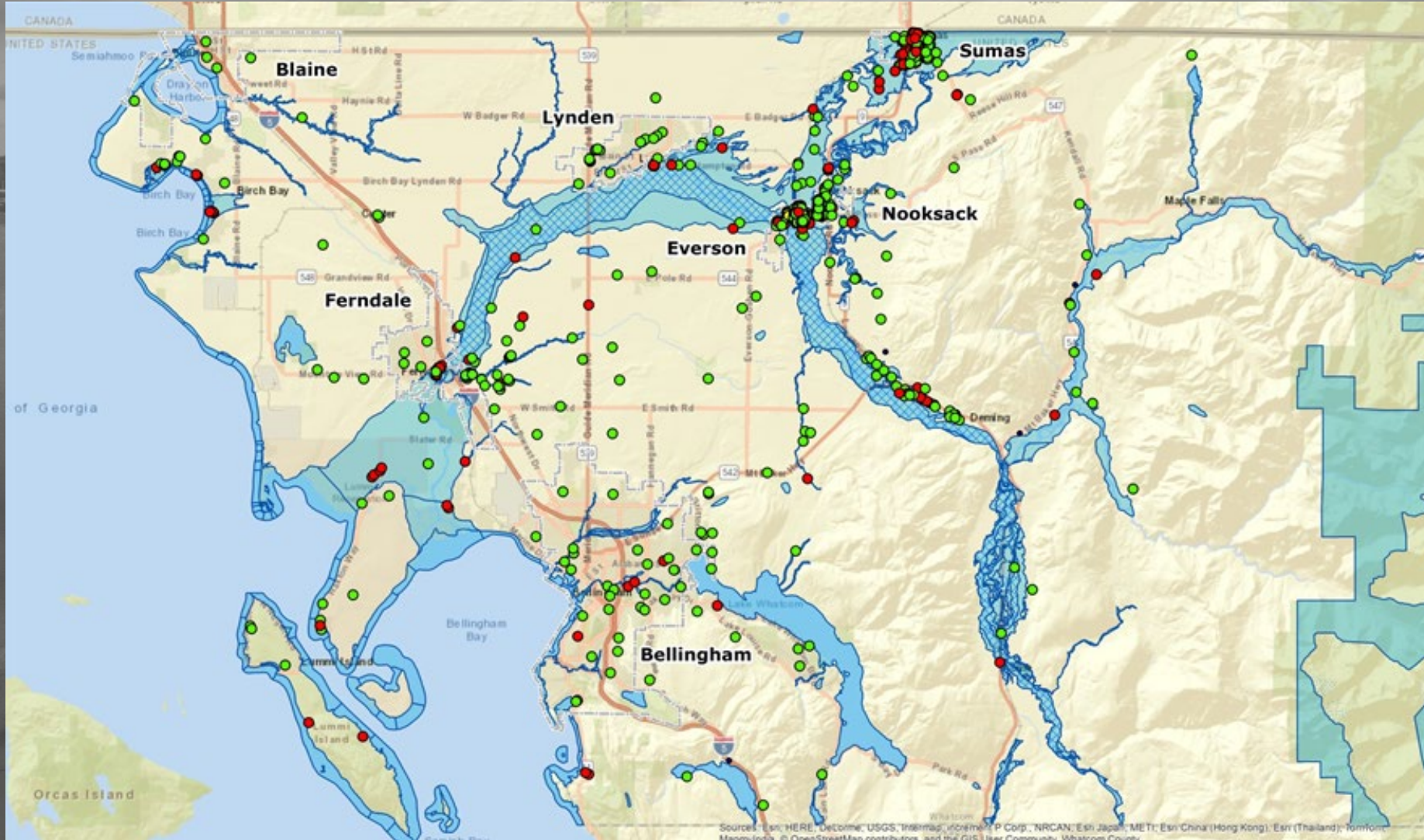
Transportation County Wide



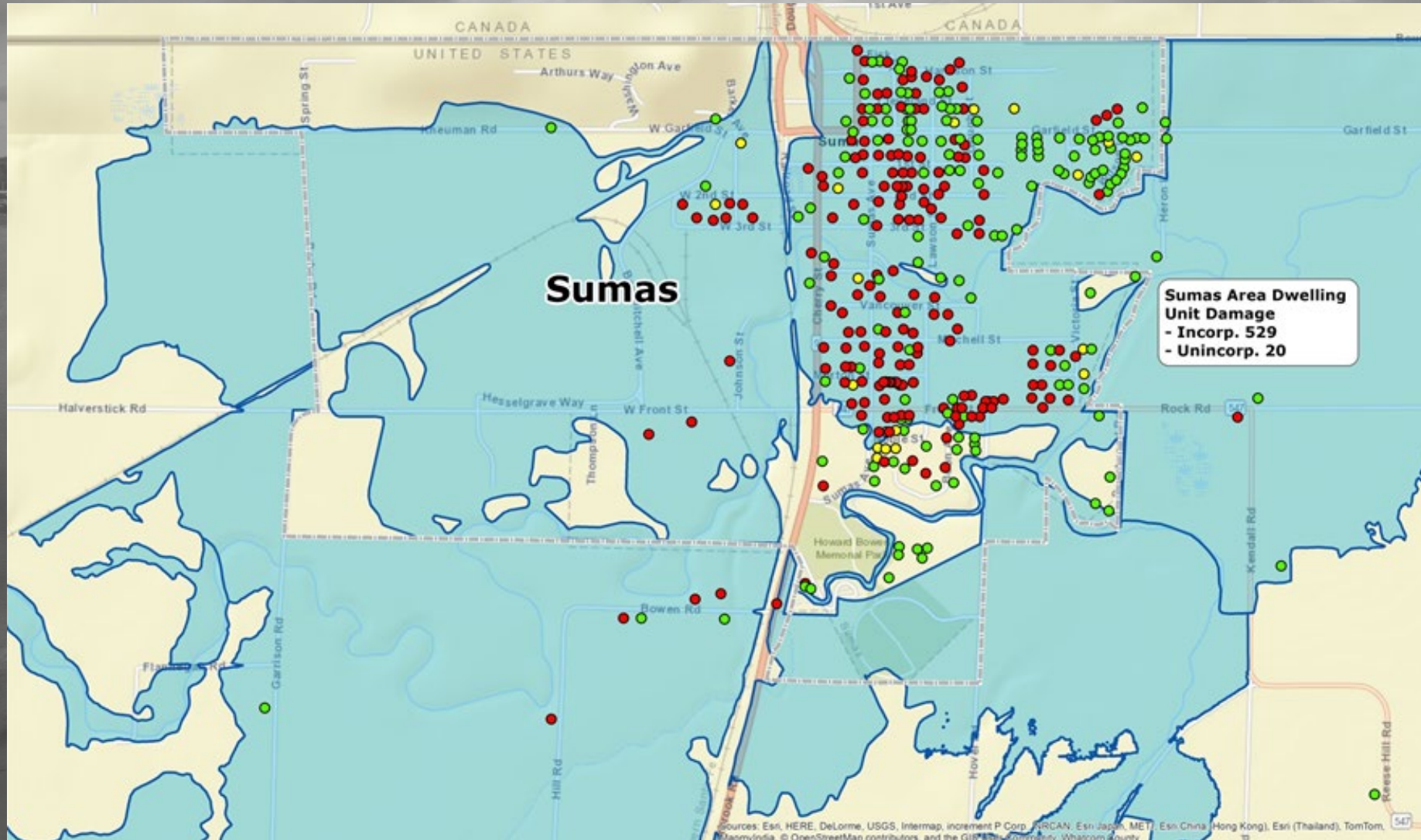
Transportation Everson, Nooksack, Sumas



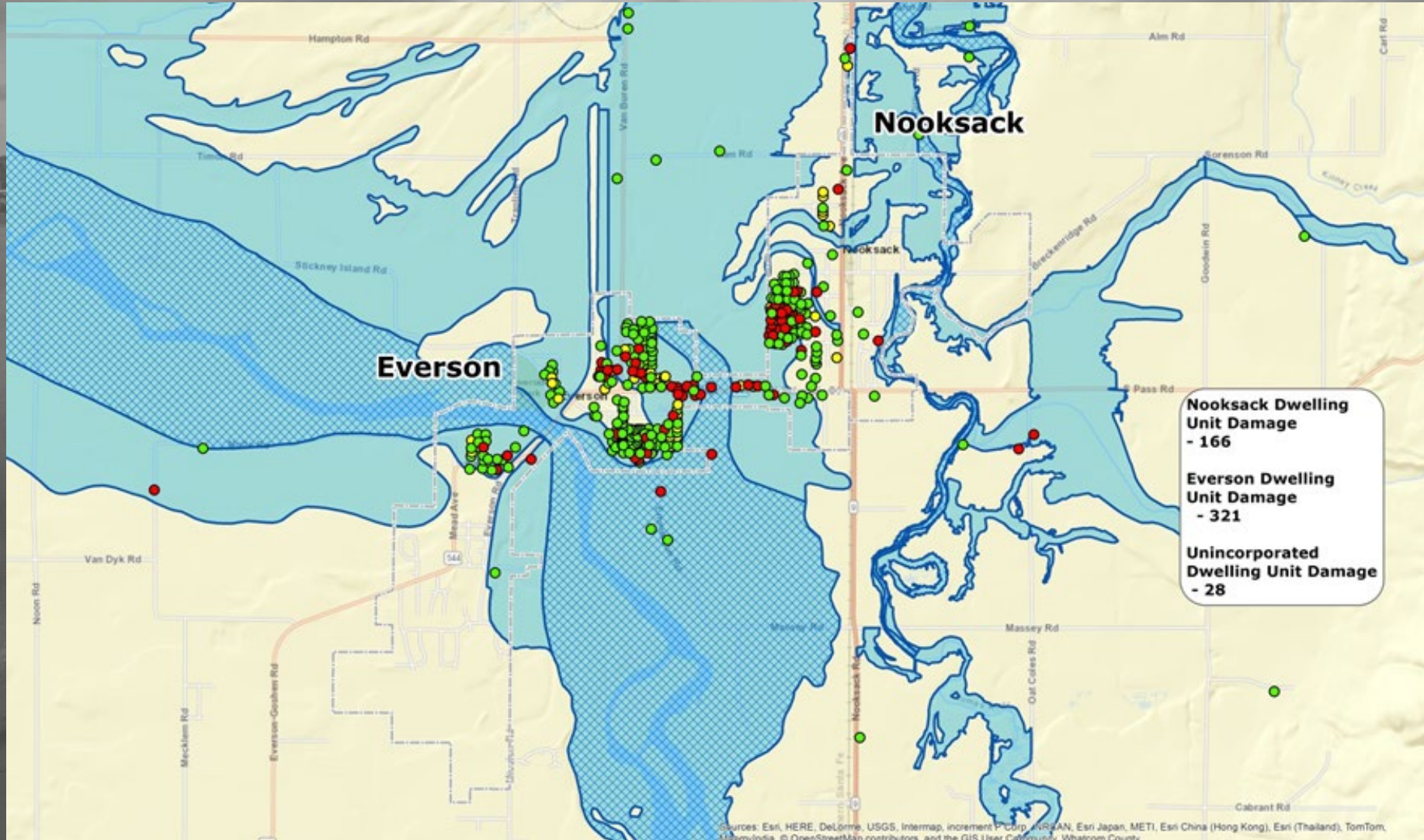
County Homes 11/23/2021



Sumas 11/23/2021



Everson 11/23/2021



Latest

- 1400-1500 homes reported damages, minor, major and destroyed. Early estimates are 12-15 Million
- Temporary housing site established at Sarbanand Farms, can house up to 200.
- Multiple landslides have occurred.
- Over 2000 volunteers
- Individual Assistance in process
- Preliminary Damage Assessment Teams December 13



Needs

- Getting People Home
- Human Services
- Infrastructure
- Levy Repair
- State Road repairs
- Emergency preparations and equipment for flooding season

