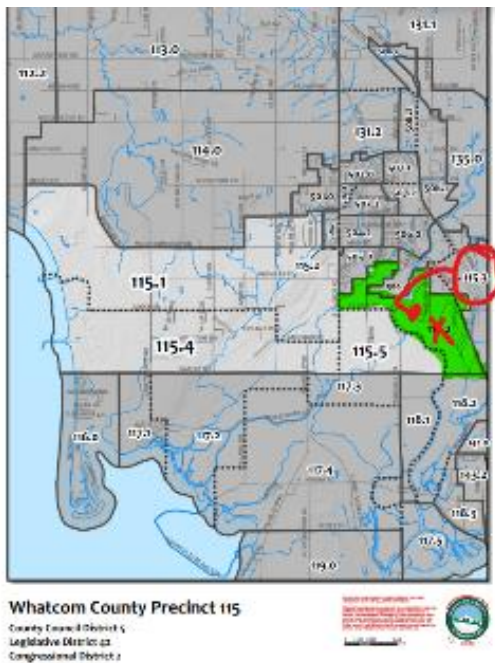


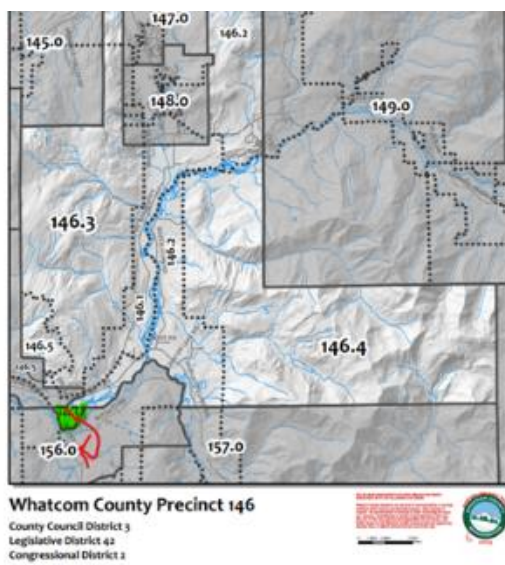
Substitute Precinct maps were generated to correct precinct portions that were incorrectly labeled.

The 21 precinct maps that had changes are as follows: 114, 115, 117, 118, 132, 135, 137, 142, 146, 152, 153, 156, 157, 201, 202, 206, 303, 504, 505, 506, & 509.

- Edits made to precinct 115. Green highlighted area was incorrectly labeled. It should read 115.3. This precinct split appeared on many other precinct maps (114, 115, 117, 118, 132, 135, 142, 504, 505, 506, 509)



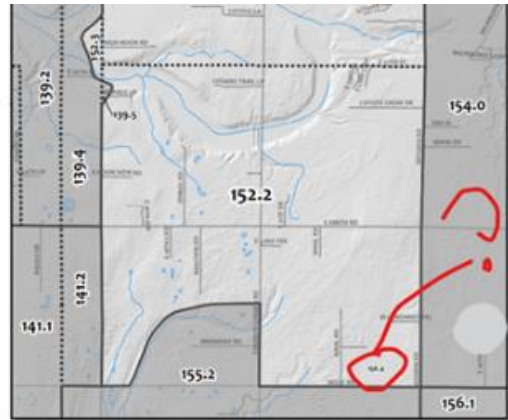
- Edits made to Precinct 146: Green highlighted area was incorrectly labeled. It should read 156.9. this precinct split incorrectly appeared on other precinct maps (146, 153, 157)



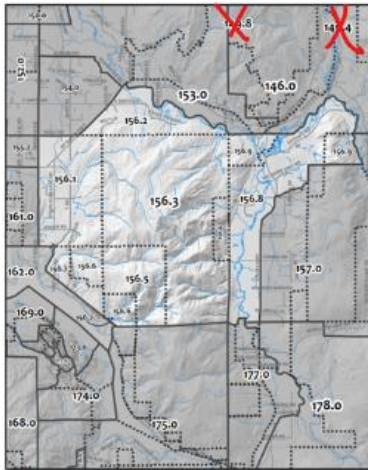
- Other precinct maps had a correction made to a precinct split label in the outlying areas (137, 152, 156, 201, 202, 206, & 303):



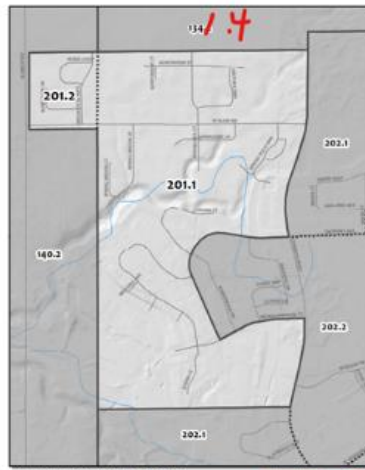
Whatcom County Precinct 137
 County Council District 4
 Legislative District 42
 Congressional District 2



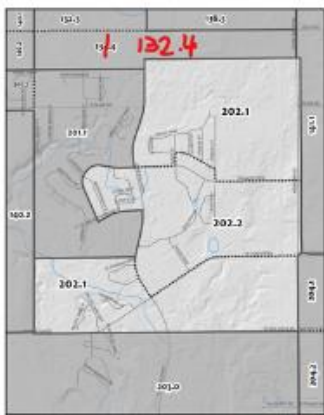
Whatcom County Precinct 152
 County Council District 3
 Legislative District 42
 Congressional District 2



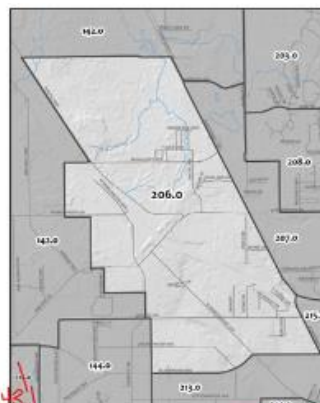
Whatcom County Precinct 156
 County Council District 3
 Legislative District 42
 Congressional District 2



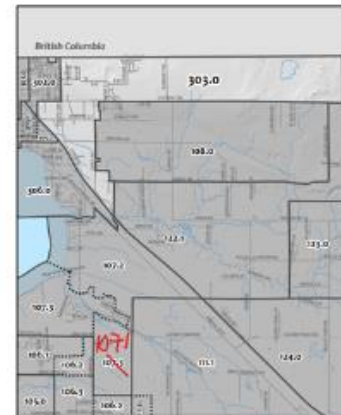
Whatcom County Precinct 201
 City of Bethlehem Ward 2
 County Council District 1
 Legislative District 42
 Congressional District 3



Whatcom County Precinct 202
 City of Bethlehem Ward 2
 County Council District 1
 Legislative District 42
 Congressional District 2



Whatcom County Precinct 206
 City of Bethlehem Ward 1
 County Council District 2
 Legislative District 42
 Congressional District 1



Whatcom County Precinct 303
 City of White Water
 County Council District 5
 Legislative District 42
 Congressional District 3