

Whatcom Conservation District



Since 1946, we have worked with landowners and farmers to foster a healthy, sustainable relationship between people and the environment.



INTERAGENCY CREP PRESENTATION - OVERVIEW

- WCD: Program Background
- WCD: History & Highlights
- FSA: Recent Determinations
- WCD: Supporting Participants
- WSCC: State-wide support
- Questions & Discussion



CONSERVATION RESERVE ENHANCEMENT PROGRAM



Partnership program:

- Farm Service Agency (FSA)
- Natural Resource Conservation Agency (NRCS)
- Washington State Conservation Commission (WSCC)
- Local Conservation Districts



**CONSERVATION DISTRICTS
OF WASHINGTON STATE**

your window to healthy lands

PROGRAM ELEMENTS



- Outreach & Education
- Technical Assistance & Planning
- Site preparation & Planting
- Maintenance for 5 years
- Annual Rental Payment (15 years)
- On-going Support

PROGRAM BENEFITS

- Moderated Temperatures
- Diversified habitat
- Attenuated flood waters
- Reduced erosion
- Weather Protection
- Sequestered Carbon
- Achieve regional priorities



PROGRAM ACCOMPLISHMENTS



487

Number of Projects

236

Miles of Buffer

1,472,021

Seedlings Planted

3,016

Acres Planted

CALIFORNIA CREEK – BEFORE CREP



CALIFORNIA CREEK – SITE PREP AND PLANTING



CALIFORNIA CREEK – AFTER 2 YEARS



CALIFORNIA CREEK – AFTER 7 YEARS



CREP- KAMM CREEK AT THE NOOKSACK RIVER

2008

2022



RECENT FARM SERVICE AGENCY DETERMINATION- OVERVIEW

Jon Wyss
State Director
Washington State Farm Service Agency

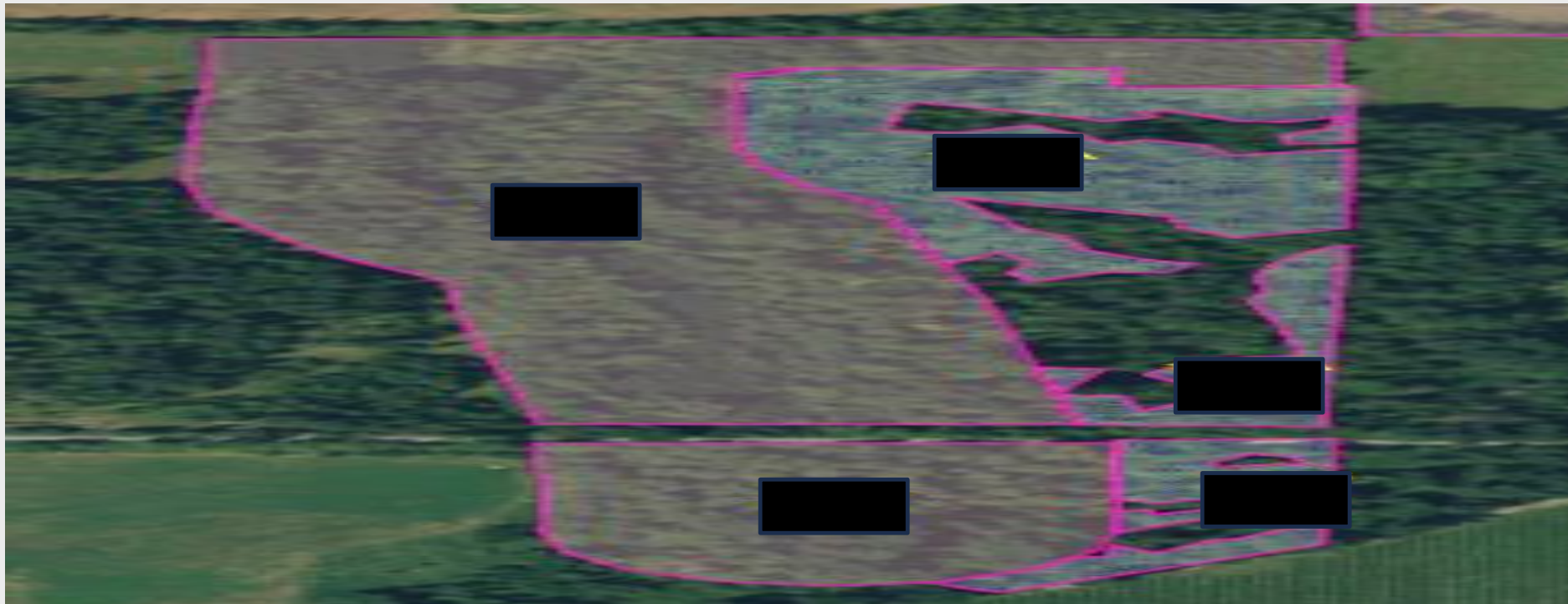


NO CREP STREAM

ONLY LAND ALONG STREAMS DESIGNATED IN ACCORDANCE WITH THE CREP AGREEMENT IS ELIGIBLE FOR ENROLLMENT IN THE CP22 (RIPARIAN BUFFER). DESIGNATED STREAM SEGMENTS ARE ELIGIBLE ONLY IF THEY ARE SHOWN ON MAPS APPROVED BY THE FSA STATE COMMITTEE AND WASHINGTON CONSERVATION COMMISSION. 2-CRP REV 5 PP 66C

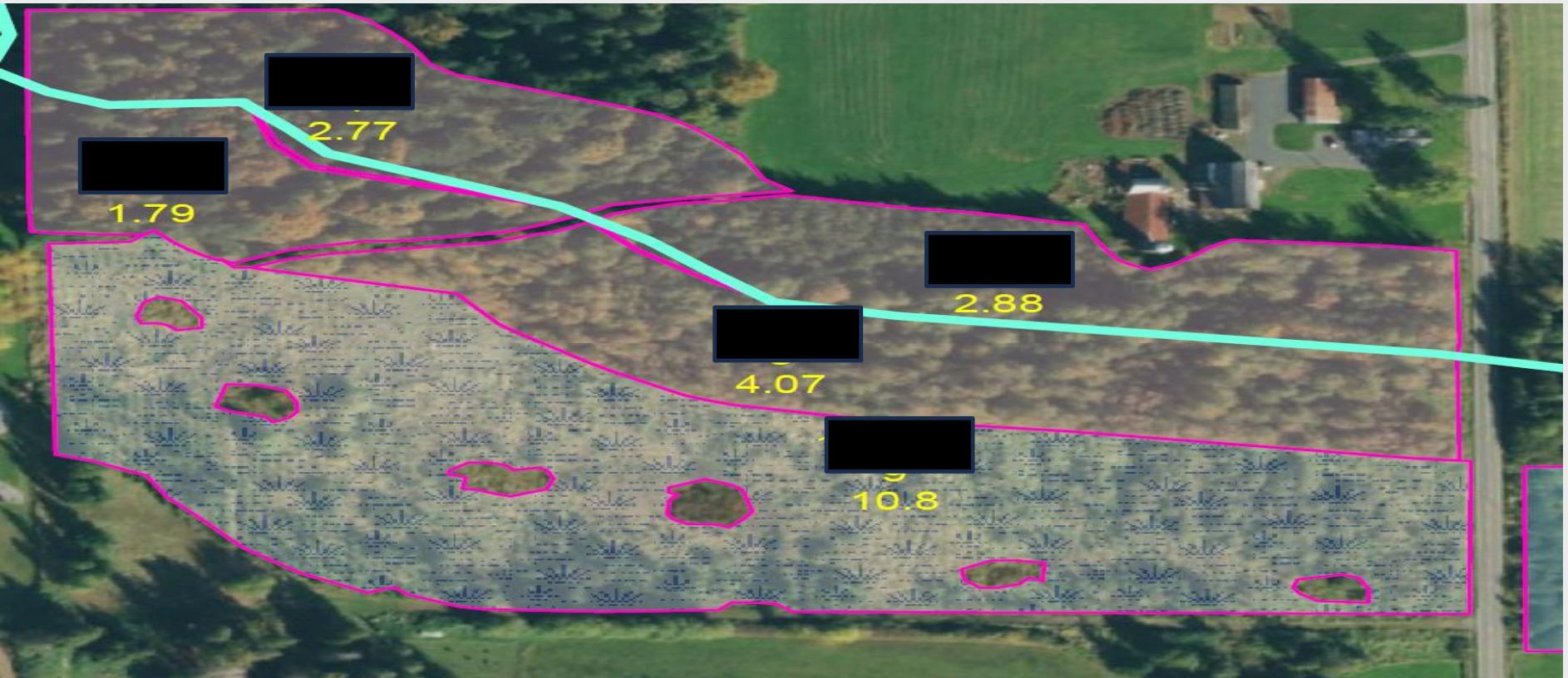
CP30: COC OR CED MUST DETERMINE WHETHER THE MARGINAL PASTURELAND OFFERED IS IMMEDIATELY ADJACENT AND PARALLEL TO THE IDENTIFIED ELIGIBLE WETLAND 2-CRP PP 181E

ONLY WETLANDS HYDROLOGICALLY CONNECTED TO DESIGNATED STREAMS ARE ELIGIBLE FOR ENROLLMENT IN ...CP30 UNDER CREP. 2-CRP WA PP66

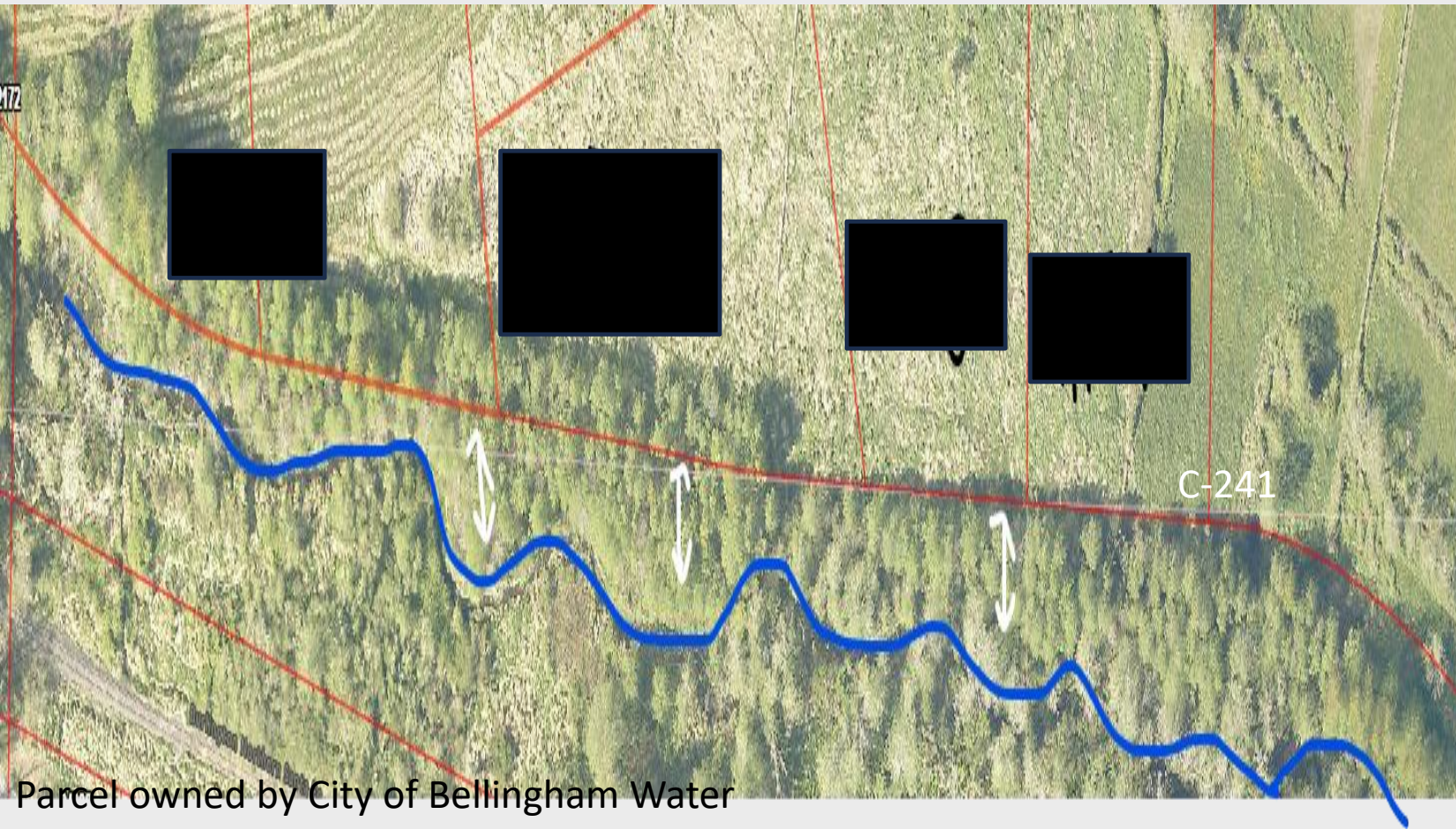


HEAVILY TREED CP30 PRACTICES

NATIONAL POLICY LIMITS CP30 ENROLLMENT TO SITES THAT ARE NOT SUITABLE FOR, OR CAPABLE OF, GROWING TREES. EXHIBIT 11 CP30 B SUBPARAGRAPH 491 C HAS BEEN AMENDED TO REMOVE PRACTICE CP30 AS A PRACTICE ELIGIBLE FOR TREE/SHRUB PROTECTORS OR ANIMAL DAMAGE CONTROL DEVICES. (NO TREES IN CP30S)



STREAM NOT ON PRODUCER'S PROPERTY



Parcel owned by City of Bellingham Water
Department

OTHER CONCERNS CONTINUED

- We buffering in the middle of a pond that is surrounded by forest, eligibility issue.



SUPPORTING PARTICIPANTS- WHATCOM CONSERVATION DISTRICT



Gabrielle Metnick, WCD

STATEWIDE SUPPORT- WASHINGTON STATE CONSERVATION COMMISSION

Alison Halpern Ph.D
Interim Policy Director
Washington State Conservation Commission



CONSERVATION DISTRICTS
OF WASHINGTON STATE

your window to healthy lands

CONTACTS:

Brandy Reed
Whatcom CD
b.reed@whatcomcd.org

Jon Wyss
Farm Service Agency
jon.wyss2@usda.gov

Alison Helpert
WA Conservation Commission
ahalpern@scc.wa.gov

