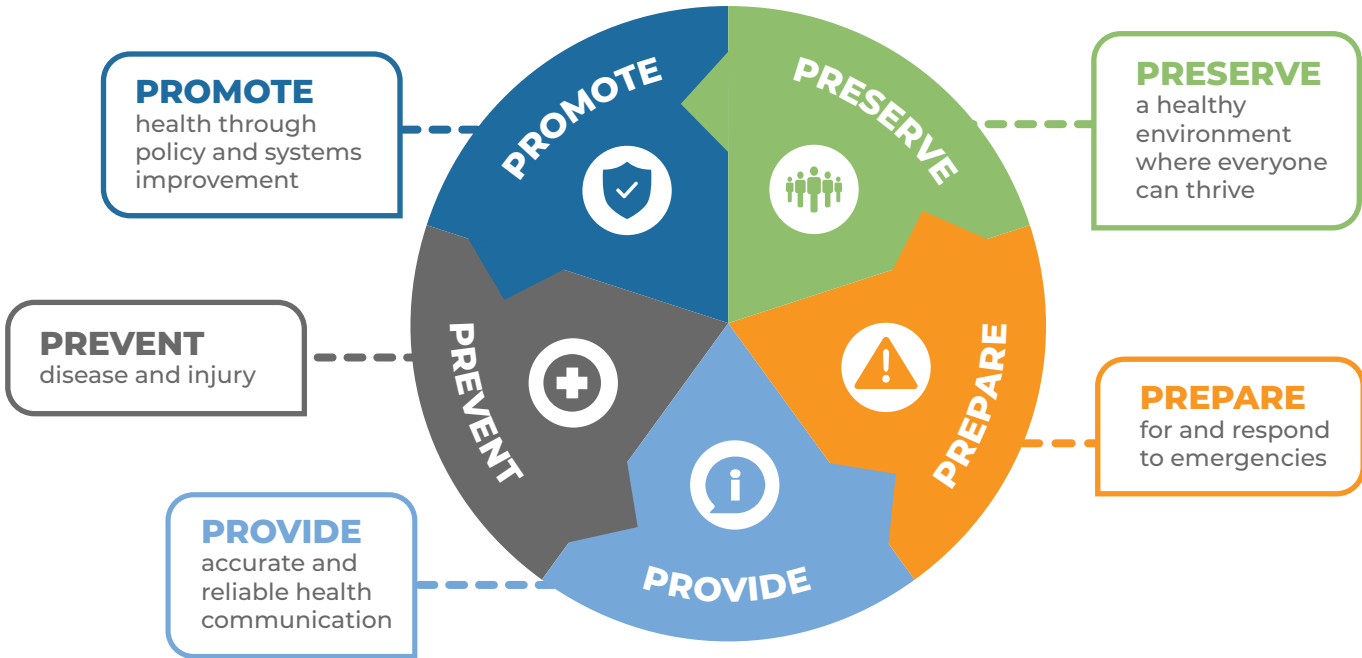


**OUR PURPOSE:** We serve Whatcom County by  
**ADVANCING EQUITY** & **PARTNERING WITH OUR COMMUNITY** to:



## OUR STRATEGIC PRIORITIES:

These four strategic priorities will strengthen Whatcom County Health Department's capacity to fulfill its purpose and positively impact Whatcom County's community health programs, services and systems.

<p><b>Community Partnerships &amp; Engagement</b></p> <p>Partner collaboratively to find community-based solutions that advance health and health equity.</p>	<p><b>Organizational Infrastructure</b></p> <p>Effectively manage finances, resources, and staffing to support a culture of ethical practice, decision-making and governance.</p>	<p><b>Workforce Development</b></p> <p>Build and support a diverse, skilled health and human services workforce while ensuring an organizational culture and work environment that is supportive of staff.</p>	<p><b>Quality Management</b></p> <p>Use program data to drive decision-making, inform ongoing improvements and foster a culture of transparency and accountability.</p>
---	---	--	---

## OUR VALUES:

**Equity • Collaboration • Compassion • Transparency • Innovation • Service**