

Lighthouse Marine Park Boat Ramp Update 2019





Lighthouse Marine Park Regional Map





Lighthouse Marine Park



Point Roberts, Washington





Boat Launch

Park Office

Campground

Day Use &
Boat Trailer Parking

Boardwalk / Restroom
Orca Interpretive Center

Playground

Group Camping Area

US Coast Guard
Property

Shoreline Trail



NORTH



Lighthouse Marine Park

Existing Facilities



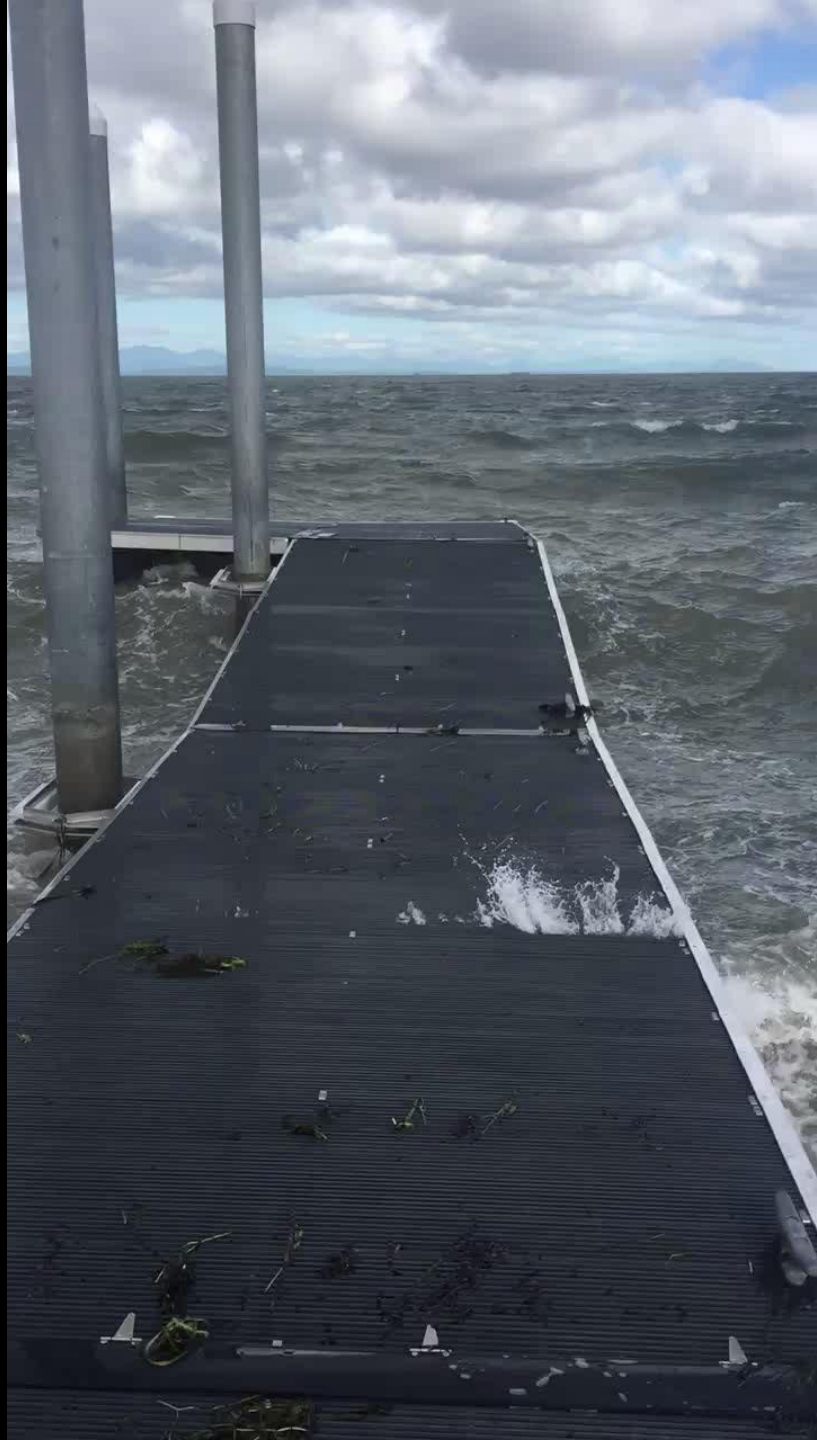
Site Conditions

Strait of Georgia Statistics



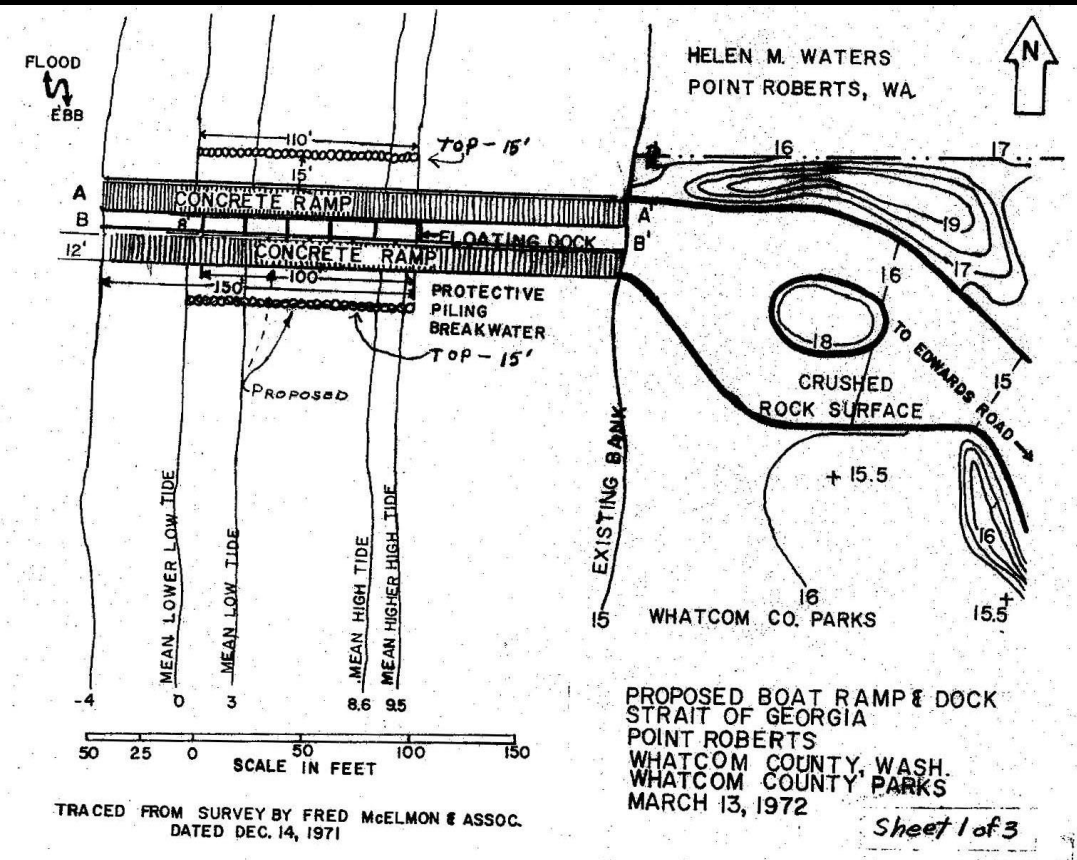
- 135 Miles long
- 20 Miles wide
- Covers more than 2,600 square miles
- Regularly experiences rough wind & wave conditions





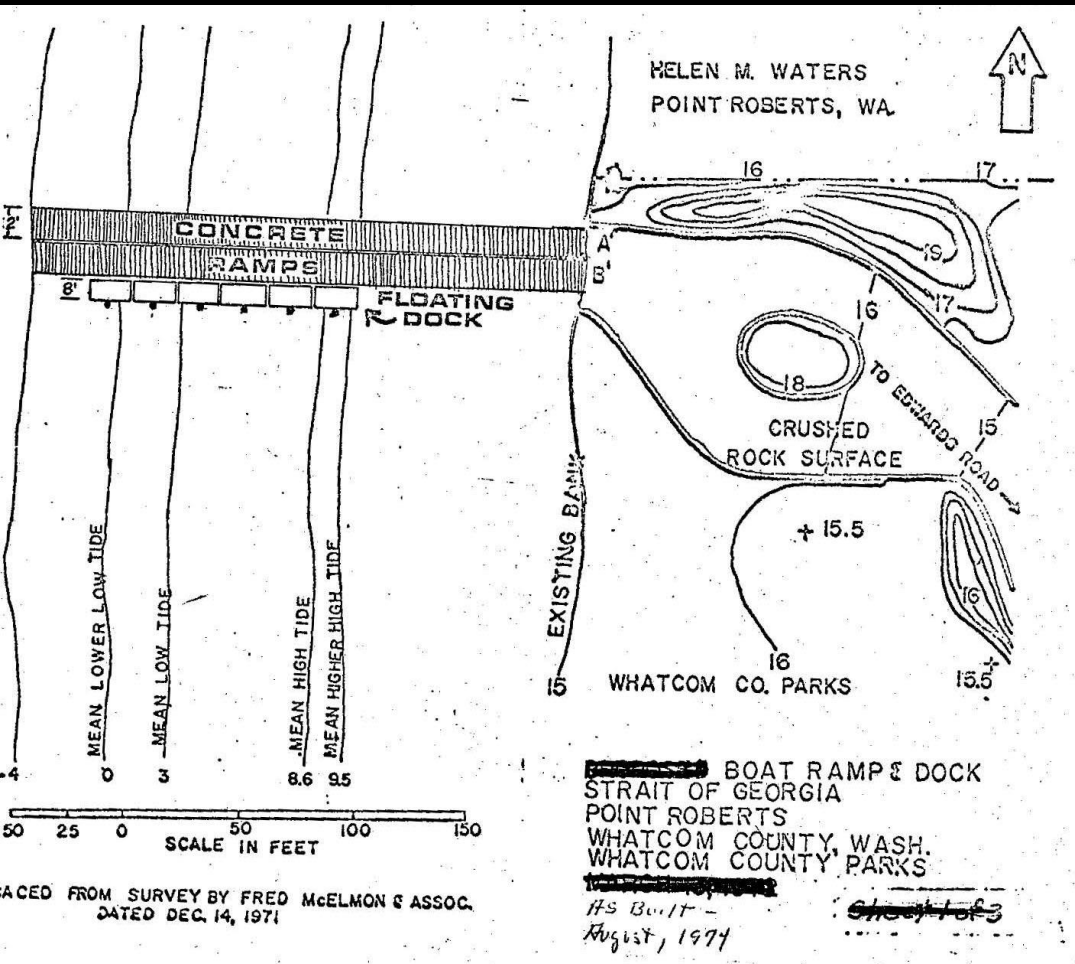
Project Background

- Original Proposal (1972)
 - Concrete Ramps
 - Boarding Float
 - North & South Pile Breakwater Structures



Project Background

- Installation (1974)
 - Concrete Ramp
 - Boarding Float
 - Eliminated Breakwater Structures
- Repair History
 - 1992 Float & Pile Replacement



Project Background



- 2012-2015 Design, Engineering, permitting & Construction
- Regulatory Requirements
 - Limited grounding area (no more than 20% of total)
 - Light penetration (60% light penetration through dock)
- Installation
 - Weight of dock limited to park equipment lifting capacity



Seasonal Launch

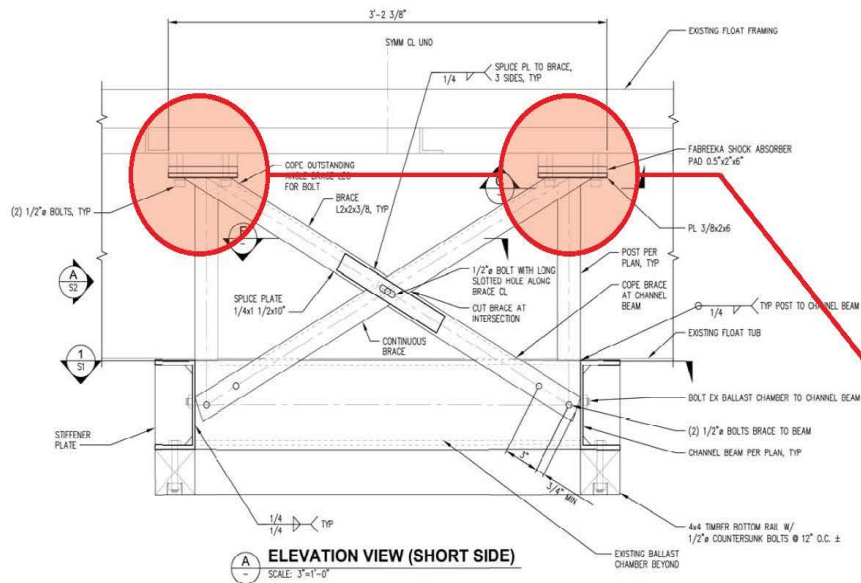
- May – September Season
- Installation & Maintenance Effort
- Lower use
 - Changes in Fishing Regulations
 - USA-CAN Border Crossing Complications
- Alternative Launch Sites

LIGHTHOUSE MARINE PARK BOARDING FLOAT



BOARDING FLOAT DAMAGE 6/29/2018

BOARDING FLOAT RE-INSTALLED 8/4/2016



GROUNDING FRAME REDESIGN
1/02/2016 - 5/10/2016

GROUNDING FRAME INSTALLATION
6/28/2016 - 7/29/2018

Options

- Option 1 – Council can authorize additional funding (\$50,000) and repair the boarding platform for the 2019 season.
- Option 2 – Boarding float can be removed from the launch, repurposed in a different park location. Maintain concrete launch for public use.

Questions?

