

WCHCS Smoke and Heat Response Update

Ann Beck

7/9/24

Public Works and Health Committee

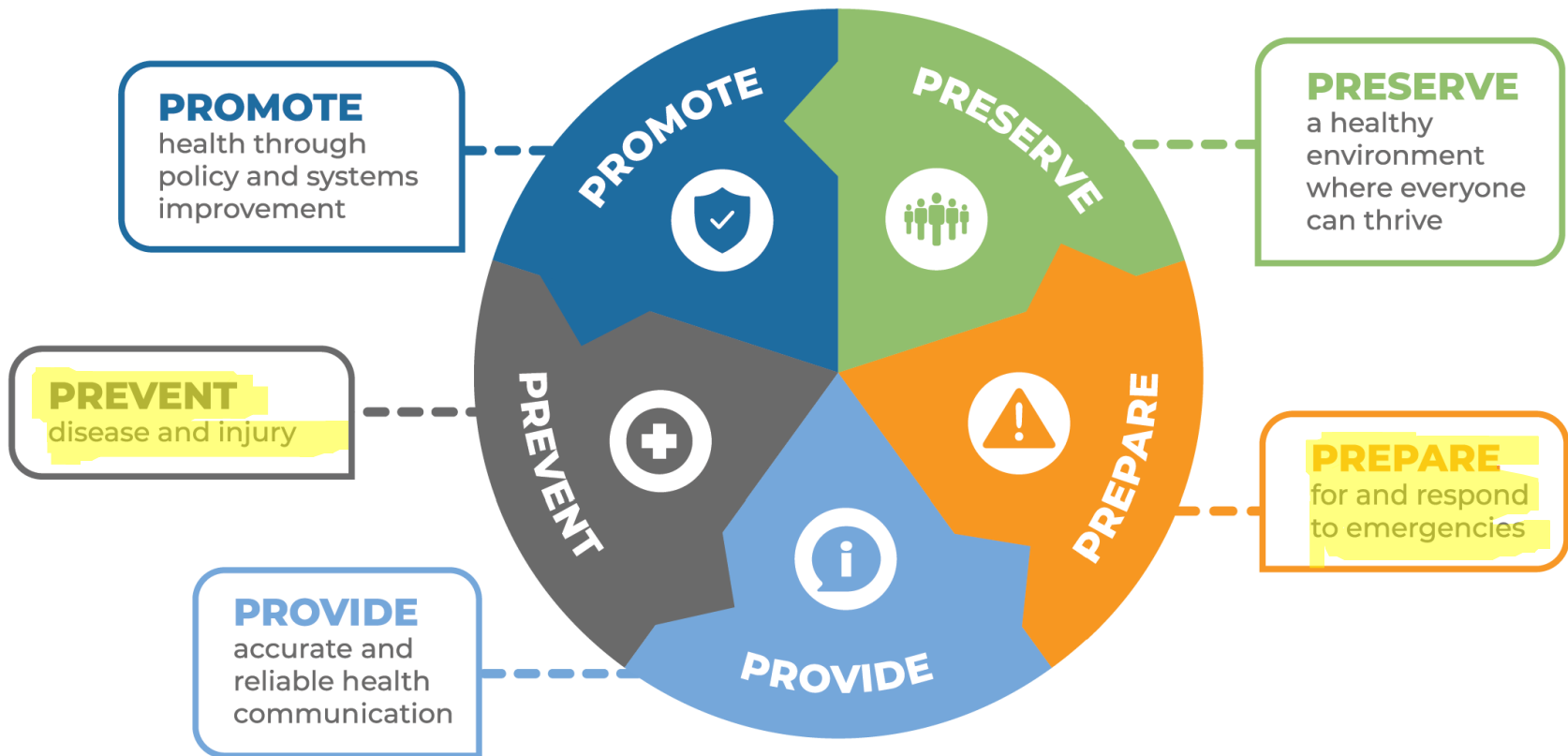


WHATCOM COUNTY
**HEALTH AND
COMMUNITY
SERVICES**



OUR PURPOSE:

We serve Whatcom County by
ADVANCING EQUITY & **PARTNERING WITH OUR COMMUNITY** to:



Current Capacity for Smoke Response



Information Sharing

- Information found on [Wildfire Smoke webpage](#) for summer 2024.
- Regular monitoring of situation and sharing of info with the community
- All WCHCS staff will have resource list to share with public
- Using state information and messaging, we adapted for local use in Whatcom.
- Flyers for DIY fan filter and Heat & Wildfire Smoke safety translated into multiple languages and shared with partners (English, Spanish, Punjabi, Russian and Ukrainian)

Current Capacity for Smoke Response



Direct Services Provided

- Information found on [Wildfire Smoke webpage](#) for summer 2024.
- Filter Fans Distributed through partners -EWRRC, North Fork Library, Deming Library, Sumas Library, Everson Library, Lynden Food Bank and Lummi Nation
- N95 Mask Distribution-Ferndale Community Services Outreach team, Homeless Outreach Team
- Allotted funding to contracted housing partners to enhance wildfire smoke protection

Current Capacity for Heat Response



Information Sharing

- Information found on [Hot Weather Safety](#) for summer 2024.
- Washington 211 has created an [interactive map](#) of cooling centers
- All City of Bellingham funded programs have contract requirement for documented heat/smoke plan for residents
- WCHCS Resource Sheet of information
- Flyers translated into multiple languages for heat safety
- Share out of all National Weather Service Excessive Heat information

Current Capacity for Heat Response



Direct Services Provided

- Information found on [Hot Weather Safety](#) for summer 2024.
- Heat mitigation for homes without air conditioning (mylar sheets etc.)
- Working with our DEM colleagues to acquire supplies for misting/shade opportunities
- Work with known providers who are supporting some of the most vulnerable folks (See next slide for chart)

Current Capacity for Heat Response



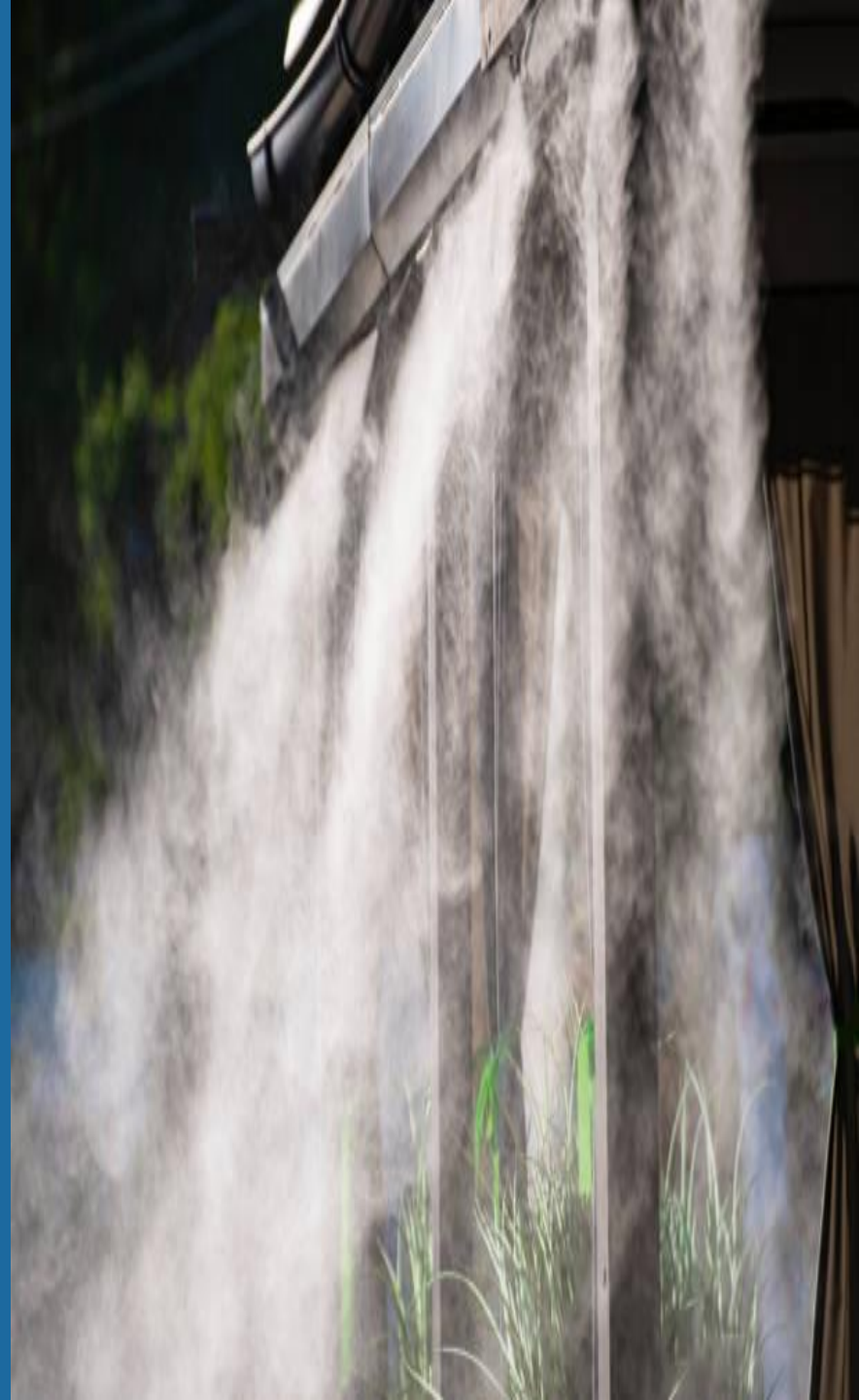
Direct Services Provided

Community Partner	Resource(s) Available or Unavailable
Ferndale Community Services Outreach Team	Water, ice, ice packs, chilled portable showers, and water exchange
Ferndale Community Resource Center	Cooling during operational hours
Lynden Community/Senior Center	Cooling during operational hours
Whatcom County Library System	Cooling during operational hours https://www.wcls.org/ to verify locations and hours
City of Bellingham	Limited supply of filter fans
East Whatcom County Regional Resource Center	Cooling during open hours
Opportunity Council HOT	Water, sunscreen, electrolyte packets

■ Roles

- WCHCS works with DEM to source supplies and amplify voice
- WCHCS PIO keeps information up to date on all webpages
- Housing Programs confirm funding meets outreach needs for contractors
- WCHCS works with appropriate partners for additional options (misting stations, large tent)

Caption (if needed)





Questions

WHATCOM COUNTY
**HEALTH AND
COMMUNITY
SERVICES**