

Whatcom County Pollution Identification and Correction (PIC) Program Funding Update

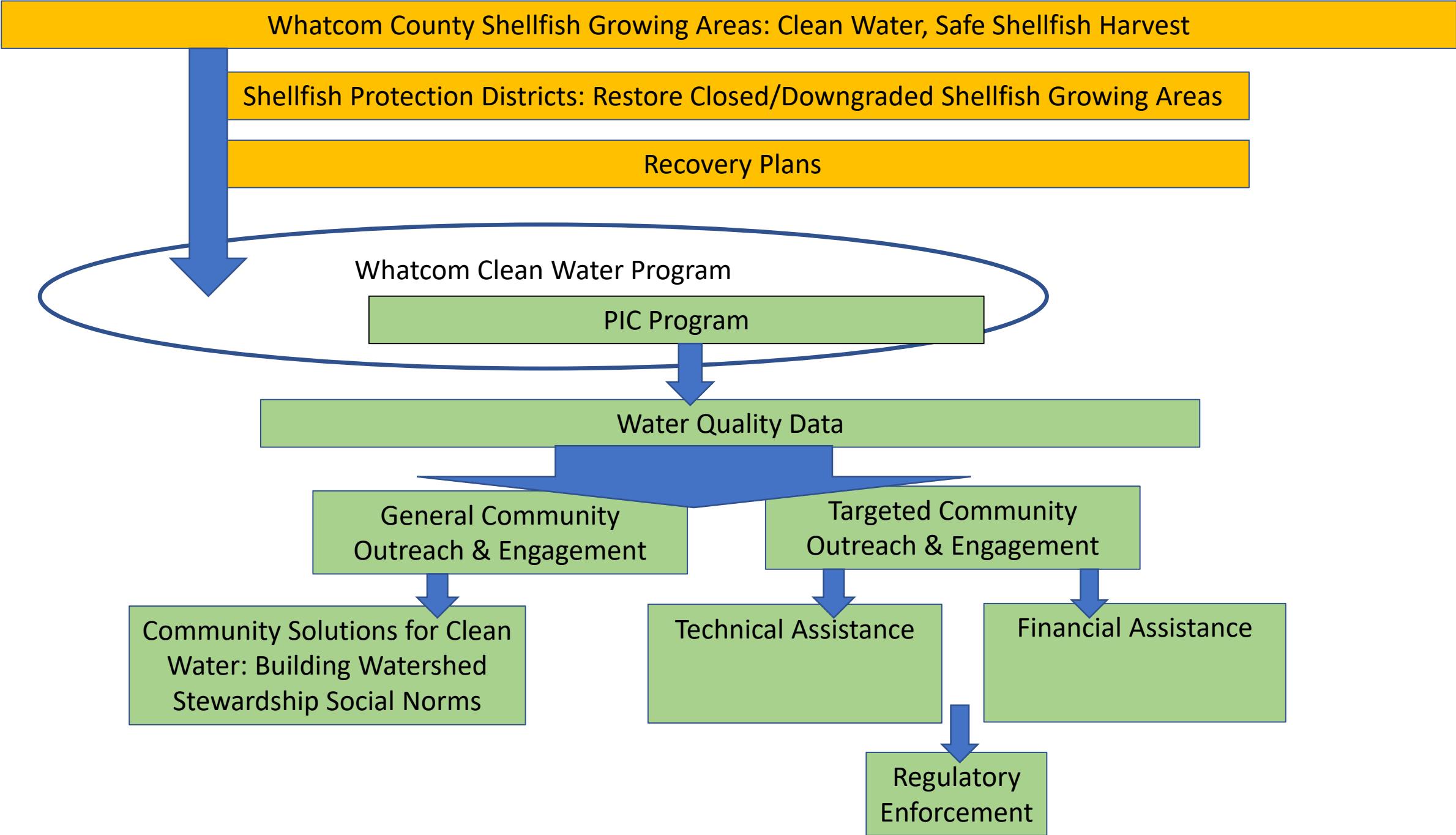
Whatcom County Council Climate Action and
Natural Resources Committee

July 11, 2023

PIC Program Purpose

- Identify sources of fecal bacteria pollution in shellfish growing areas
- Address or “correct” those sources
- Improve water quality to allow safe shellfish harvest in our community





PIC Program Funding

- Local
 - \$500,000+/year
 - Flood Fund (Public Works) and General Fund (Health)
 - 2+ FTE Whatcom County Public Works
 - Monitoring costs
 - Septic System Operations & Maintenance Program (Health)
- EPA National Estuary Program (NEP) Funding
 - Washington State Department of Health Shellfish Strategic Initiative grant
 - 2014, 2017, 2019, 2023
- ~50/50 local/federal funding

2023 Puget Sound National Estuary Program Grant

- \$1,478,944 total
- ~\$740,000/year
- 4.75 FTE

Adapt the successful Whatcom County Pollution Identification and Correction (PIC) Program to address fecal bacteria sources during critical environmental conditions and in hot spots still impacting areas with tribal, commercial, or recreational shellfish harvest closures or declining water quality.



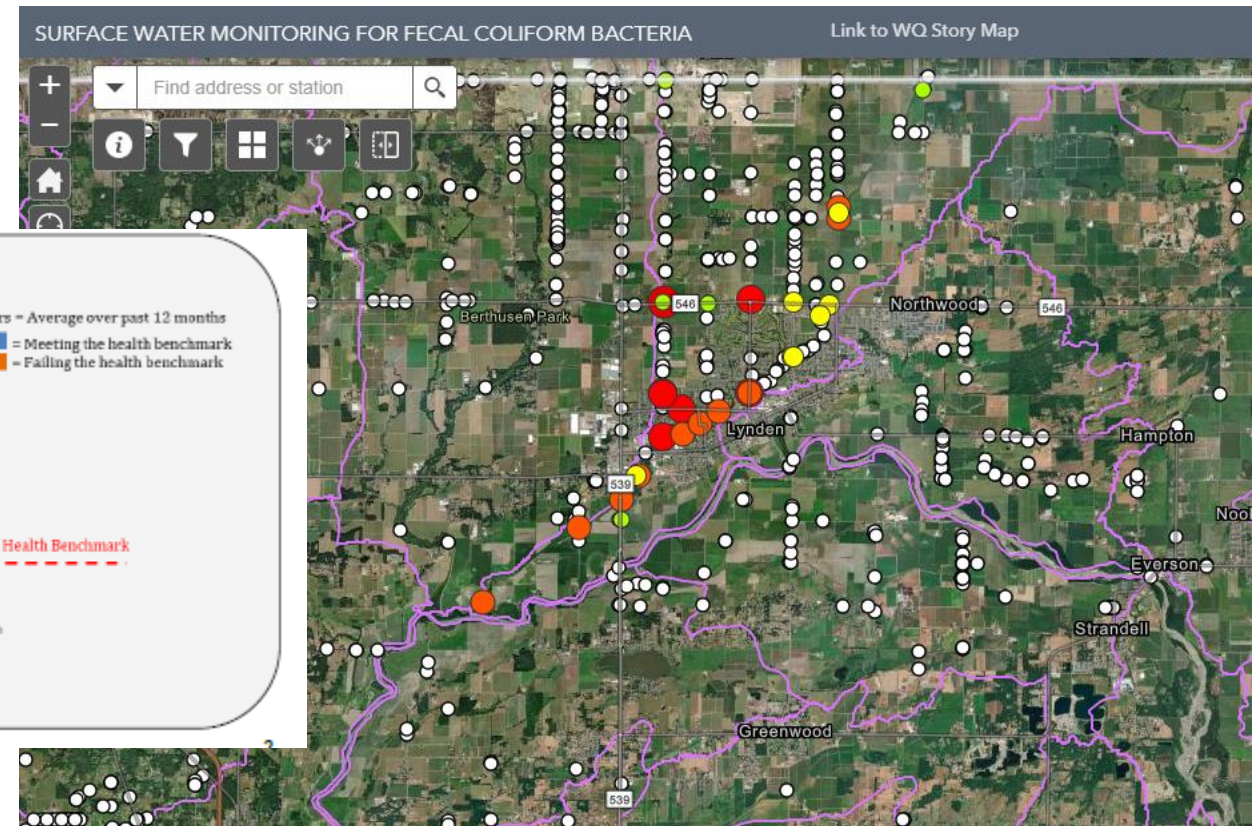
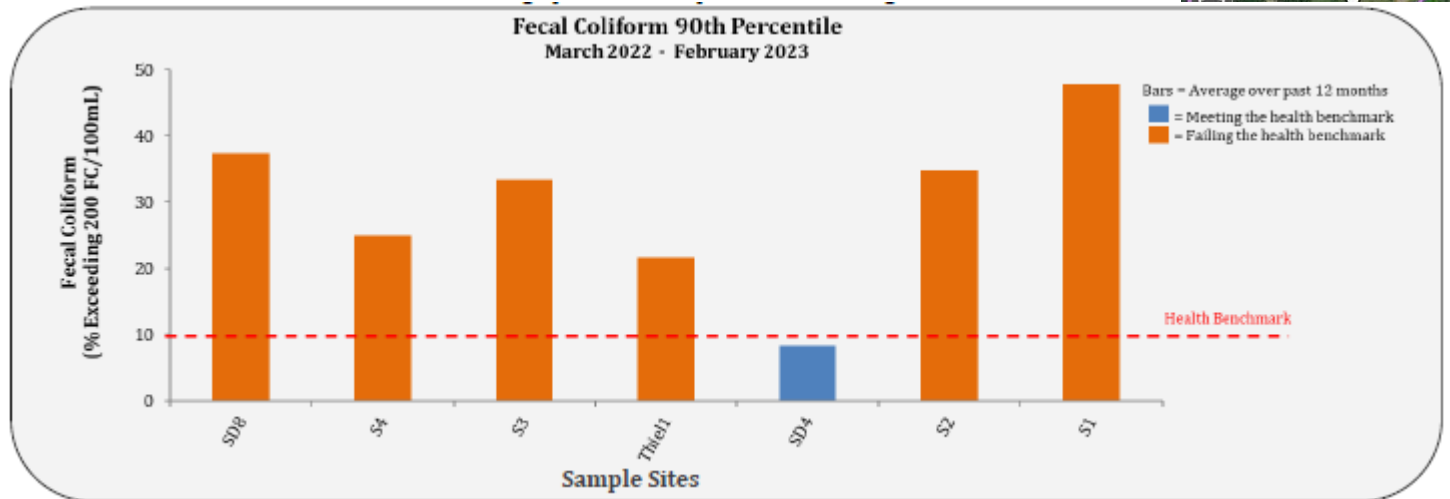
Washington State Department of
Health

PUGET SOUND
National Estuary Program



Water Quality Data Coordination

- 0.75 FTE Data Coordinator (WCD)
- Data visualization improvements
- Data management
- Seasonal strategies



Community Outreach & Engagement

- 1.0 FTE Outreach Program Specialist (WCPW)
- Cultural diversity campaign
- Incentives/Workshops/Events/Advertising/Mailers
- Seasonal strategies



Landowner Engagement

- 1.0 FTE Critical Areas Planner (WCPDS)
- 2.0 FTE Farm Planner (WCD)
- Outreach/Letters
- Technical assistance/Farm Plans
- Incentives/Rebates (small farm & septic system)
- CAO monitoring & enforcement
- Seasonal strategies



Grant-Funded Agreements/Contracts

- Whatcom Conservation District Subrecipient Agreement
 - \$773,332
 - July/August
- Professional Services Contracts
 - Water quality data visualization improvements
 - Cultural inclusivity outreach assistance

Questions?