





PLN2025-00001 - Arnie Properties LP

-  Subject Parcel
-  Existing Zoning

 Urban Growth Area Reserve

Zoning Designations

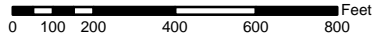
Comprehensive Plan

-  Rural
-  Urban Growth Area

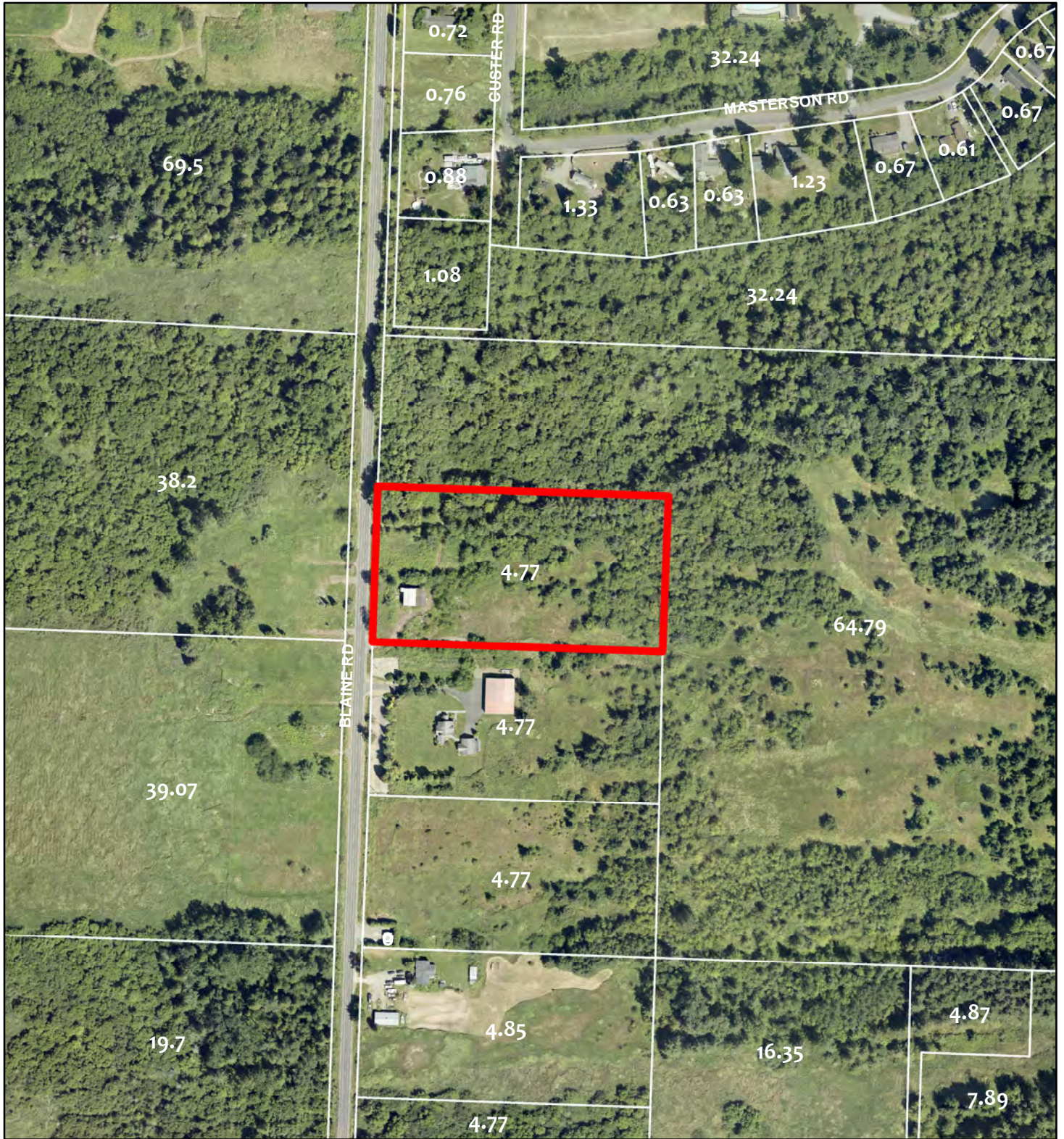
- R5A - Rural 1 DU/5 Acres
- R10A - Rural 1 DU/10 Acres
- UR4 - Urban Res. 4 DU/Acre
- URM6 - Urban Res. Med. Density 6 DU/Acre
- GC - General Commercial

USE OF WHATCOM COUNTY'S GIS DATA IMPLIES THE USER'S AGREEMENT WITH THE FOLLOWING STATEMENT:


Whatcom County disclaims any warranty of merchantability or warranty of fitness of this map for any particular purpose, either express or implied. No representation or warranty is made concerning the accuracy, currency, completeness or quality of data depicted on this map. Any user of this map assumes all responsibility for use thereof, and further agrees to hold Whatcom County harmless from and against any damage, loss, or liability arising from any use of this map.



Surrounding Parcels

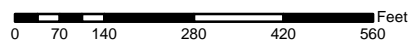


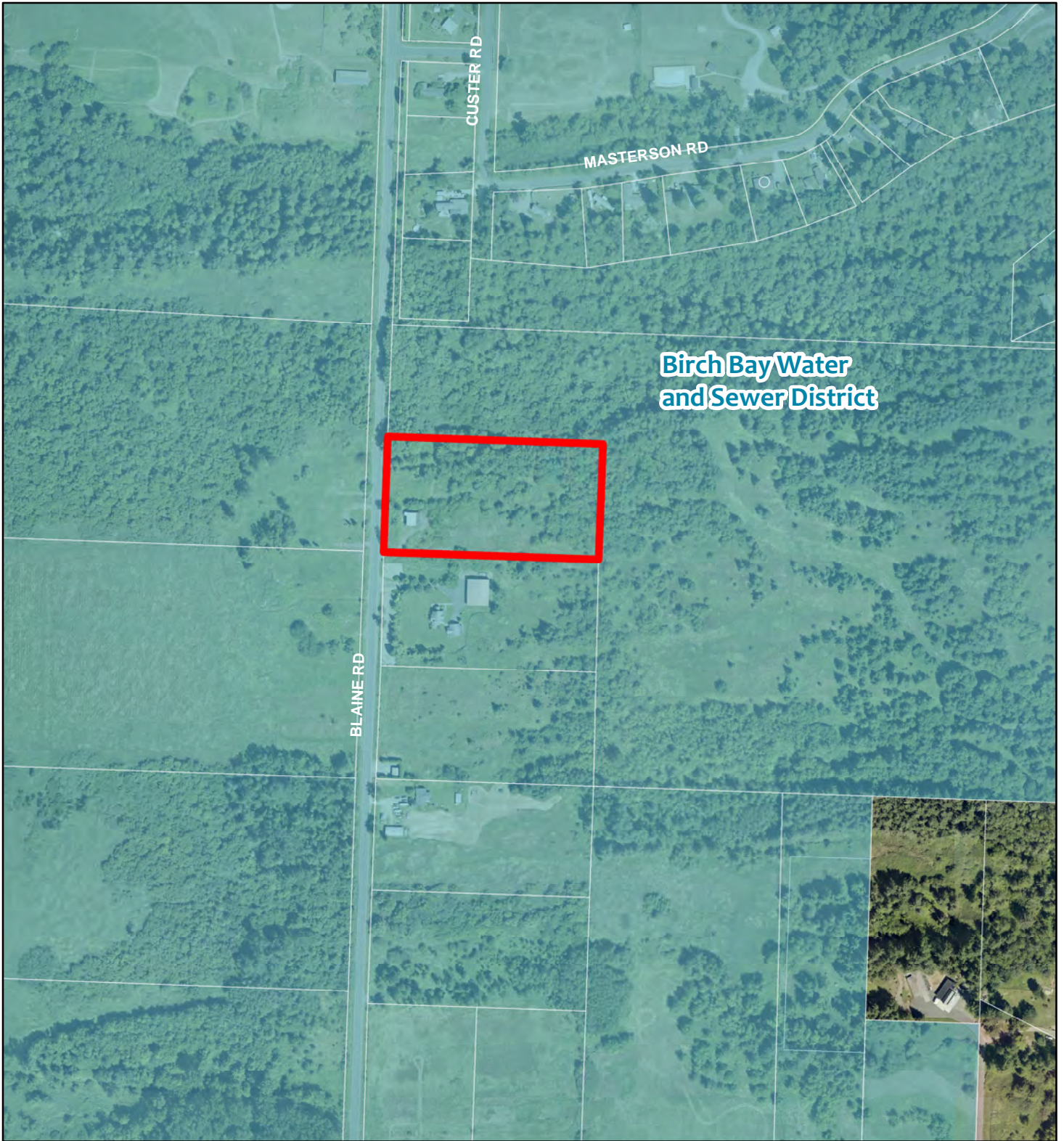
PLN2025-00001 - Arnie Properties LP

 Subject Parcel

USE OF WHATCOM COUNTY'S GIS DATA IMPLIES THE USER'S AGREEMENT WITH THE FOLLOWING STATEMENT:

Whatcom County disclaims any warranty of merchantability or warranty of fitness of this map for any particular purpose, either express or implied. No representation or warranty is made concerning the accuracy, currency, completeness or quality of data depicted on this map. Any user of this map assumes all responsibility for use thereof, and further agrees to hold Whatcom County harmless from and against any damage, loss, or liability arising from any use of this map.





PLN2025-00001 - Arnie Properties LP



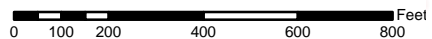
Subject Parcel



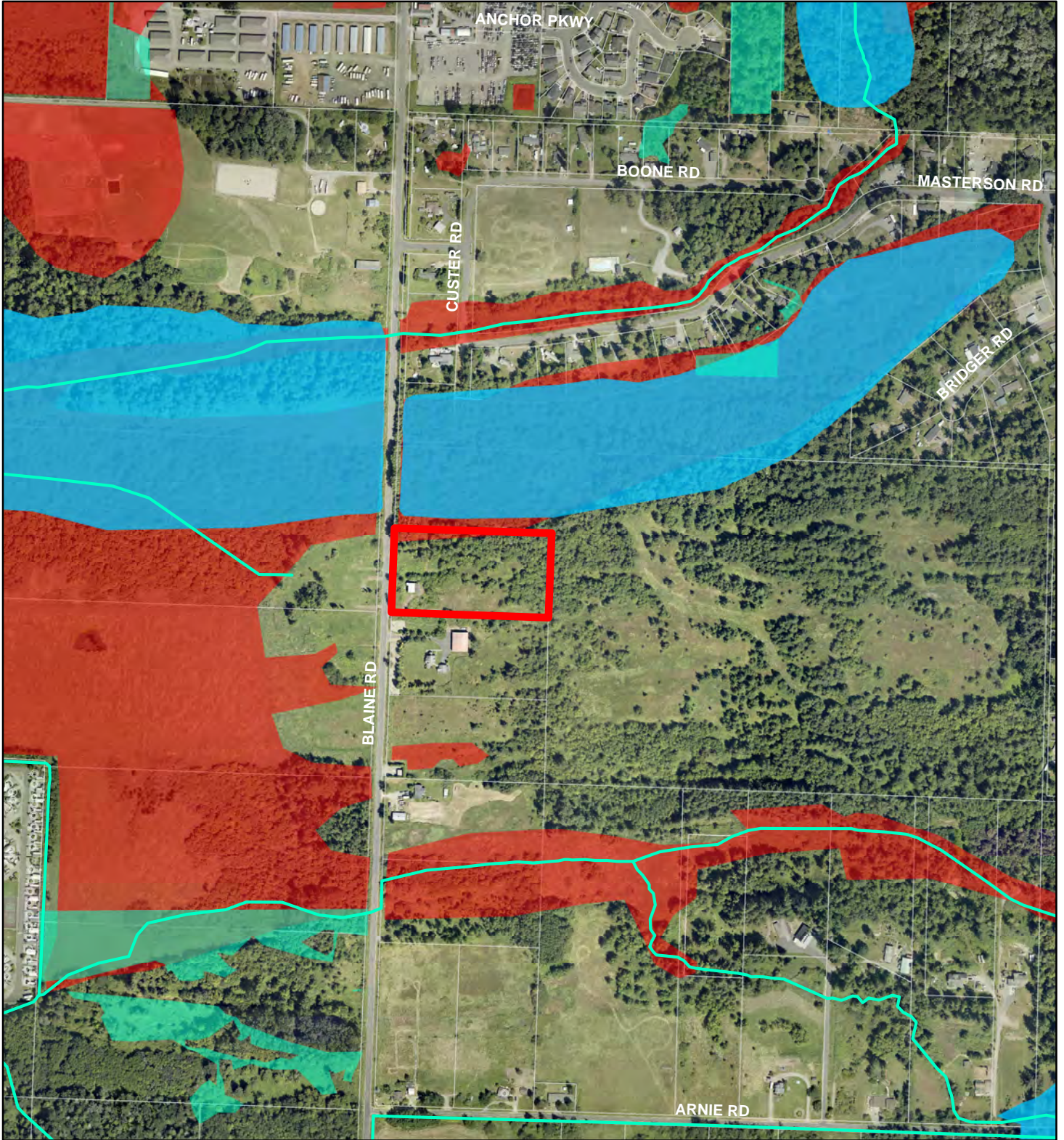
Birch Bay Water & Sewer District

USE OF WHATCOM COUNTY'S GIS DATA IMPLIES THE USER'S AGREEMENT WITH THE FOLLOWING STATEMENT:


Whatcom County disclaims any warranty of merchantability or warranty of fitness of this map for any particular purpose, either express or implied. No representation or warranty is made concerning the accuracy, currency, completeness or quality of data depicted on this map. Any user of this map assumes all responsibility for use thereof, and further agrees to hold Whatcom County harmless from and against any damage, loss, or liability arising from any use of this map.



Wellhead Protection Areas, Wetlands, Streams



PLN2025-00001 - Arnie Properties LP

 Subject Parcel

Wellhead Protection Areas

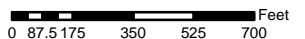
None in vicinity

Wetlands

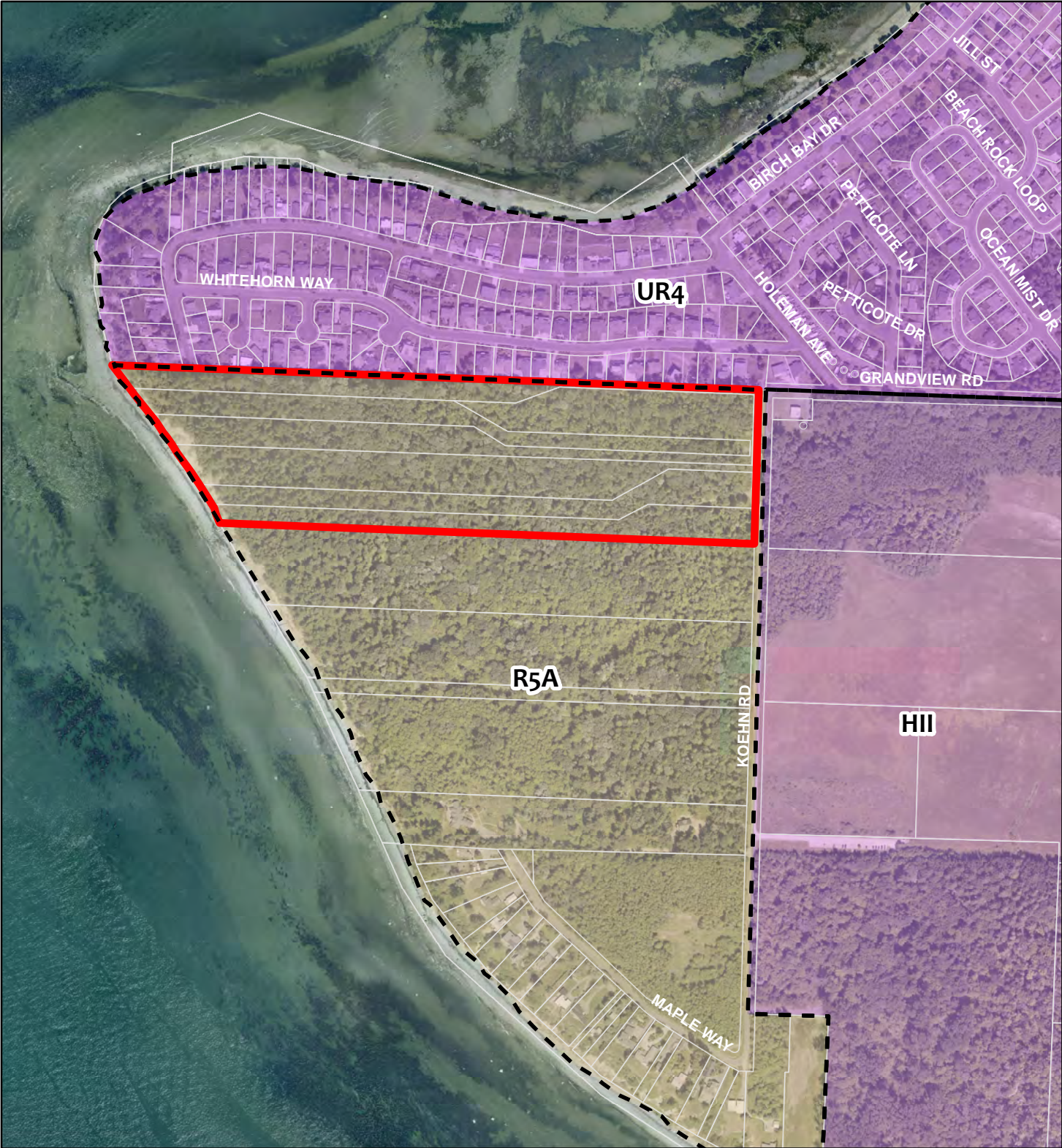
-  Project Wetlands
-  PHS Wetlands
-  Birch Bay (Birch Bay Watershed Characterization



USE OF WHATCOM COUNTY'S GIS DATA IMPLIES THE USER'S AGREEMENT WITH THE FOLLOWING STATEMENT:
 Whatcom County disclaims any warranty of merchantability or warranty of fitness of this map for any particular purpose, either express or implied. No representation or warranty is made concerning the accuracy, currency, completeness or quality of data depicted on this map. Any user of this map assumes all responsibility for use thereof, and further agrees to hold Whatcom County harmless from and against any damage, loss, or liability arising from any use of this map.



& Watershed Planning Pilot Study 2007)



PLN2025-00002 - Calluna Properties LLP

Subject Parcels

Existing Zoning

Comprehensive Plan

Rural

Urban Growth Area

Zoning Designations

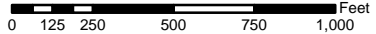
R5A - Rural 1 DU/5 Acres

UR4 - Urban Res. 4 DU/Acre

HII - Heavy Impact Industrial

USE OF WHATCOM COUNTY'S GIS DATA IMPLIES THE USER'S AGREEMENT WITH THE FOLLOWING STATEMENT:


Whatcom County disclaims any warranty of merchantability or warranty of fitness of this map for any particular purpose, either express or implied. No representation or warranty is made concerning the accuracy, currency, completeness or quality of data depicted on this map. Any user of this map assumes all responsibility for use thereof, and further agrees to hold Whatcom County harmless from and against any damage, loss, or liability arising from any use of this map.



Surrounding Parcels

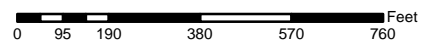


PLN2025-00002 - Calluna Properties LLP

 Subject Parcels





USE OF WHATCOM COUNTY'S GIS DATA IMPLIES THE USER'S AGREEMENT WITH THE FOLLOWING STATEMENT:

Whatcom County disclaims any warranty of merchantability or warranty of fitness of this map for any particular purpose, either express or implied. No representation or warranty is made concerning the accuracy, currency, completeness or quality of data depicted on this map. Any user of this map assumes all responsibility for use thereof, and further agrees to hold Whatcom County harmless from and against any damage, loss, or liability arising from any use of this map.



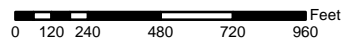


PLN2025-00002 - Calluna Properties LLP

-  Subject Parcels
-  Birch Bay Water & Sewer District Service Area
-  Grandview Beach Water Assn. Service Area
-  Whatcom PUD #1

USE OF WHATCOM COUNTY'S GIS DATA IMPLIES THE USER'S AGREEMENT WITH THE FOLLOWING STATEMENT:


Whatcom County disclaims any warranty of merchantability or warranty of fitness of this map for any particular purpose, either express or implied. No representation or warranty is made concerning the accuracy, currency, completeness or quality of data depicted on this map. Any user of this map assumes all responsibility for use thereof, and further agrees to hold Whatcom County harmless from and against any damage, loss, or liability arising from any use of this map.





Wellhead Protection Areas, Wetlands, Streams




PLN2025-00002 - Calluna Properties LLP

 Subject Parcels

Wellhead Protection Areas

-  High Susceptibility -1 Year travel time
-  High Susceptibility -10 Year travel time

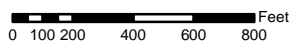
Wetlands

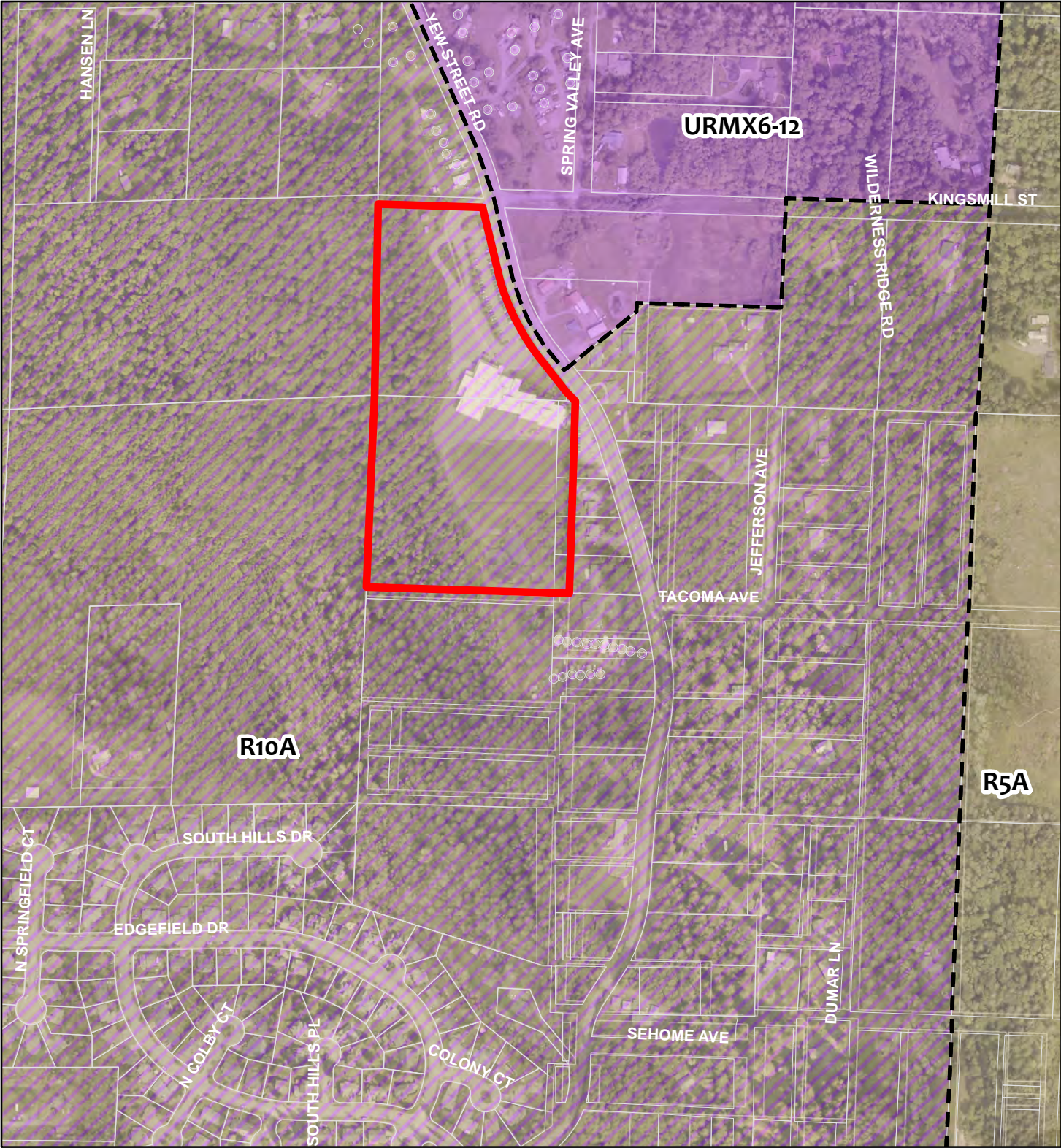
-  Project Wetlands
-  USFWS NWI
-  Birch Bay (Birch Bay Watershed Characterization

& Watershed Planning Pilot Study 2007)





USE OF WHATCOM COUNTY'S GIS DATA IMPLIES THE USER'S AGREEMENT WITH THE FOLLOWING STATEMENT:
 Whatcom County disclaims any warranty of merchantability or warranty of fitness of this map for any particular purpose, either express or implied. No representation or warranty is made concerning the accuracy, currency, completeness or quality of data depicted on this map. Any user of this map assumes all responsibility for use thereof, and further agrees to hold Whatcom County harmless from and against any damage, loss, or liability arising from any use of this map.





PLN2025-00003 - Bellingham School District #501



-  Subject Parcels
-  Existing Zoning

 Urban Growth Area Reserve

Zoning Designations

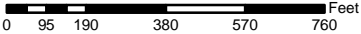
- R5A - Rural 1 DU/5 Acres
- R10A - Rural 1 DU/10 Acres
- URMX6-12 - Urban Res. Mixed 6-12 DU/Acre

Comprehensive Plan

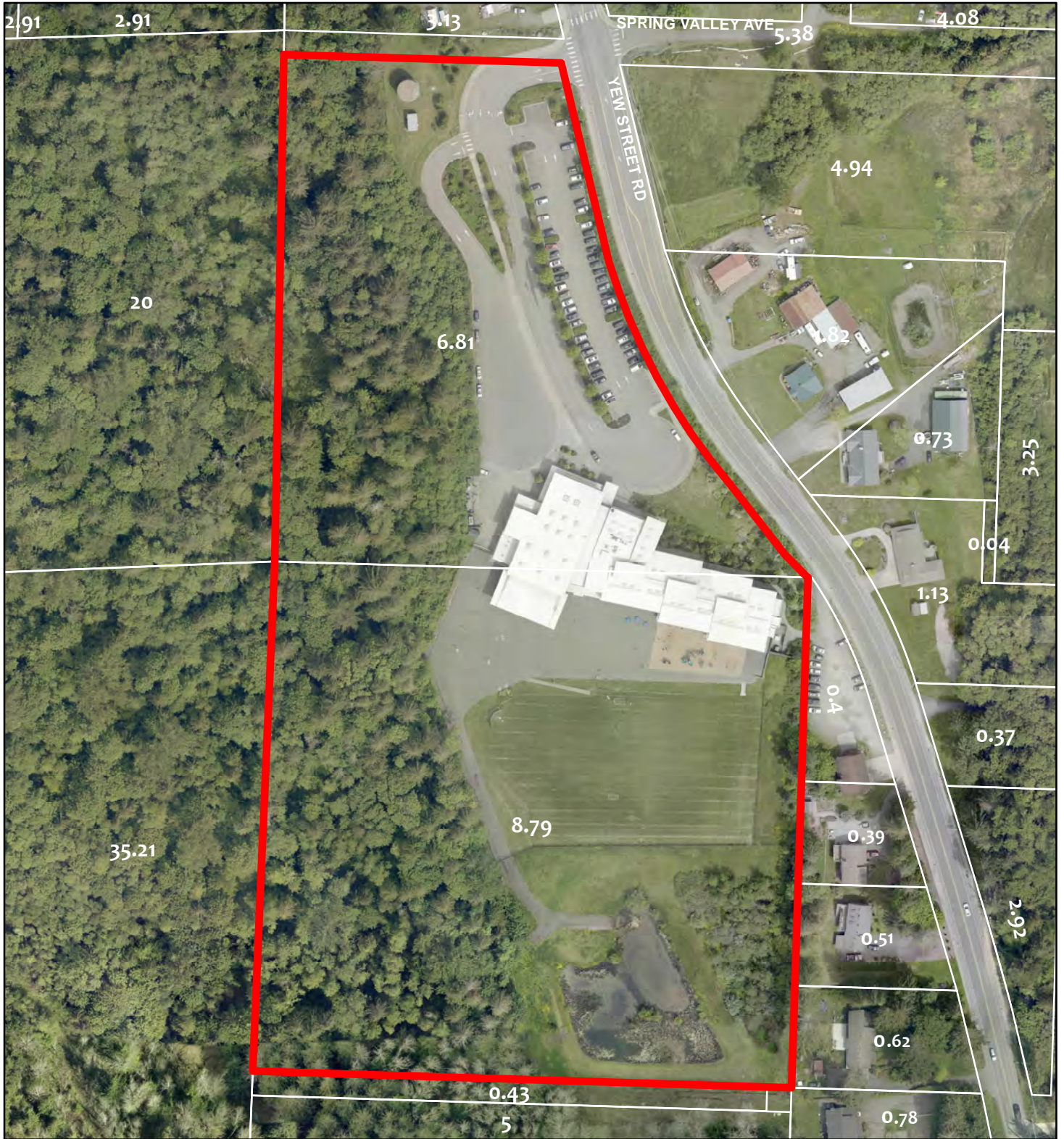
-  Rural
-  Urban Growth Area

USE OF WHATCOM COUNTY'S GIS DATA IMPLIES THE USER'S AGREEMENT WITH THE FOLLOWING STATEMENT:


Whatcom County disclaims any warranty of merchantability or warranty of fitness of this map for any particular purpose, either express or implied. No representation or warranty is made concerning the accuracy, currency, completeness or quality of data depicted on this map. Any user of this map assumes all responsibility for use thereof, and further agrees to hold Whatcom County harmless from and against any damage, loss, or liability arising from any use of this map.



Surrounding Parcels

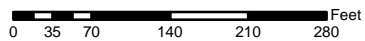


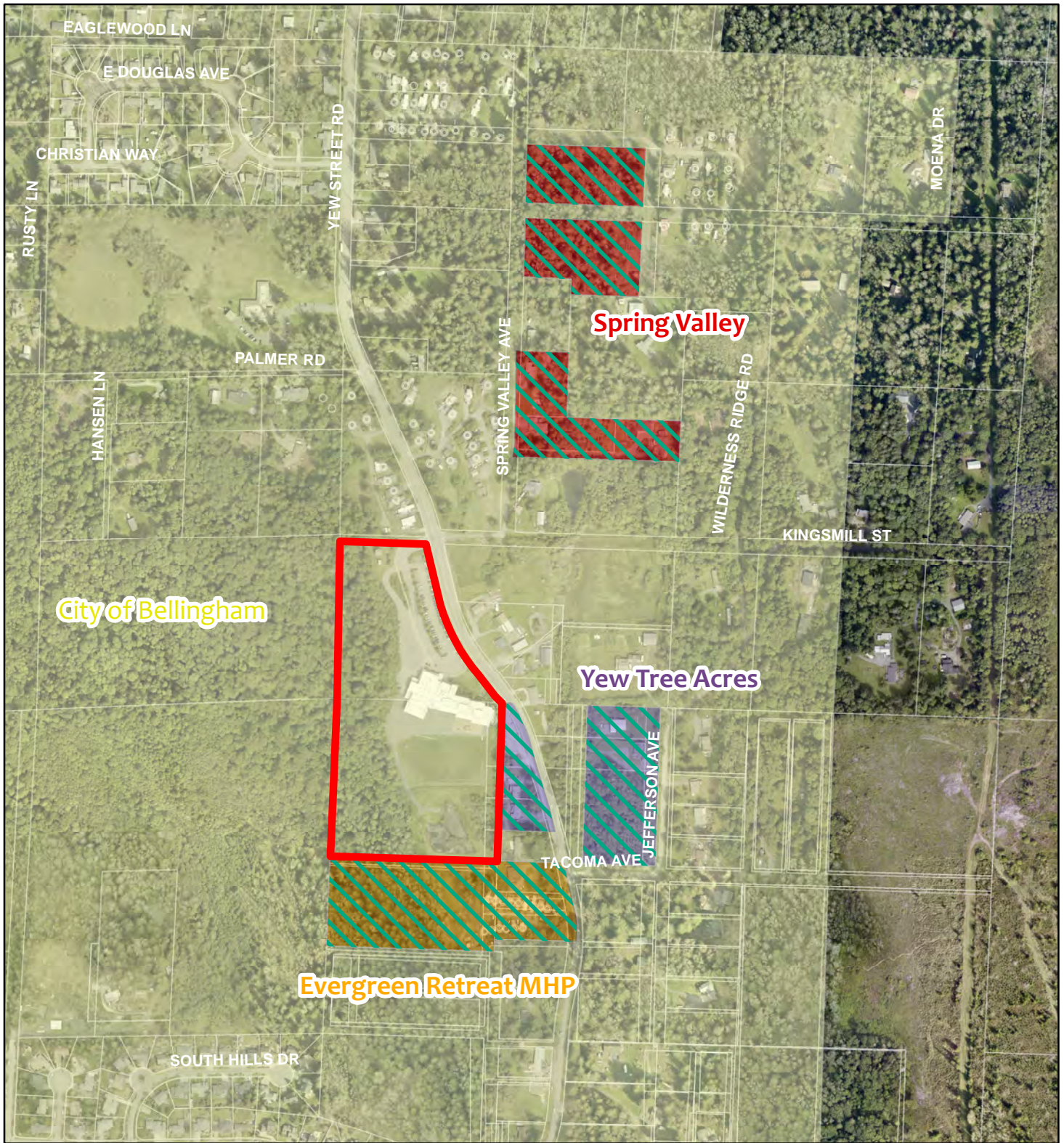
PLN2025-00003 - Bellingham School District #501

 Subject Parcels






USE OF WHATCOM COUNTY'S GIS DATA IMPLIES THE USER'S AGREEMENT WITH THE FOLLOWING STATEMENT:

Whatcom County disclaims any warranty of merchantability or warranty of fitness of this map for any particular purpose, either express or implied. No representation or warranty is made concerning the accuracy, currency, completeness or quality of data depicted on this map. Any user of this map assumes all responsibility for use thereof, and further agrees to hold Whatcom County harmless from and against any damage, loss, or liability arising from any use of this map.



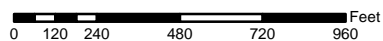


PLN2025-00003 - Bellingham School District #501

-  Subject Parcels
-  City of Bellingham Water Service Area
-  Evergreen Retreat MHP Water Service Area
-  Spring Valley Community Well
-  Yew Tree Acres Water Assn. Water Service Area

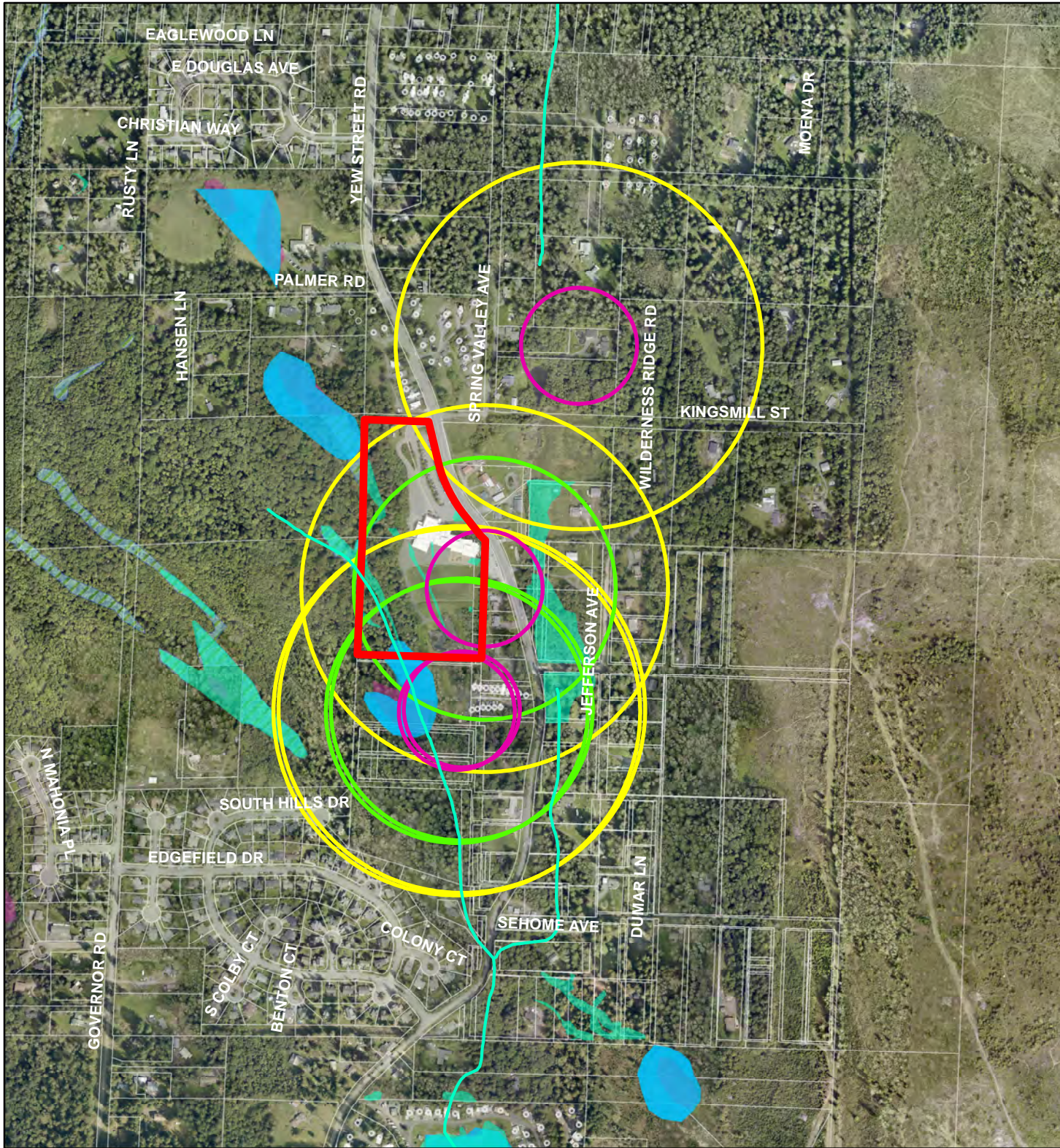
USE OF WHATCOM COUNTY'S GIS DATA IMPLIES THE USER'S AGREEMENT WITH THE FOLLOWING STATEMENT:

Whatcom County disclaims any warranty of merchantability or warranty of fitness of this map for any particular purpose, either express or implied. No representation or warranty is made concerning the accuracy, currency, completeness or quality of data depicted on this map. Any user of this map assumes all responsibility for use thereof, and further agrees to hold Whatcom County harmless from and against any damage, loss, or liability arising from any use of this map.




 Water Service Area Overlap




Wellhead Protection Areas, Wetlands, Streams





PLN2025-00003 - Bellingham School District #501

 Subject Parcels

Wellhead Protection Areas

-  High Susceptibility - 1 Year travel time
-  High Susceptibility - 5 Year travel time
-  High Susceptibility - 10 Year travel time

Wetlands

-  Project Wetlands
-  PHS Wetlands



USE OF WHATCOM COUNTY'S GIS DATA IMPLIES THE USER'S AGREEMENT WITH THE FOLLOWING STATEMENT:

Whatcom County disclaims any warranty of merchantability or warranty of fitness of this map for any particular purpose, either express or implied. No representation or warranty is made concerning the accuracy, currency, completeness or quality of data depicted on this map. Any user of this map assumes all responsibility for use thereof, and further agrees to hold Whatcom County harmless from and against any damage, loss, or liability arising from any use of this map.

