



## MERIDIAN SCHOOL DISTRICT

### Contact Information

**Kurt Harvill**  
Assistant Superintendent  
214 W Laurel Road  
Bellingham, WA 98226  
360-318-2153

### Approving Authority

**James Everett, Ed.D**  
Superintendent  
214 W Laurel Road  
Bellingham, WA 98226  
360-398-7111

## Planning Process

School District will make use of its capabilities, infrastructure, and dedicated population. The School District will implement its mitigation strategy over the next five years primarily through its annual budget process and varying grant application processes.

The Meridian School District reviewed the previous plan to identify new hazards and recent events to inform new measures. We will work in conjunction with those organizations identified under each mitigation measure to initiate the overall mitigation strategy. Each department or office responsible for carrying out the measures will play a role in self-monitoring and evaluating achievement of measures and objectives. Because the School District has no land use or regulatory authority, it must rely heavily on collaboration with neighboring jurisdictions. For example, for density-related issues the School District will work with partners Whatcom County, and the Hazard Mitigation Forum to implement recommendations into the existing Whatcom County Comprehensive Plan. Other measures will be implemented through collaboration with the identified jurisdictions/departments listed under each measure's evaluation.

These efforts fall under a broader implementation strategy that represents a county-wide effort. This strategy must be adaptable to change while being consistent in its delivery.



### **Key Contributor List**

- Kurt Harvill, Assistant Superintendent
- James Everett, Ed.D, Superintendent
- Joe O’Brien – District Technology Director
- Jay Yeager – District Maintenance and Facilities Director

The information contained in the Natural Hazards Mitigation Plan update regarding hazards, risks, vulnerability, and potential mitigation is based on the best available science and technology currently available. This information and related data on natural hazards potentially impacting Meridian School District will be used as a tool when the School District updates other plans and programs, such as the following:

- Strategic and Emergency Response Plan
- Damage Assessment Plan

As additional information becomes available from other planning sources that can enhance this Plan, that information will be incorporated through the periodic update process.

### **Plan Maintenance for the Meridian School District**

The mitigation implementation strategy is a three-tiered method that emphasizes localized needs and vulnerabilities while addressing School District and multi-jurisdictional policies and programs. The first tier is implementation through individual citizen level—existing public education programs in the School District. For example, programs at the individual level through safety presentations and evacuation drills. The second is a School District-wide mechanism for implementation comprised of School District employees implementing strategies from the Emergency Programs Office, Construction Management Office, Facilities Management Office, and Computing & Telecommunications through an ambitious building construction and remodel plan. This perhaps offers the greatest opportunity to implement mitigation opportunities. The third tier is a more external and multi-jurisdictional mechanism, the Hazard Mitigation Forum (HMF).

This method ensures that implementation speaks to unique vulnerabilities at the most local level, allows for coordination among and between levels, and promotes collaboration and innovation. Further, it provides a structured system of monitoring implementation. Finally, it is a method that can adapt to the changing vulnerabilities of the School District, the region, and the times.



**Public Outreach and Education**

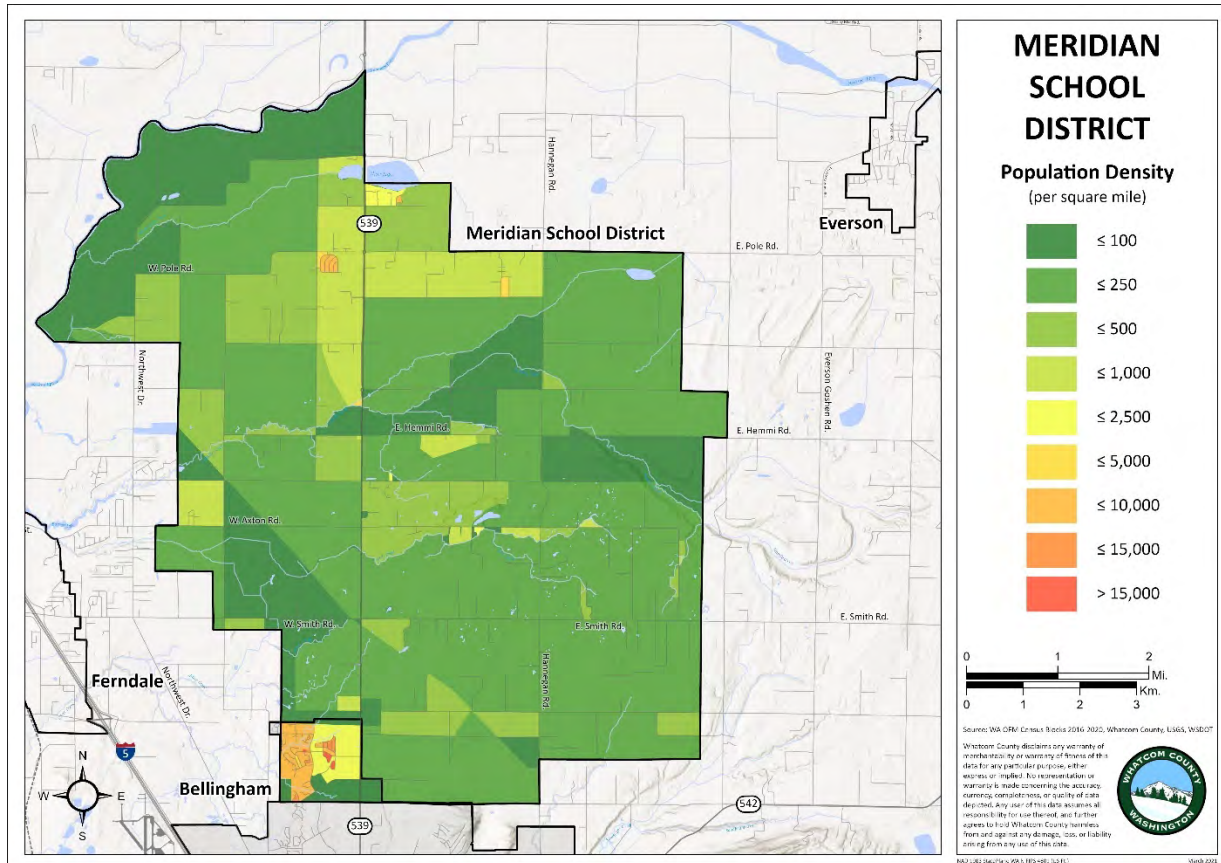
<b>Program</b>	<b>Yes/No, Year Adopted</b>	<b>Description</b>
<b>Nonprofit organizations or local residents groups focused on hazard mitigation, emergency preparedness, vulnerable populations, etc.</b>	Yes	We teach a fire-science course and have had guests come in to share with classes in the past. We have hosted the WSP drunk driving simulation each 4-6 years.
<b>Ongoing public education or information programs</b>	No Policy; District safety procedures.	We communicate with families and district community members when we are closed or are addressing some need with posting content to our website, Flash Alert system, Student Information System alerts, and robo-calling.
<b>School-related programs for natural hazard safety</b>	Policy 3432, Adopted 2013, Updated 2021	Monthly emergency drills include earthquake, various evacuations, shelter-in-place, and lockdown.
<b>StormReady certification</b>	No	Whatcom is a StormReady County
<b>Firewise Community certification</b>	No	N/A
<b>Public-Private Partnership initiatives addressing disaster-related issues</b>	No	N/A



## Overview of Meridian School District, Hazards, and Assets

### Geography of the Meridian School District

Meridian School District Students	1800 (2021 estimate)
Meridian School District Staff	250 staff
Total area	38 sq. mi. (within school district)



Washington State Office of Financial Management (OFM) 2020 population and housing estimates for 2010-2020 census block data. This map uses the 2016-2020 average population to show population density per square mile.

### Presence of Hazards and their Impacts in the Meridian School District

The main hazards of concern are severe storms and earthquakes. As recently as November 2013, the Meridian School District High School sustained severe cold and wind, resulting in a burst sprinkler head and resulting flood. The damage has been repaired. Another burst pipe, power loss, barn door was blown off and replaced, roofing blown off by wind in the Performing Arts building during winter of 2020. The damage inflicted is a reminder of why proactive steps should be taken to mitigate future natural hazard events.



While enrollment has increased slightly in the past five years, we have not seen an impact to the context of natural hazards in the district. We are currently bringing in eight (8) portables to three sites in the district (three at Meridian Middle School, four at Irene Reither Elementary School, and one to the MP3 campus). There have been no changes other than an increase enrollment and the installation of additional portables (as noted above) during the summer of 2021.

In the table below is a list of the major hazards that effect Whatcom County. The second column provides the percentage of Meridian School Districts' total area that is exposed to each hazard. The third column indicates the severity of anticipated impacts to community function, considering the credible worst-case hazard scenario. Severity of anticipated impacts considers effects on basic community function such as shelter, transportation, utilities, commerce, industry, agriculture, education, health, recreation, and cultural identity. Severity ranges from none to extreme, as shown in the key below the table. Finally, the last column of the table describes where the hazard impacts the community and which services the hazard would most significantly impact.



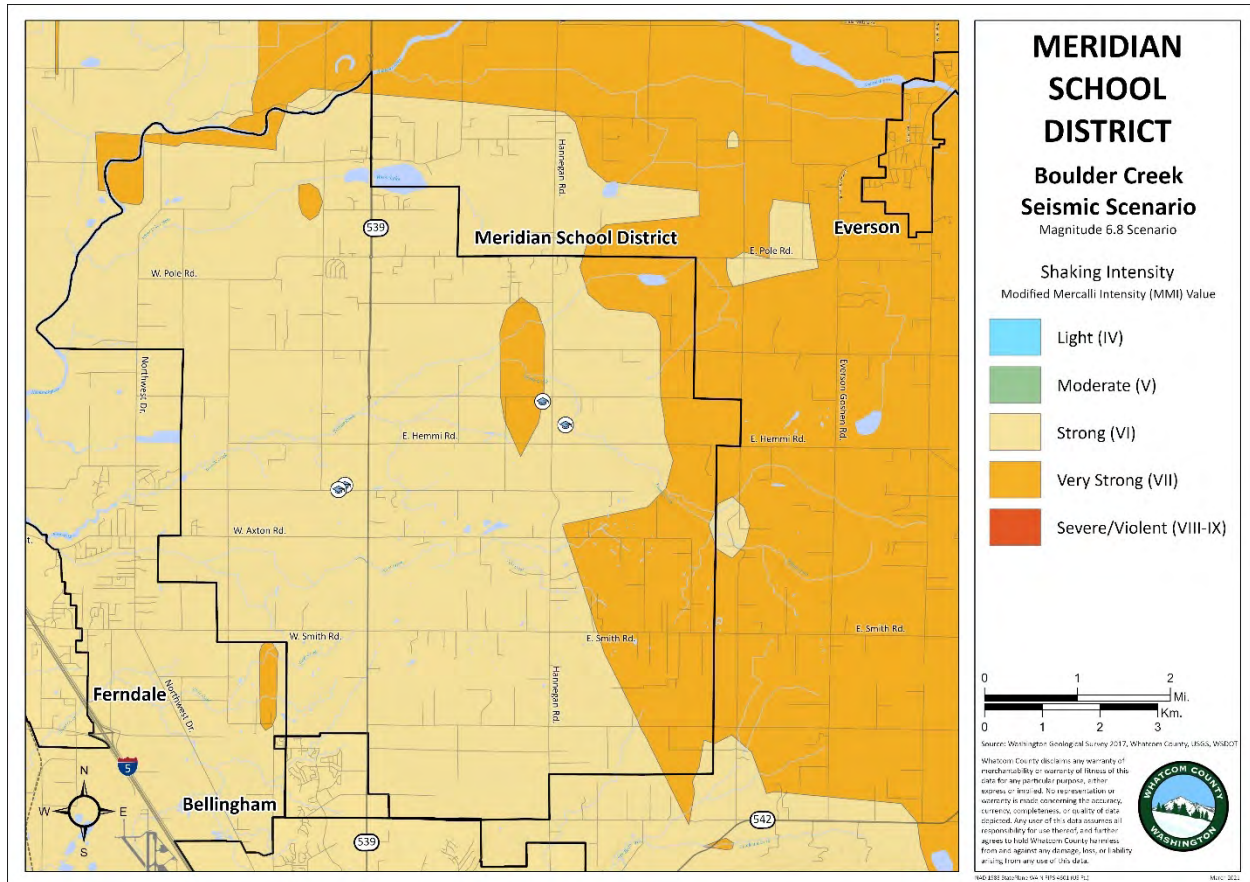
	Hazard	% area Exposed	Severity of Anticipated Impacts	Hazard Descriptions
Geological	Earthquake	97.4%	High	The Meridian School District is prone to earthquake impacts. In particular, according to the Boulder Creek Seismic Scenario, the Meridian School District could receive strong (VI) intensity in the south by the high school and very strong (VII) intensity more north by the middle school.
	Liquefaction	92.81%	High	There are seismically unstable soils throughout the school district.
	Landslide	0.04%	N/A	N/A
	Volcano	7.6%	N/A	N/A
	Tsunami	0%	N/A	N/A
	Mine Hazards	0%	N/A	There are Mine Hazards in north Bellingham, but none are directly below the Meridian schools.
Hydrological	Flooding	6%	Moderate	The Meridian High School, Meridian Parent Partnership Program building, and the Irene Reither Primary School all sit within or near a 100-year floodplain.
Meteorological	Wildfire	64.7%	Moderate	There is a risk of fires spreading to the Meridian schools.
	Severe Storms	100%	Moderate	The Meridian School District is subject to severe storms year-round.

Severity Scale: **None** = no impact to community function  
**Low** = minor degradation of community functions, not widespread  
**Moderate** = moderate degradation over multiple weeks or widespread  
**High** = degradation or loss over many weeks, widespread



### Natural Hazard Maps

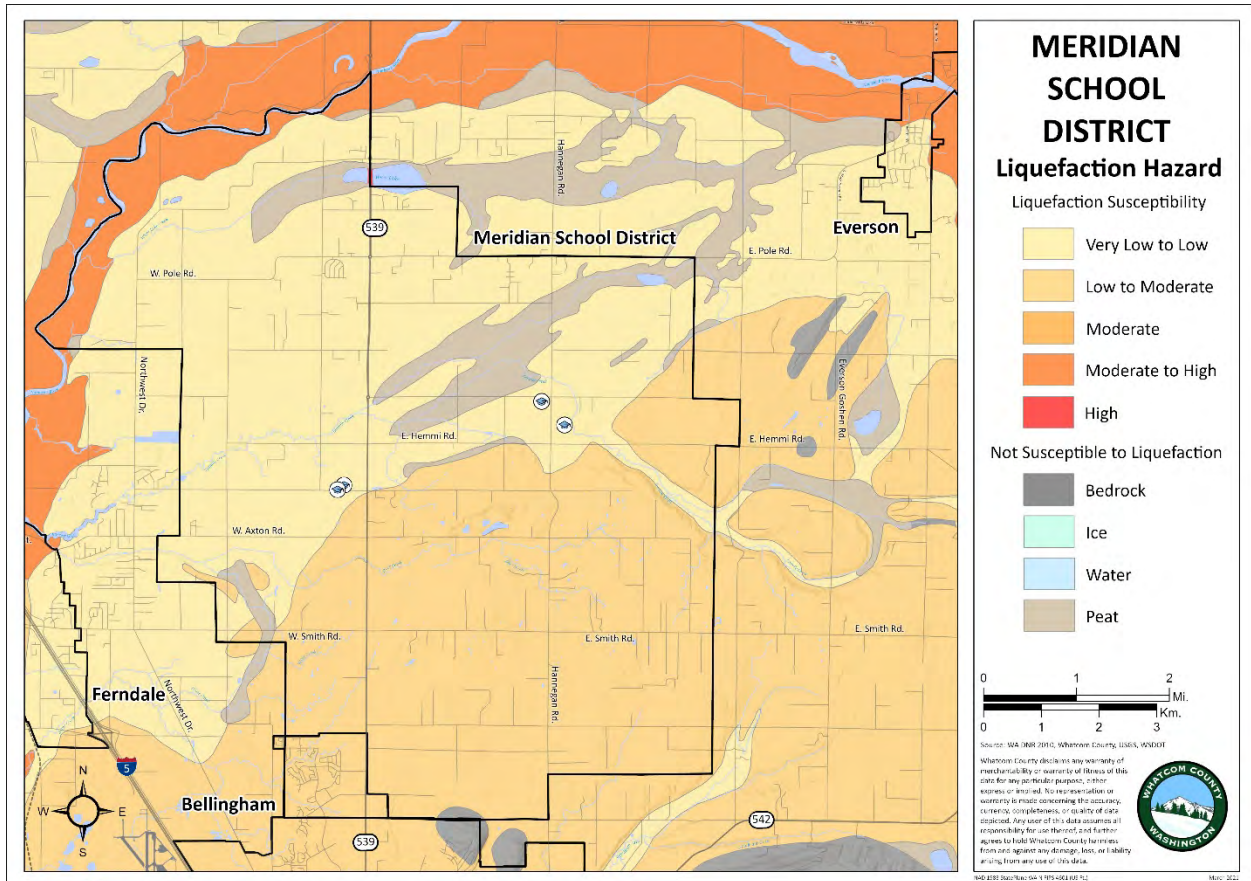
The following figures depict the natural hazards present within the jurisdiction.



Washington Department of Natural Resources (WA DNR) 2017 Boulder Creek Fault Zone seismic scenario of magnitude 6.8 data. Displays extent and severity of the modeled earthquake in the Modified Mercalli Intensity (MMI) scale.



Exhibit A  
SECTION 3. JURISTITION PROFILES AND MITIGATION  
STRATEGIES –MERIDIAN SCHOOL DISTRICT

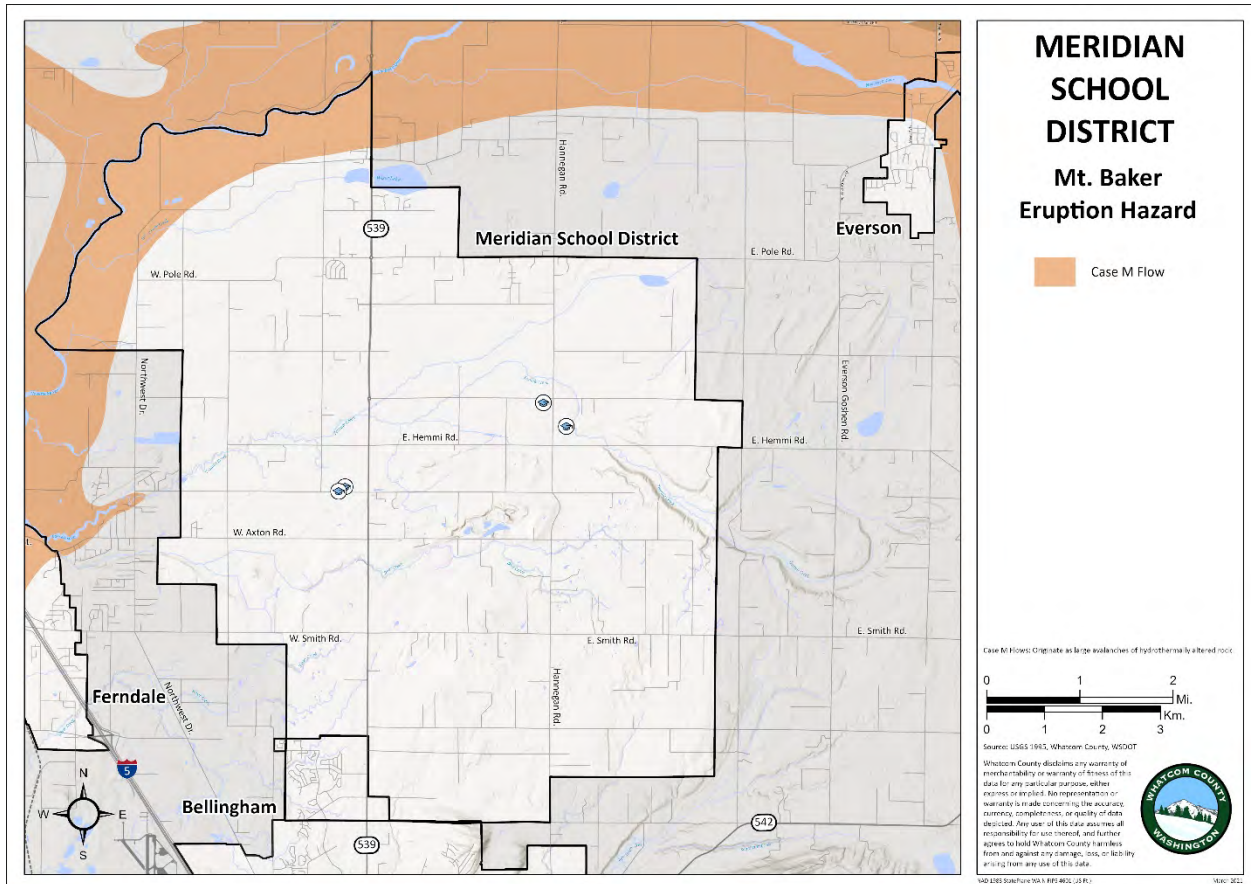


Washington Department of Natural Resources (WA DNR) 2010 liquefaction susceptibility data. This feature class is part of a geodatabase that contains statewide ground response data for Washington State.





Exhibit A  
SECTION 3. JURISTITION PROFILES AND MITIGATION  
STRATEGIES –MERIDIAN SCHOOL DISTRICT

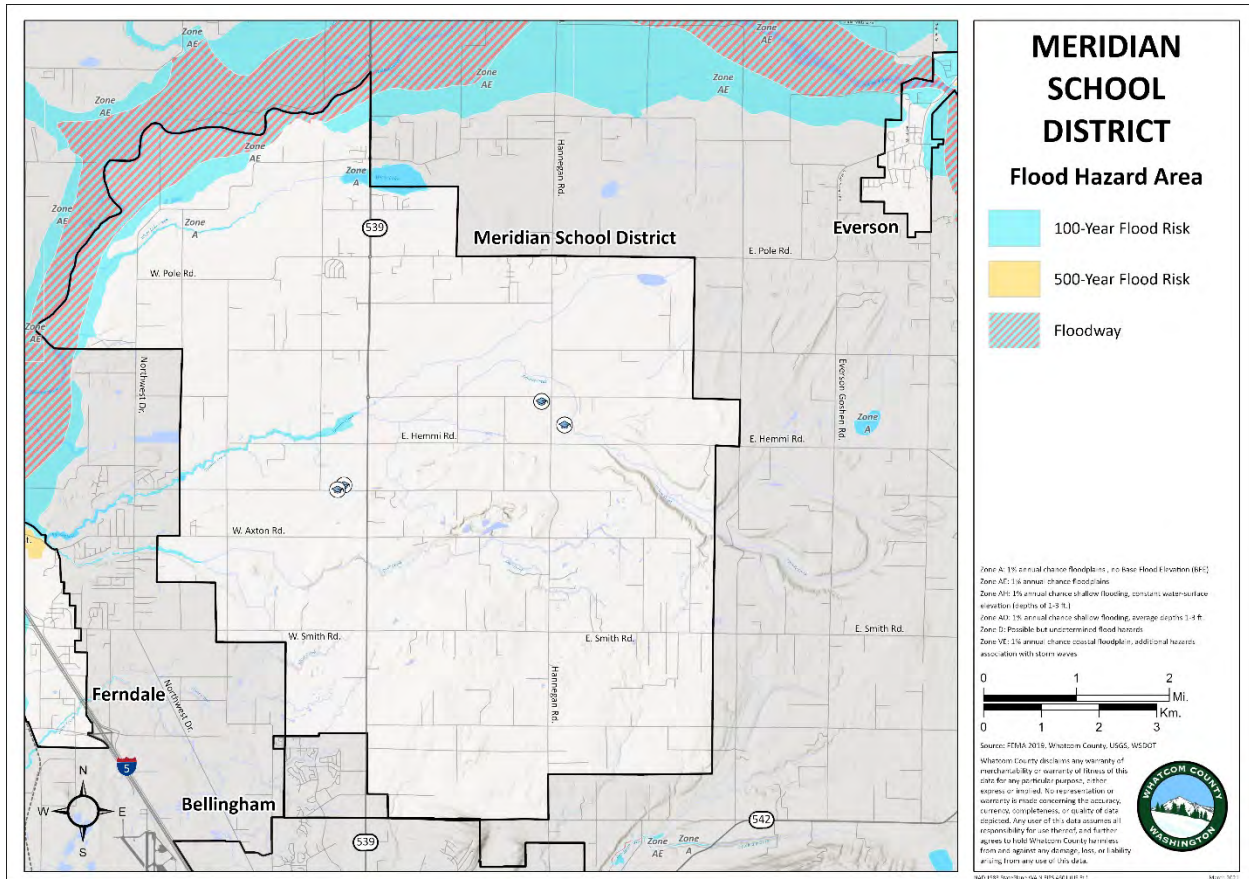


USGS Hazards from Future Activity of Mount Baker, WA (1995) data shows different volcanic flows. Case M flows originate as large avalanches of hydrothermally altered rock. Case 1 debris flows are non-cohesive flows related to melting of snow and ice, with a recurrence of 500 years. Case 2 debris flows are cohesive flows from small debris avalanches, with a recurrence of 100 years.



# Exhibit A

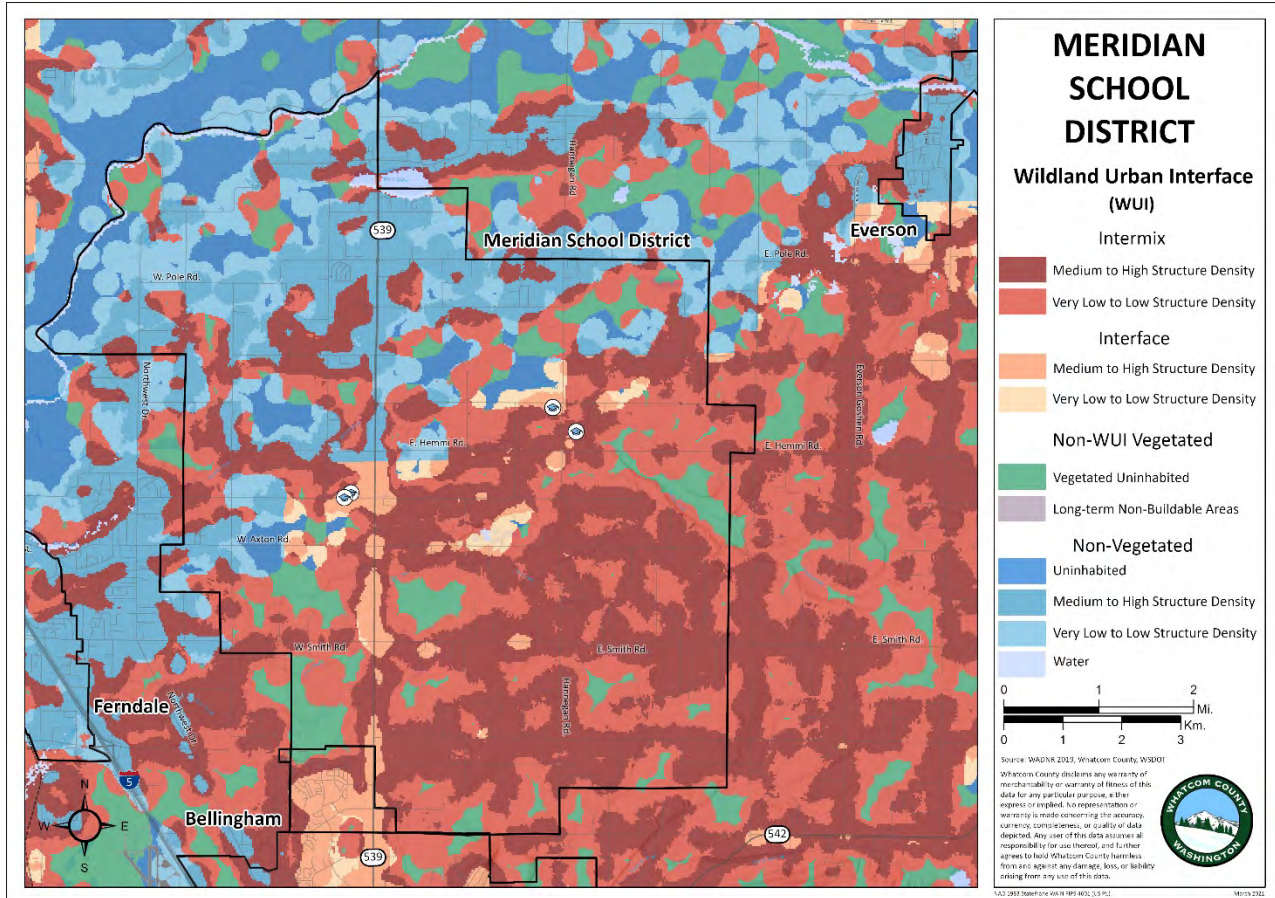
## SECTION 3. JURISDICTION PROFILES AND MITIGATION STRATEGIES –MERIDIAN SCHOOL DISTRICT



FEMA 2019 flood hazard data showing 100-year flooding, 500-year flooding, floodways, and flood zones. FEMA flood data includes both riverine and coastal flooding.



Exhibit A  
SECTION 3. JURISTITION PROFILES AND MITIGATION  
STRATEGIES –MERIDIAN SCHOOL DISTRICT



Washington Department of Natural Resources (WA DNR) 2019 mapped data of Washington’s Wildland Urban Interface (WUI). The WUI displays areas of WA where structures and wildland overlap with specific structure densities.

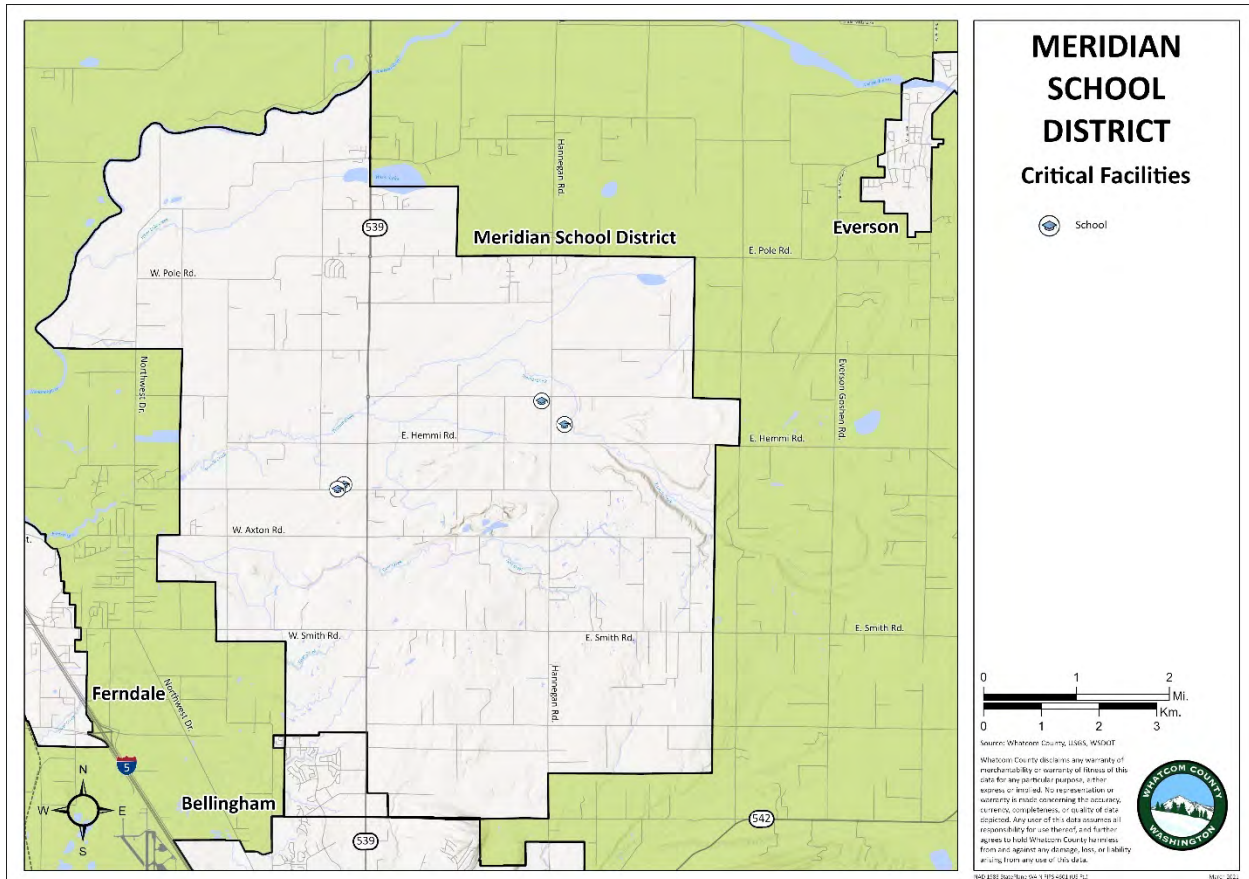


**Meridian School District Critical Facility List**

Facility Name	Facility Type	Significance	Location	Assessed Dollar Value	Notes
Middle School Gym	EF	3	861 Ten Mile Rd, Lynden, WA		
High School Gym	EF	3	194 W Laurel Rd, Bellingham, WA		
High School Performing Arts Center	EF	3	194 W Laurel Rd, Bellingham, WA		
Irene Reither Elementary	EF	3	954 East Hemmi Road, Everson, WA		
Meridian Middle School	EF	3	861 Ten Mile Rd, Lynden, WA		
Meridian High School	EF	3	194 W Laurel Rd, Bellingham, WA		School and Emergency Shelter
Meridian Parent Partnership	EF	3	240 West Laurel Road, Bellingham		School

**Facility Type:** EF = Essential Facility; HMF = Hazardous Materials Facility; HPL = High Potential Loss; LUS = Lifeline Utility System

**Significance to community function:** 1=Moderate; 2= High; 3 =Very High



Map of critical facilities identified by the Meridian School District. Across Whatcom County, critical facilities fell into 15 categories. Unique categories developed for this plan update include mass shelter, assisted living, and recovery resources. Mass shelter includes facilities such as fairgrounds and community centers. Recovery resources are facilities that are required post-hazard event, for example public works and private construction companies. Not all jurisdictions identified or included critical facilities in each category.



### Critical Facility Rankings for the Meridian School District

The table below indicates whether each critical facility falls within known hazard zones for earthquake, liquefaction, landslide, tsunami, volcano, riverine flooding, coastal flooding and wildfire zones. A rank assessment in the last column indicates how the relative risk of community impact. This ranking considers the significance of the facility to the community and the number of hazard zones the facility is within. The frequency of each hazard is also considered, such that being in a low frequency hazard zone would receive a lower ranking than that same facility being in a high frequency hazard zone. Ranking is on a scale of 1 to 10, with 1 being the facility with the highest-ranking score, and 10 being a facility with the lowest ranking score in the jurisdiction.

$$\text{Rank} = \text{Significance} * \left[ \frac{\text{EQ\_Zone}}{\text{EQ\_Freq}} + \frac{\text{LQ\_Zone}}{\text{LQ\_Freq}} + \frac{\text{LS\_Zone}}{\text{LS\_Freq}} + \dots + \frac{\text{WF\_Zone}}{\text{WF\_Freq}} \right]$$

Ranking value will be from 0.0 to 1.0, scaled to the highest ranking in the jurisdiction.

**Significance:** 1=moderate; 2=high; 3=very high, as assessed in the critical facilities list in the previous section

**Zone:** 0=facility not in hazard zone; 1 = facility in the hazard zone

**Frequency** (e.g. EQ\_Freq, LQ\_Freq) is the most difficult variable to which to assign a value. Frequency varies based upon the magnitude of a hazard event and varies from one place to another. It was not possible within the time constraints to assess frequency of hazard at each critical facility location. Instead, a qualitative assessment of the hazard frequency across the entire county was made, as shown in the chart below.

Description	Freq Value used in formula	Hazards
Frequent, occurring on the order of decades	3	Riverine flooding (FL); Coastal flooding (COA)
Rare, occurring on the order of centuries	2	Earthquake (EQ); Liquefaction (LQ); Landslide (LS); Wildfire (WF)
Very rare, occurring on the order of millennia	1	Tsunami (TSU); Volcano (VOL)

Note: Severe storm, a very frequent hazard, was omitted because it is ubiquitous and because no hazard map of storm severity was available.



**Critical Facilities Ranking Table**

Facility Name	Facility Type	Significance	EQ	LQ	LS	TSU	VOL	FL	COA	WF	Rank Assessment
Middle School Gym	EF	3	1	1	0	0	0	0	0	1	1
High School Gym	EF	3	1	1	0	0	0	0	0	1	1
High School Performing Arts Center	EF	3	1	1	0	0	0	0	0	1	1
Irene Reither Elementary	EF	3	1	1	0	0	0	0	0	1	1
Meridian Middle School	EF	3	1	1	0	0	0	0	0	1	1
Meridian High School	EF	3	1	1	0	0	0	0	0	1	1
Meridian Parent Partnership	EF	3	1	1	0	0	0	0	0	1	1

Notes: **EQ** = Earthquake; **LQ** = Liquefaction; **LS** = Landslide; **TSUN** = Tsunami; **VOL** = Volcano; **FL** = Riverine Flooding; **COA** = Coastal Flooding; **WF** = Wildland Fire



Areas and Assets Exposed, Per Hazard

Meridian School District's Exposure to Natural Hazards						
	Hazard Susceptibility	Asset County (% of Total)				Critical Facilities Appraised Value (Million)
		Area (sq.mi.)	Population	Parcels	Critical Facilities	
<b>Geological Hazards</b>	<b>Earthquake, Shaking Intensity</b>					
	<i>MMI V</i>	-	-	-	-	-
	<i>MMI VI</i>	83.5%	90.3%	85.6%	75%	\$19
	<i>MMI VII</i>	13.9%	9.6%	13.9%	25%	\$7
	<i>MMI VIII - IX</i>	-	-	-	-	-
	<b>TOTAL</b>	97.4%	99.9%	99.5%	100%	\$26
	<b>Liquefaction</b>					
	<i>Very Low to Low</i>	43.7%	36.8%	51.4%	100%	\$25
	<i>Low to Moderate</i>	45.4%	53.6%	44.5%	-	-
	<i>Moderate</i>	-	-	-	-	-
	<i>Moderate to High</i>	3.7%	1.8%	0.8%	-	-
	<i>High</i>	0.01%	0.01%	-	-	-
	<b>TOTAL</b>	92.81%	92.21%	96.7%	100%	\$25
	<b>Landslide</b>					
	<i>Landslide Low</i>	-	-	-	-	-
<i>Landslide Moderate</i>	-	-	-	-	-	





	<i>Landslide High</i>	-	-	-	-	-
	<i>Fan Low</i>	0.04%	0.01%	0.03%	-	-
	<i>Fan Moderate</i>	-	-	-	-	-
	<i>Fan High</i>	-	-	-	-	-
	<i>Mine Hazard</i>	-	-	-	-	-
	<b>TOTAL</b>	0.04%	0.01%	0.03%	-	-
	<b>Volcanic Eruption</b>					
	<i>Case 1 Debris Flows</i>	-	-	-	-	-
	<i>Case 2 Debris Flows</i>	-	-	-	-	-
	<i>Case M Flows</i>	7.6%	1.9%	3.4%	-	-
	<i>Pyroclastic Flows, Lava Flows, and Ballistic Debris</i>	-	-	-	-	-
	<i>Lateral Blast Hazard Zone</i>	-	-	-	-	-
	<b>TOTAL</b>	7.6%	1.9%	3.4%	-	-
	<b>Tsunami, Inundation Zone</b>					
	<i>Low to Moderate Inundation Potential</i>	-	-	-	-	-
	<i>Moderate to High Inundation Potential</i>	-	-	-	-	-
	<i>High Inundation Potential</i>	-	-	-	-	-
	<b>TOTAL</b>	-	-	-	-	-



<b>Hydrological Hazards</b>	<b>Flooding</b>					
	<i>100-year Flood</i>	2.2%	16.2%	1.6%	-	-
	<i>500-year Flood</i>	-	-	-	-	-
	<i>Floodway</i>	3.8%	5.7%	-	-	-
	<i>Undetermined (Zone D)</i>	-	-	-	-	-
	<b>TOTAL</b>	6%	21.9%	1.6%	-	-
<b>Meteorological</b>	<b>Wildfire Zones</b>					
	<i>Interface Very Low-Low Structure Density</i>	1.5%	0.6%	1.7%	-	-
	<i>Interface Medium-High Structure Density</i>	3.9%	16.8%	4.8%	75%	\$21
	<i>Intermix Very Low-Low Structure Density</i>	25.4%	14.7%	12.4%	-	-
	<i>Intermix Medium-High Structure Density</i>	33.9%	27.3%	44.3%	25%	\$4
	<b>TOTAL</b>	64.7%	59.4%	63.2%	100%	\$25



## Status of Meridian School District’s 2016-2020 and Ongoing Hazard Mitigation Actions

This section describes the status of mitigation actions that were proposed in the 2016 Mitigation Plan and are now 1) currently being implemented and are ongoing, 2) are now completed, or 3) are now discontinued because they are no longer needed. The actions are organized by hazard and indicate the lead agency, funding source, and status.

Lead Agency	May be more than one lead agency indicating shared responsibility and coordination
Funding Source	Local; State; FEMA; Private; Other
Current Status	Action Discontinued / Action Completed / Action ongoing and expected completion date

### Education and Outreach

**EO-a Drills: Classroom, School, and District.** Monthly emergency drills include earthquake, various evacuations, shelter-in-place, and lockdown. Goals 1, 2, and 5.

Lead Agency	Principals, District Office
Funding Source	Local
Current Status	Ongoing

**EO-b. Preparedness handbooks.** Goals 1, 4, and 5.

Lead Agency	Whatcom County Division of Emergency Management
Funding Source	County
Current Status	Ongoing

**EO-c. Annual Correspondence.** Ongoing communication with WCDEM to ensure procedures are appropriate and updated. Goal 1.

Lead Agency	WCDEM/ District
Funding Source	County / Local
Current Status	Ongoing

### Drought/heat wave

No actions ongoing, discontinued, or completed for this hazard.



## Earthquake

### EQ-a. Building Inspections/ trained staff for shut offs.

Lead Agency	Director of Maintenance
Funding Source	Local
Current Status	Ongoing

### EQ-b. Review and Update Emergency Preparedness Plan

Lead Agency	Supt or Designee
Funding Source	Local
Current Status	Ongoing

### EQ-c. Increase Risk Awareness

Lead Agency	Supt or Designee
Funding Source	Local
Current Status	Ongoing

### EQ-d. Damage Assessment Plan

Lead Agency	Designee
Funding Source	Local
Current Status	Ongoing

## Extreme Temp

No actions ongoing, discontinued, or completed for this hazard.

## Flooding

No actions ongoing, discontinued, or completed for this hazard.

## Landslide/erosion

No actions ongoing, discontinued, or completed for this hazard.

## Landslide Subsidence



No actions ongoing, discontinued, or completed for this hazard.

### Lightning

No actions ongoing, discontinued, or completed for this hazard.

### Severe Storm

#### SS-a. Storm Preparedness Check list.

Lead Agency	Director of Maintenance
Funding Source	Local
Current Status	Ongoing

#### SS-b. Post Storm checklists (debris and damage management).

Lead Agency	Director of Maintenance
Funding Source	Local
Current Status	Ongoing

#### SS-c. Review and Update Emergency Preparedness Plan

Lead Agency	Supt or Designee
Funding Source	Local
Current Status	Ongoing

### Severe Wind

No actions ongoing, discontinued, or completed for this hazard.

### Tornadoes

No actions ongoing, discontinued, or completed for this hazard.

### Tsunami

No actions ongoing, discontinued, or completed for this hazard.

### Wildfire

No actions ongoing, discontinued, or completed for this hazard.

### Winter storms/Freezes



No actions ongoing, discontinued, or completed for this hazard.

### **Multiple Hazards**

No actions ongoing, discontinued, or completed for this hazard.



## **Meridian School District 2021-2025 Hazard Mitigation Strategy**

### **Whatcom County Hazard Mitigation Goals**

Whatcom County has identified five overarching hazard mitigation goals, which represent what a community seeks to achieve through mitigation actions.

- Goal 1.** Protect Life, Property and Public Welfare
- Goal 2.** Increase Public Awareness
- Goal 3.** Preserve and Enhance Natural Systems
- Goal 4.** Encourage Partnership for Implementation
- Goal 5.** Ensure Continuity of Emergency Services

These countywide goals help guide any prioritization and implementation of mitigation actions, ensuring that the actions contribute to a community's vision for the future.

### **Meridian School District-Specific Hazard Mitigation Goals**

Meridian School District does not add to these county-wide goals.

### **Mitigation Action Options**

Appendix E of the Whatcom County Natural Hazard Mitigation Plan provides a list of mitigation options. Meridian School District considered mitigation options related to earthquakes and severe storms because these hazards have the potential to cause the greatest loss and damage. Not all mitigation options in Appendix E were relevant or a strong priority for Meridian School District. Some options have already been implemented or are ongoing in Meridian School District, as documented in the section above on the status of 2016-2020 and ongoing hazard mitigation actions.

### **Mitigation Action Prioritization**

The mitigation actions in this section are new actions that Meridian School District has prioritized for the 2021-2025 planning period and beyond. Mitigation options were prioritized based upon review of the following two criteria: 1) The action's Overall Feasibility based on engineering, environmental, financial and political considerations, 2) The Criticality of the action, based upon a consideration of which actions had the greatest potential to protect life, property and public welfare. Meridian School District is working in cooperation with the County and other participating communities and special districts to develop a systematic methodology that would use multiple evaluation criteria to determine mitigation action prioritization. This new methodology will be used in future updates of this Plan.



In the following Identified Mitigation Actions 2021-2025 table, each priority action is listed by hazard. Each action is followed by planning goals, lead agency, the priority evaluation, timeline, funding source and estimated cost, where such information is available. This information can be used by local decision makers in pursuing strategies for implementation.

1	Goals	Indicates the hazard mitigation planning goal or goals this action addresses; countywide and/or community-specific
2	Lead Agency	May be more than one lead agency indicating shared responsibility and coordination
3	Priority	H (High); M (Medium); L (Low)
4	Timeline	Short-Range (less than 2 years); Mid-Range (2-5 years); Long-Range (more than 5 years)
5	Funding Source	Local; State; FEMA; Private; Other
6	Estimated Cost	Actual; Estimated





Meridian School District Identified Mitigation Actions 2021-2025

MERIDIAN SCHOOL DISTRICT IDENTIFIED MITIGATION ACTIONS 2021-2025							
MITIGATION ACTIONS		(1) Goals	(2) Lead Responsibility	(3) Priority	(4) Timeline	(5) Funding Source	(6) Estimated Cost
Hazard	Action Items						
<b>Education and Outreach</b> Education and Awareness Actions	These are actions that inform and educate citizens, elected officials, and property owners about hazards and ways to mitigate them.						
	<i>EO-a Ongoing -- Drills: Classroom, School, and District</i> Monthly emergency drills include earthquake, various evacuations, shelter-in-place, and lockdown.	1,2,5	Principals, District office		0		
	<i>EO-b. Ongoing -- Preparedness handbooks.</i>	1,4,5	WCDEM		0		
	<i>EO-c Ongoing -- Annual Correspondence</i> Ongoing communication with WCDEM to ensure procedures are appropriate and updated.	1	WCDEM/ District		0		
<b>Hazard Specific</b> (Reference: <a href="#">Whatcom County Mitigation Ideas</a> )	Actions communities should consider to identify and evaluate a range of potential mitigation actions for reducing risk to natural hazards and disasters.						

<b>Priority:</b> H (High); M (Medium); L (Low)	<b>Timeline:</b> Short-Range (less than 2 years); Mid-Range (2-5 years); Long-Range (more than 5 years); Ongoing	<b>Funding Source:</b> Local; State; FEMA; Private; Other	<b>Estimated Cost:</b> Actual; Estimated
---	---	--	---

# Exhibit A



MERIDIAN SCHOOL DISTRICT IDENTIFIED MITIGATION ACTIONS 2021-2025							
MITIGATION ACTIONS		(1) Goals	(2) Lead Responsibility	(3) Priority	(4) Timeline	(5) Funding Source	(6) Estimated Cost
Hazard	Action Items						
<b>Dam/Levee Failures</b> (See: Flooding)	There are no new actions considered/all actions ongoing, discontinued, or completed						
<b>Droughts/Heat Waves</b>	There are no new actions considered/all actions ongoing, discontinued, or completed						
<b>Earthquakes</b>	<i><b>EQ-a. Ongoing: Building Inspections/ trained staff for shut offs.</b></i>		1,5	Director of Maintenance			
	<i><b>EQ-b. Ongoing: Review and Update Emergency Preparedness Plan</b></i>		1, 5	Supt or Designee	0		
	<i><b>EQ-c. Ongoing: Increase Risk Awareness</b></i>		2	Supt or Designee	0		
	<i><b>EQ-d. Ongoing: Damage Assessment Plan</b></i>		1, 5	Supt or Designee	0		
<b>Extreme Temperatures</b>	There are no new actions considered/all actions ongoing, discontinued, or completed						
<b>Flooding</b>	There are no new actions considered/all actions ongoing, discontinued, or completed						

<b>Priority:</b> H (High); M (Medium); L (Low)	<b>Timeline:</b> Short-Range (less than 2 years); Mid-Range (2-5 years); Long-Range (more than 5 years); Ongoing	<b>Funding Source:</b> Local; State; FEMA; Private; Other	<b>Estimated Cost:</b> Actual; Estimated
---	---	--	---



MERIDIAN SCHOOL DISTRICT IDENTIFIED MITIGATION ACTIONS 2021-2025							
MITIGATION ACTIONS		(1) Goals	(2) Lead Responsibility	(3) Priority	(4) Timeline	(5) Funding Source	(6) Estimated Cost
Hazard	Action Items						
<b>Landslide/ Erosion</b>	There are no new actions considered/all actions ongoing, discontinued, or completed						
<b>Land Subsidence</b>	There are no new actions considered/all actions ongoing, discontinued, or completed						
<b>Lightning</b>	There are no new actions considered/all actions ongoing, discontinued, or completed						
<b>Severe Storms</b>	<i>SS-a. Ongoing: Storm Preparedness Checklist.</i>	1,5	Director of Maintenance		0		
	<i>SS-b. Ongoing: Post Storm checklists (debris and damage management)</i>	1,5	Director of Maintenance		0		
	<i>SS-c. Ongoing: Review and Update Emergency Preparedness Plan</i>	1,5	Supt or Designee		0		
<b>Severe Wind</b>	There are no new actions considered/all actions ongoing, discontinued, or completed						
<b>Tornadoes</b>	There are no new actions considered/all actions ongoing, discontinued, or completed						
<b>Tsunami</b>	There are no new actions considered/all actions ongoing, discontinued, or completed						

<b>Priority:</b> H (High); M (Medium); L (Low)	<b>Timeline:</b> Short-Range (less than 2 years); Mid-Range (2-5 years); Long-Range (more than 5 years); Ongoing	<b>Funding Source:</b> Local; State; FEMA; Private; Other	<b>Estimated Cost:</b> Actual; Estimated
---	---	--	---

# Exhibit A



MERIDIAN SCHOOL DISTRICT IDENTIFIED MITIGATION ACTIONS 2021-2025							
MITIGATION ACTIONS		(1) Goals	(2) Lead Responsibility	(3) Priority	(4) Timeline	(5) Funding Source	(6) Estimated Cost
Hazard	Action Items						
<b>Wildfires</b>	There are no new actions considered/all actions ongoing, discontinued, or completed						
<b>Winter Storms/ Freezes (Severe Winter Weather)</b>	There are no new actions considered/all actions ongoing.						
<b>Multiple Hazards</b>	There are no new actions considered/all actions ongoing.						

<b>Priority:</b> H (High); M (Medium); L (Low)	<b>Timeline:</b> Short-Range (less than 2 years); Mid-Range (2-5 years); Long-Range (more than 5 years); Ongoing	<b>Funding Source:</b> Local; State; FEMA; Private; Other	<b>Estimated Cost:</b> Actual; Estimated
---	---	--	---



## Meridian School District Annual Review and Progress for Hazard-Specific Mitigation Actions 2021-2025

Progress monitoring means tracking the implementation of the hazard specific mitigation actions over time. Each jurisdiction must identify how, when, and by whom action items will be monitored. The responsible agency assigned to each mitigation action is responsible for tracking and reporting on each of their actions.

Annual review and progress reporting includes the following:

- Step One:** Identify mitigation actions that your planning team has identified for the annual review. The planning team has the option to address ALL action items, or only those that should be acted on during each review cycle.
- Step Two:** Use the table below to track annual progress. For each action item selected for annual review insert the appropriate letter that indicates the status of that action item.
- Step Three:** Complete a progress report form as illustrated in Appendix G for each mitigation action item selected for annual review
- Step Four:** Submit the completed form(s) to the Whatcom County DEM.



Meridian School District Hazard-Specific Action Items 2021-2025 – Annual Review and Progress						
Action Items	Status (Choose One & Enter Letter): A. Completed; B. In Progress (on schedule); C. In Progress (delayed); D. Delayed Until Funding Available; E. Canceled					Notes on yearly progress
	2021	2022	2023	2024	2025	
<b>Education and Outreach</b>						
<i>EO-a Ongoing: Drills-- Classroom, School, and District</i>	B					
<i>EO-b Ongoing: Preparedness handbooks</i>	B					
<i>EO-c Ongoing: Annual Correspondence</i>	B					
<i>Add New Action Items if Applicable</i>						
<b>DAM/LEVEE FAILURES</b>						
<i>Add New Action Items if Applicable</i>	N/A					
<b>DROUGHTS/HEAT WAVES</b>						
<i>Add New Action Items if Applicable</i>	N/A					
<b>EARTHQUAKES</b>						
<i>EQ-a. Ongoing: Building Inspections/ trained staff for shut offs.</i>	B					
<i>EQ-b Ongoing: Review and Update Emergency Preparedness Plan</i>	B					
<i>EQ-c Ongoing: Increase Risk Awareness</i>	B					
<i>EQ-d Ongoing: Damage assessment plan</i>	B					
<i>Add New Action Items if Applicable</i>						
<b>SEVERE STORMS</b>						
<i>SS-a. Ongoing: Storm Preparedness Check list</i>	B					
<i>SS-b. Ongoing: Post Storm checklists (debris and damage management)</i>	B					
<i>SS-c. Ongoing: Review and Update Emergency Preparedness Plan</i>	B					
<i>Add New Action Items if Applicable</i>						



Meridian School District Hazard-Specific Action Items 2021-2025 – Annual Review and Progress						
Action Items	Status (Choose One & Enter Letter): A. Completed; B. In Progress (on schedule); C. In Progress (delayed); D. Delayed Until Funding Available; E. Canceled					Notes on yearly progress
	2021	2022	2023	2024	2025	
<b>LANDSLIDES/EROSION</b>						
<i>Add New Action Items if Applicable</i>						
<b>LAND SUBSIDENCE</b>						
<i>Add New Action Items if Applicable</i>						
<b>TORNADOES</b>						
<i>Add New Action Items if Applicable</i>						
<b>TSUNAMI</b>						
<i>Add New Action Items if Applicable</i>						
<b>WILDFIRES</b>						
<i>Add New Action Items if Applicable</i>						
<b>EXTREME TEMPERATURES</b>						
<i>Add New Action Items if Applicable</i>						
<b>LANDSLIDE</b>						
<i>Add New Action Items if Applicable</i>						
<b>LIGHTNING</b>						
<i>Add New Action Items if Applicable</i>						
<b>SEVERE WIND</b>						
<i>Add New Action Items if Applicable</i>						
<b>MULTIPLE HAZARDS</b>						
<i>Add New Action Items if Applicable</i>						







This Page Left Blank Intentionally.