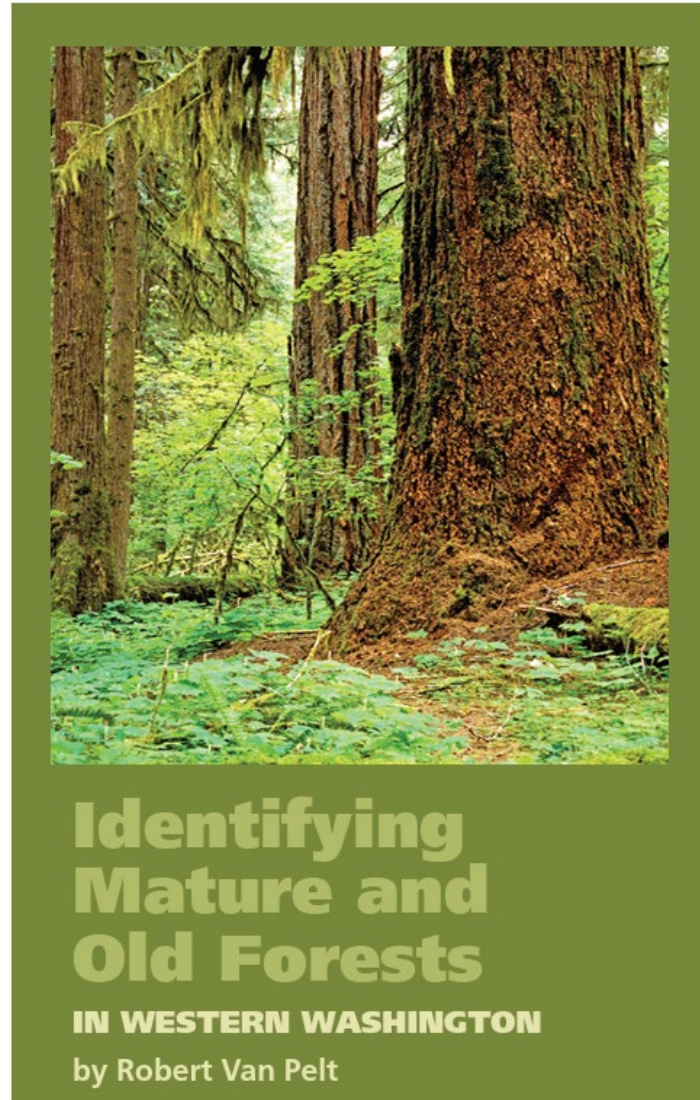


Identification of 2000 Acres

Status

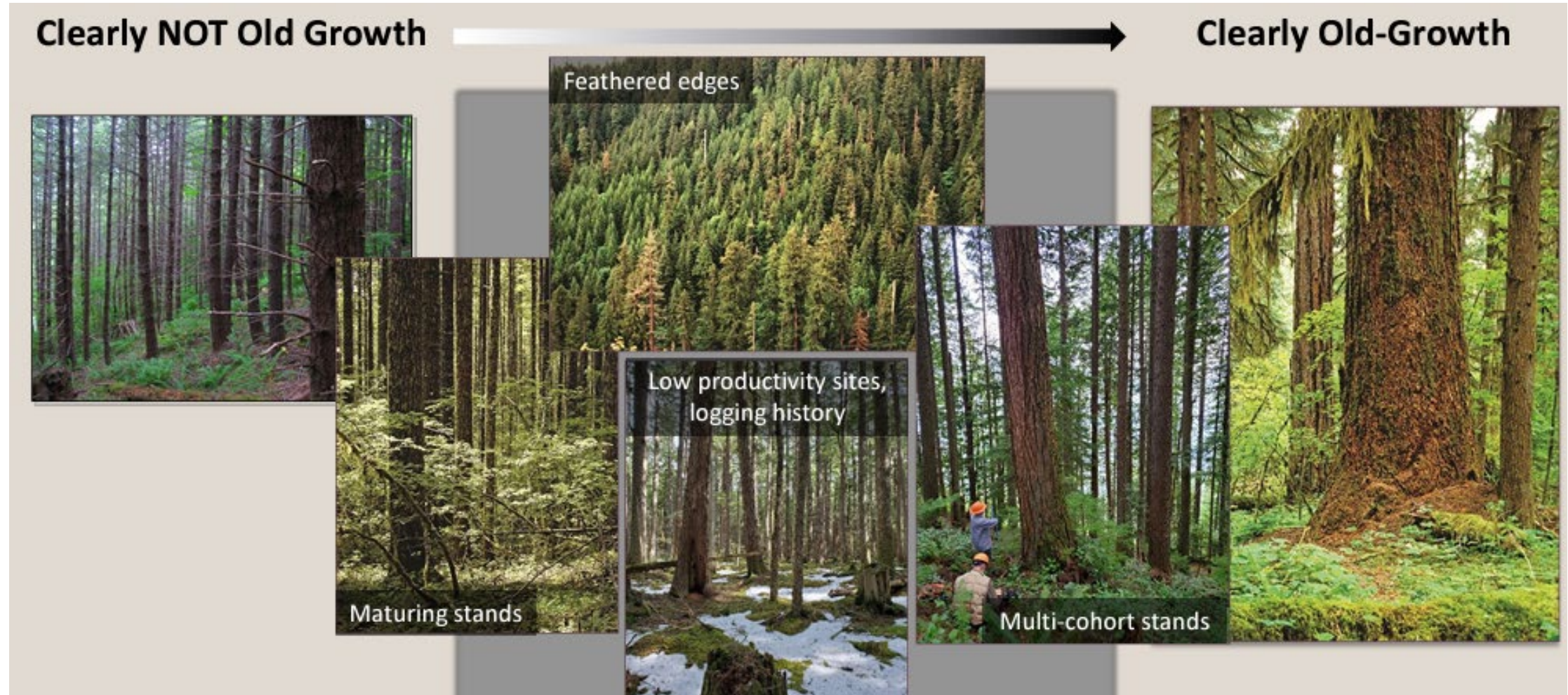
- Identification of 2000 acres
 - Utilizing Van Pelt's guide definitions of Maturation 1 and Maturation 2 to help identify "carbon dense, structurally complex" forests.
 - Seeking to conserve areas adjacent to existing habitat, in areas to improve connectivity, and to avoid isolated small fragments scattered across ownership.
- County Concurrence

Discussing the process of identification, land transaction process, and nature of federal and state forest transfer trusts with counties



Funding for Land Acquisitions

Selections based on science to ensure durable carbon storage over time



Identification of 2000 Acres

Methodology

A stand must have at least 60 metric tons per acre of live carbon and meet one or more of the following criteria:

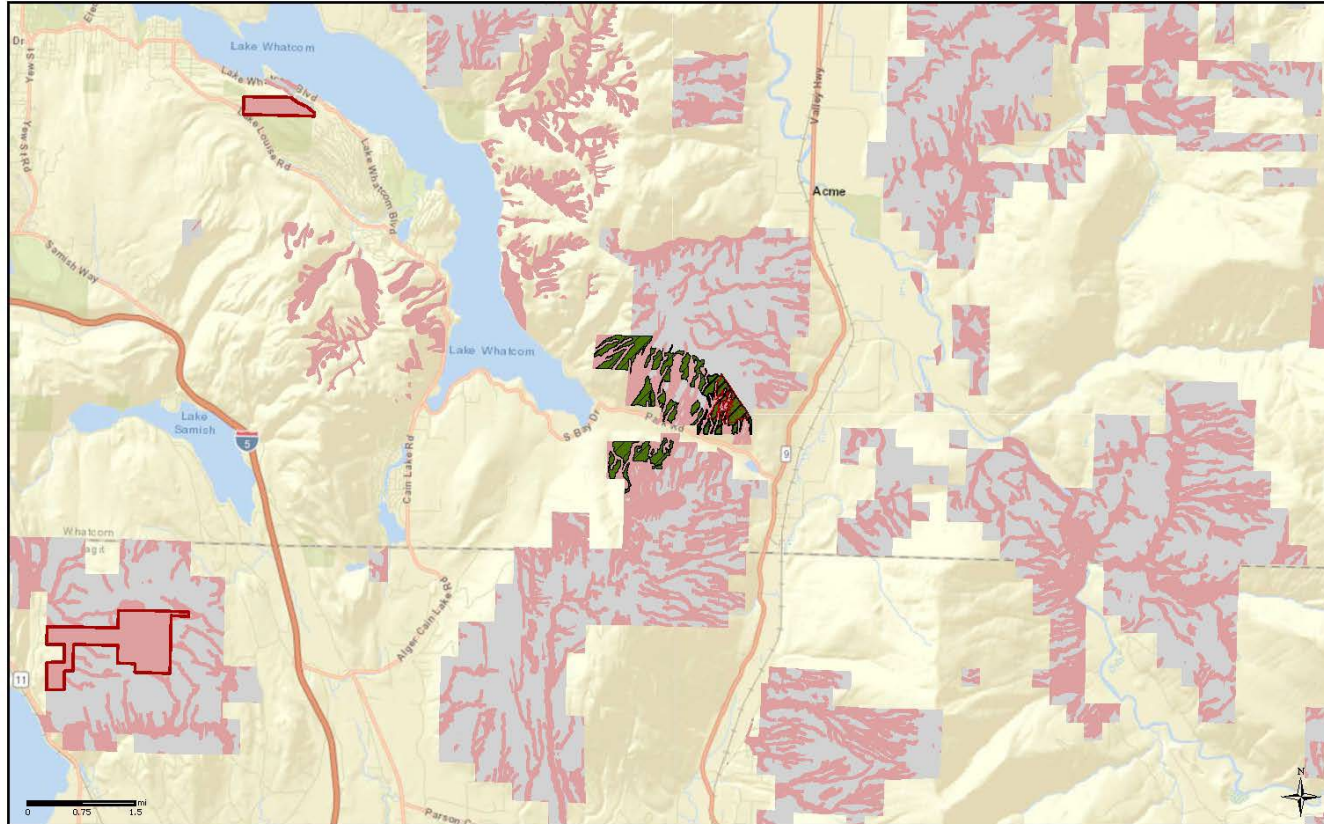
- At least 1.8 modeled canopy layers
- A Quadratic Mean Diameter* of at least 17 inches for the largest 100 trees
- At least 12 trees per acre that are in the 30 inch diameter class or larger

*The quadratic mean gives greater weight to larger trees and is equal to or greater than the arithmetic mean.

In stands with small diameters and a narrow range of diameters, the differences are slight. In stands with large diameters and a wide range of diameters present or with strongly skewed diameter distributions, the differences between arithmetic mean and quadratic mean diameters can be substantial.



Whatcom County



Potential 2000 Acres Sites
Anderson Creek

- Proposed Sites
- Approved Natural Area Boundaries
- Potential 2000 Acres Sites
- Planned VRH/LUC (through FY26)
- VRH-deferred
- DNR-Managed Lands

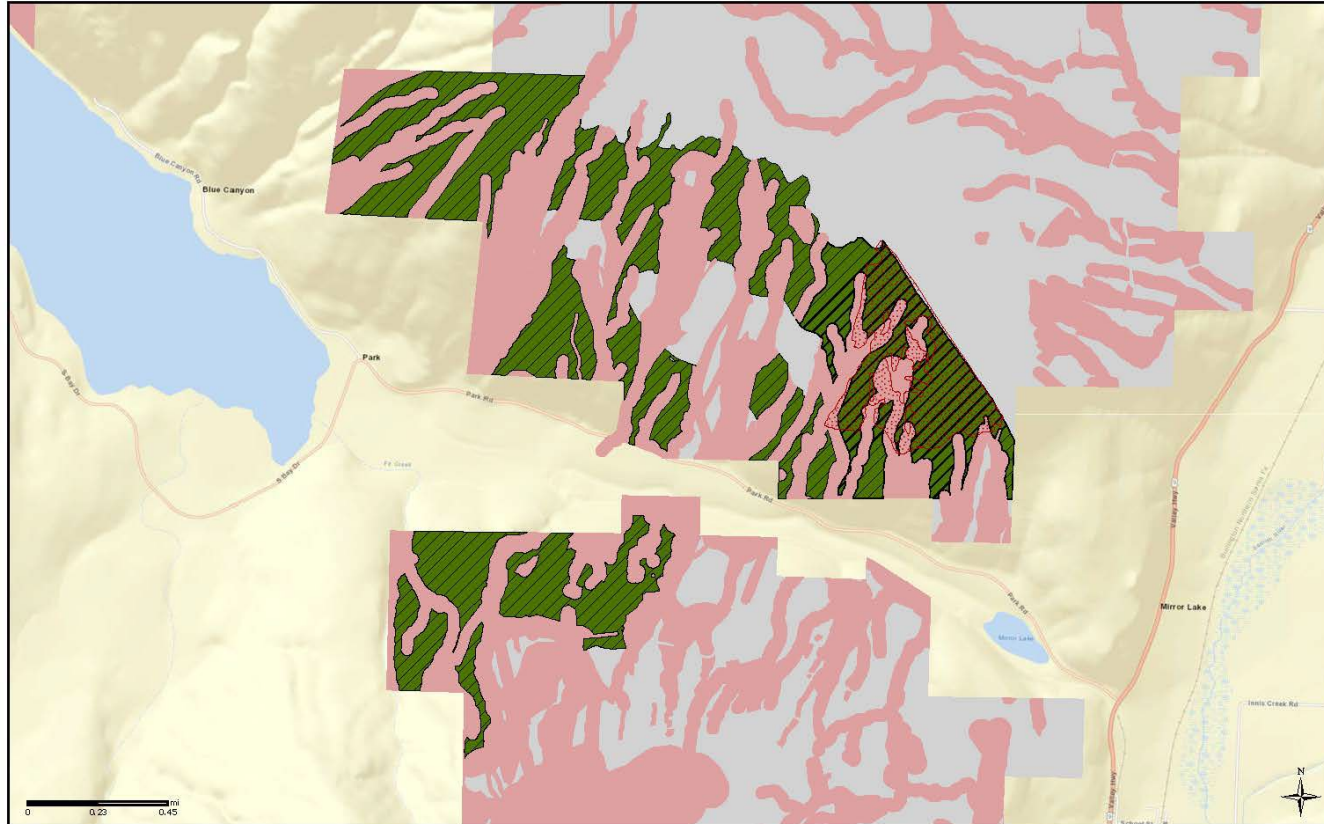
All data are draft and subject to change.



Anderson Creek

Trusts	Acres
State Forest Transfer	190
Scientific School	83
State Forest Purchase	64
Common School and Indemnity	233
Agricultural School	4
Capitol Grant	1
Grand Total	575

Whatcom County



Potential 2000 Acres Sites
Anderson Creek

- | | |
|--------------------------------|-------------------|
| Proposed Sites | VRH-deferred |
| Planned VRH/LUC (through FY26) | DNR-Managed Lands |

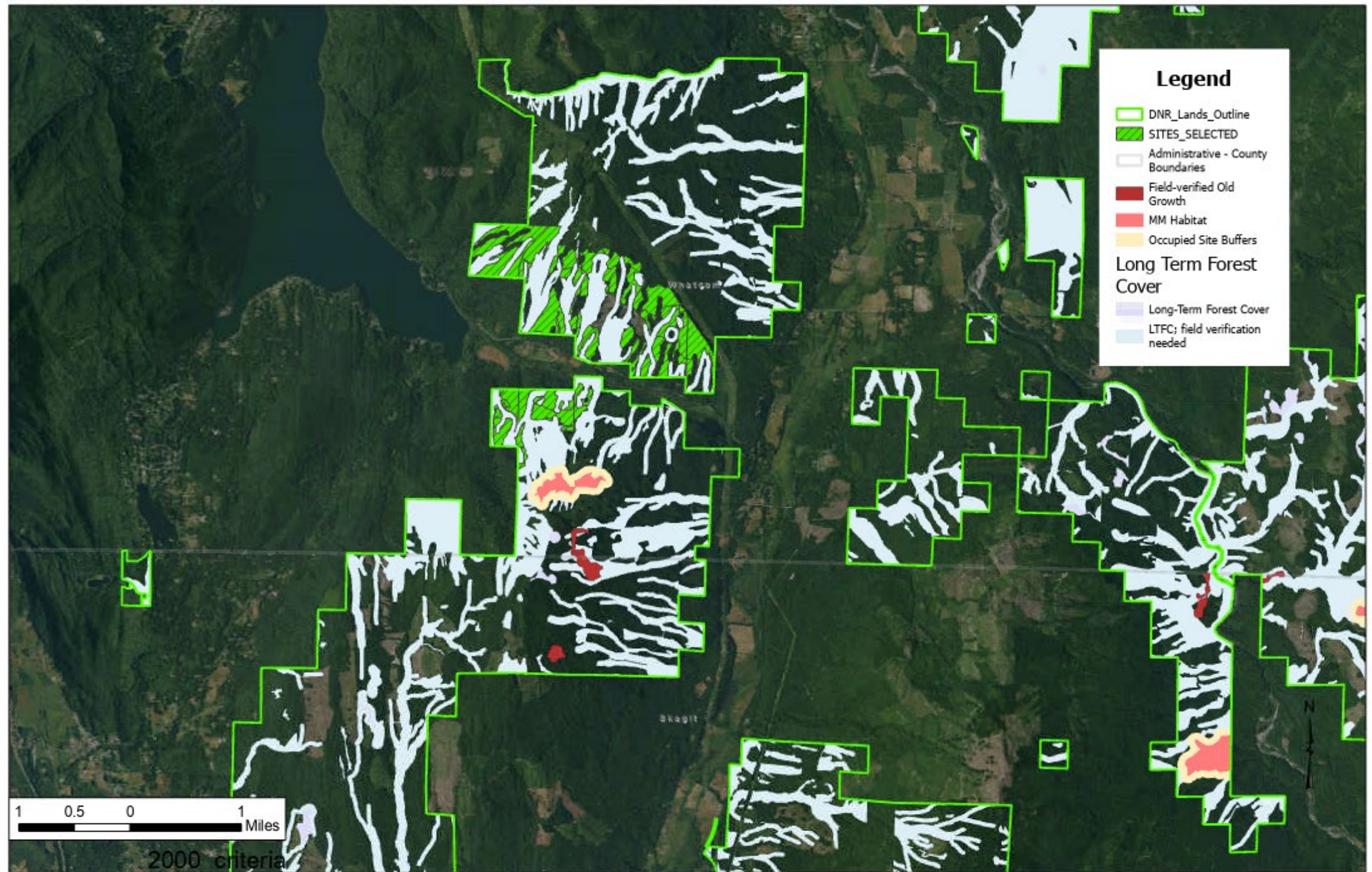
All data are draft and subject to change.



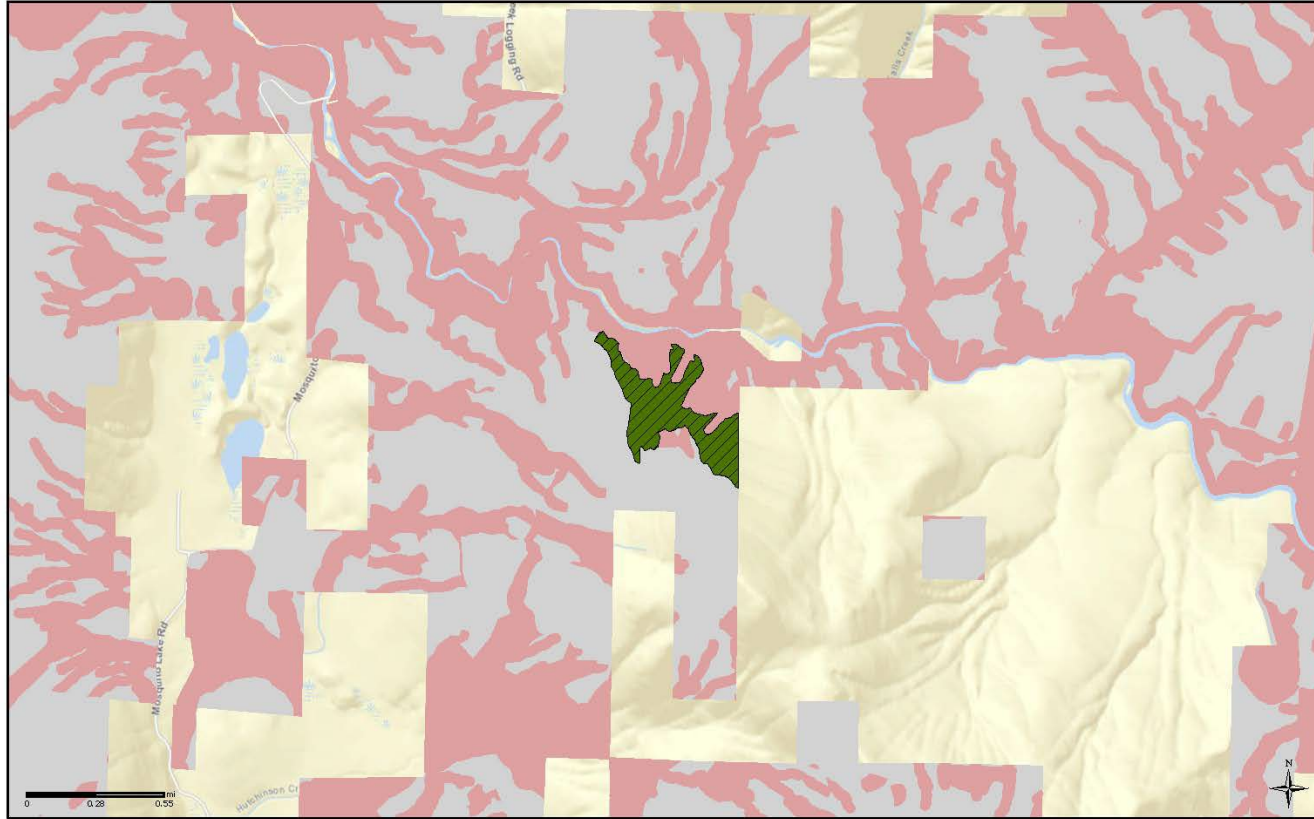
Co-benefits

Large contiguous block of structurally complex forest within Lake Whatcom Watershed and adjacent to habitat

Allows for creation of a larger contiguous Natural Resource Conservation Area (NRCA)



Whatcom County



Potential 2000 Acres Sites
Brokedown Palace

- Proposed Sites
- Planned VRH/LUC (through FY26)
- VRH-deferred
- DNR-Managed Lands

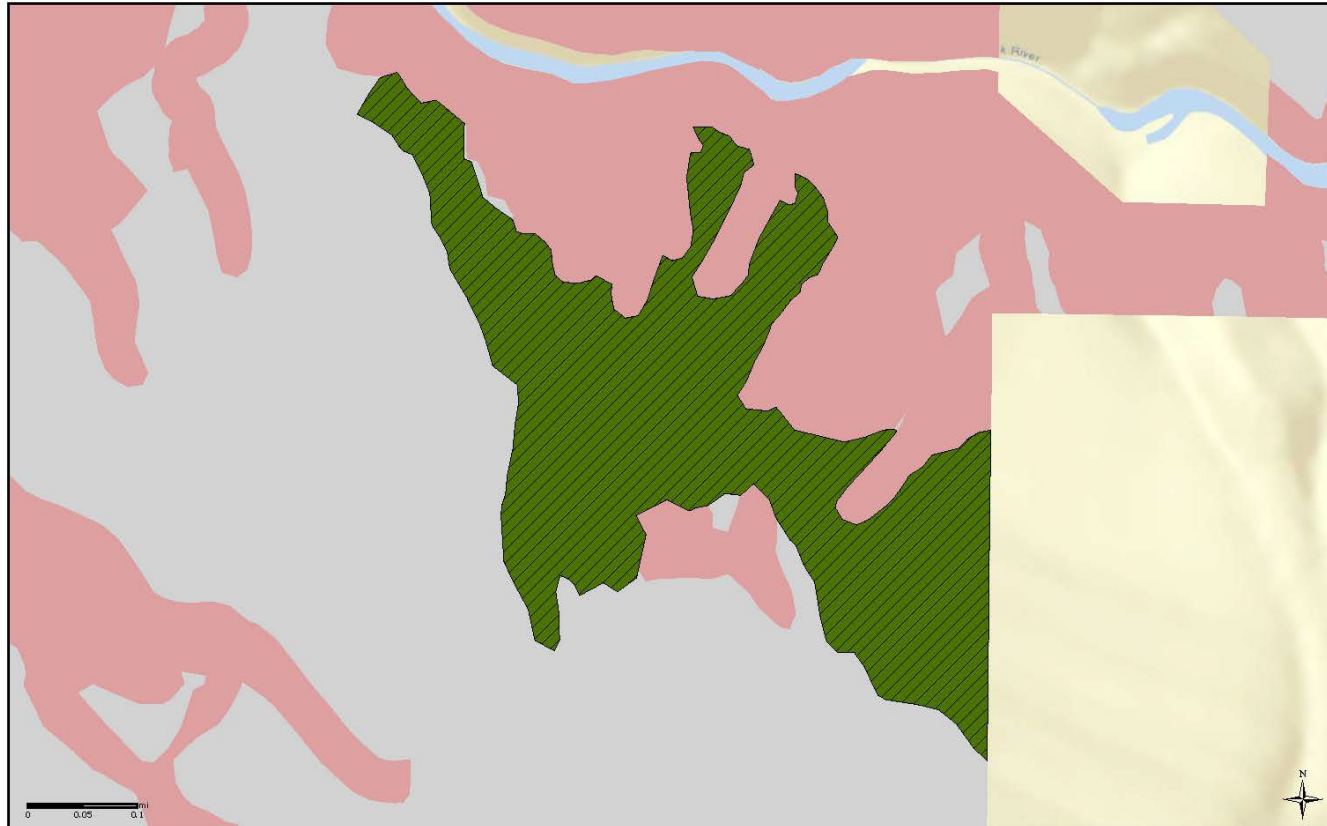
All data are draft and subject to change.



Brokedown Palace

Trusts	Acres
State Forest Transfer	42
Common School	33
Grand Total	75

Whatcom County



Co-benefits

Provides connectivity between larger blocks of conservation

Adjacent to field verified old growth

Increases buffer on Nooksack River

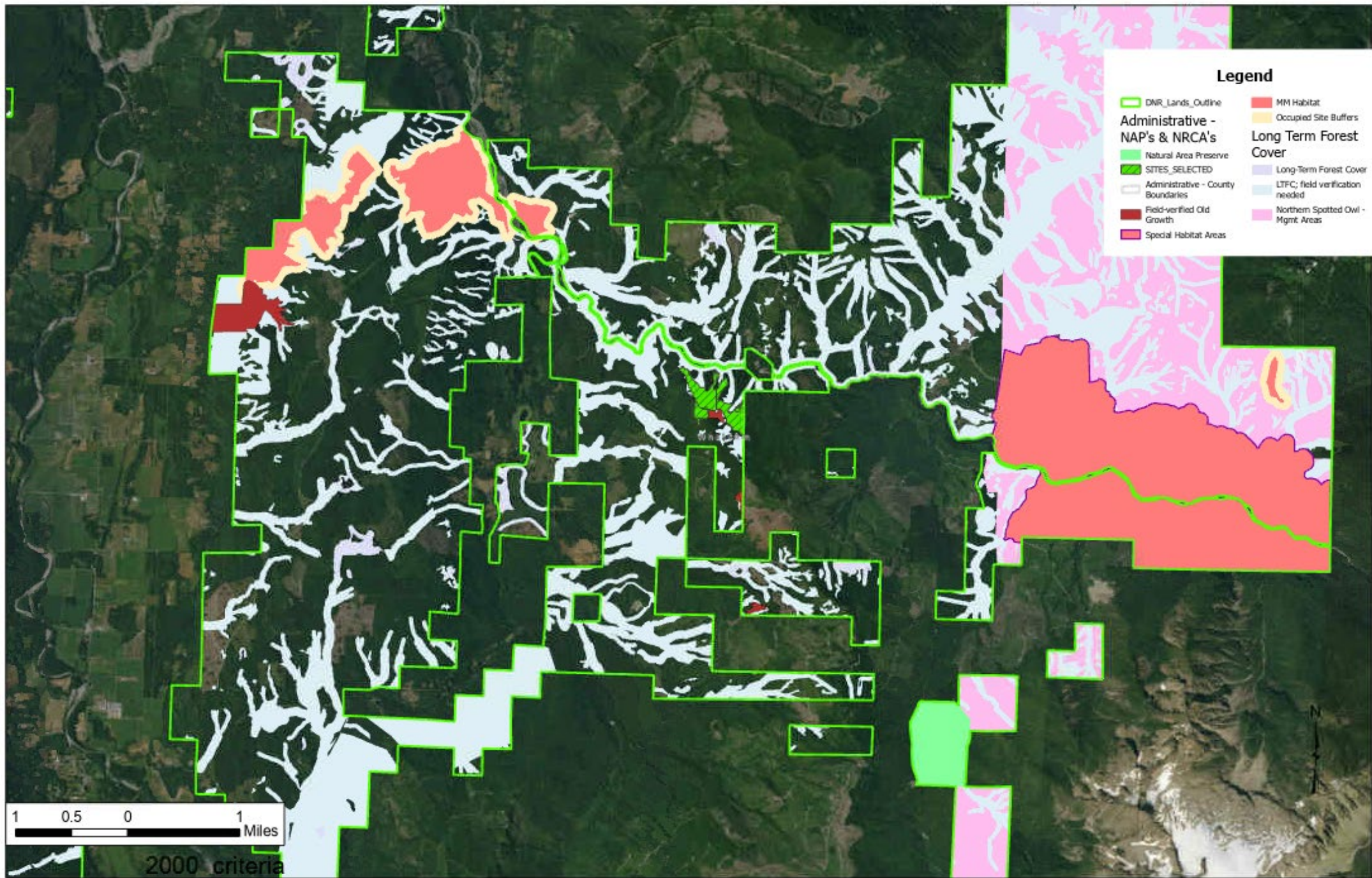


Potential 2000 Acres Sites
Brokedown Palace



All data are draft and subject to change.





1 0.5 0 1 Miles

2000 criteria

Next Steps

County Concurrence

Letters have been sent to each county with a request for concurrence by January 31st

Land Transfers

Land transfers will occur as lands are acquired for each trust.

Transfers must be appraised for full fair market value.

Acquisitions and transfers will each be presented to the board for approval



